

# WMO 7902297 - OWC Summary Plots

DMQC Operator: Lola Pierson  
 Date: 15-Jun-2026 15:30:00  
 Cycles: 0 - 44  
 Dfiles: -

Config File: cow\_config\_sm.txt  
 WMO Boxes: wmo\_boxes\_ctdargo.mat  
 Historical Argo: ARGO\_for\_DMQC\_2025V03\_1XXX.tar.gz  
 Historical CTD: CTD\_for\_DMQC\_2024V01\_1.tar.gz

## Map Scale

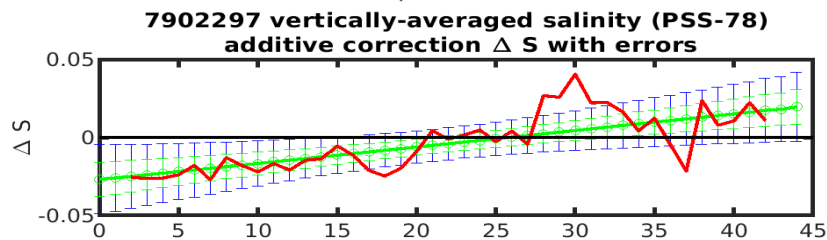
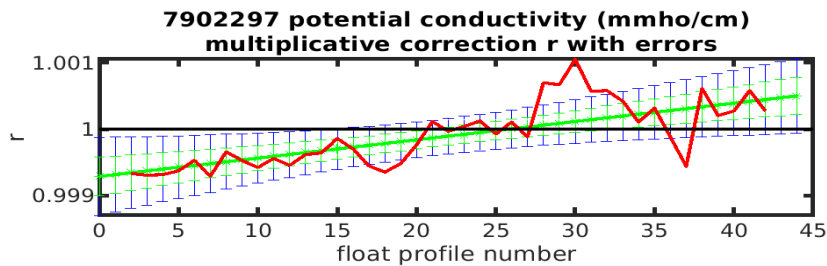
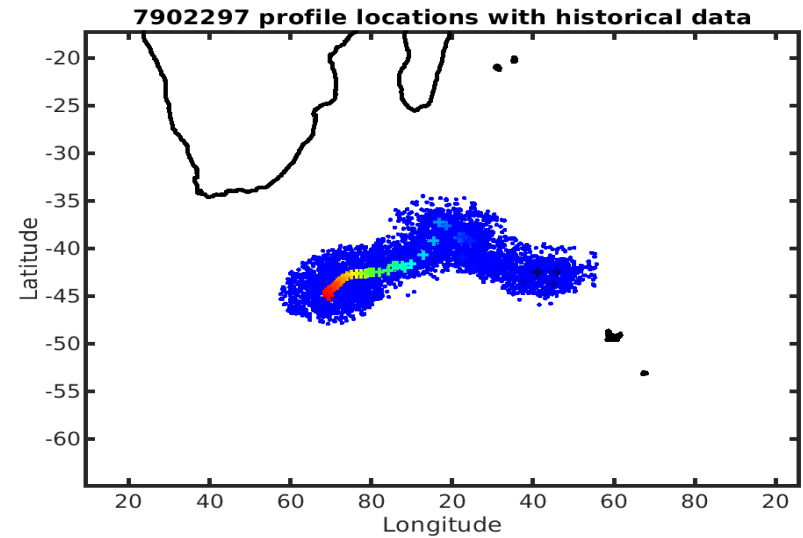
Longitude: 1° / 2°  
 Latitude: 0.5° / 1°  
 Age: 5yrs / 10yrs  
 PV: 0  
 SAF: 0

## OWC Parameters

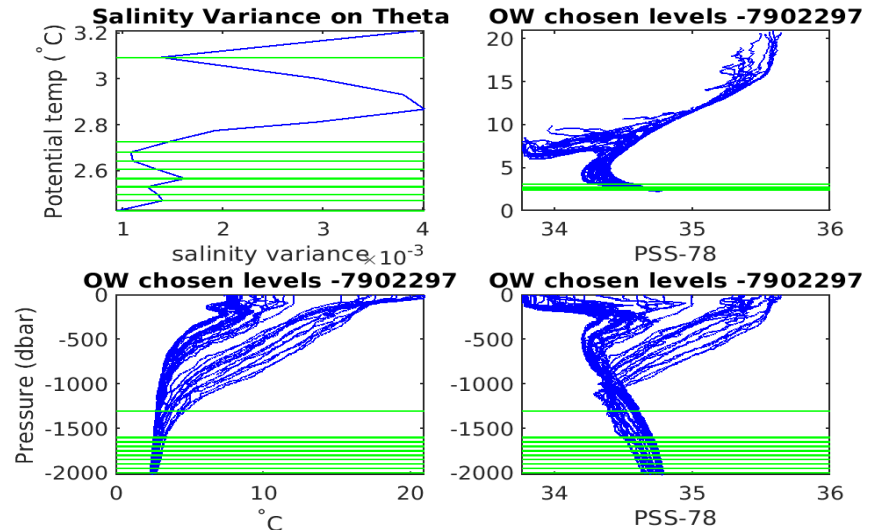
Pressure: : 1000 < pres < --  
 Theta: -- < theta < --  
 Breaks: --

## Output

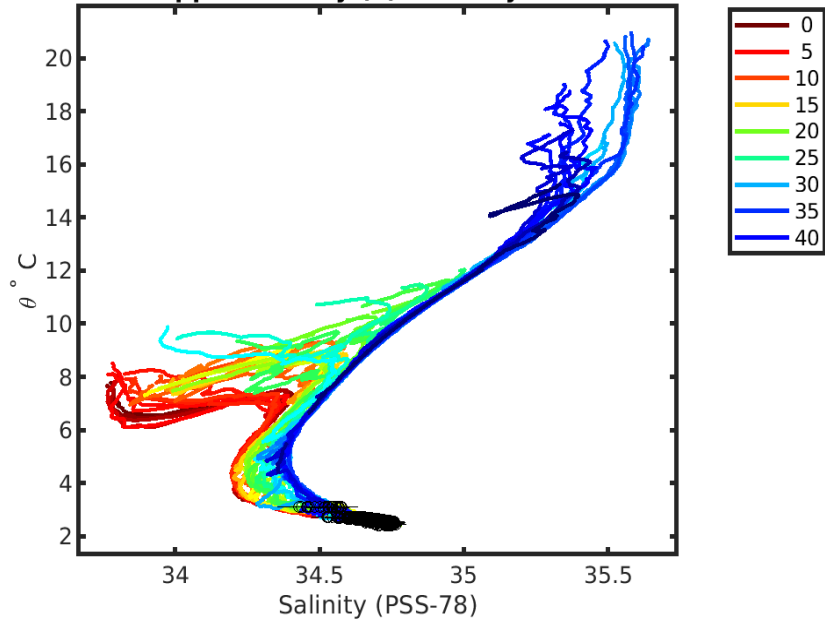
Pcond factor: [0.99929 - 1.0005]  
 Salinity Offset: [-0.026792 - 0.019539]



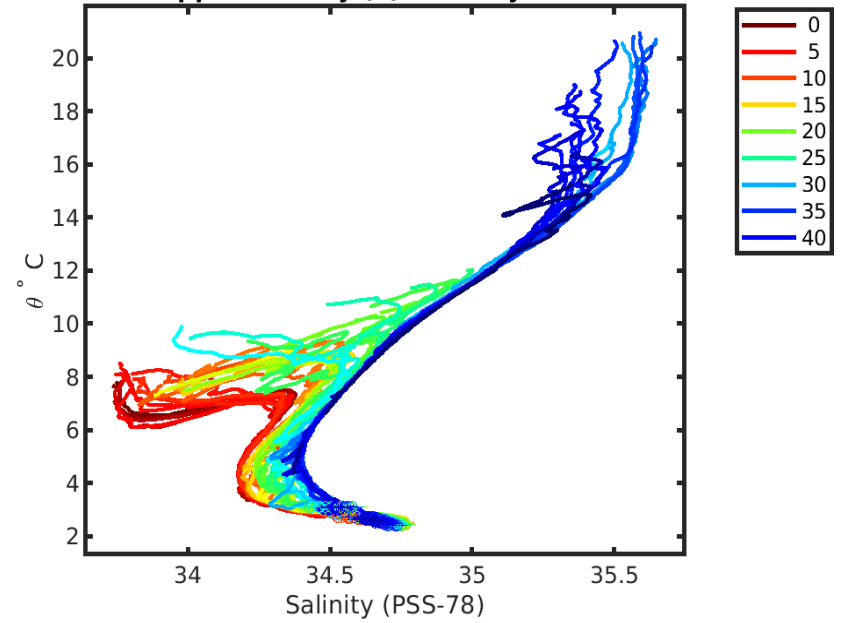
float profile number - blue: 2xcal error; green: 1xcal error; red: 1-1 profile f



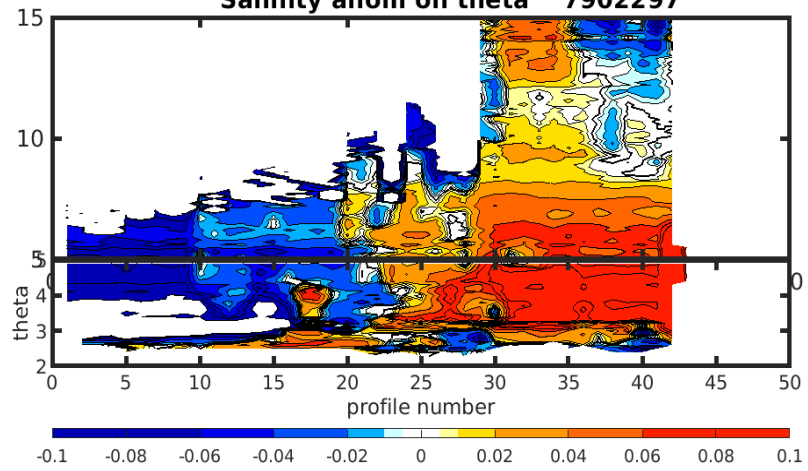
**7902297 uncalibrated float data (-)  
and mapped salinity (o) with objective errors**



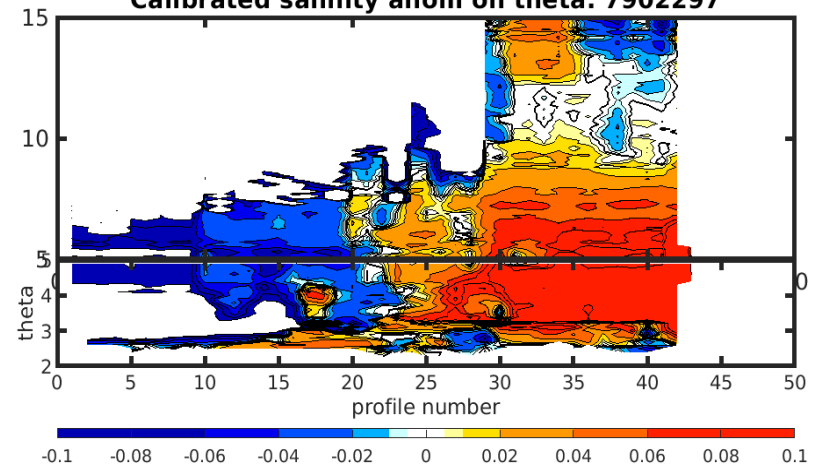
**7902297 calibrated float data (-)  
and mapped salinity (o) with objective errors**

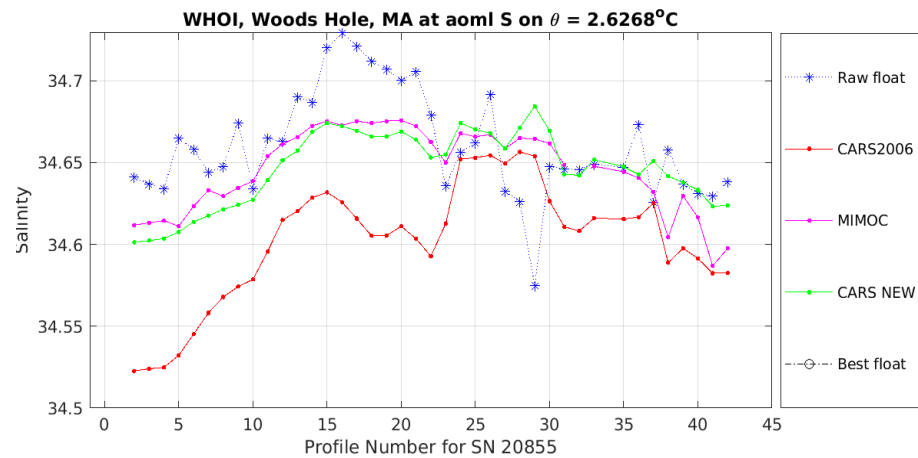
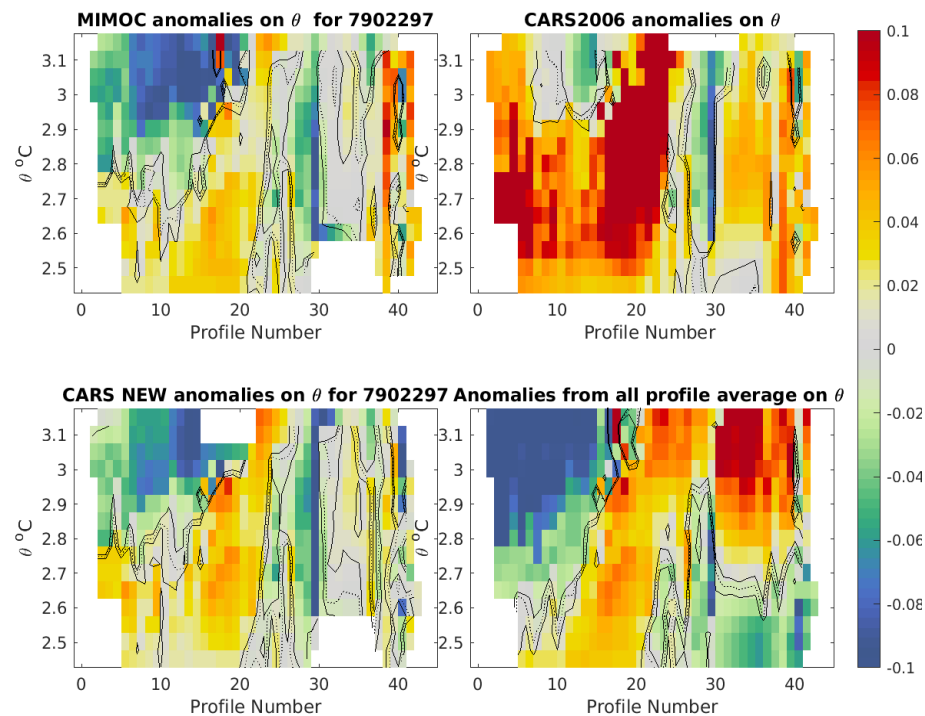
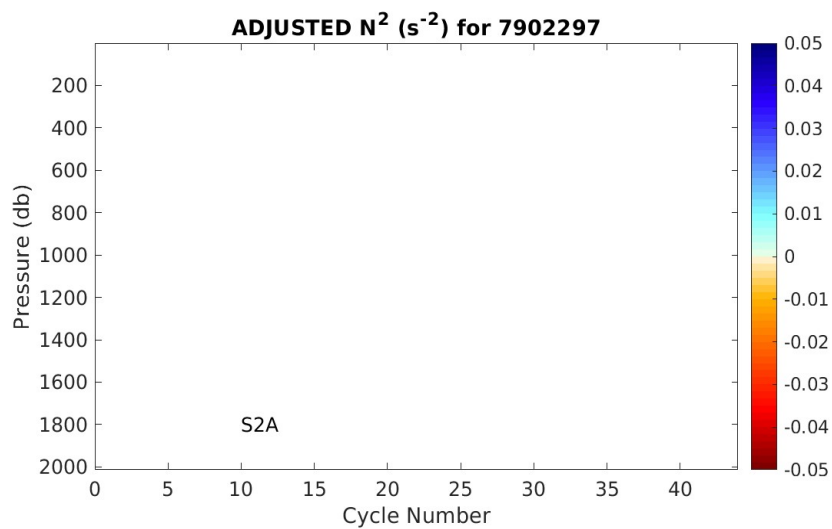
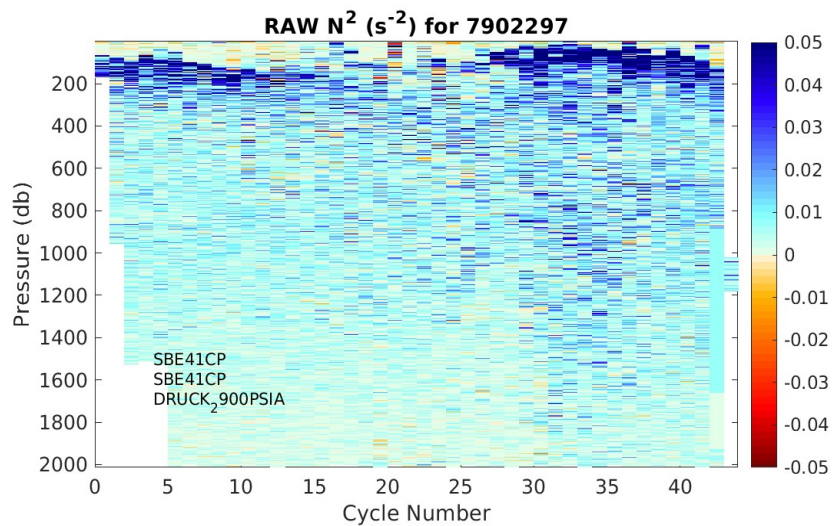


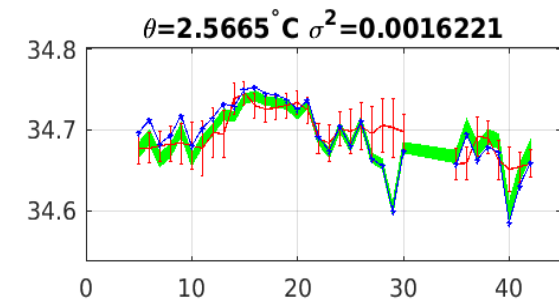
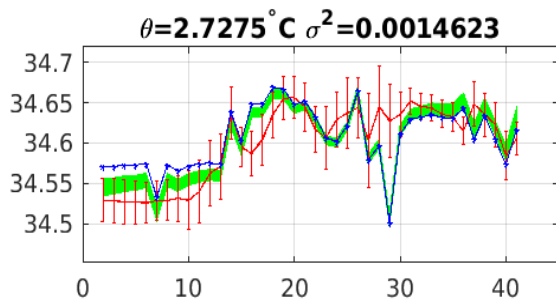
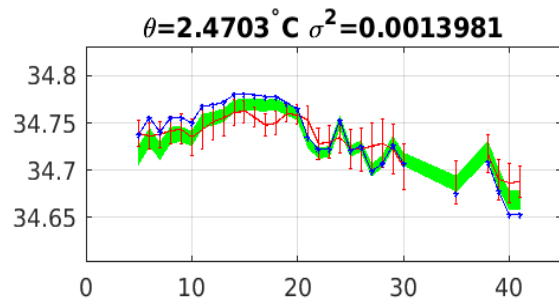
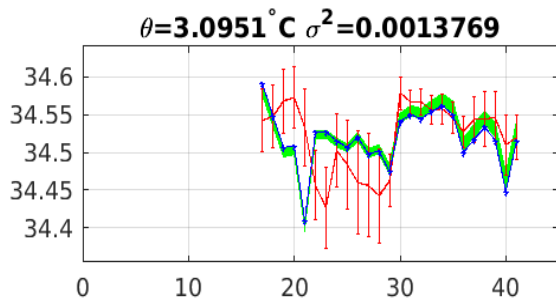
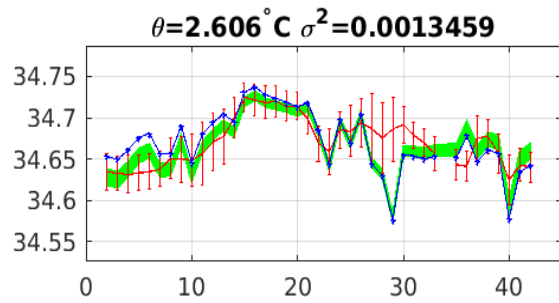
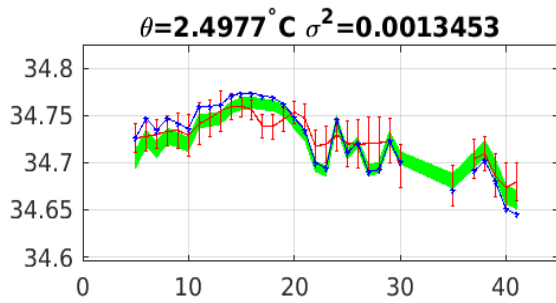
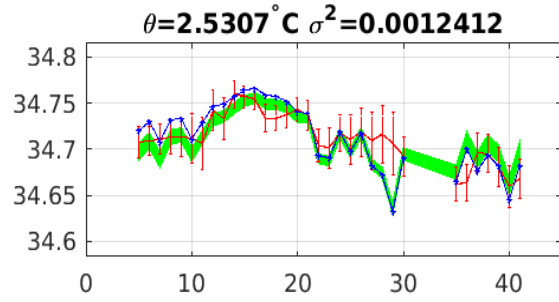
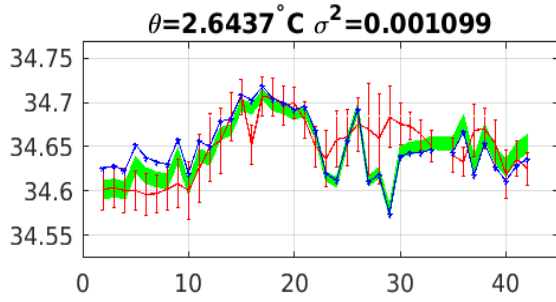
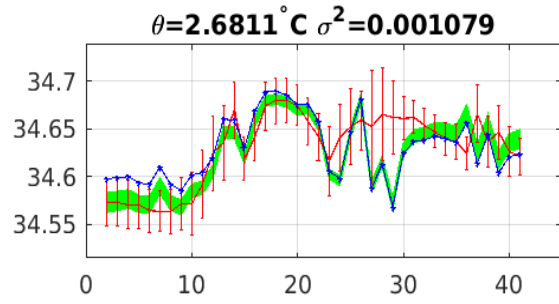
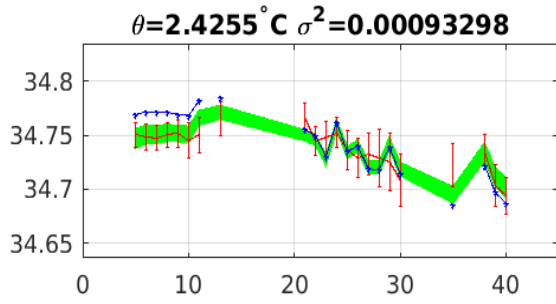
**Salinity anom on theta 7902297**



**Calibrated salinity anom on theta. 7902297**







Blue: uncal float; Red: mapped salinity; Green: cal float w/1xerr