

# WMO 6900312 - OWC Summary Plots

DMQC Operator: Sachiko Yoshida  
 Date: 30-Aug-2021 11:35:39  
 Config File: cow\_config\_sm.txt

WMO Boxes: wmo\_boxes\_ctd21argo20.mat  
 Historical Argo: ARGO\_for\_DMQC\_2020V03.tar.gz  
 Historical CTD: CTD\_for\_DMQC\_2021V01\_1.tar.gz

## Map Scale

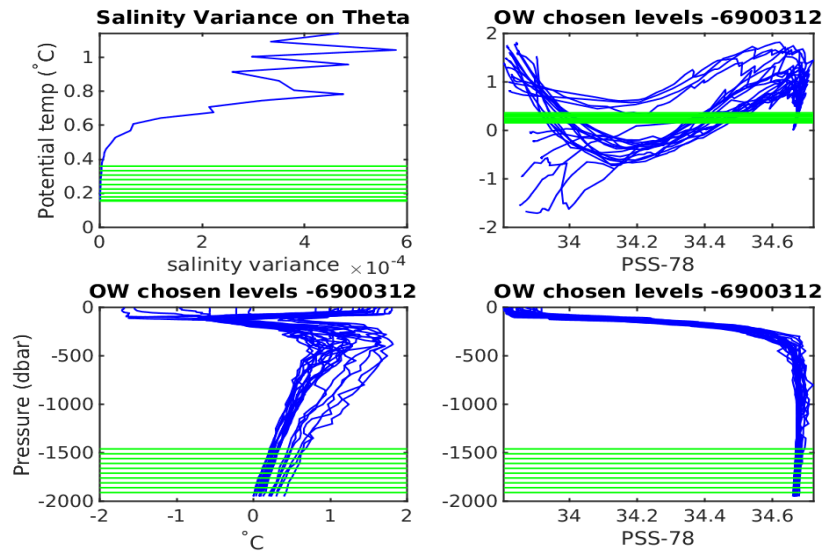
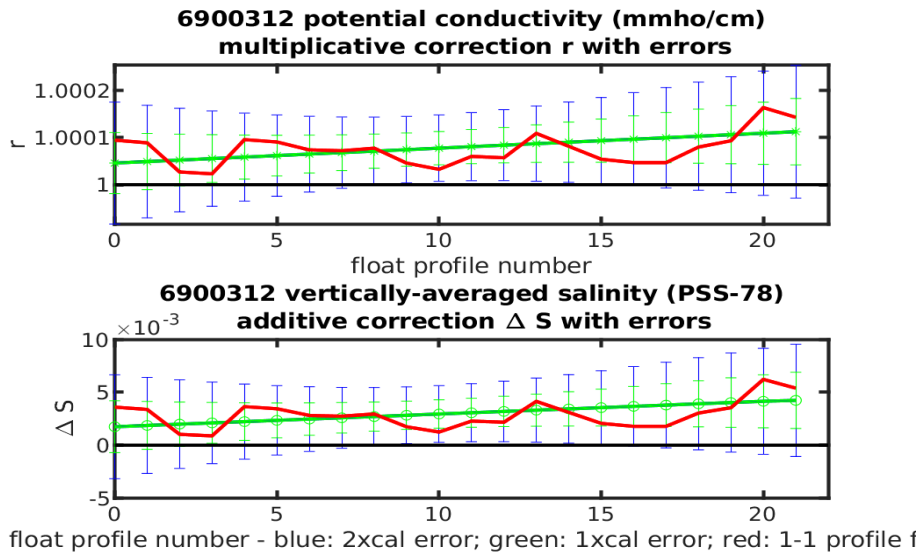
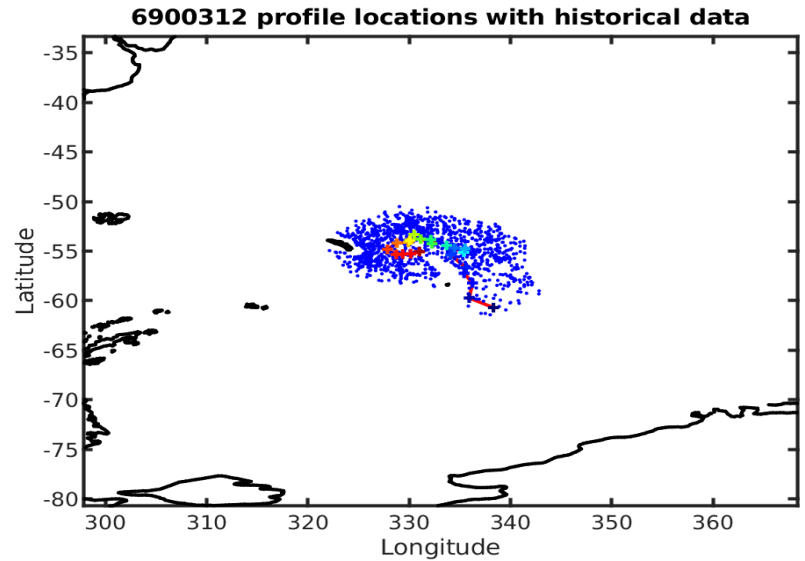
Longitude: 1° / 2°  
 Latitude: 0.5° / 1°  
 Age: 5yrs / 10yrs  
 PV: 0  
 SAF: 0

## OWC Parameters

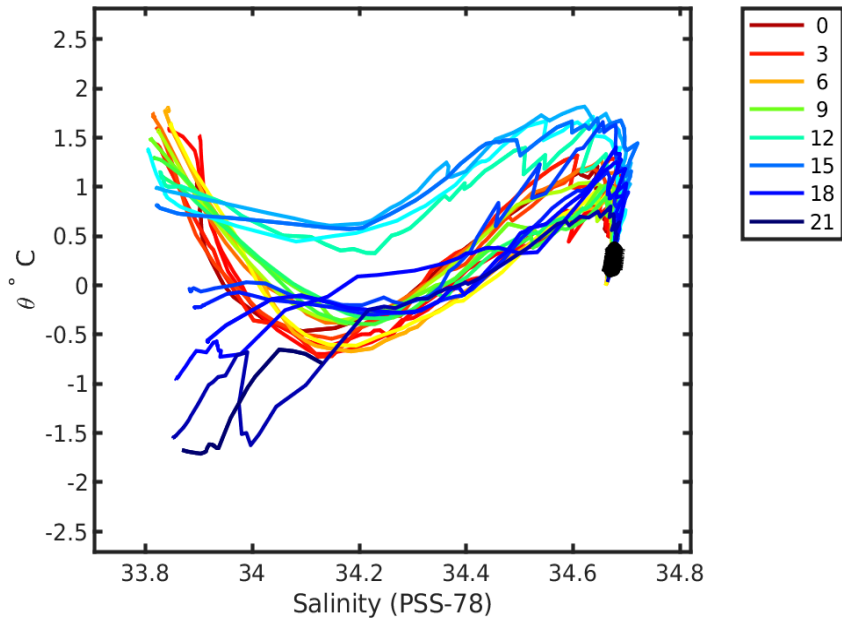
Pressure: : -- < pres < --  
 Theta: -- < theta < --  
 Breaks: --

## Output

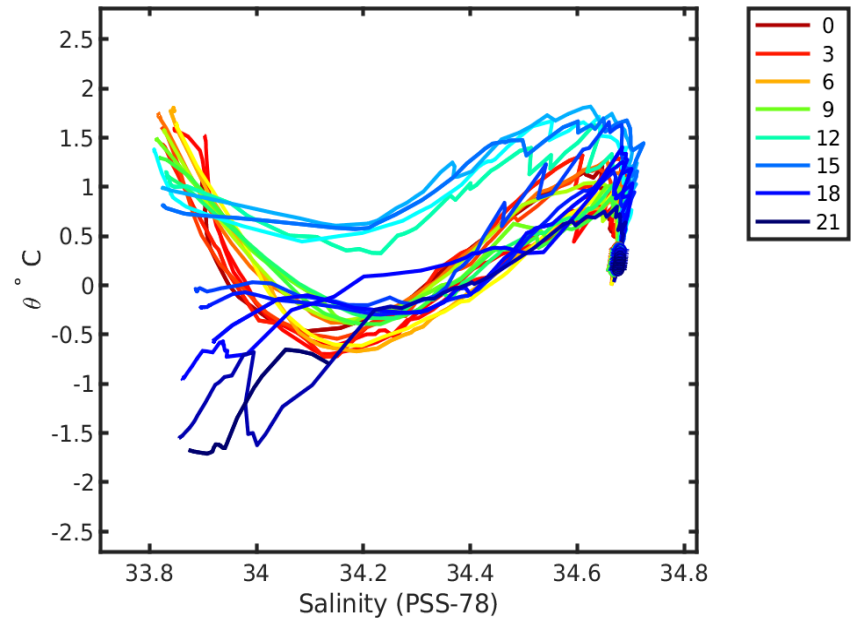
Pcond factor: [1 - 1.0001]  
 Salinity Offset: [0.0017452 - 0.004236]



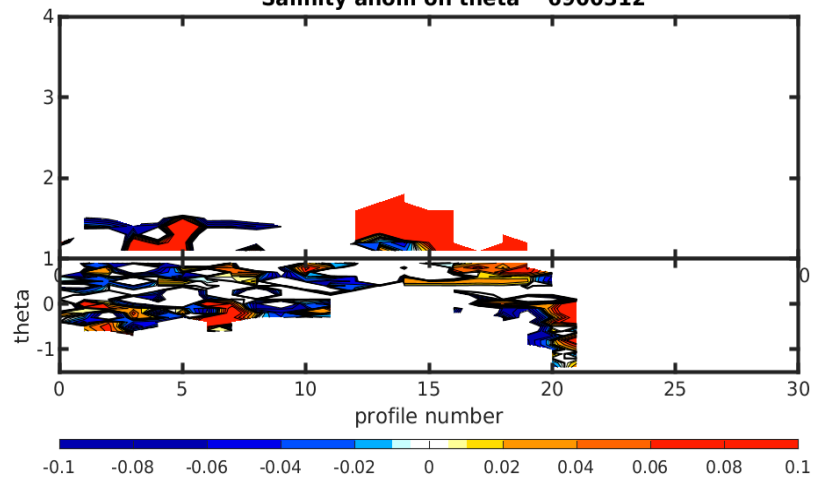
**6900312 uncalibrated float data (-)  
and mapped salinity (o) with objective errors**



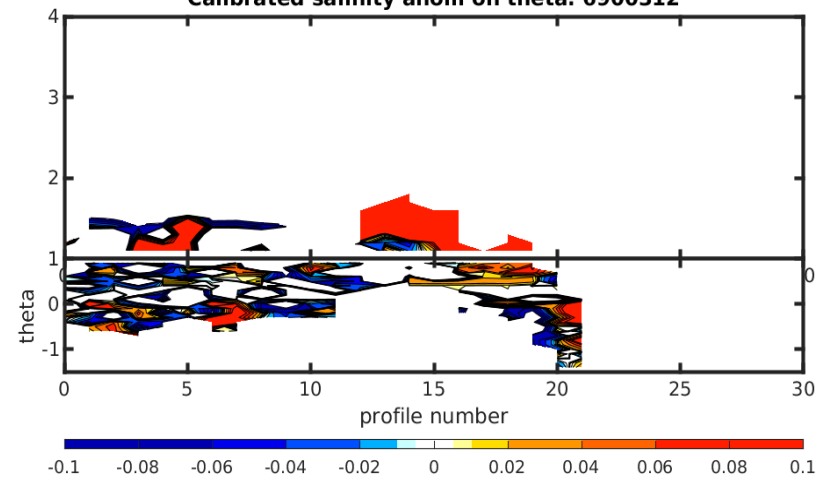
**6900312 calibrated float data (-)  
and mapped salinity (o) with objective errors**

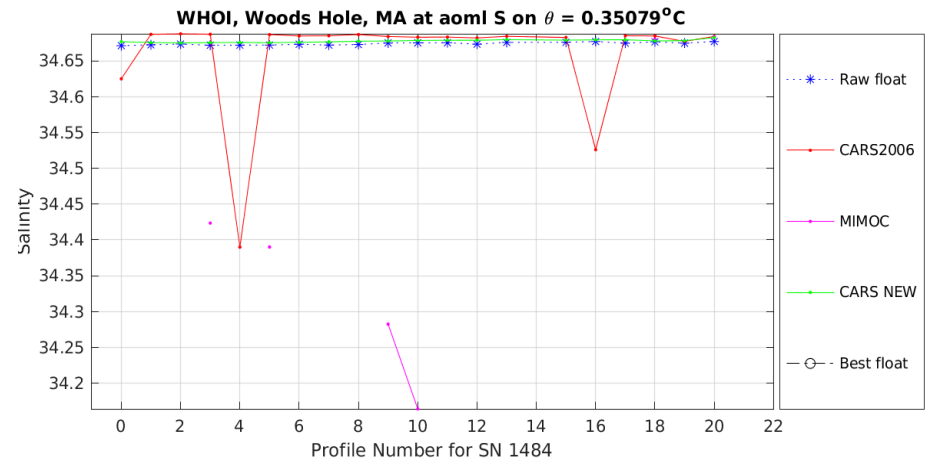
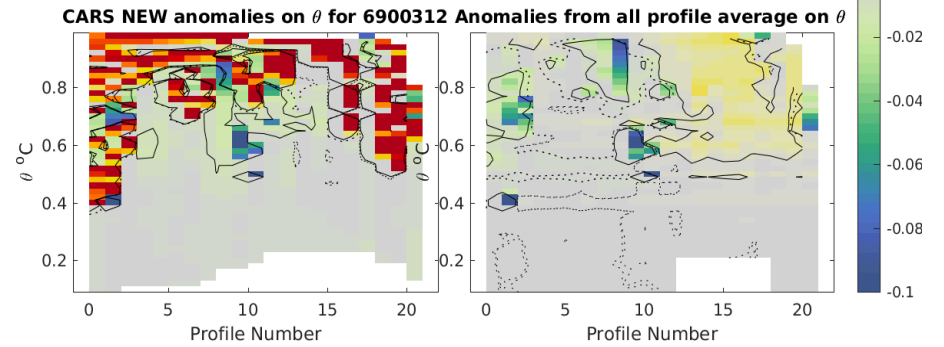
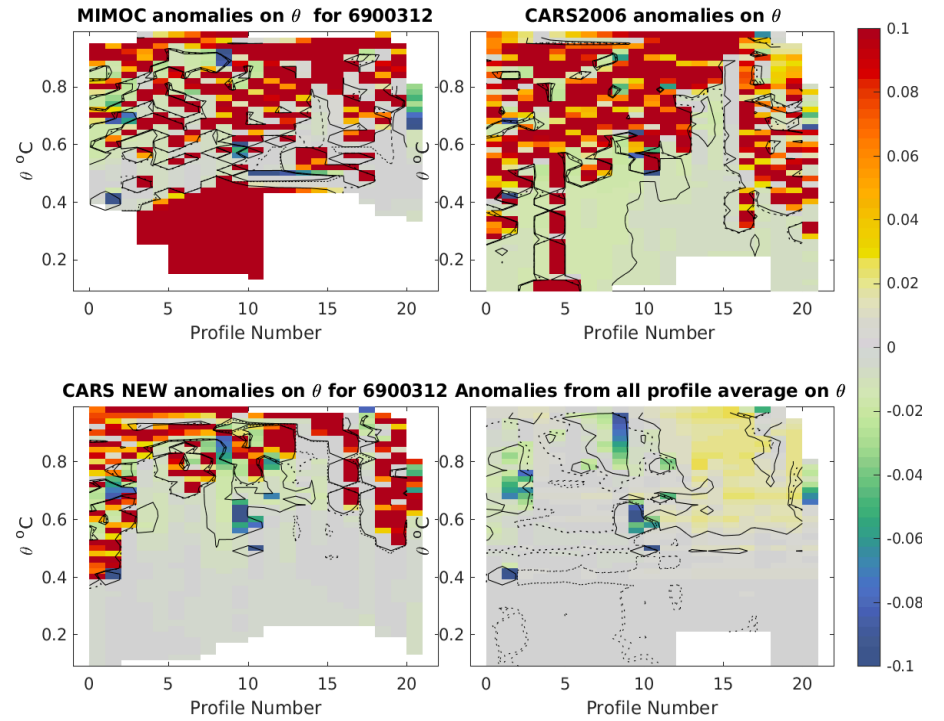
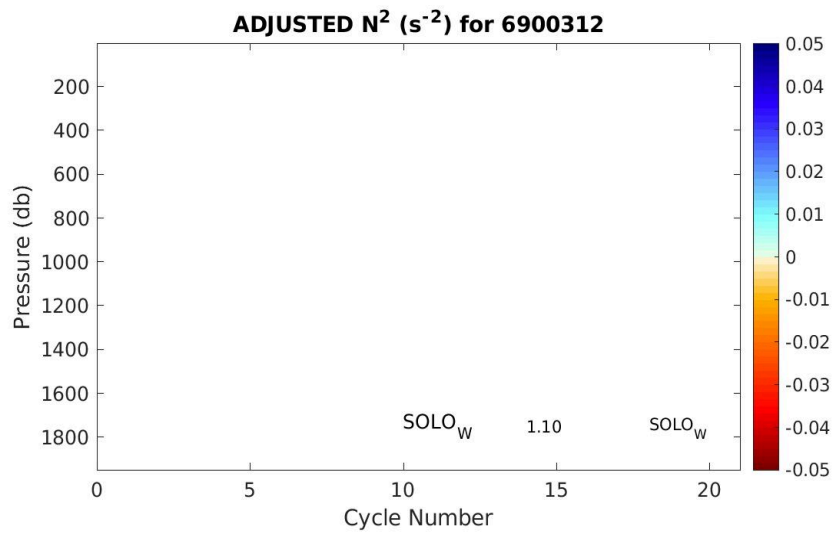
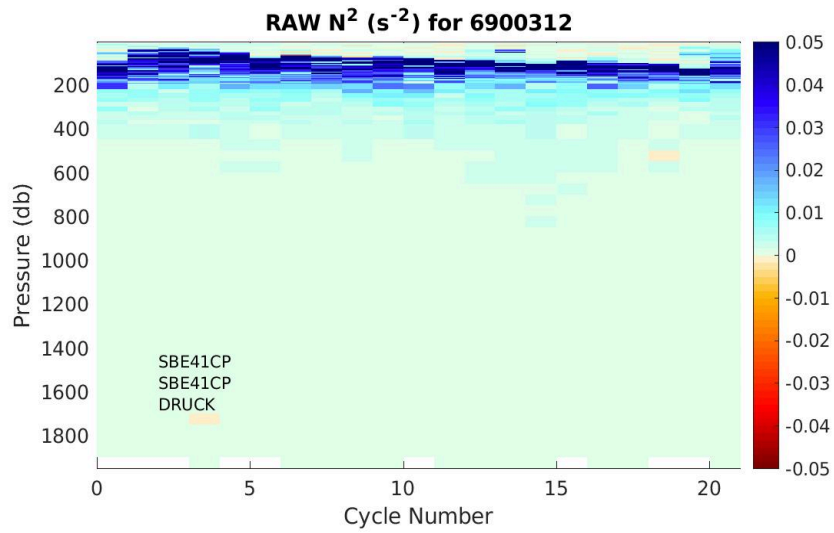


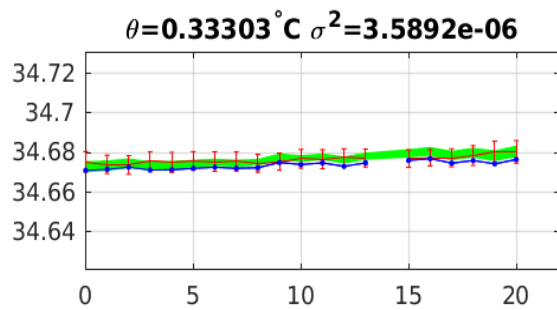
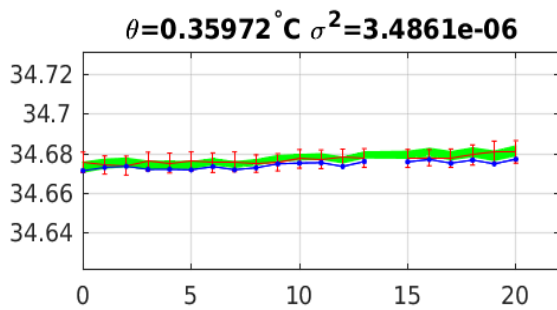
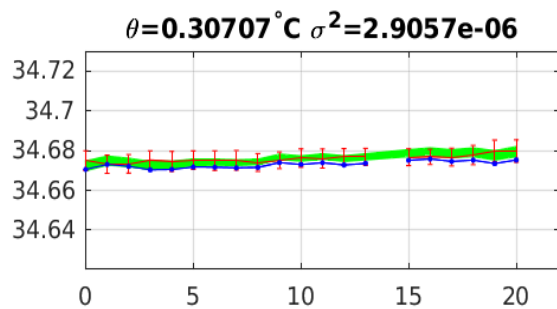
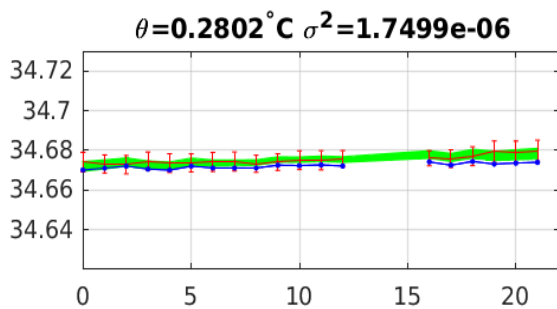
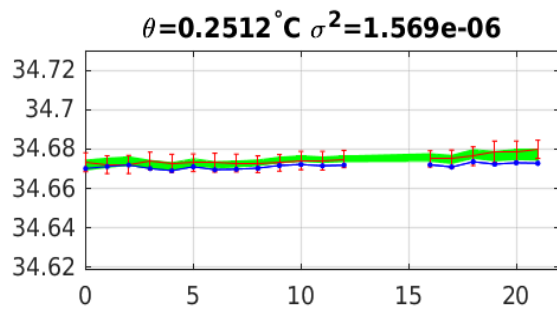
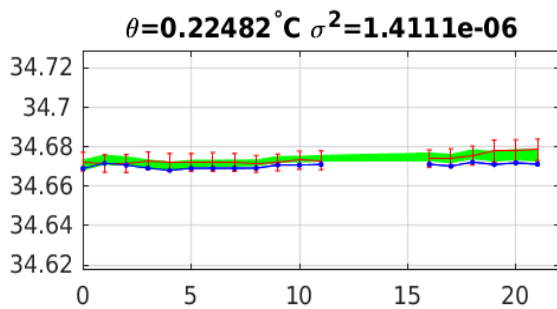
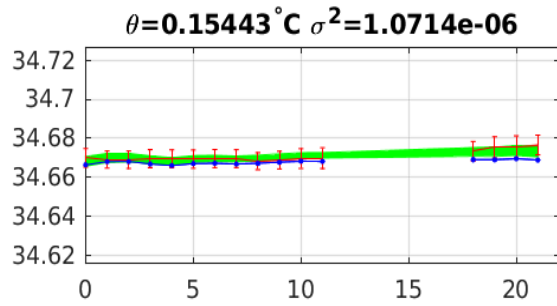
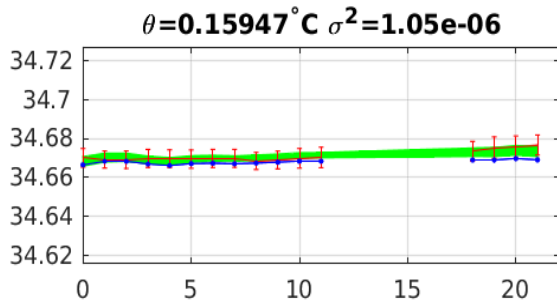
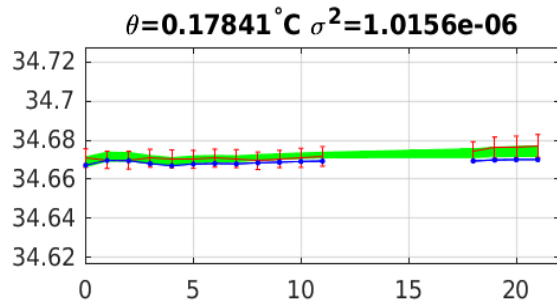
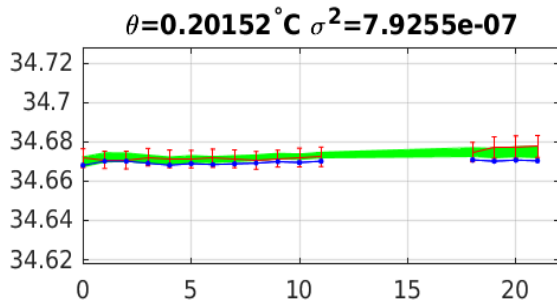
**Salinity anom on theta 6900312**



**Calibrated salinity anom on theta. 6900312**







Blue: uncal float; Red: mapped salinity; Green: cal float w/1xerr