

# WMO 4903800 - OWC Summary Plots

DMQC Operator: Lola Pierson  
 Date: 18-May-2026 14:51:50  
 Cycles: 0 - 48  
 Dfiles: -

Config File: cow\_config\_sm.txt  
 WMO Boxes: wmo\_boxes\_ctdargo.mat  
 Historical Argo: ARGO\_for\_DMQC\_2025V03\_1XXX.tar.gz  
 Historical CTD: CTD\_for\_DMQC\_2024V01\_1.tar.gz

## Map Scale

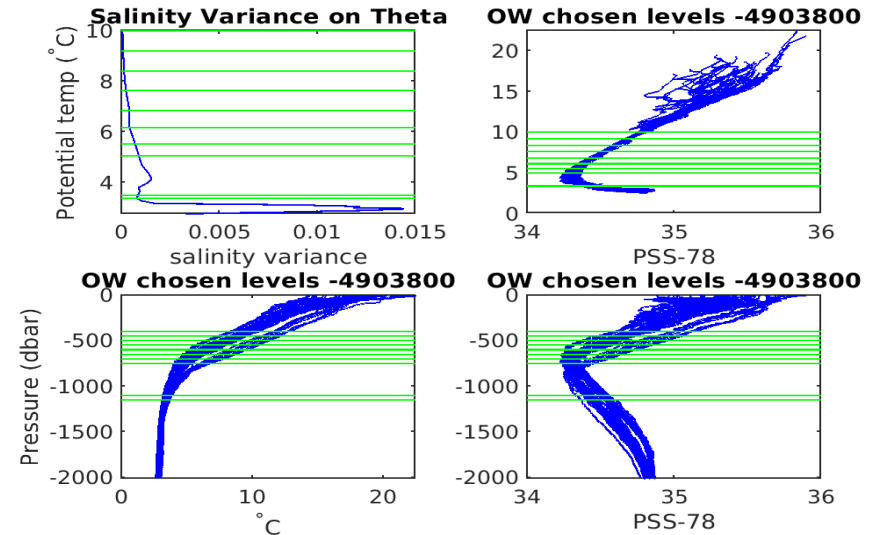
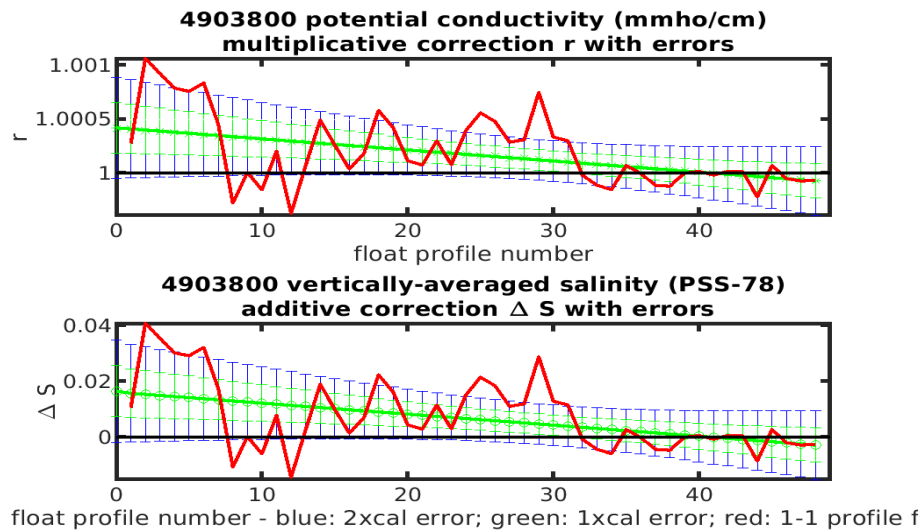
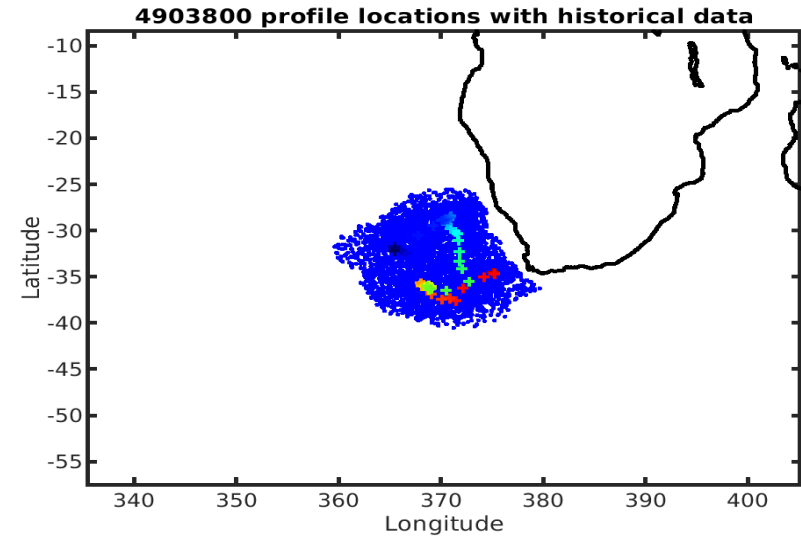
Longitude: 1° / 2°  
 Latitude: 0.5° / 1°  
 Age: 5yrs / 10yrs  
 PV: 0  
 SAF: 0

## OWC Parameters

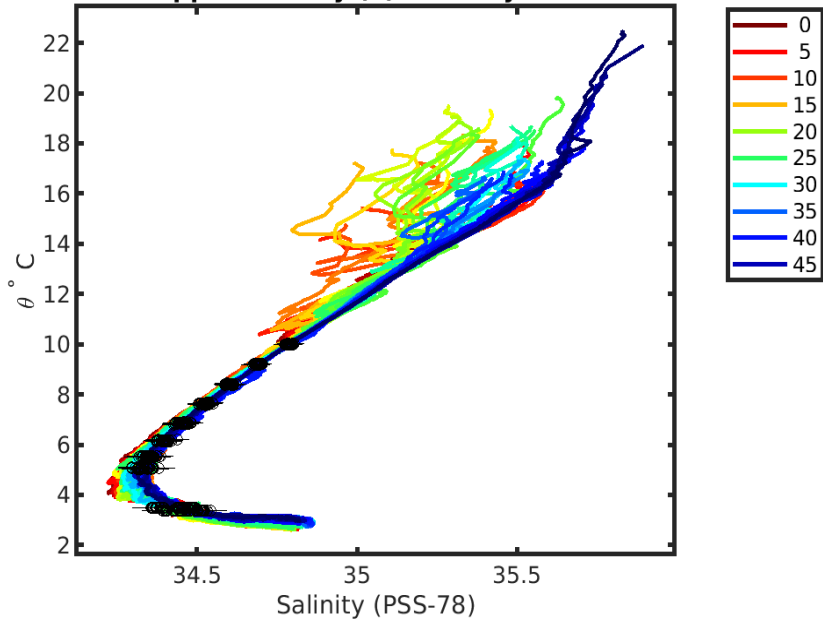
Pressure: : -- < pres < --  
 Theta: -- < theta < --  
 Breaks: --

## Output

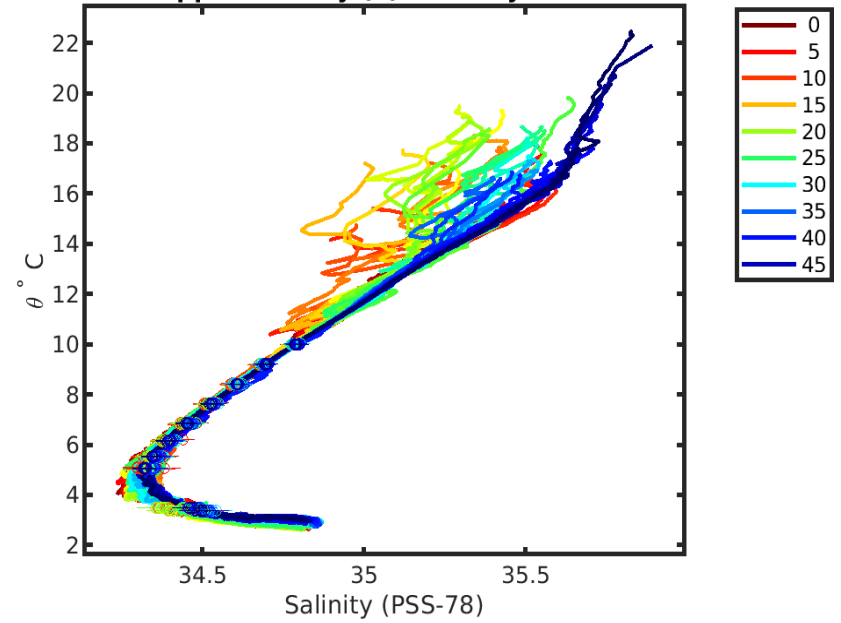
Pcond factor: [0.99992 - 1.0004]  
 Salinity Offset: [-0.0029013 - 0.016369]



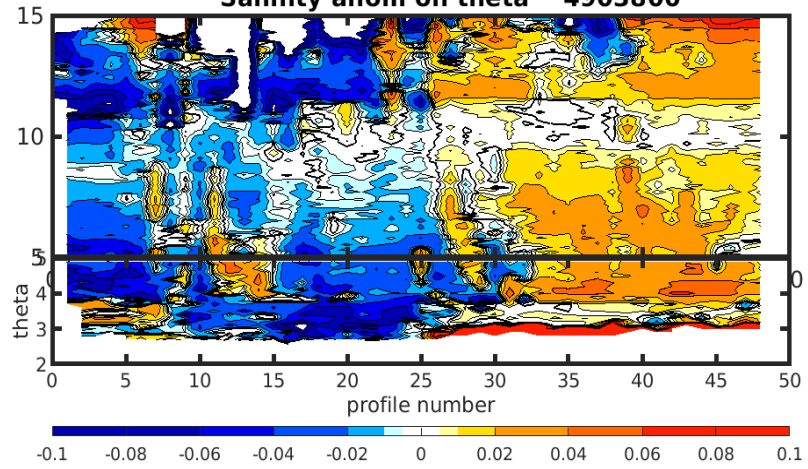
**4903800 uncalibrated float data (-)  
and mapped salinity (o) with objective errors**



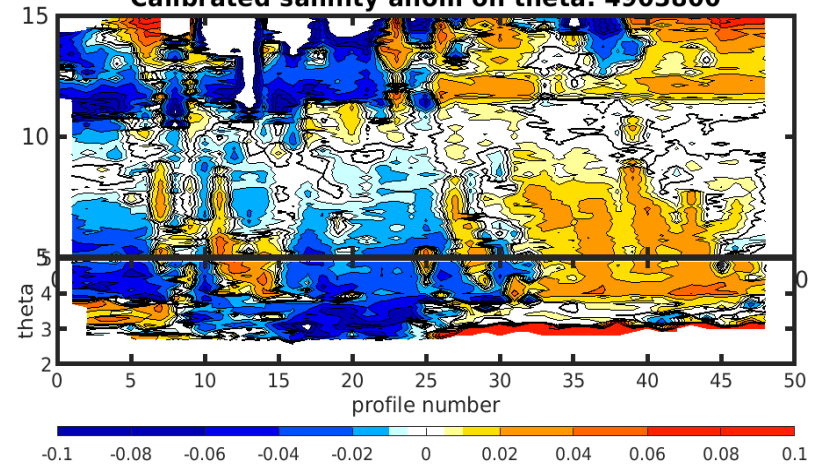
**4903800 calibrated float data (-)  
and mapped salinity (o) with objective errors**

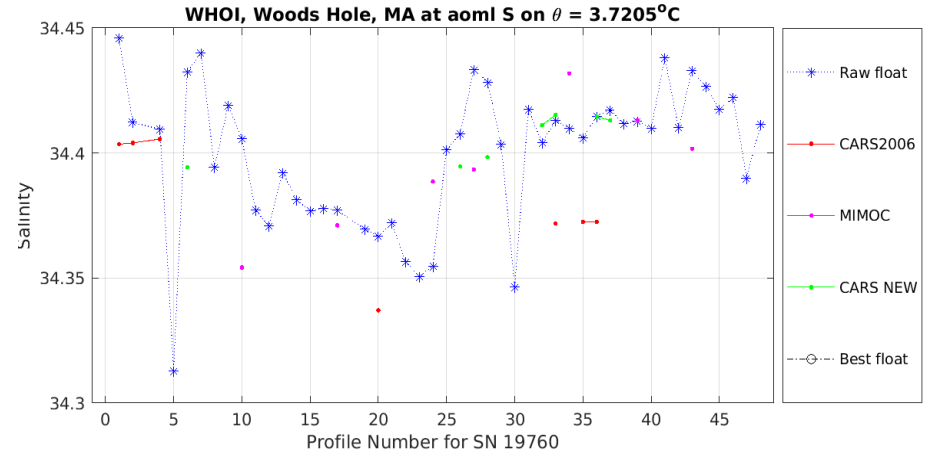
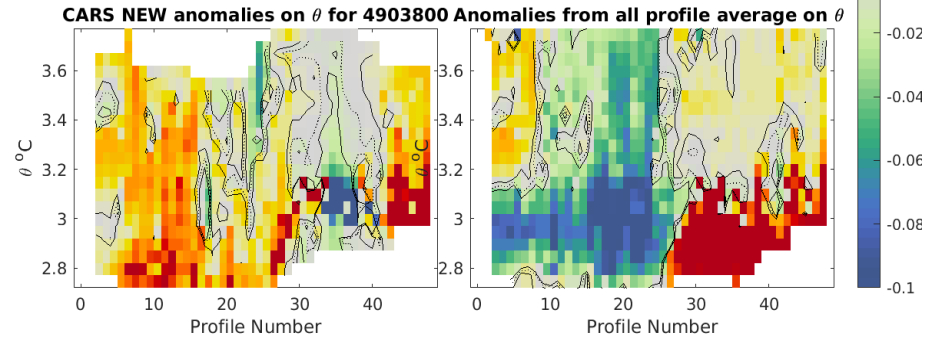
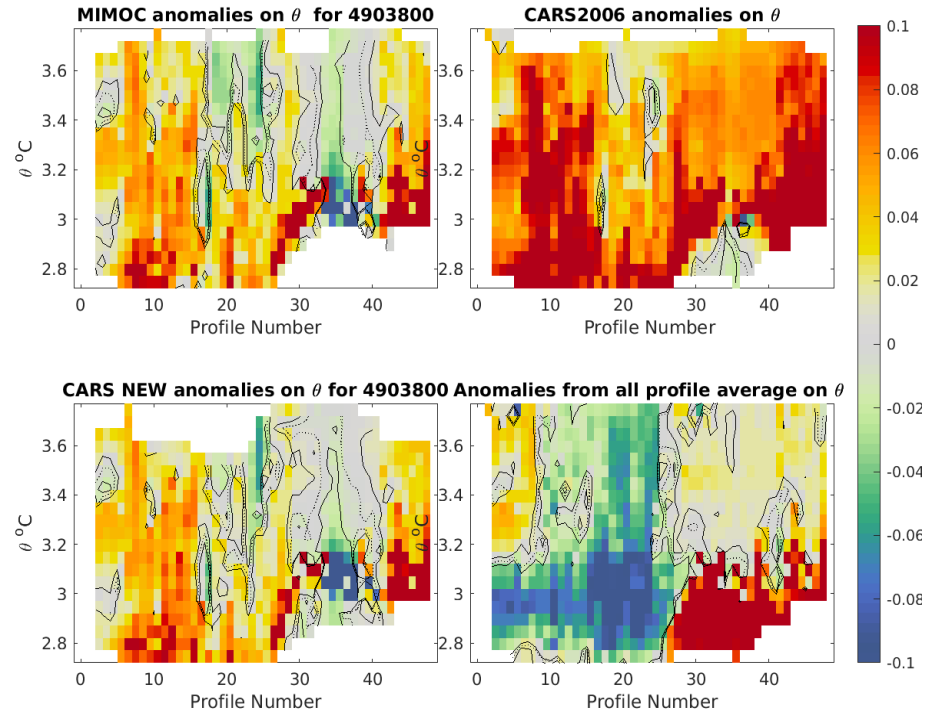
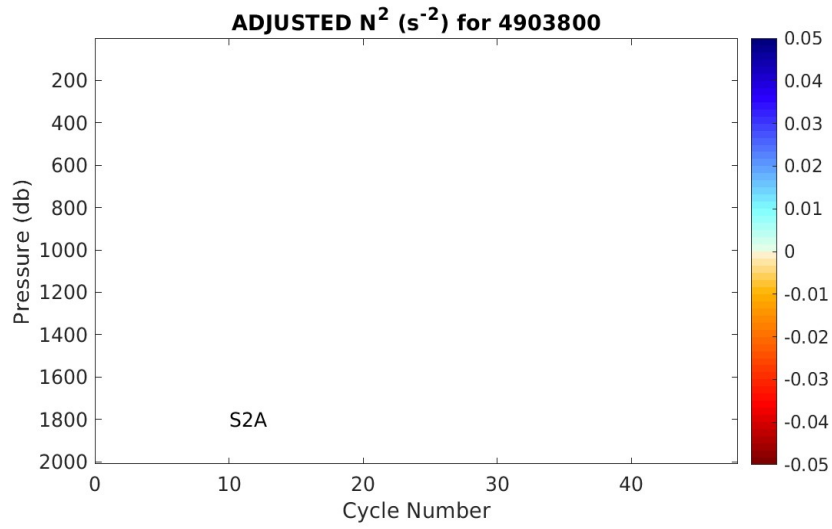
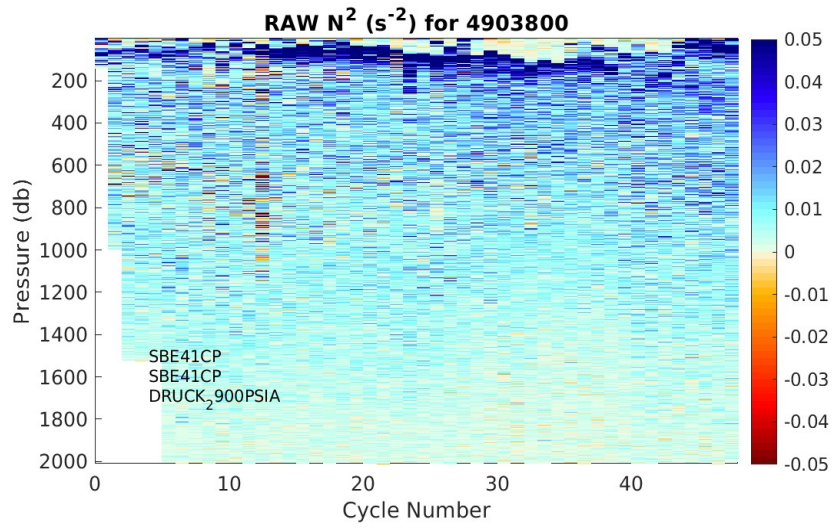


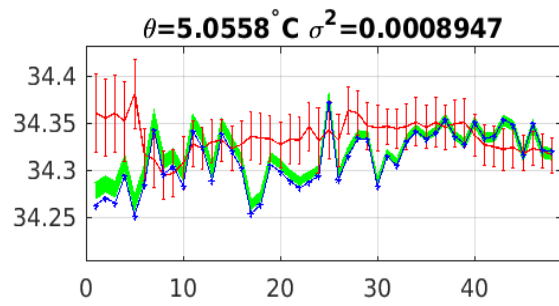
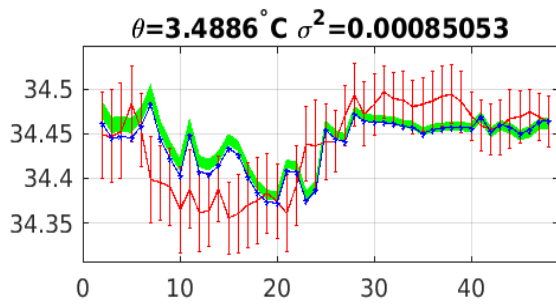
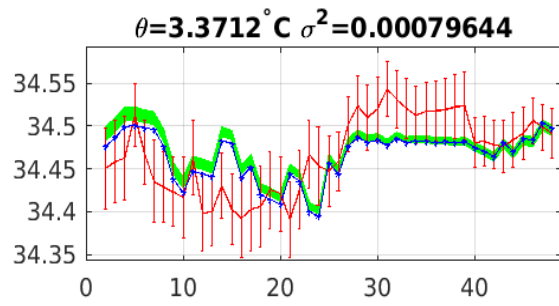
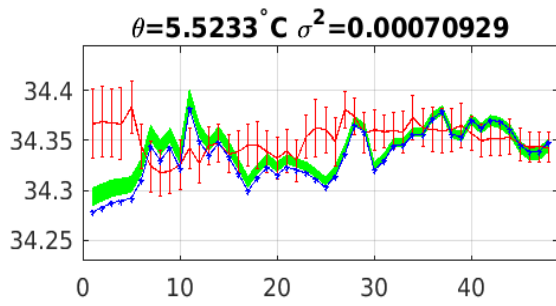
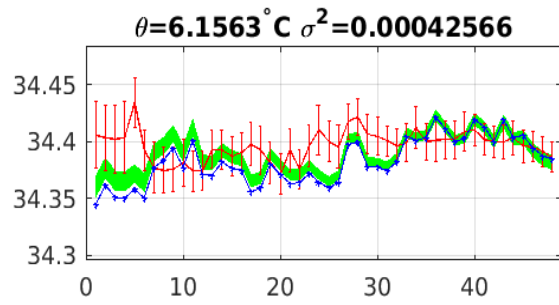
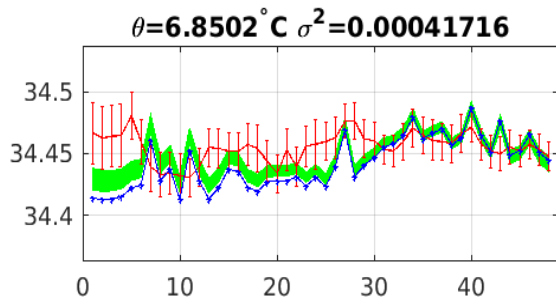
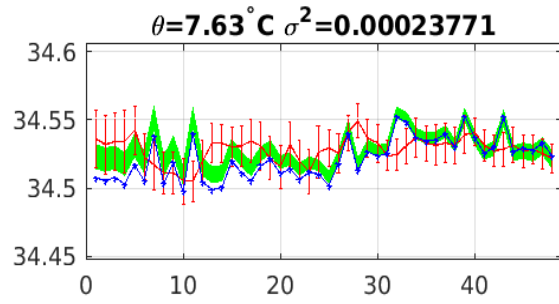
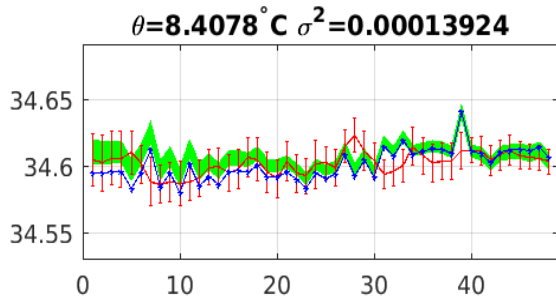
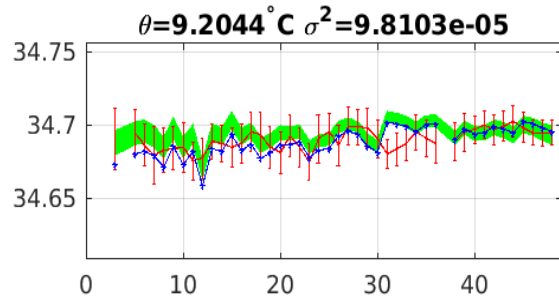
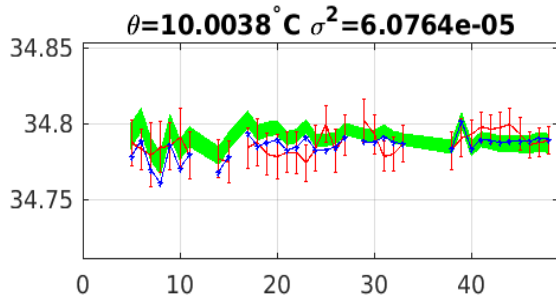
**Salinity anom on theta 4903800**



**Calibrated salinity anom on theta. 4903800**







Blue: uncal float; Red: mapped salinity; Green: cal float w/1xerr