

# WMO 4903540 - OWC Summary Plots

DMQC Operator: Deb West-Mack  
 Date: 01-Oct-2024 15:19:33  
 Cycles: 0 - 54  
 Dfiles: -

Config File: cow\_config\_sm.txt  
 WMO Boxes: wmo\_boxes\_ctd21argo22.mat  
 Historical Argo: ARGO\_for\_DMQC\_2020V03.tar.gz  
 Historical CTD: CTD\_for\_DMQC\_2024V01\_1.tar.gz

## Map Scale

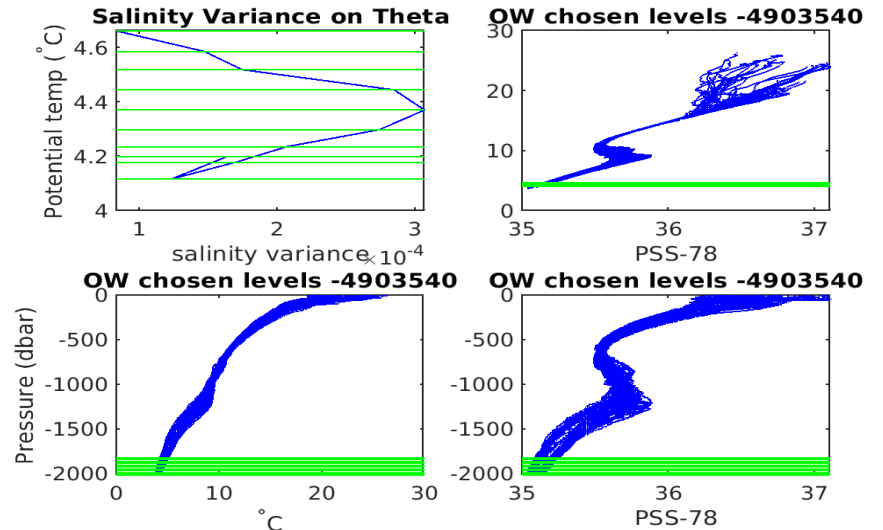
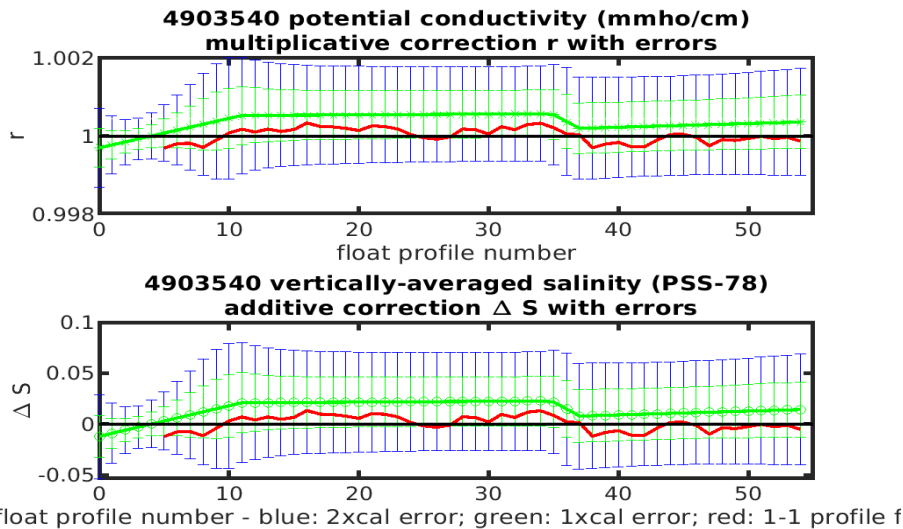
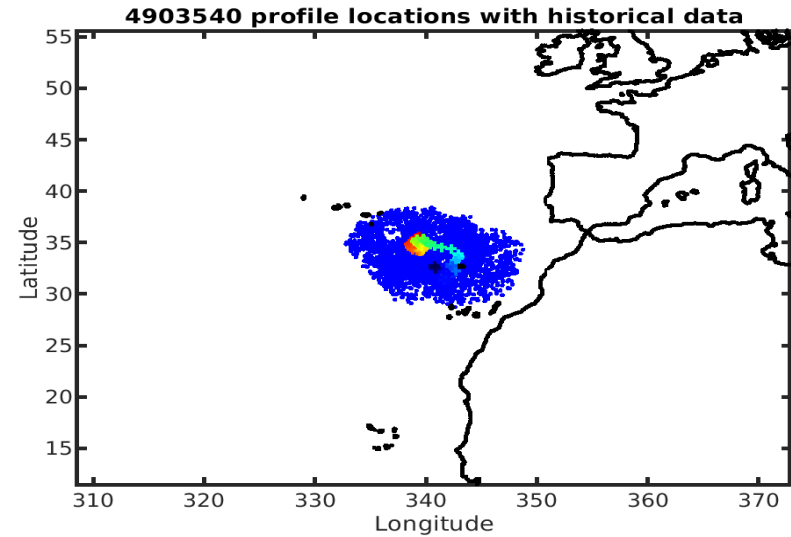
Longitude: 1° / 2°  
 Latitude: 0.5° / 1°  
 Age: 5yrs / 10yrs  
 PV: 0  
 SAF: 0

## OWC Parameters

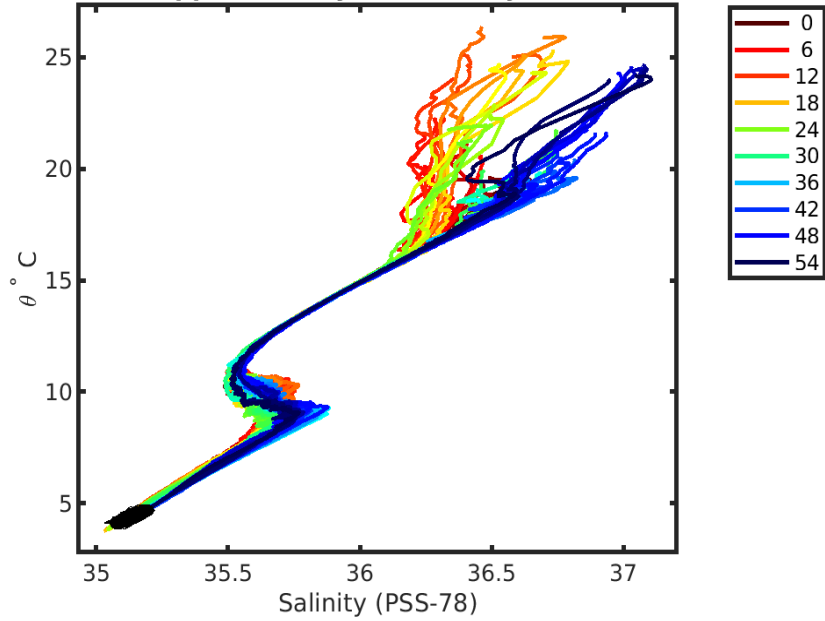
Pressure: : 1800 < pres < --  
 Theta: -- < theta < --  
 Breaks: 10.9754 34.8653 37

## Output

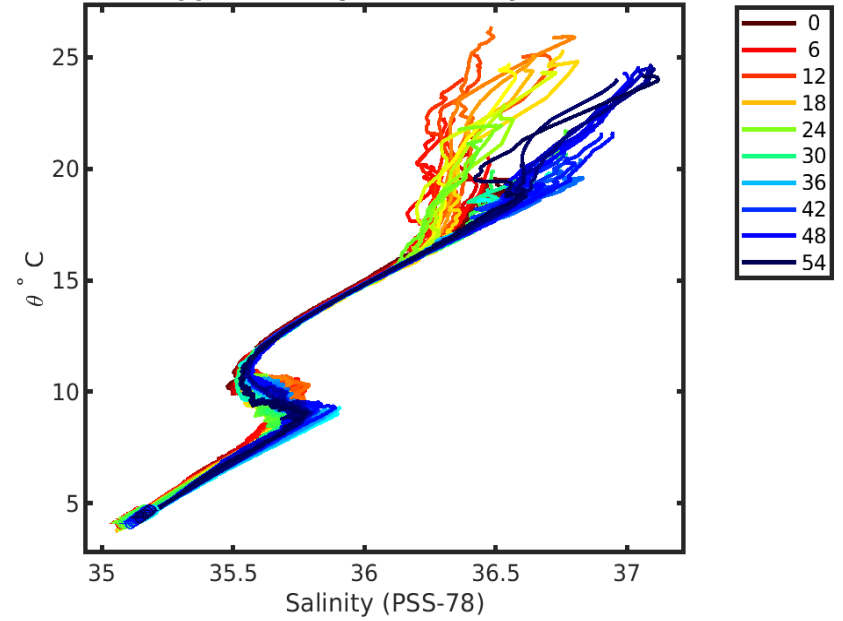
Pcond factor: [0.9997 - 1.0006]  
 Salinity Offset: [-0.012215 - 0.022735]



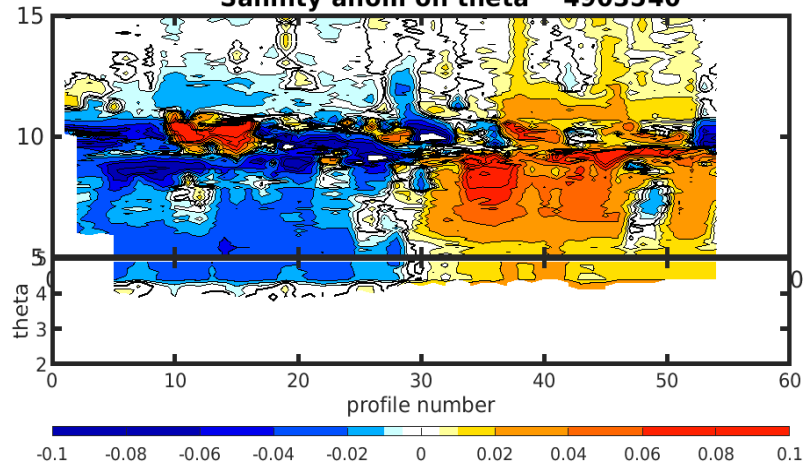
**4903540 uncalibrated float data (-)  
and mapped salinity (o) with objective errors**



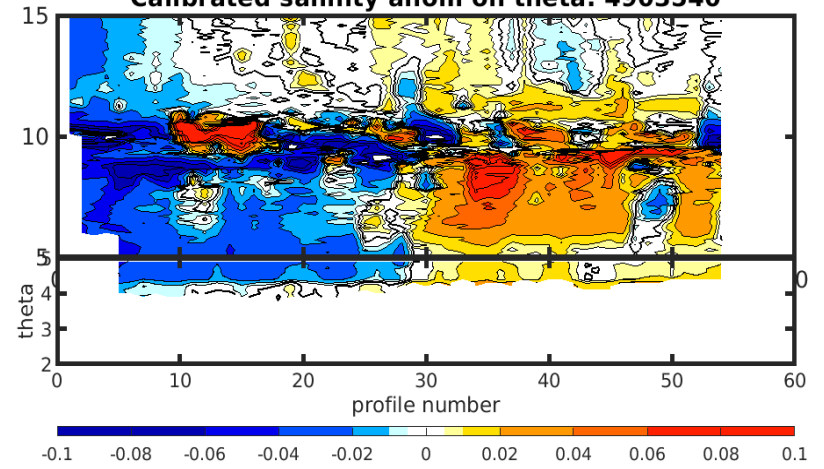
**4903540 calibrated float data (-)  
and mapped salinity (o) with objective errors**

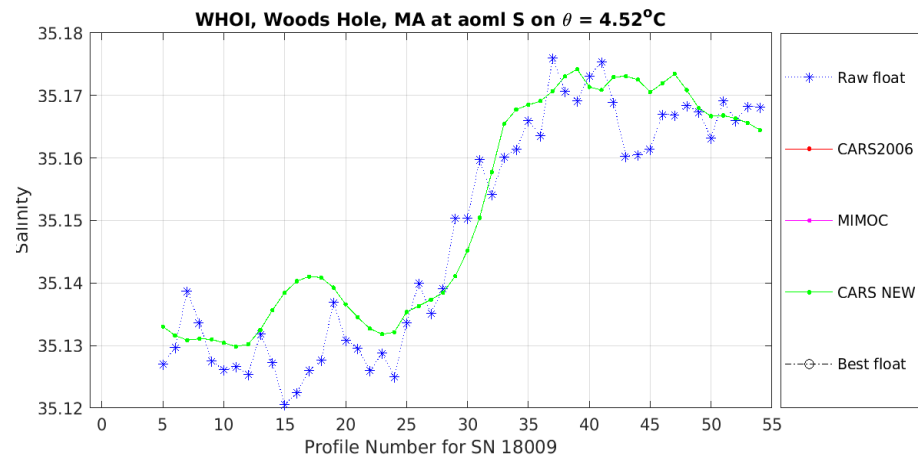
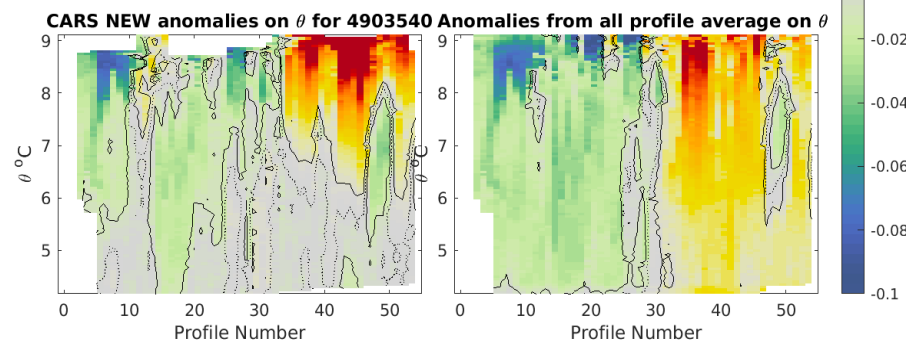
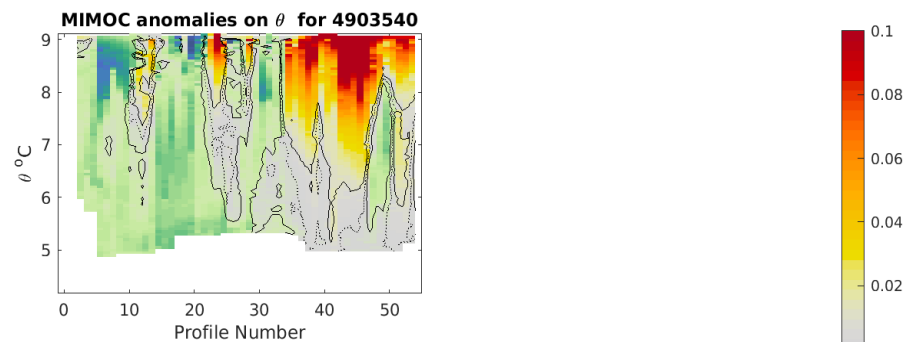
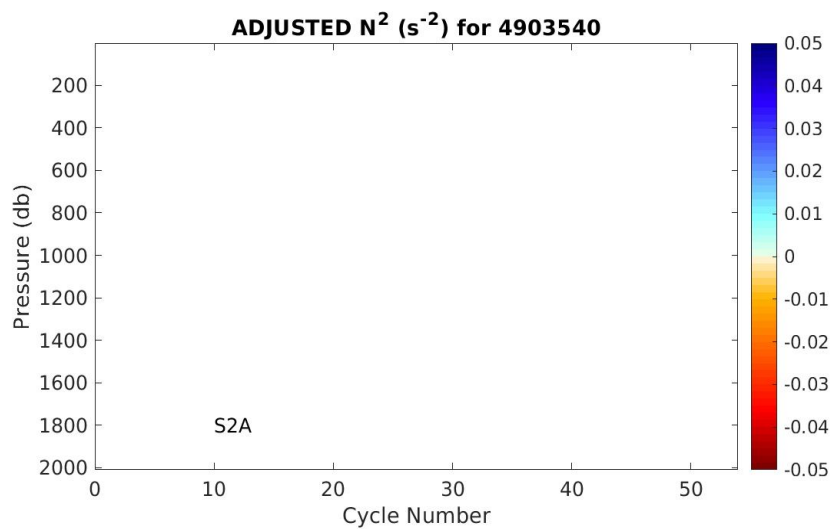
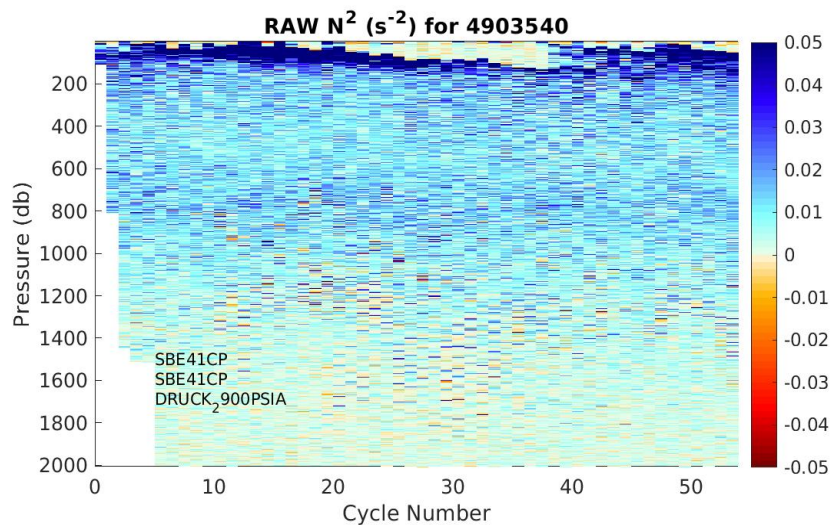


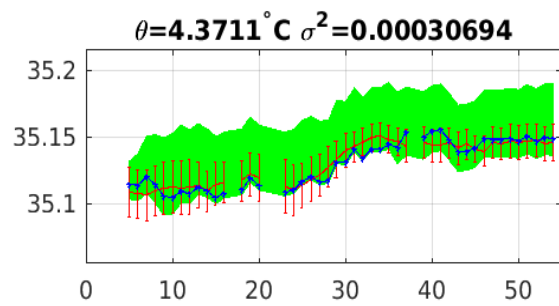
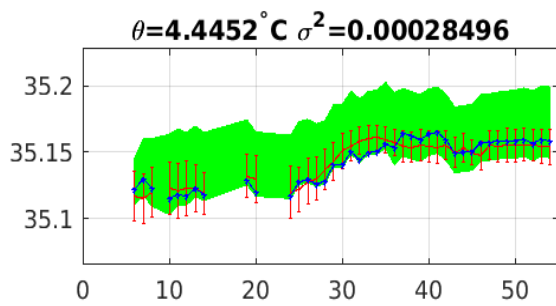
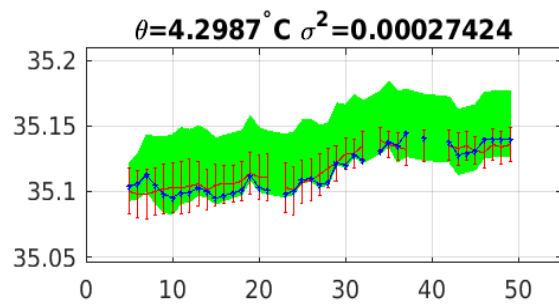
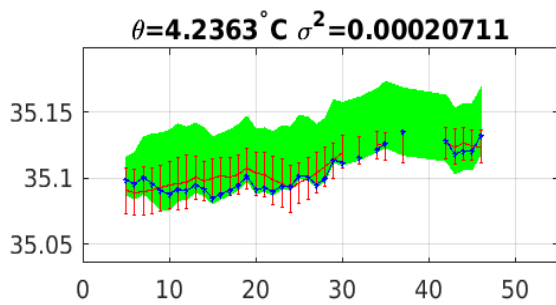
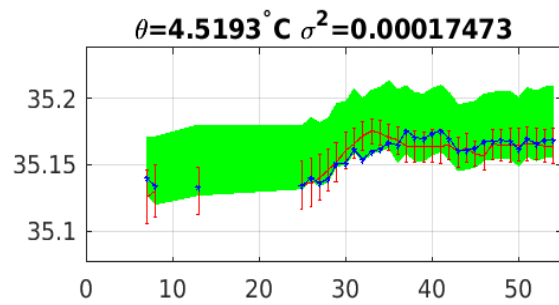
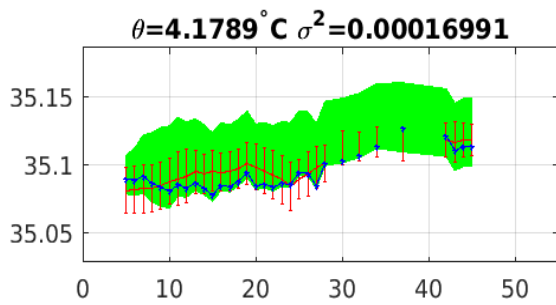
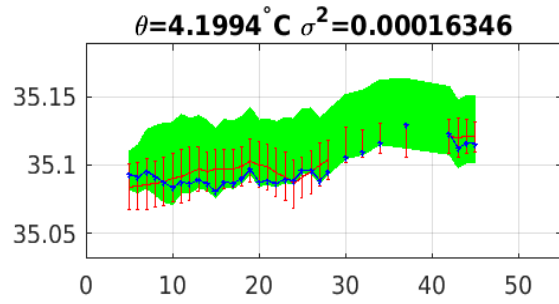
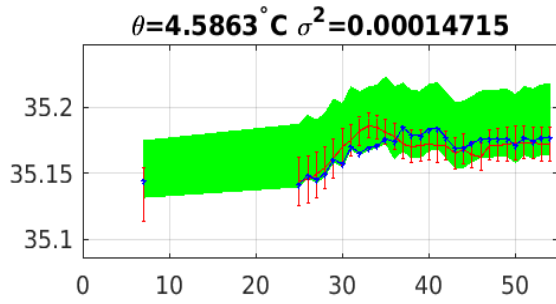
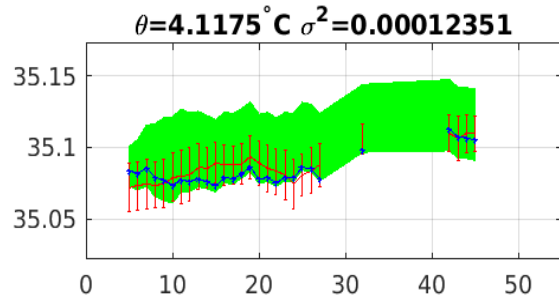
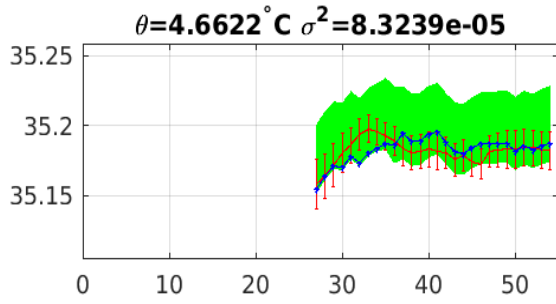
**Salinity anom on theta 4903540**



**Calibrated salinity anom on theta. 4903540**







Blue: uncal float; Red: mapped salinity; Green: cal float w/1xerr