

WMO 4903329 - OWC Summary Plots

DMQC Operator: Deb West-Mack
 Date: 19-Sep-2022 16:23:19
 Config File: cow_config_sm.txt

WMO Boxes: wmo_boxes_ctd21argo21.mat
 Historical Argo: ARGO_for_DMQC_2021V03_1XXXX.tar.gz
 Historical CTD: CTD_for_DMQC_2021V02_1.tgz

Map Scale

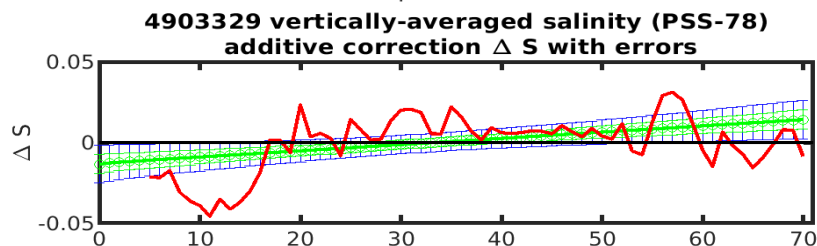
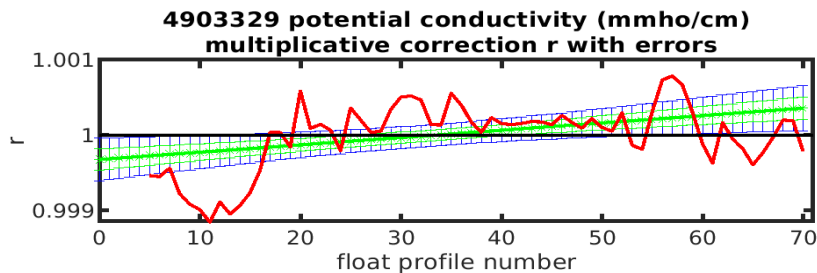
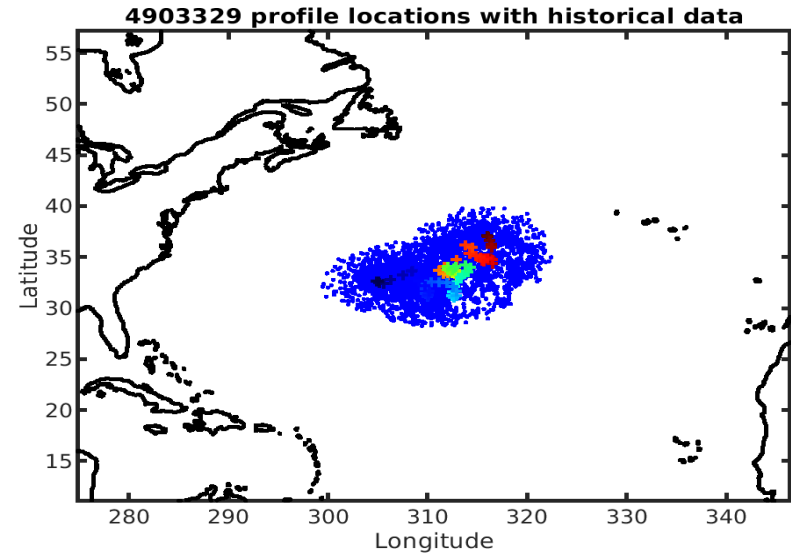
Longitude: 1° / 2°
 Latitude: 0.5° / 1°
 Age: 5yrs / 10yrs
 PV: 0
 SAF: 0

OWC Parameters

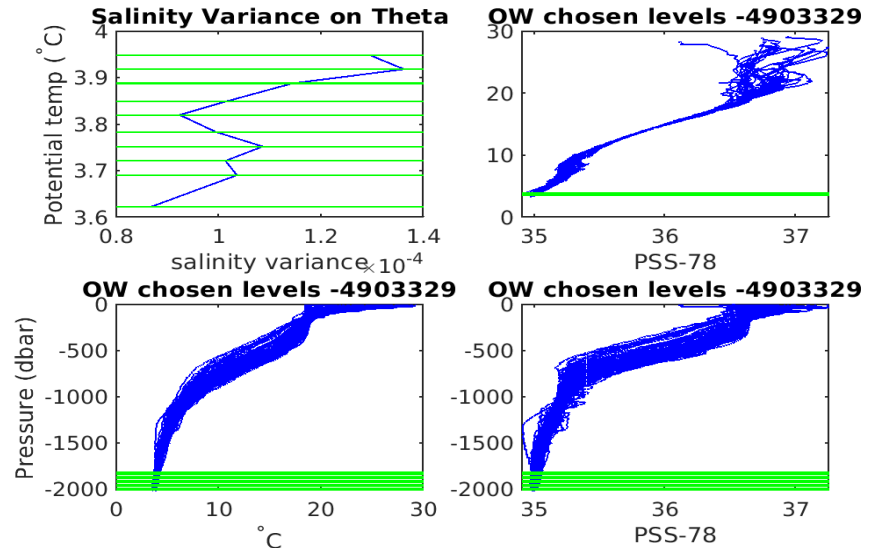
Pressure: : 1800 < pres < --
 Theta: -- < theta < --
 Breaks: --

Output

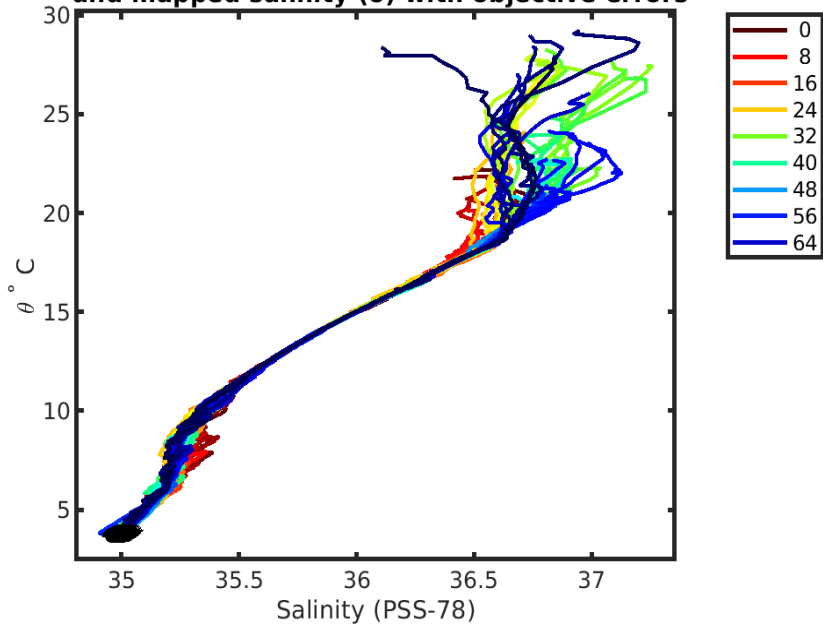
Pcond factor: [0.99968 - 1.0004]
 Salinity Offset: [-0.01339 - 0.014164]



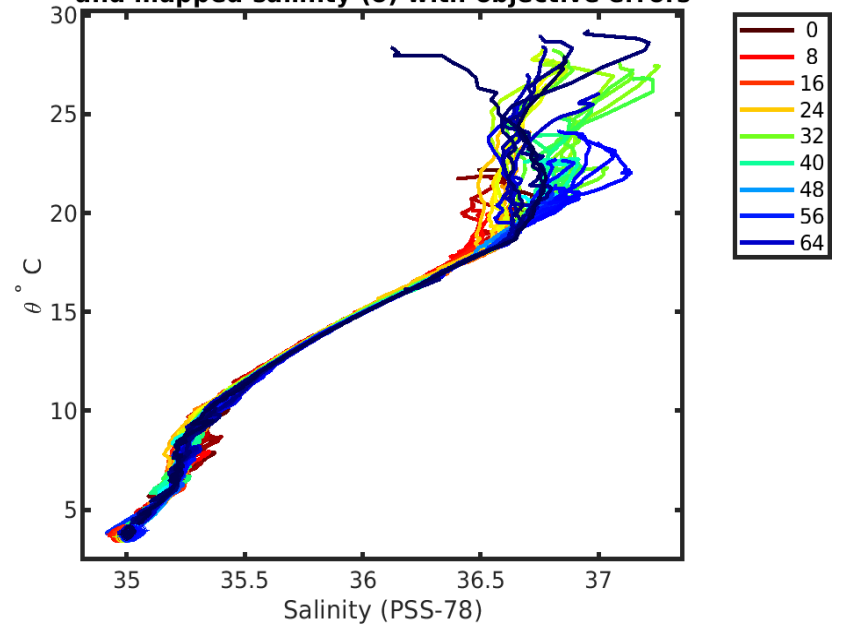
float profile number - blue: 2xcal error; green: 1xcal error; red: 1-1 profile f



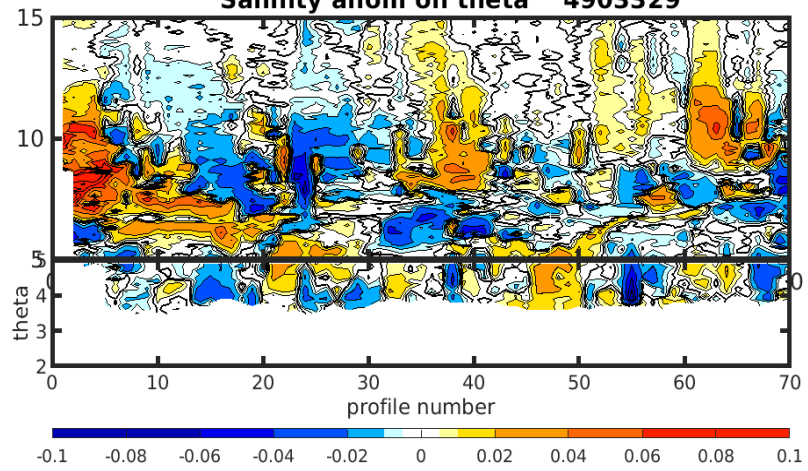
**4903329 uncalibrated float data (-)
and mapped salinity (o) with objective errors**



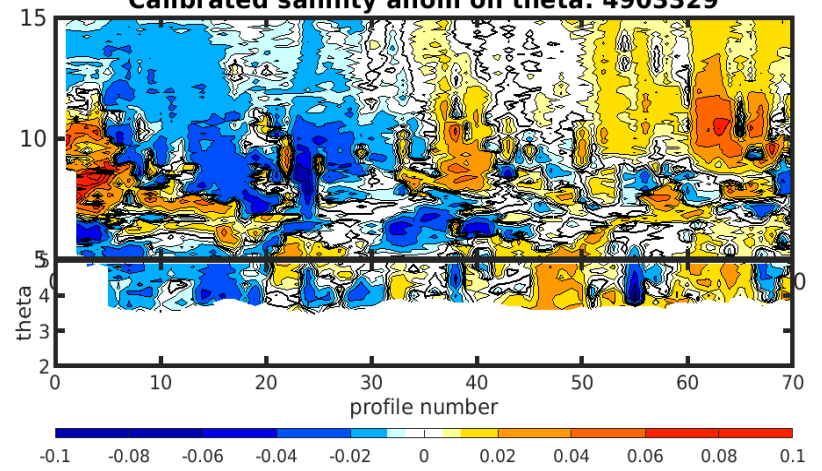
**4903329 calibrated float data (-)
and mapped salinity (o) with objective errors**

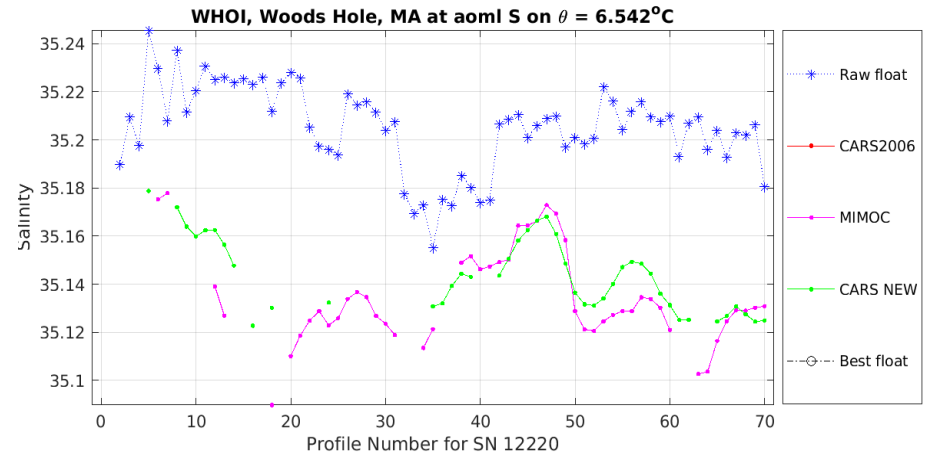
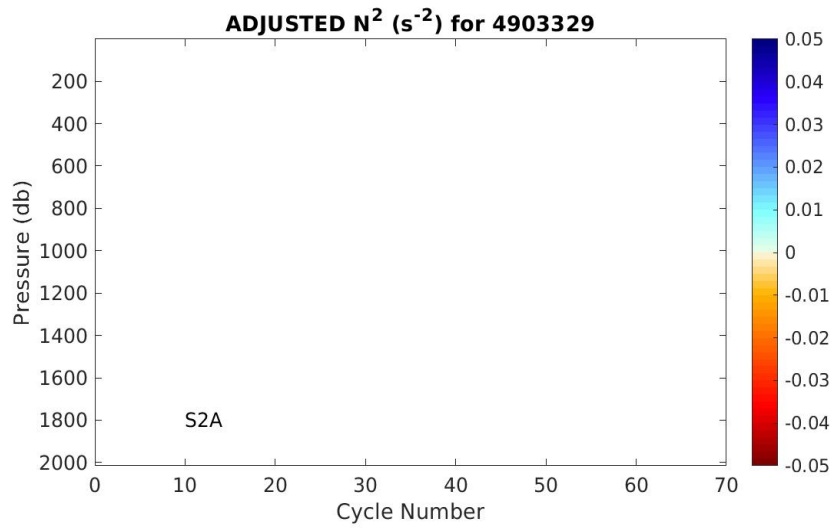
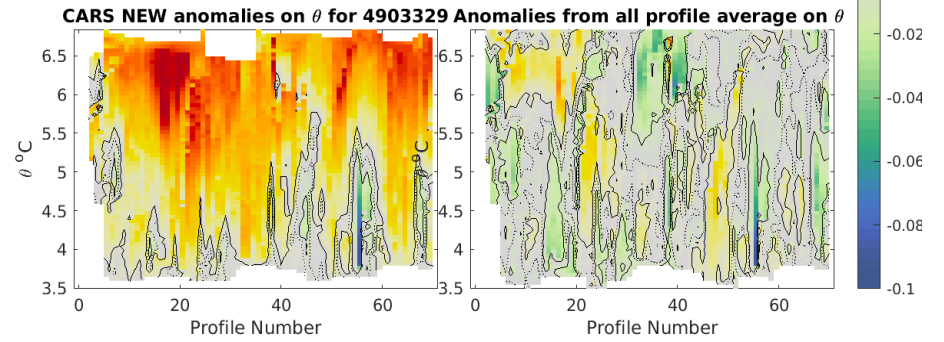
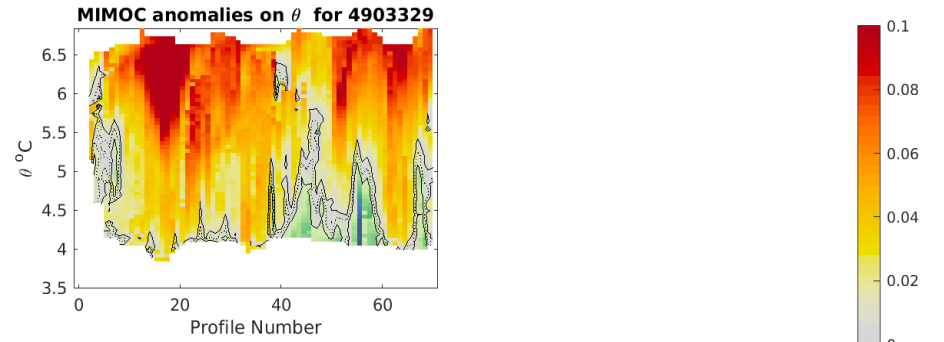
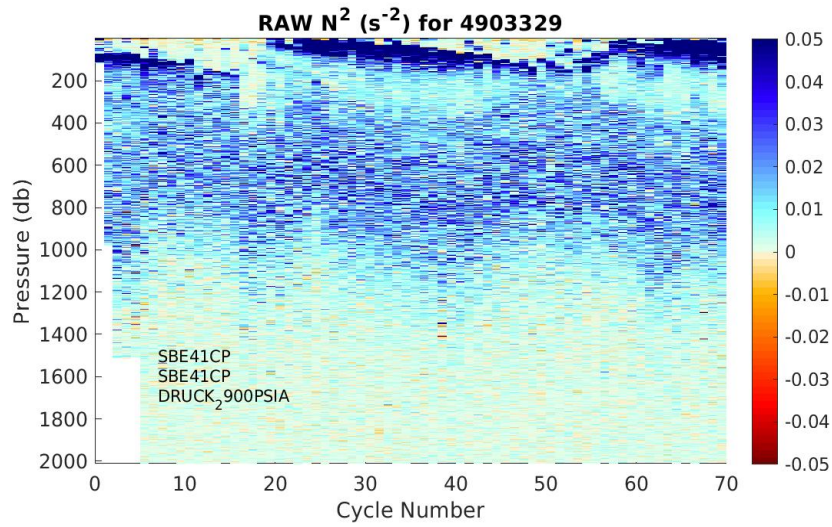


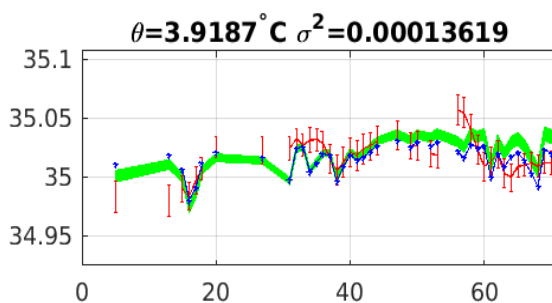
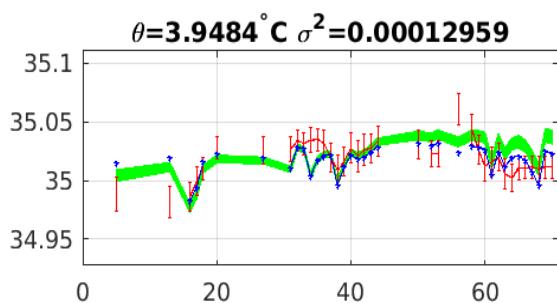
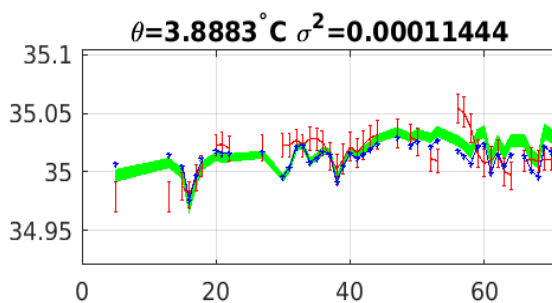
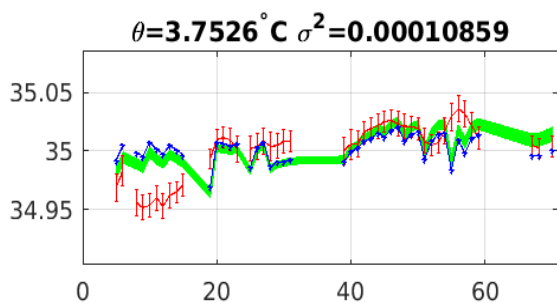
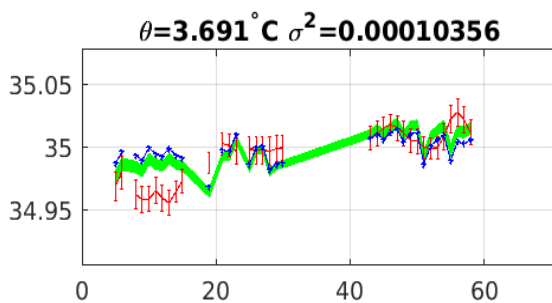
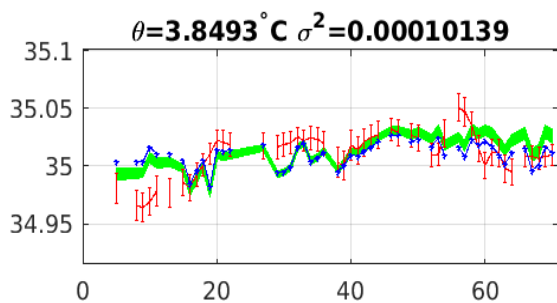
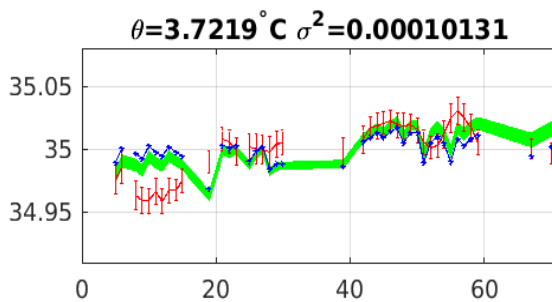
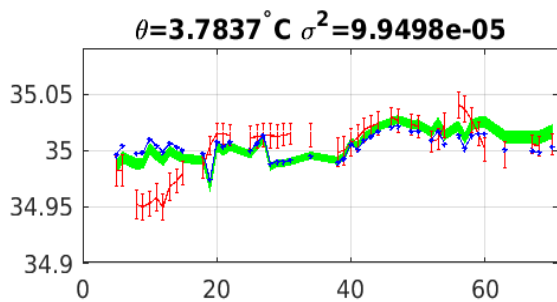
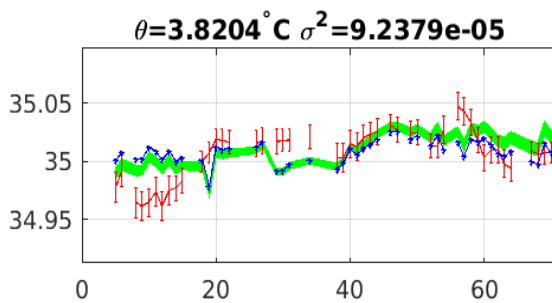
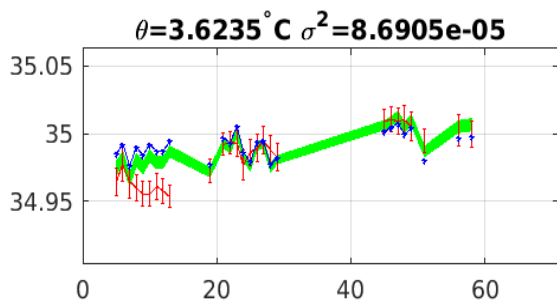
Salinity anom on theta 4903329



Calibrated salinity anom on theta. 4903329







Blue: uncal float; Red: mapped salinity; Green: cal float w/1xerr