

# WMO 4903265 - OWC Summary Plots

DMQC Operator: Deb West-Mack  
 Date: 25-Jul-2023 14:58:47  
 Cycles: 0 - 126  
 Dfiles: 0 - 61

Config File: cow\_config\_sm.txt  
 WMO Boxes: wmo\_boxes\_ctd21argo22.mat  
 Historical Argo: ARGO\_for\_DMQC\_2022V03\_1XXX.tar.gz  
 Historical CTD: CTD\_for\_DMQC\_2021V02\_1.tgz

## Map Scale

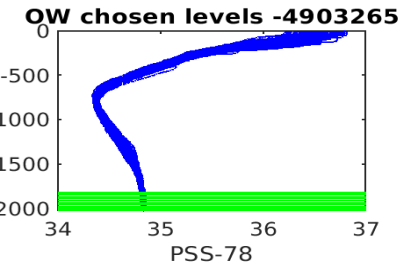
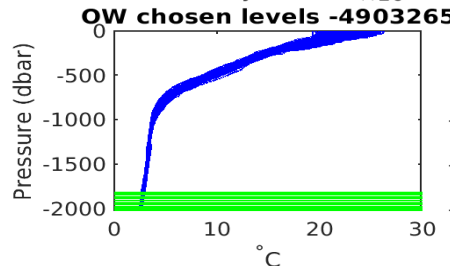
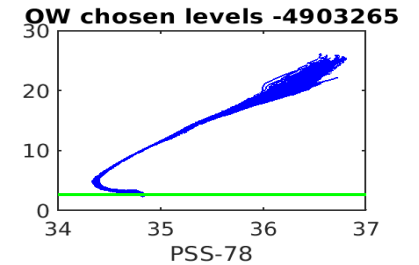
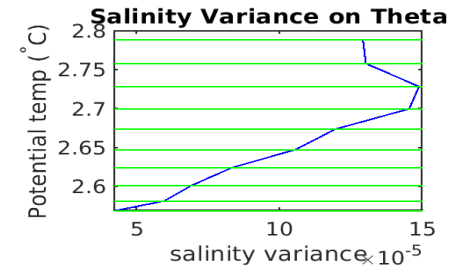
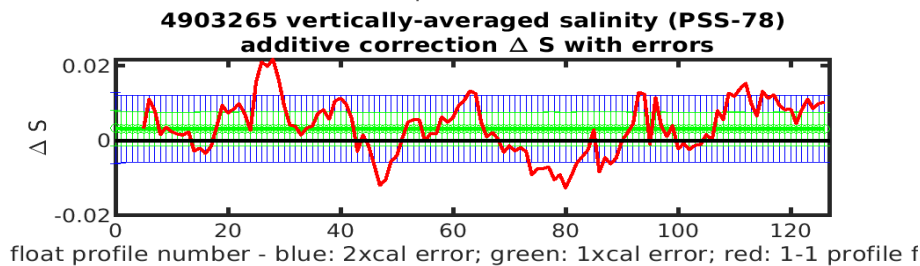
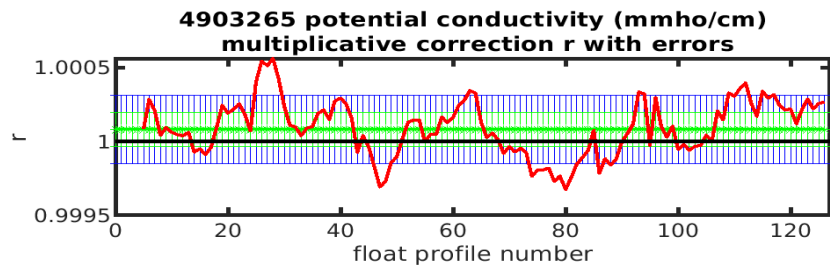
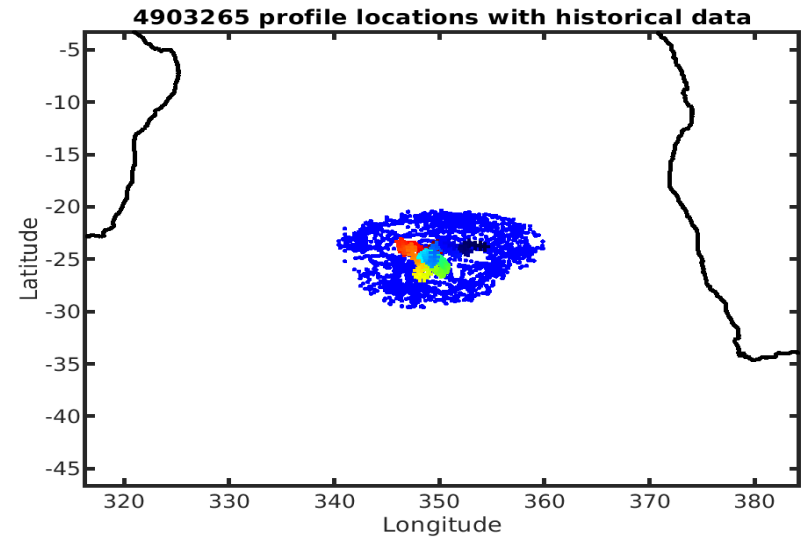
Longitude: 1° / 2°  
 Latitude: 0.5° / 1°  
 Age: 5yrs / 10yrs  
 PV: 0  
 SAF: 0

## OWC Parameters

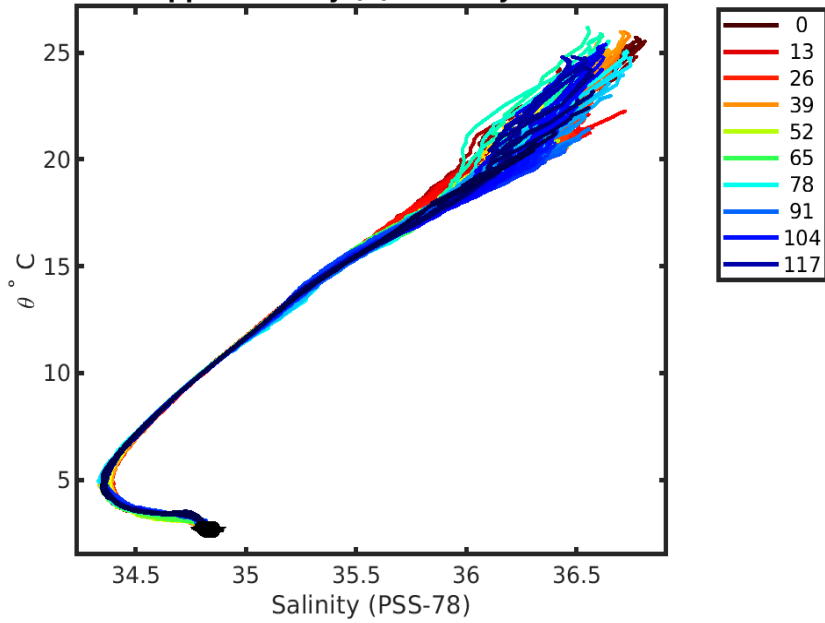
Pressure: : 1800 < pres < --  
 Theta: -- < theta < --  
 Breaks: --

## Output

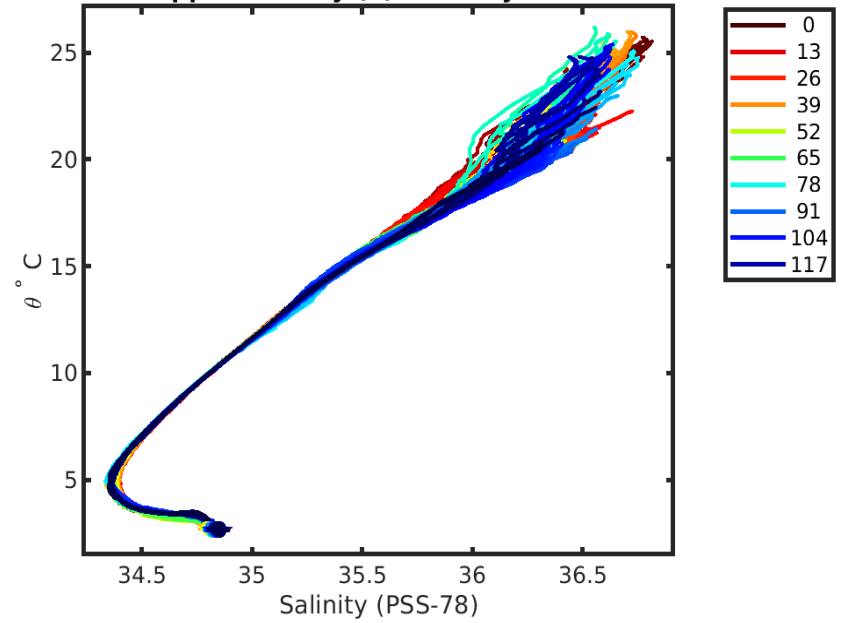
Pcond factor: 1.0001  
 Salinity Offset: [0.003152 - 0.0033421]



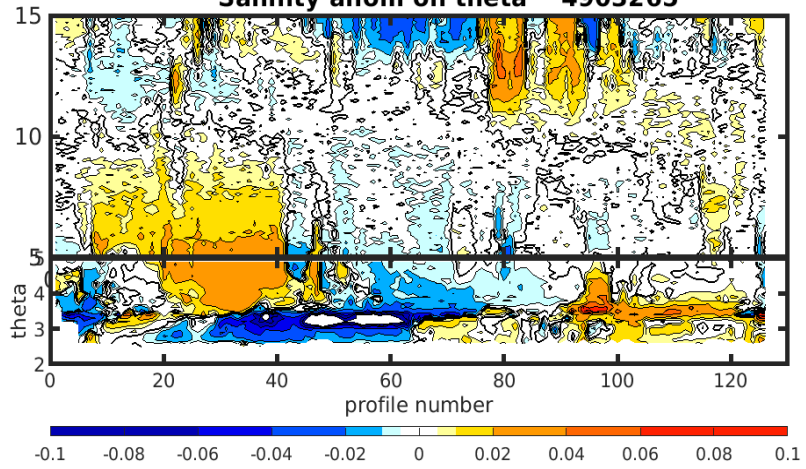
**4903265 uncalibrated float data (-)  
and mapped salinity (o) with objective errors**



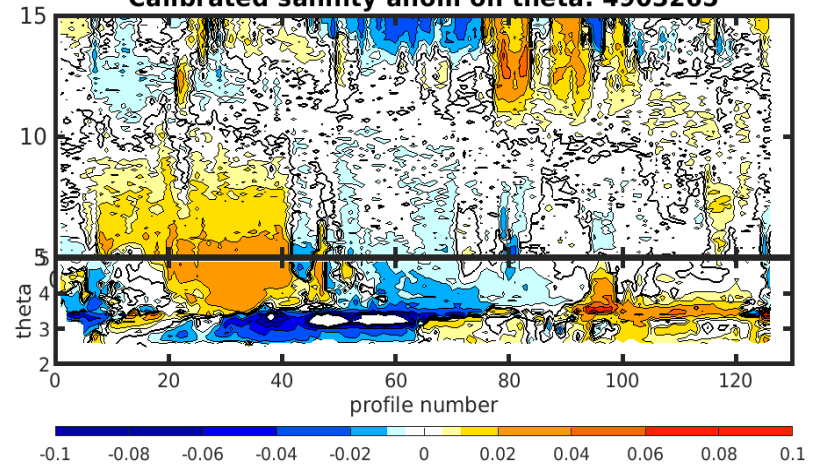
**4903265 calibrated float data (-)  
and mapped salinity (o) with objective errors**

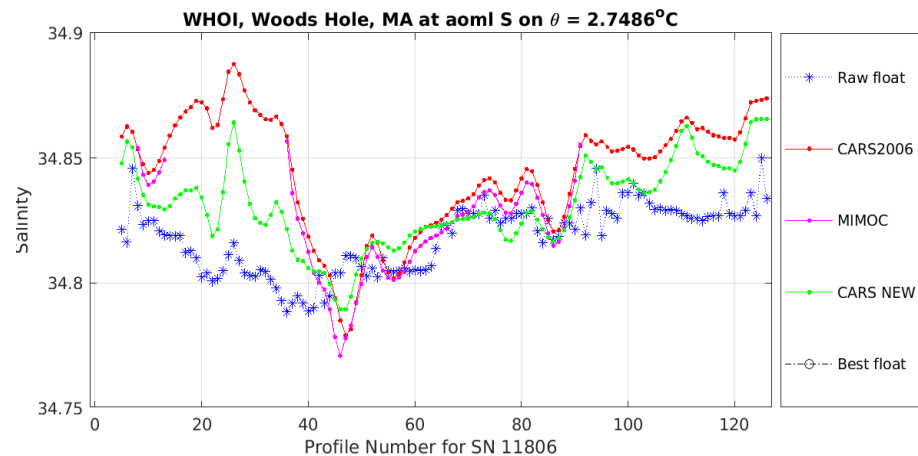
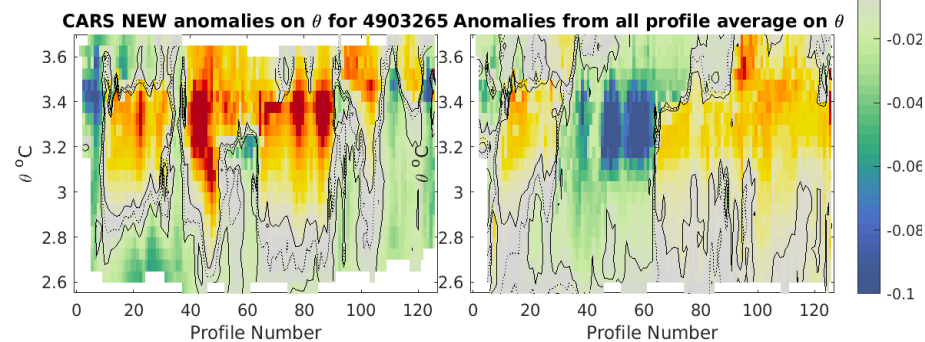
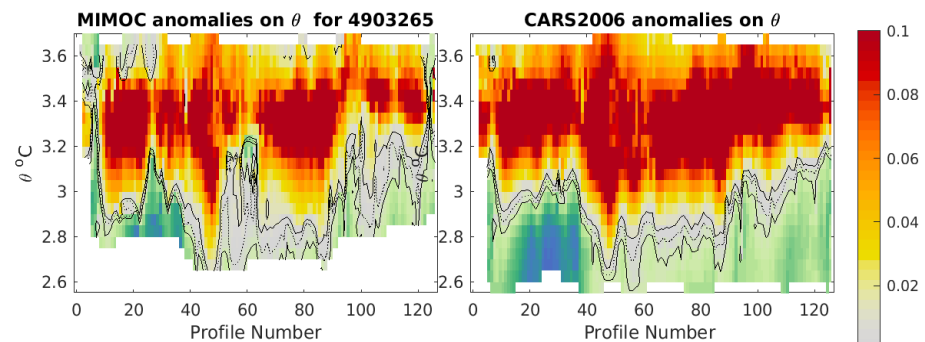
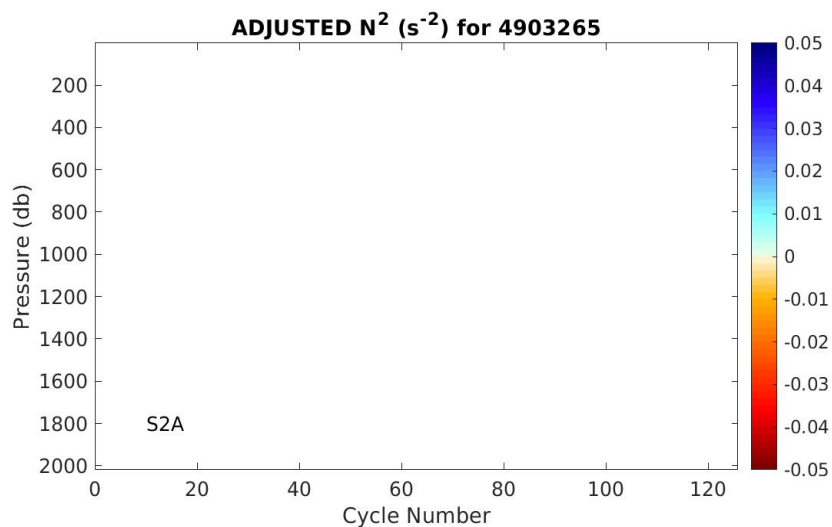
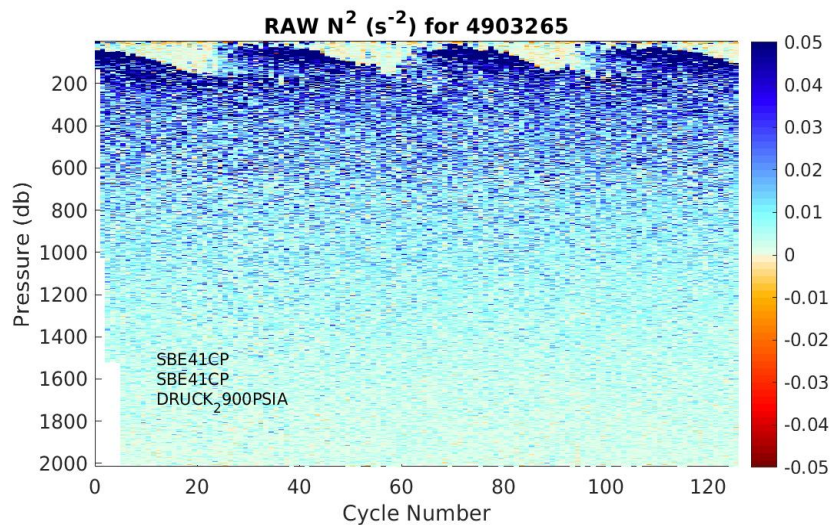


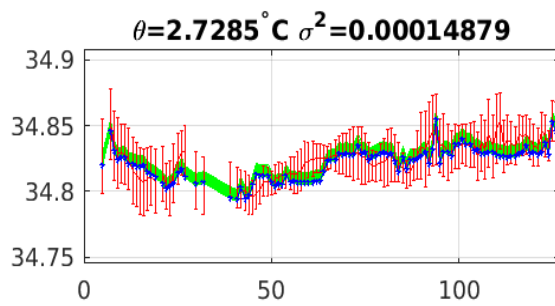
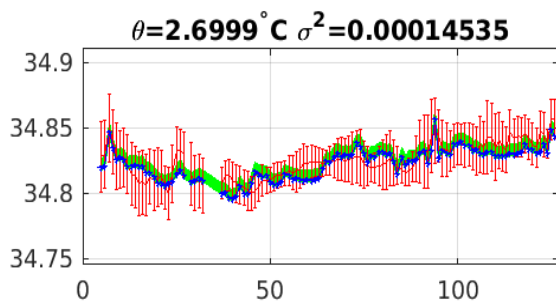
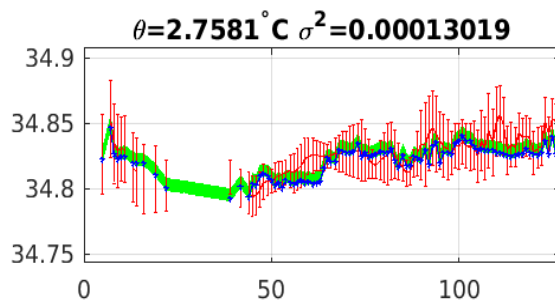
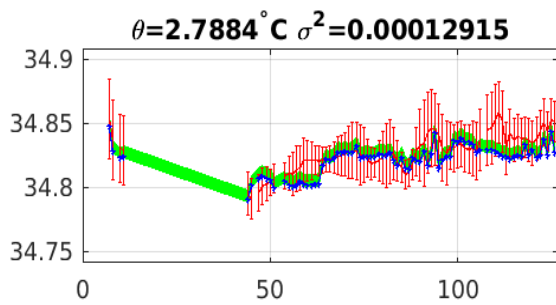
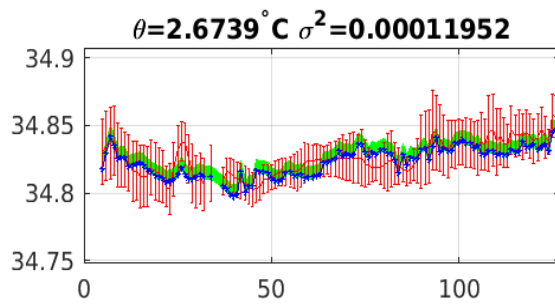
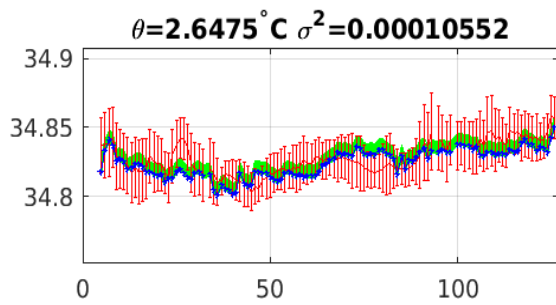
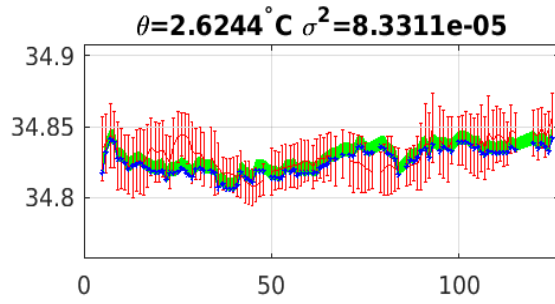
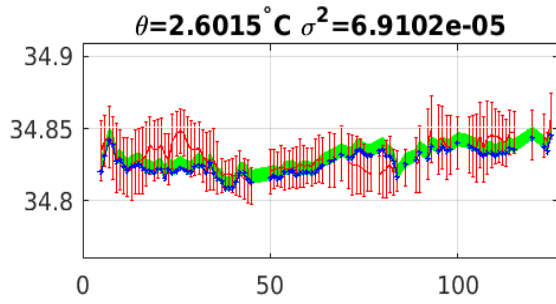
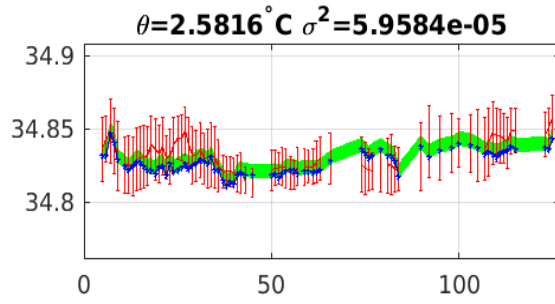
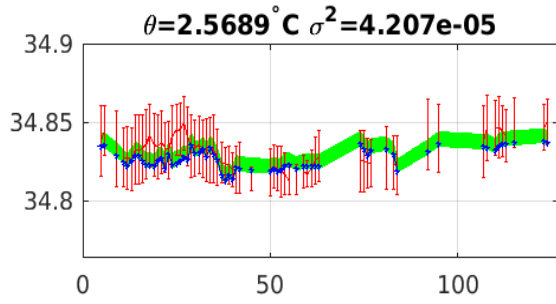
**Salinity anom on theta 4903265**



**Calibrated salinity anom on theta. 4903265**







Blue: uncal float; Red: mapped salinity; Green: cal float w/1xerr