

# WMO 4903213 - OWC Summary Plots

DMQC Operator: Deb West-Mack  
 Date: 31-Oct-2022 13:28:35  
 Config File: cow\_config\_sm.txt

WMO Boxes: wmo\_boxes\_ctd21argo21.mat  
 Historical Argo: ARGO\_for\_DMQC\_2021V03\_1XXX.tar.gz  
 Historical CTD: CTD\_for\_DMQC\_2021V02\_1.tgz

## Map Scale

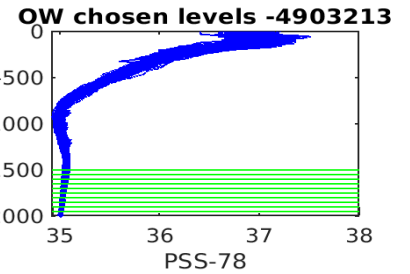
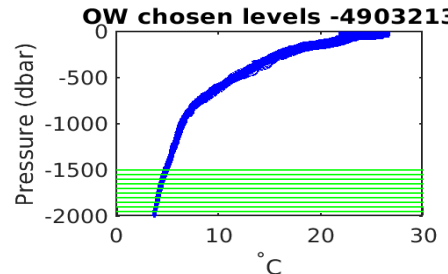
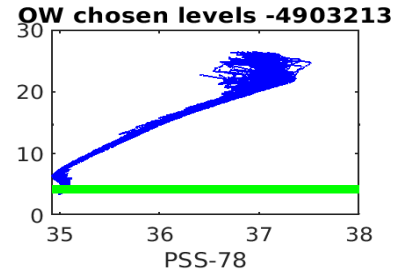
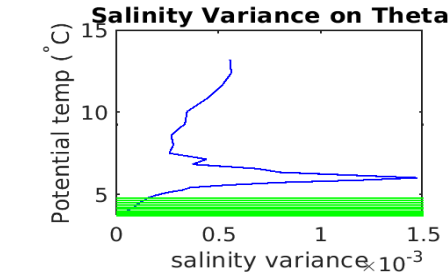
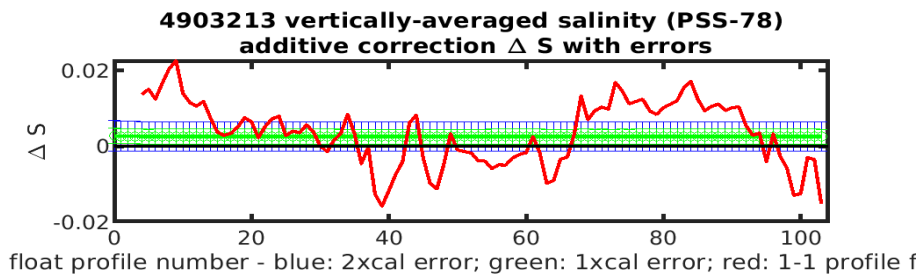
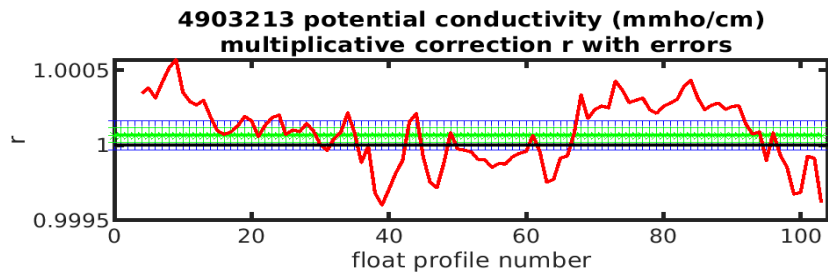
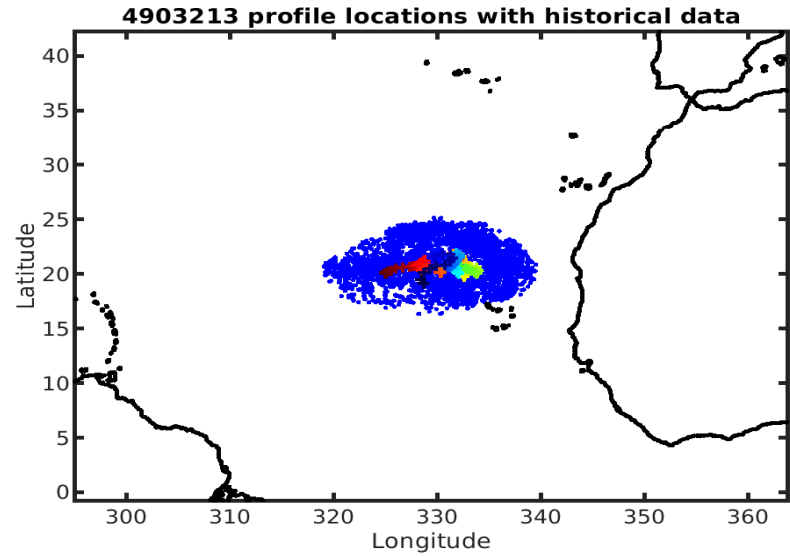
Longitude: 1° / 2°  
 Latitude: 0.5° / 1°  
 Age: 5yrs / 10yrs  
 PV: 0  
 SAF: 0

## OWC Parameters

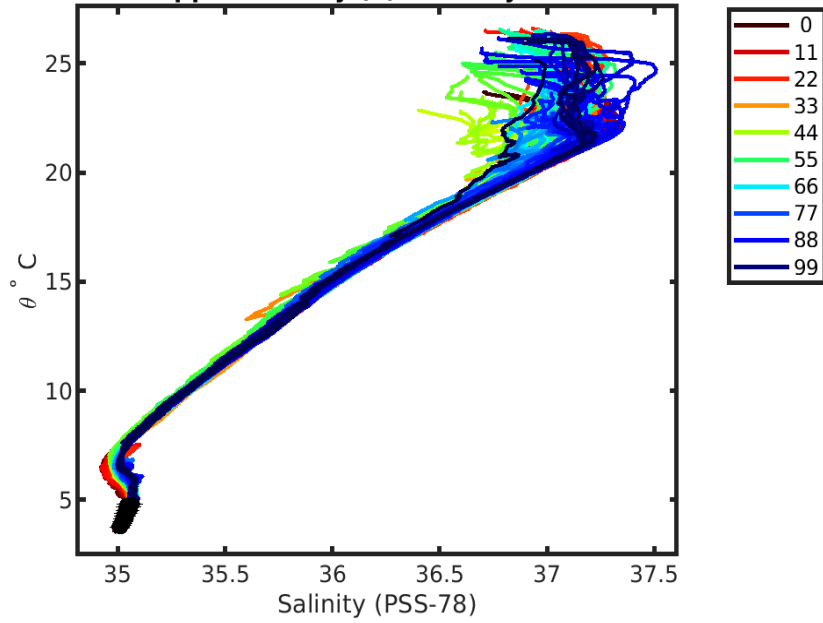
Pressure: : -- < pres < --  
 Theta: -- < theta < --  
 Breaks: --

## Output

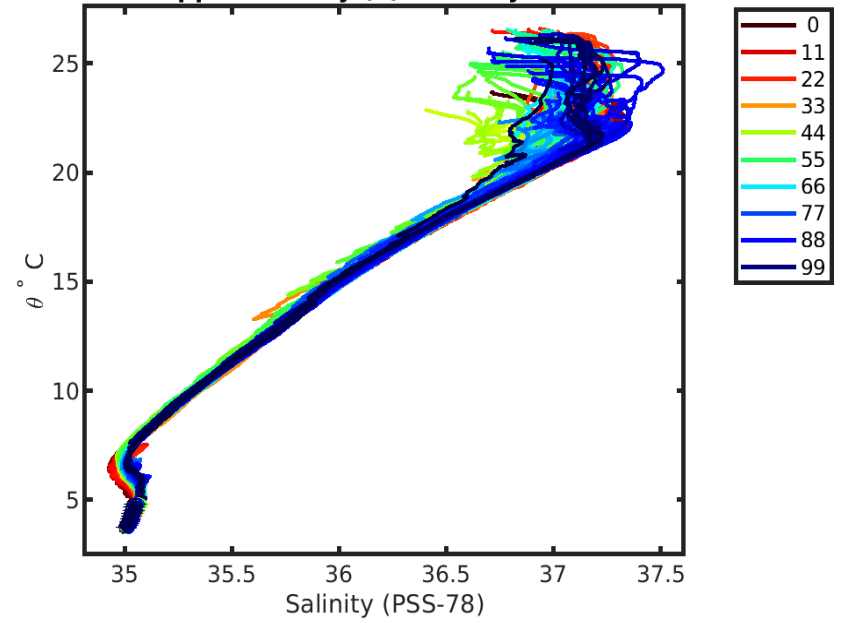
Pcond factor: 1.0001  
 Salinity Offset: [0.0025955 - 0.0027377]



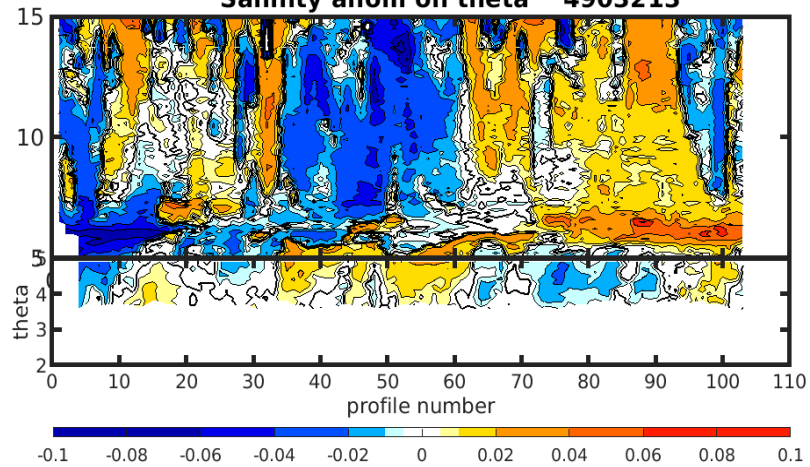
4903213 uncalibrated float data (-) and mapped salinity (o) with objective errors



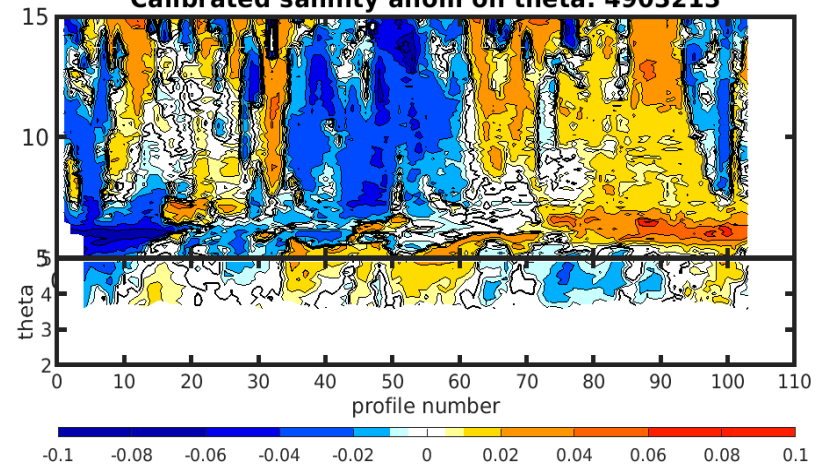
4903213 calibrated float data (-) and mapped salinity (o) with objective errors

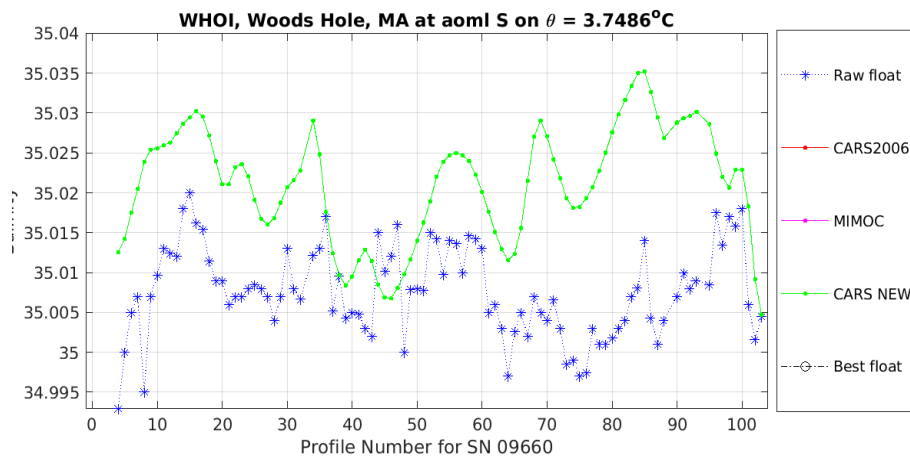
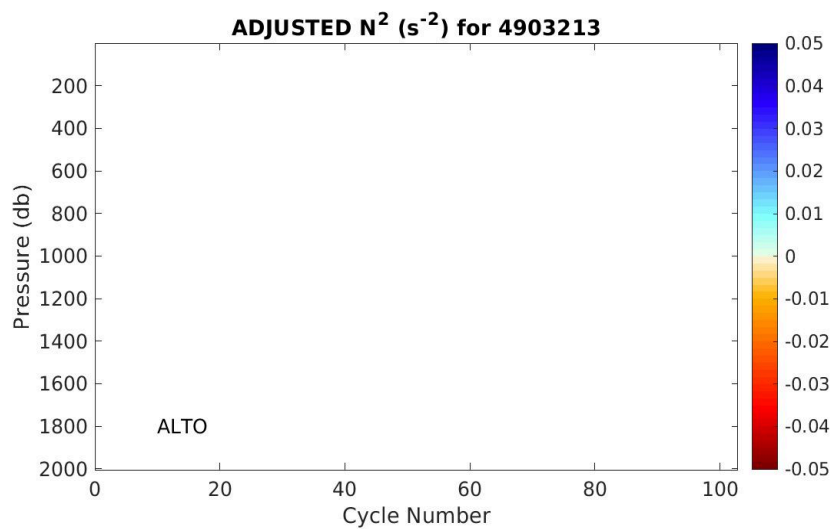
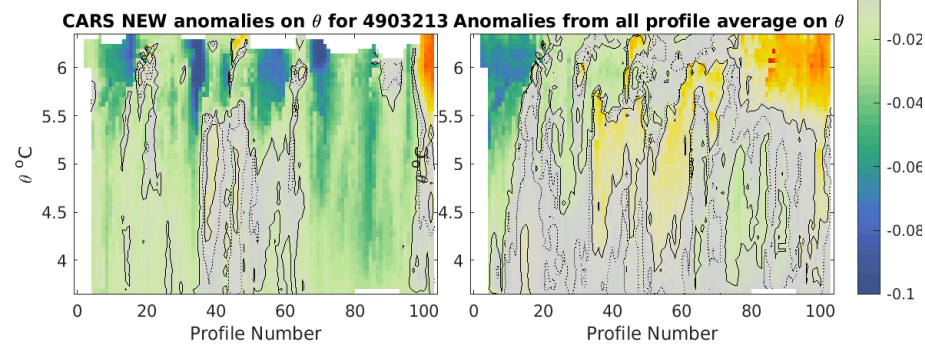
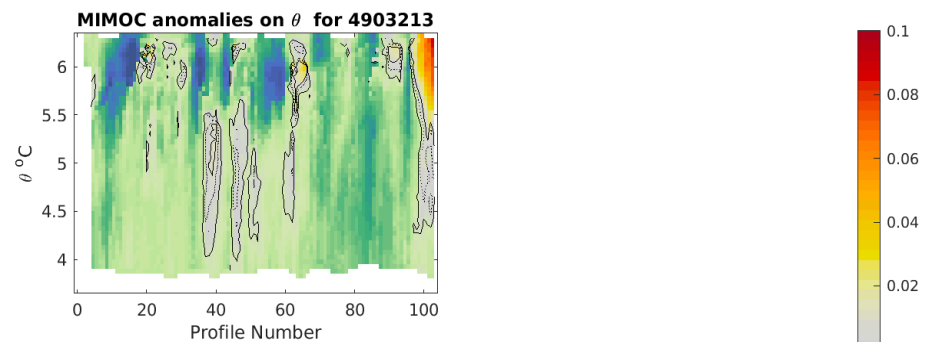
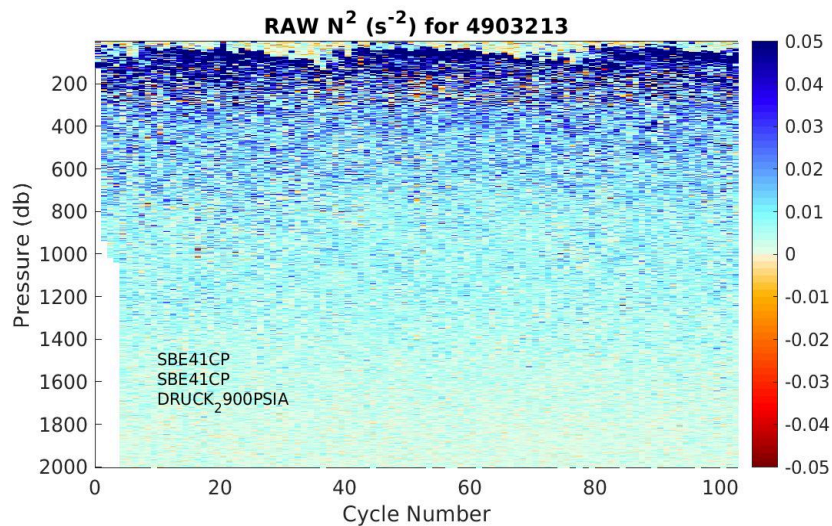


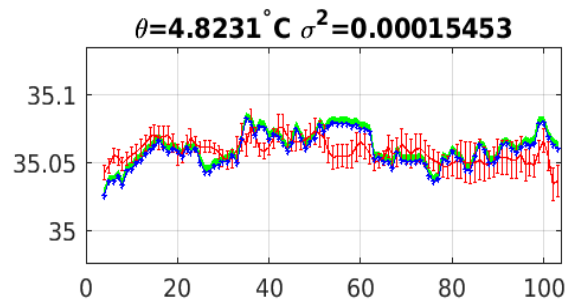
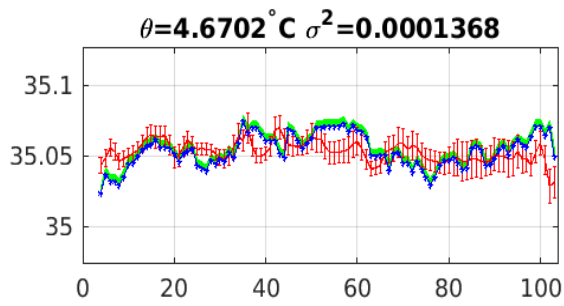
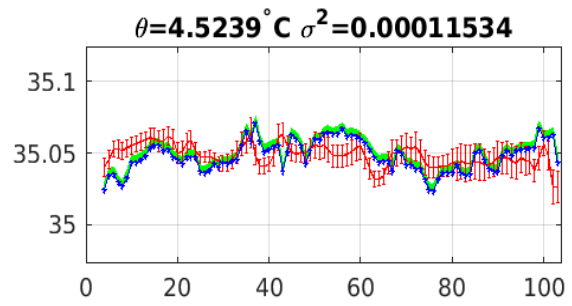
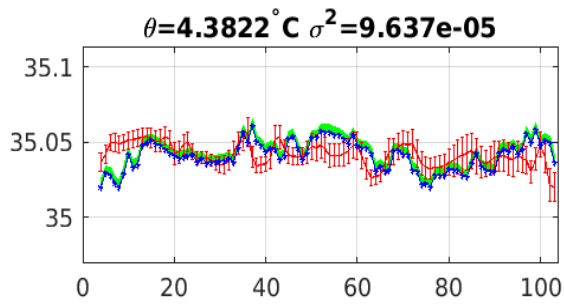
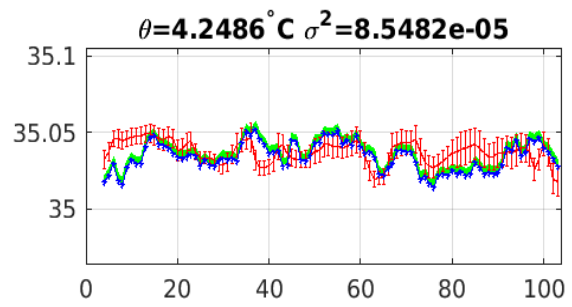
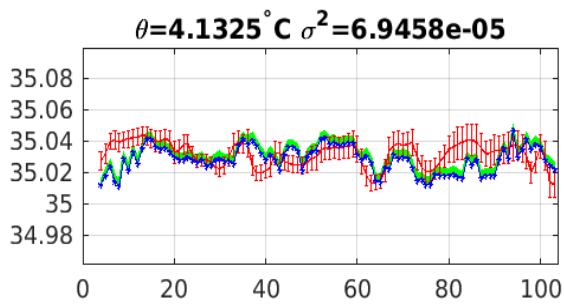
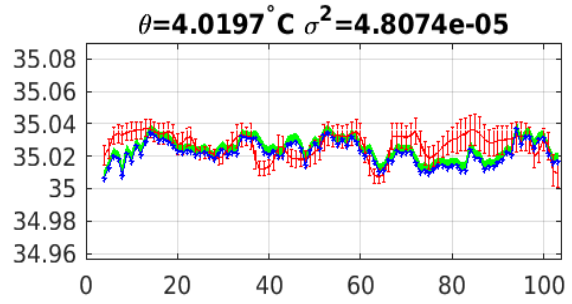
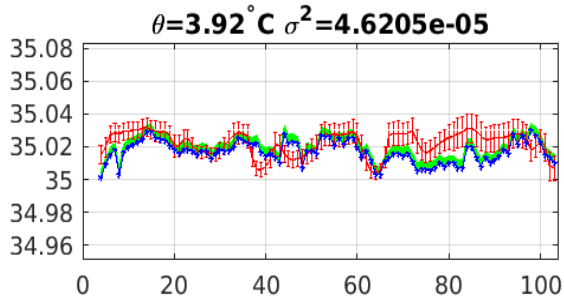
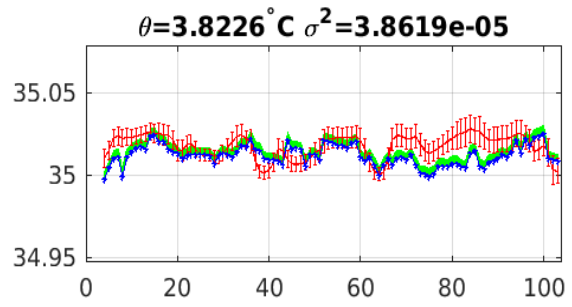
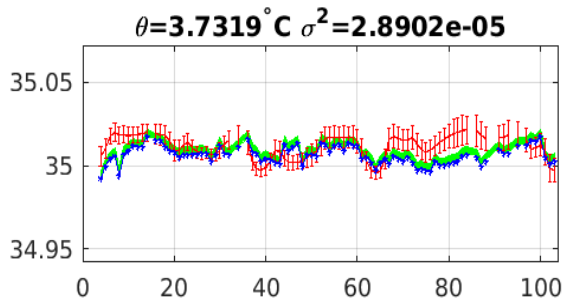
Salinity anom on theta 4903213



Calibrated salinity anom on theta. 4903213







Blue: uncal float; Red: mapped salinity; Green: cal float w/1xerr