

# WMO 3902346 - OWC Summary Plots

DMQC Operator: Lola Pierson  
 Date: 18-Jun-2026 11:54:57  
 Cycles: 0 - 58  
 Dfiles: -

Config File: cow\_config\_sm.txt  
 WMO Boxes: wmo\_boxes\_ctdargo.mat  
 Historical Argo: ARGO\_for\_DMQC\_2025V03\_1XXX.tar.gz  
 Historical CTD: CTD\_for\_DMQC\_2024V01\_1.tar.gz

## Map Scale

Longitude: 1° / 2°

Latitude: 0.5° / 1°

Age: 5yrs / 10yrs

PV: 0

SAF: 0

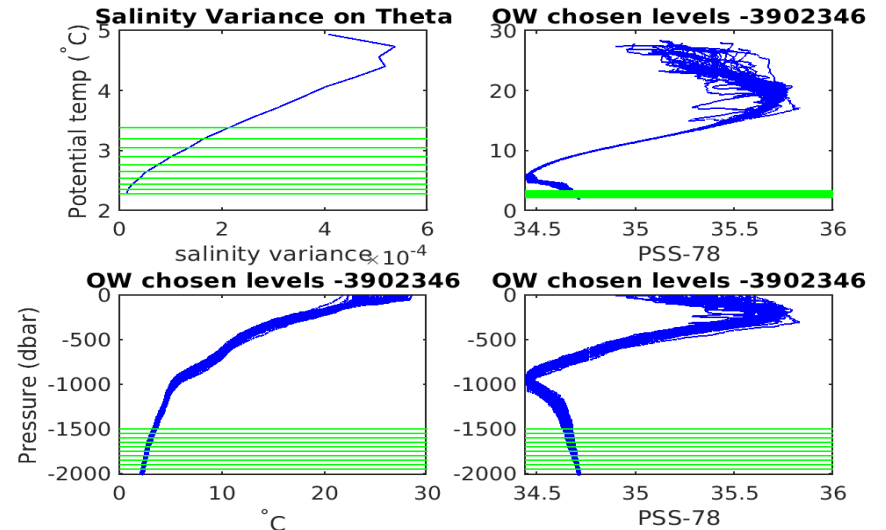
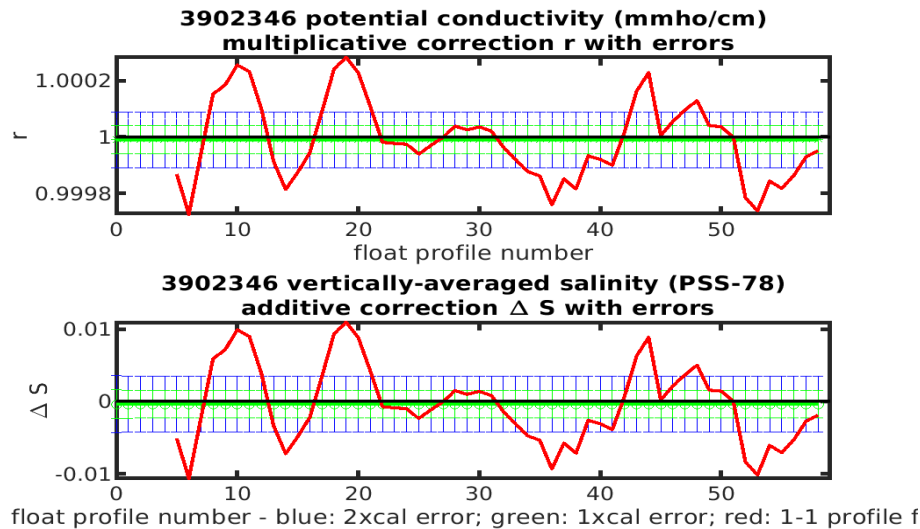
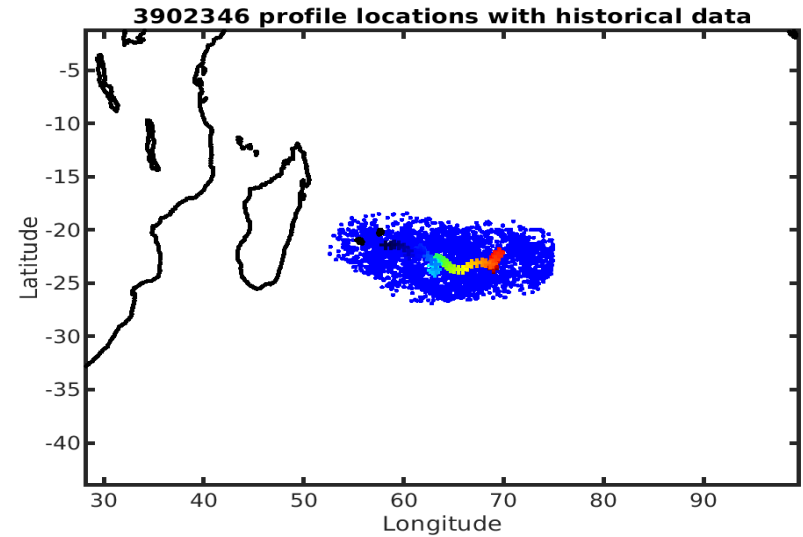
## OWC Parameters

Pressure: : 1000 < pres  
 < --  
 Theta: -- < theta < --  
 Breaks: --

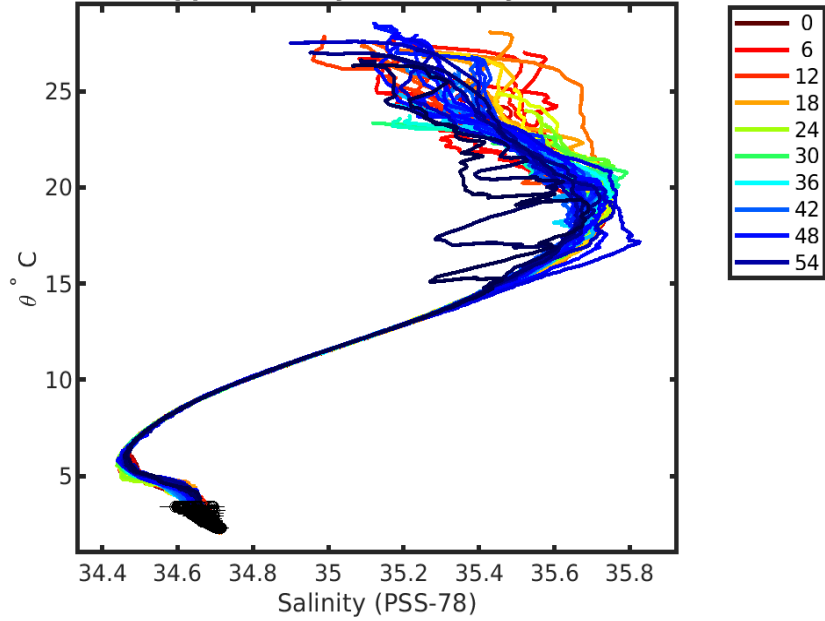
## Output

Pcond factor: 0.99999

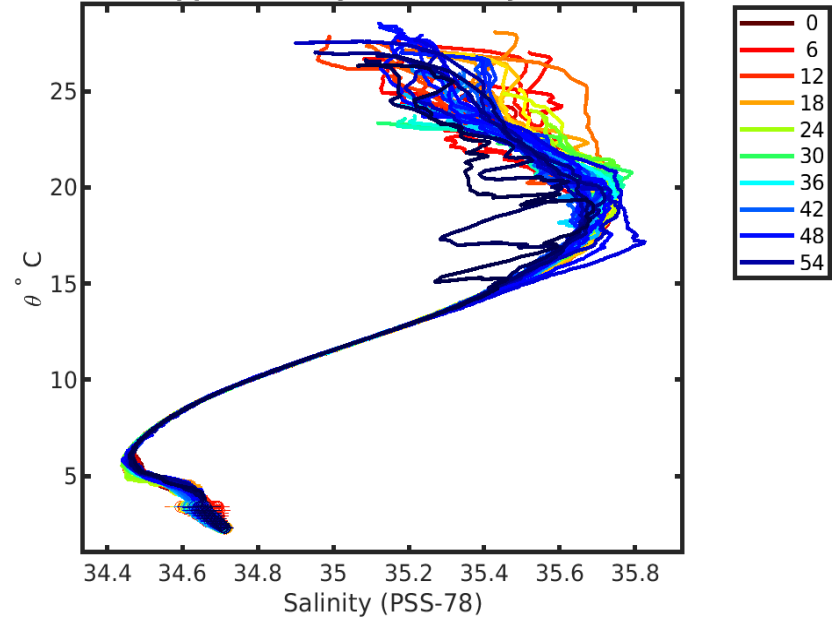
Salinity Offset: [-0.00039986 - -0.00038852]



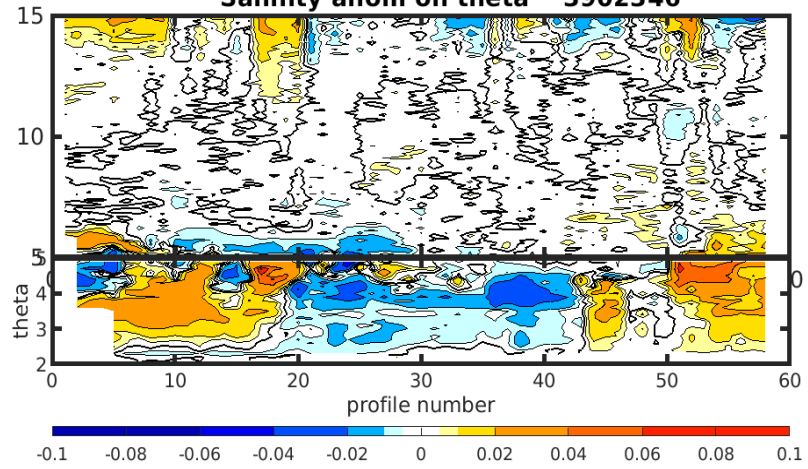
**3902346 uncalibrated float data (-)  
and mapped salinity (o) with objective errors**



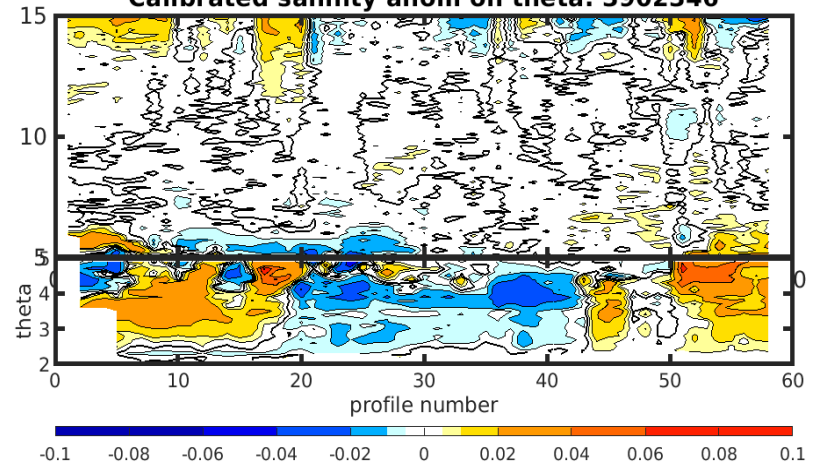
**3902346 calibrated float data (-)  
and mapped salinity (o) with objective errors**

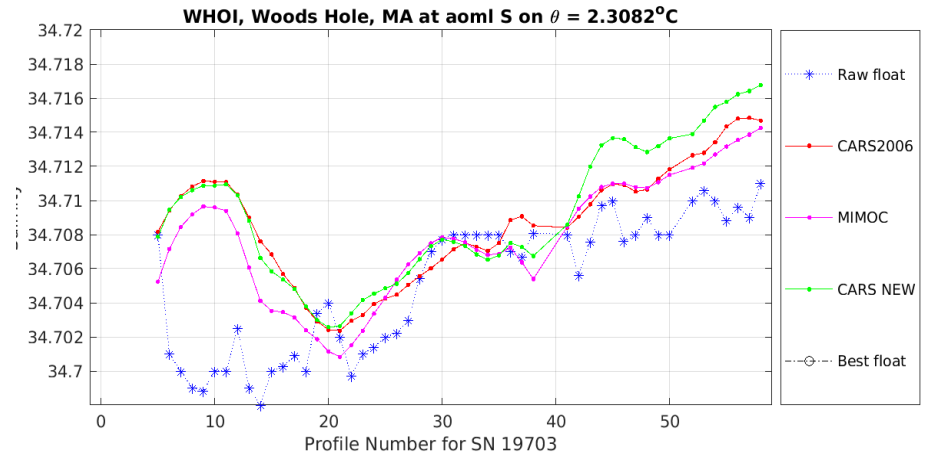
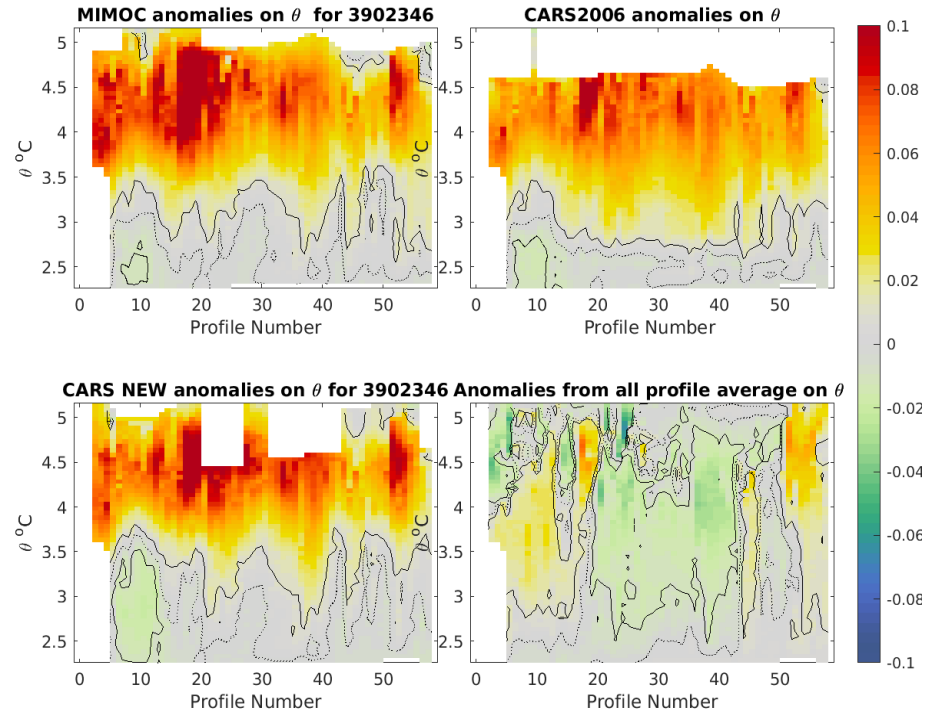
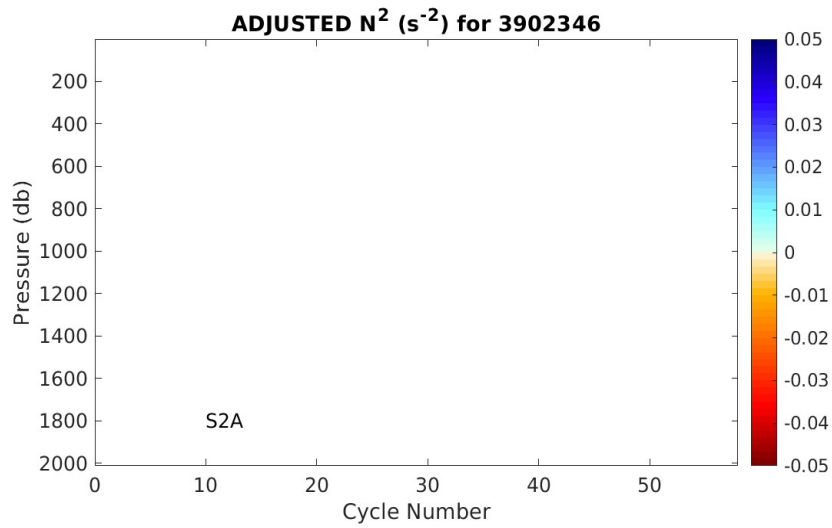
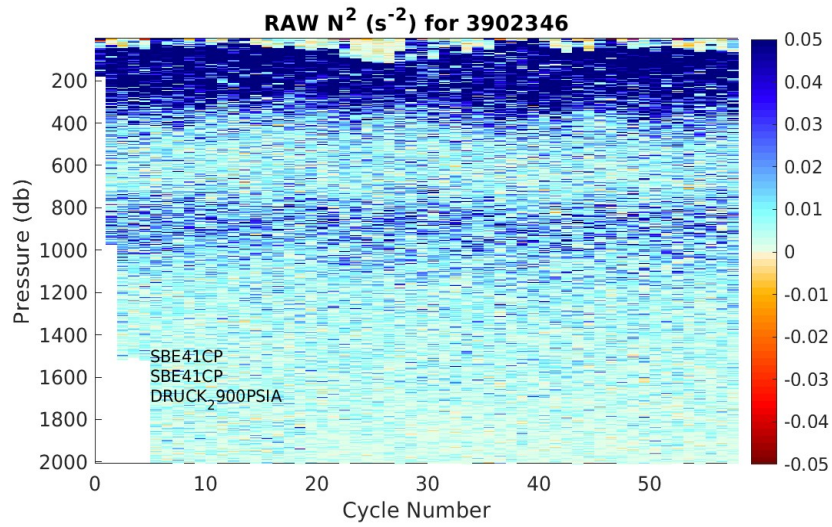


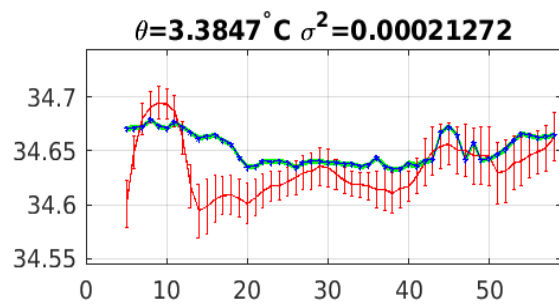
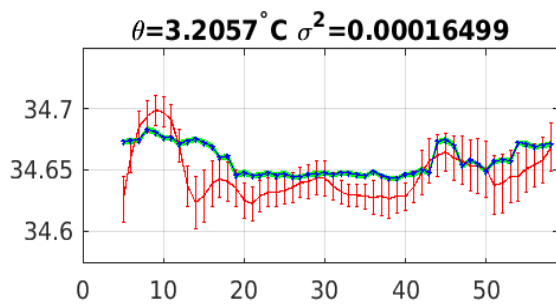
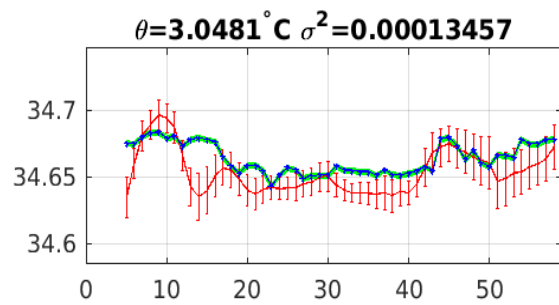
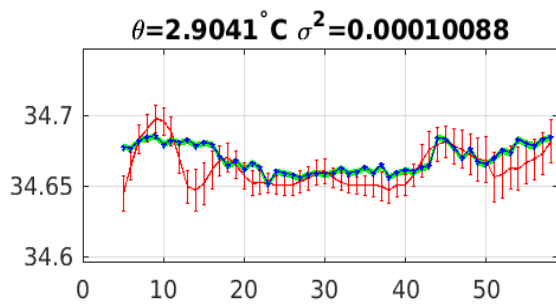
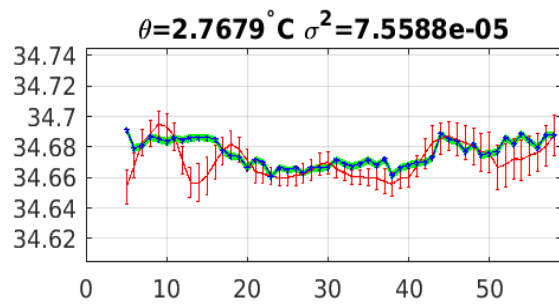
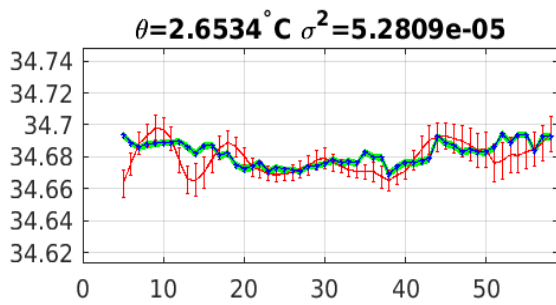
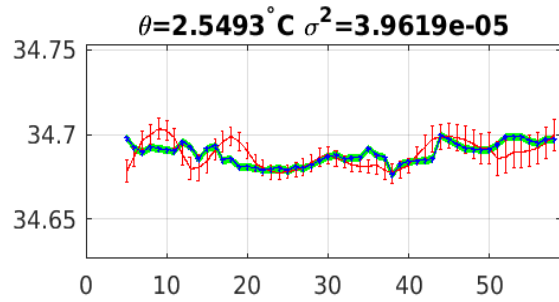
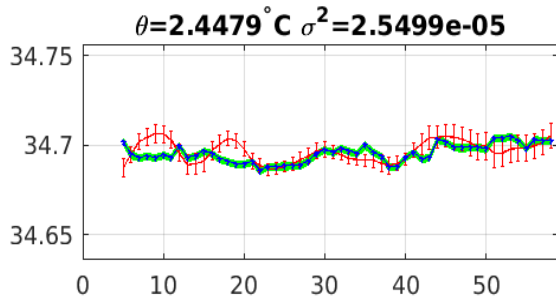
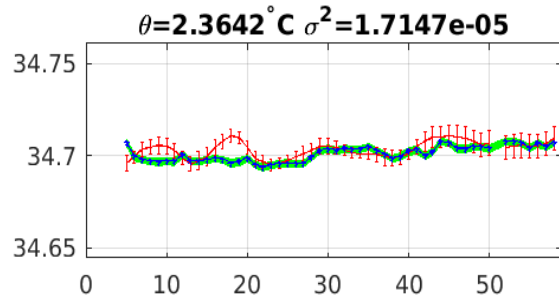
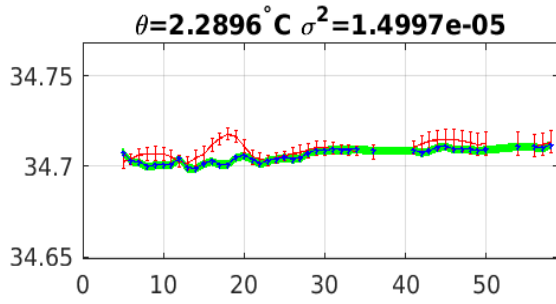
**Salinity anom on theta 3902346**



**Calibrated salinity anom on theta. 3902346**







Blue: uncal float; Red: mapped salinity; Green: cal float w/1xerr