

WMO 3902255 - OWC Summary Plots

DMQC Operator: Lola Pierson
Date: 07-Feb-2025 12:44:01
Cycles: 0 - 30
Dfiles: 0 - 19

Config File: cow_config_saf.txt
WMO Boxes: wmo_boxes_ctd24argo23.mat
Historical Argo: ARGO_for_DMQC_2023V03_1XXX.tar.gz
Historical CTD: CTD_for_DMQC_2024V01_1.tar.gz

Map Scale

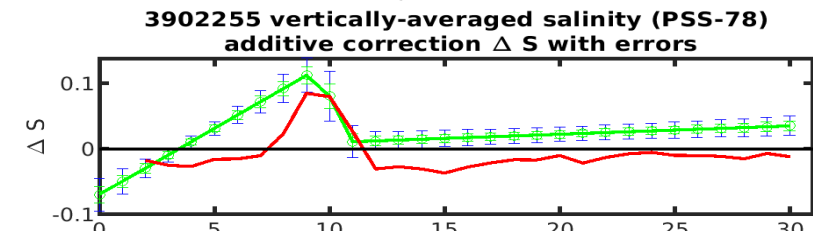
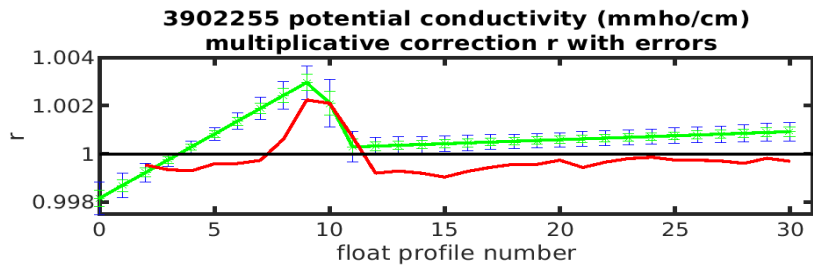
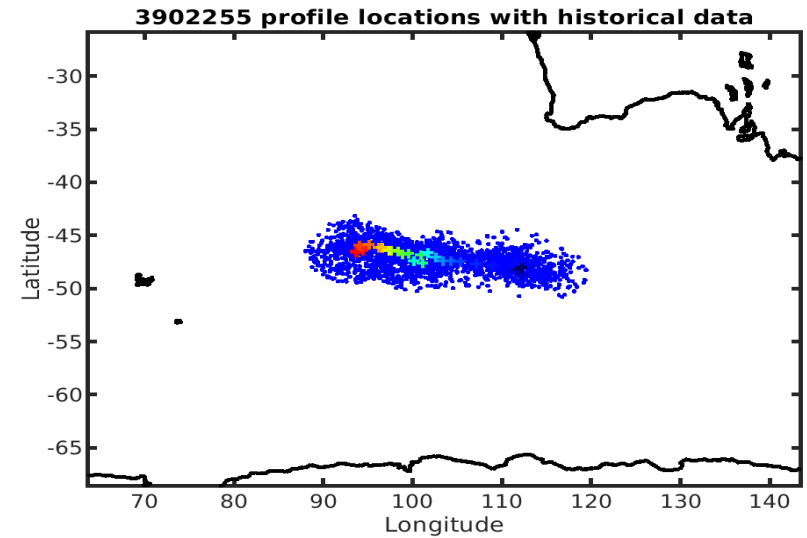
Longitude: 1° / 2°
Latitude: 0.5° / 1°
Age: 5yrs / 10yrs
PV: 0
SAF: 1

OWC Parameters

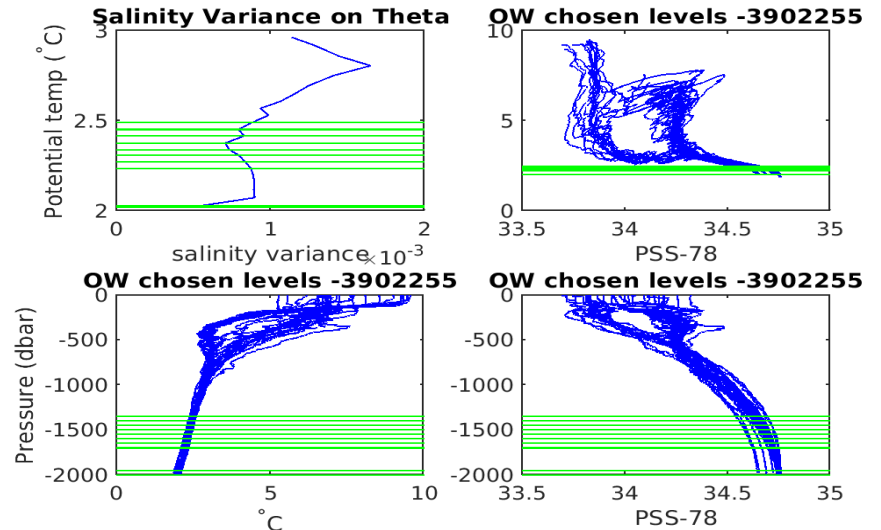
Pressure: : 800 < pres < --
Theta: -- < theta < --
Breaks: 9.41684 11.0007

Output

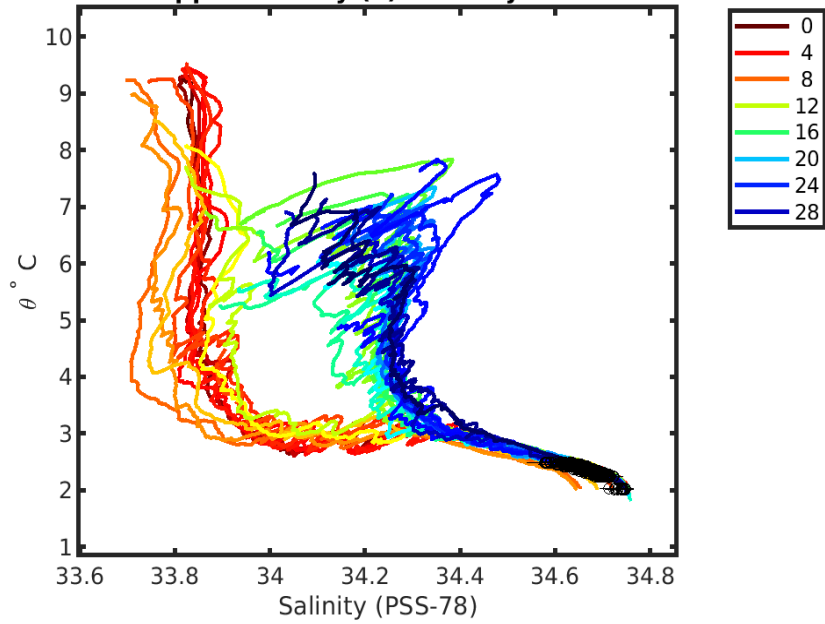
Pcond factor: [0.99815 - 1.003]
Salinity Offset: [-0.069405 - 0.1123]



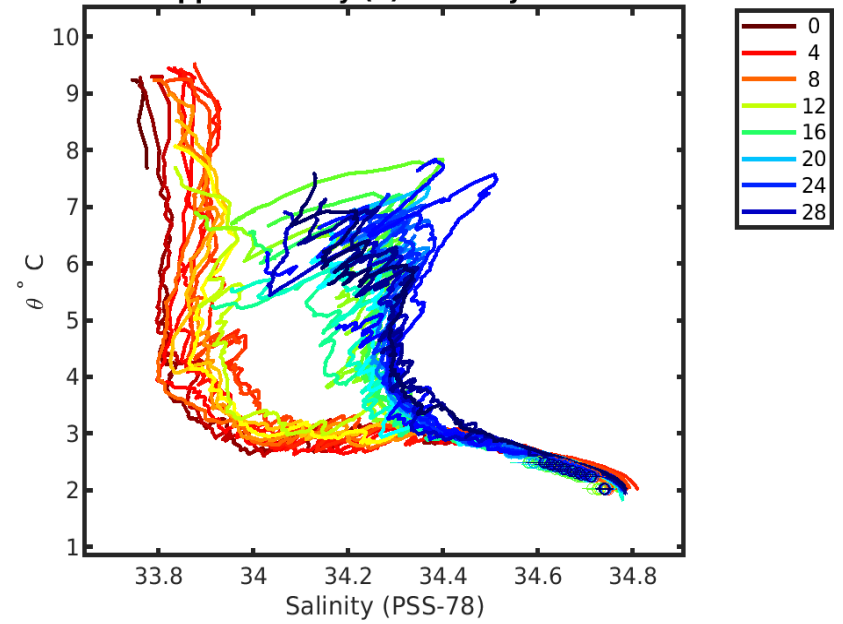
float profile number - blue: 2xcal error; green: 1xcal error; red: 1-1 profile f



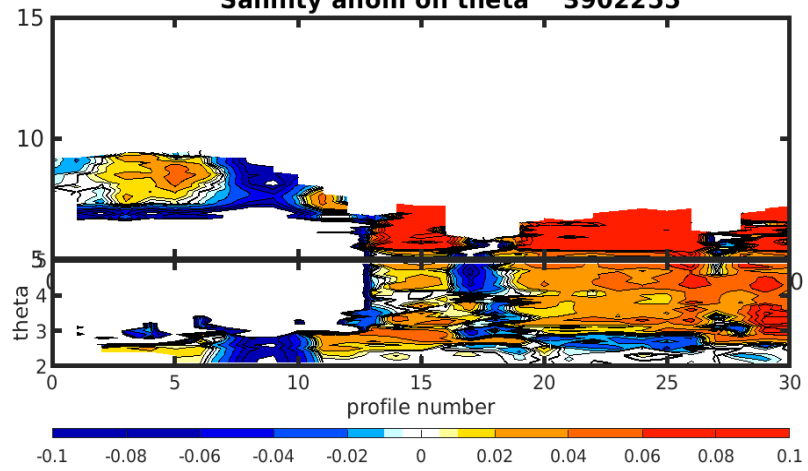
**3902255 uncalibrated float data (-)
and mapped salinity (o) with objective errors**



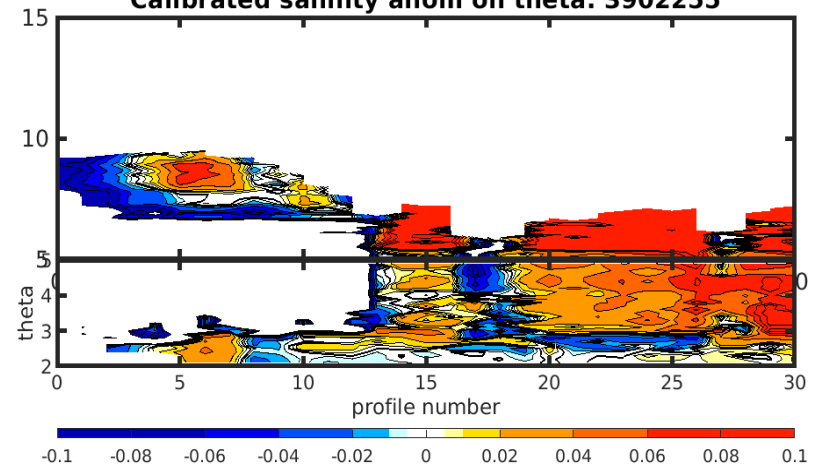
**3902255 calibrated float data (-)
and mapped salinity (o) with objective errors**

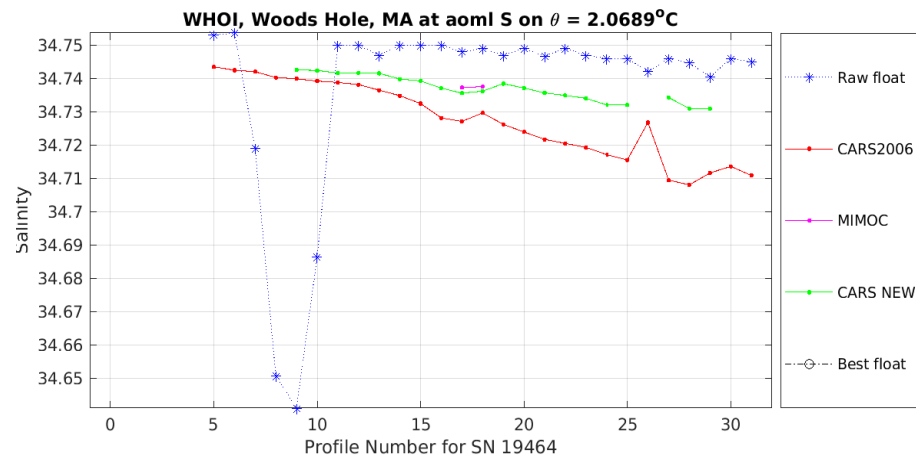
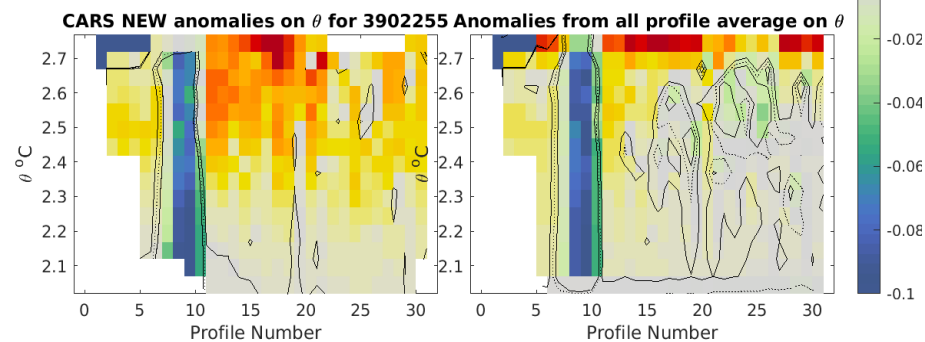
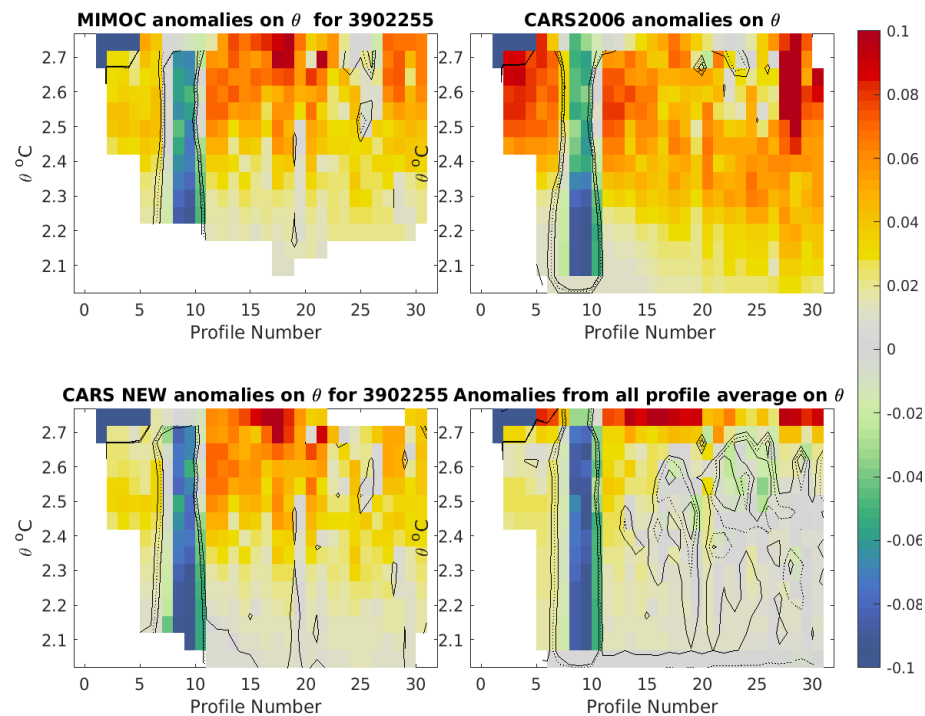
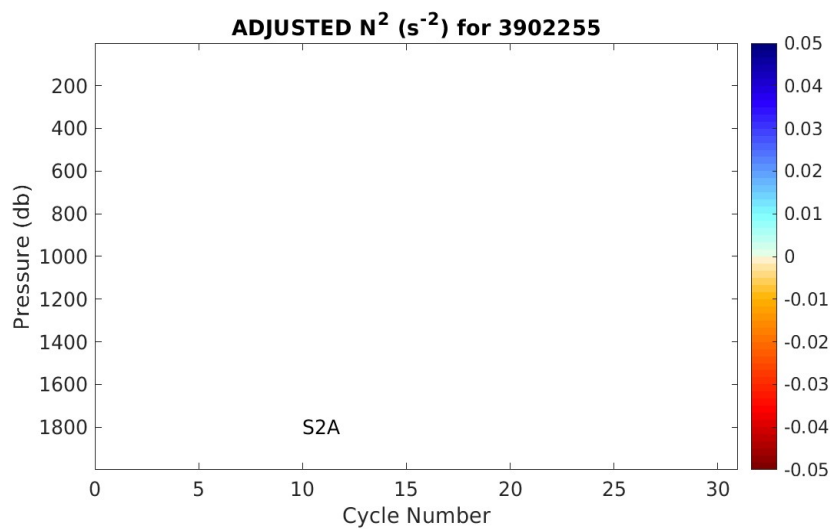
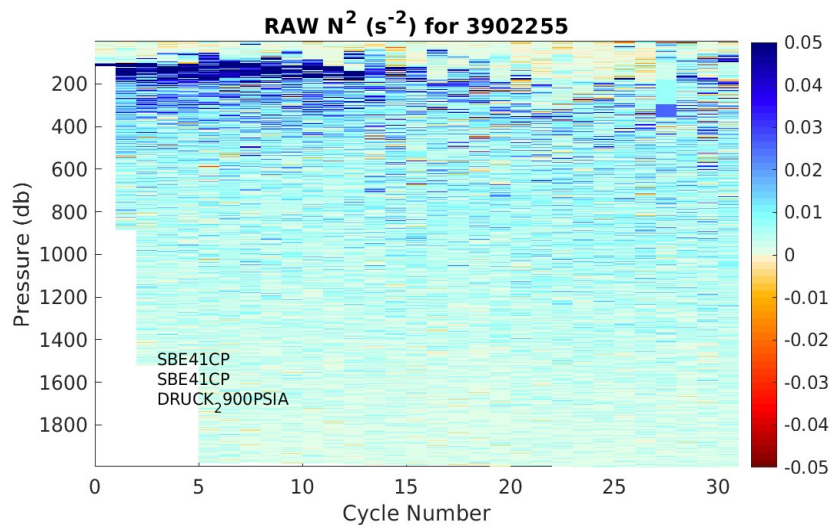


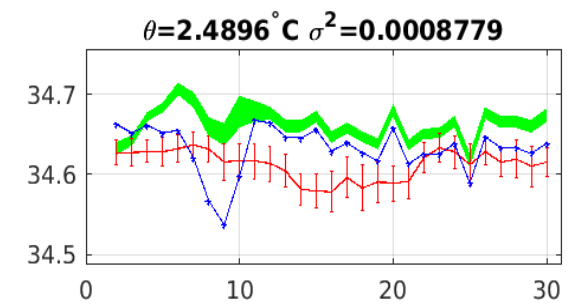
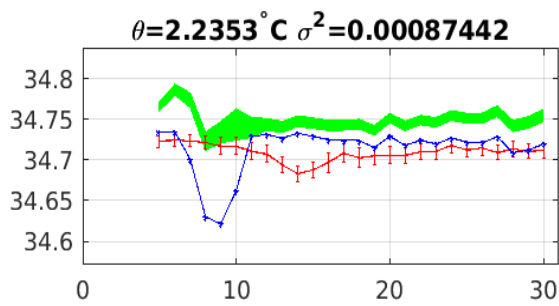
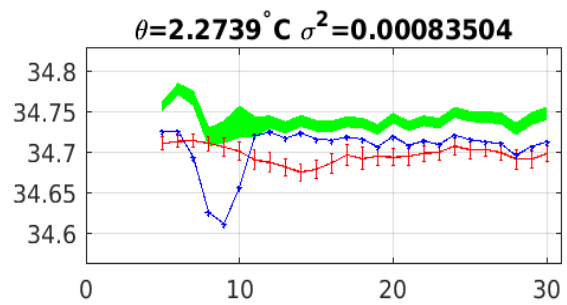
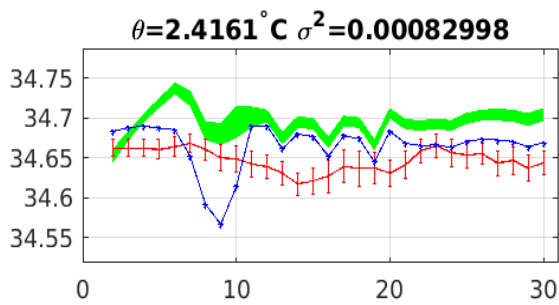
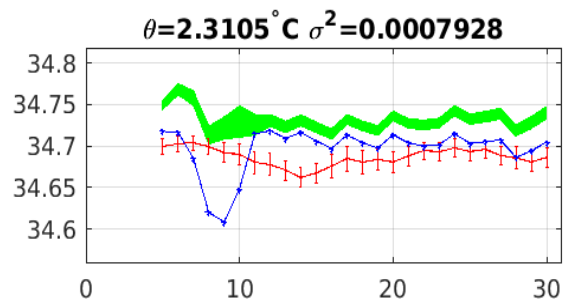
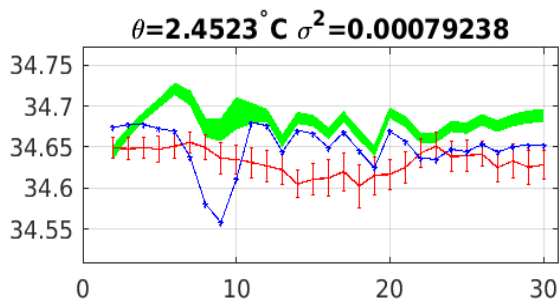
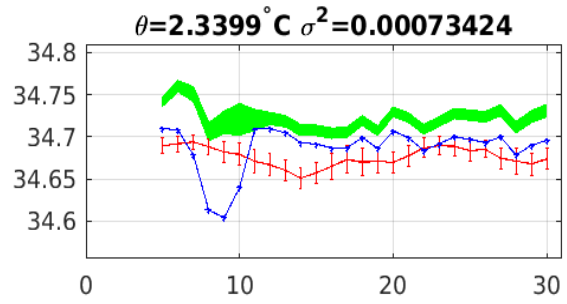
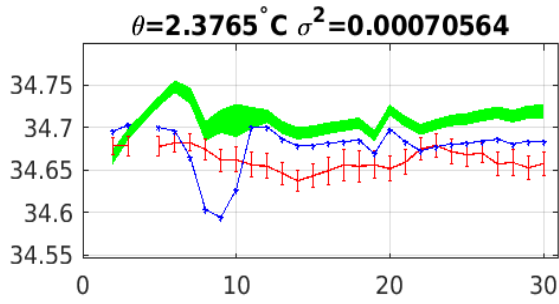
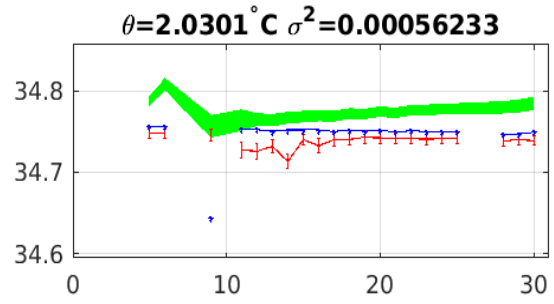
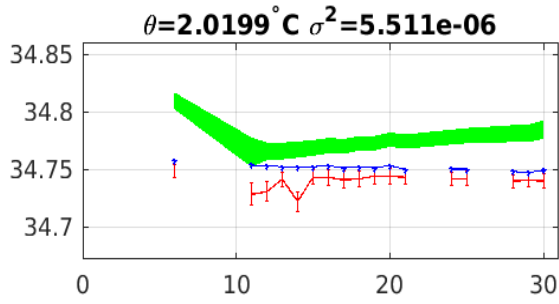
Salinity anom on theta 3902255



Calibrated salinity anom on theta. 3902255







Blue: uncal float; Red: mapped salinity; Green: cal float w/1xerr