

# WMO 3901817 - OWC Summary Plots

DMQC Operator: Sachiko Yoshida  
 Date: 18-Jan-2024 11:08:19  
 Cycles: 0 - 476  
 Dfiles: -

Config File: cow\_config\_sm.txt  
 WMO Boxes: wmo\_boxes\_ctd21argo22.mat  
 Historical Argo: ARGO\_for\_DMQC\_2022V03\_1XXX.tar.gz  
 Historical CTD: CTD\_for\_DMQC\_2021V02\_1.tgz

## Map Scale

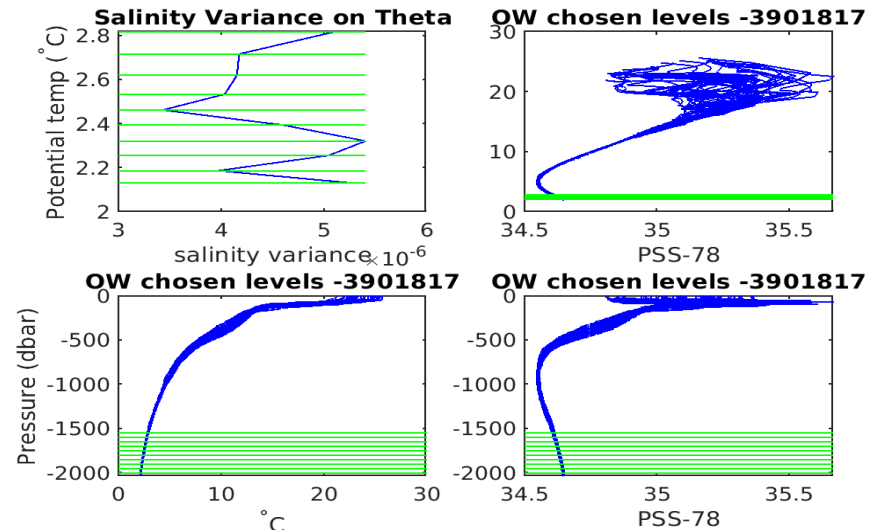
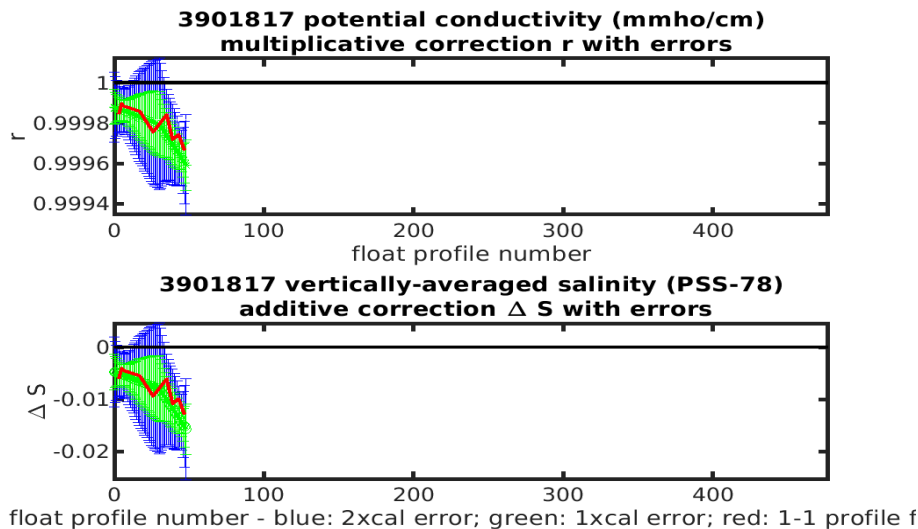
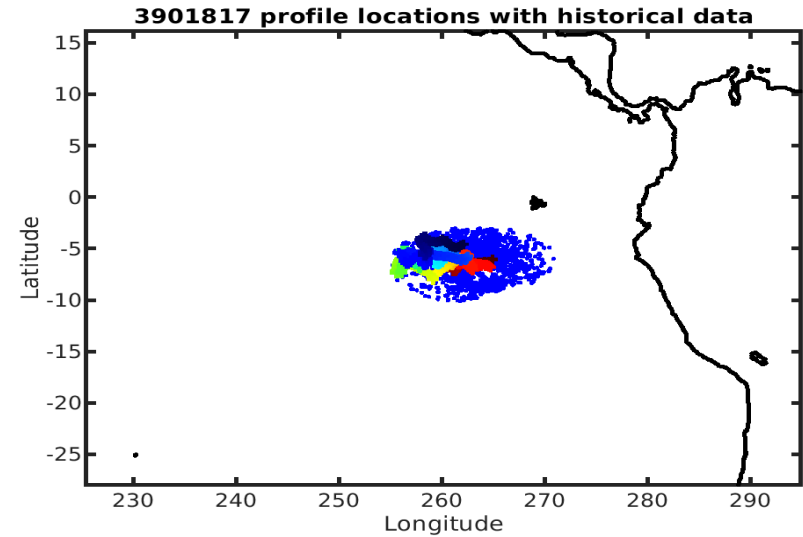
Longitude: 1° / 2°  
 Latitude: 0.5° / 1°  
 Age: 5yrs / 10yrs  
 PV: 0  
 SAF: 0

## OWC Parameters

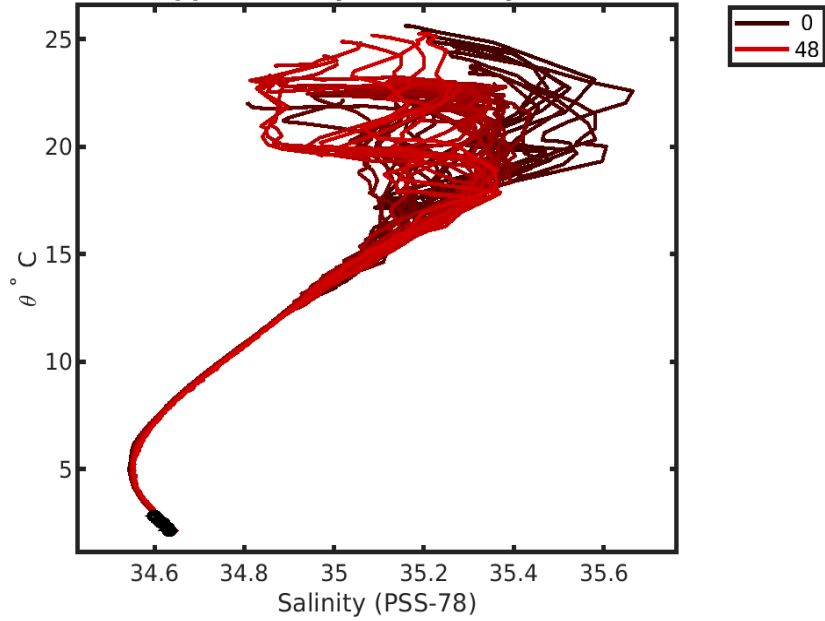
Pressure: : 1500 < pres < --  
 Theta: -- < theta < --  
 Breaks: 30.2897

## Output

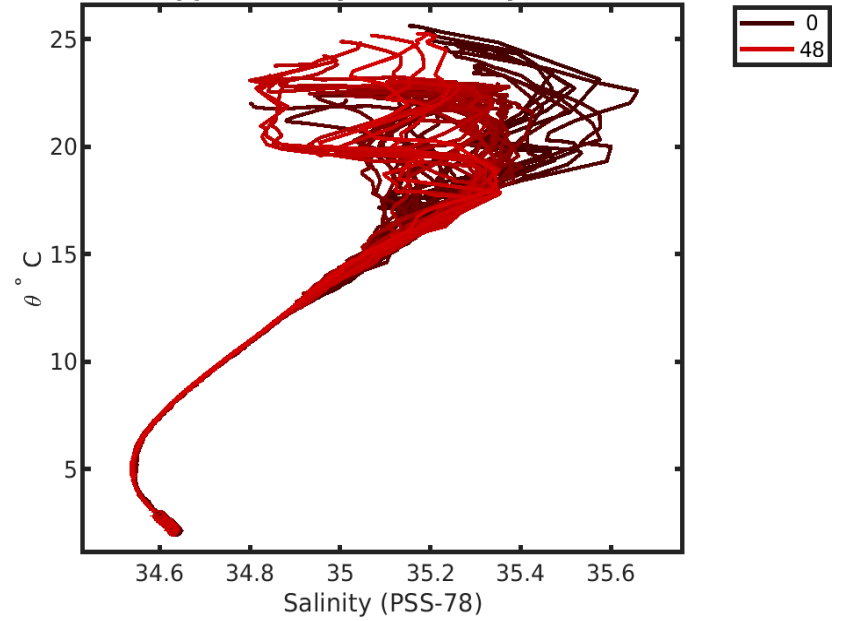
Pcond factor: [0.99959 - 0.99988]  
 Salinity Offset: [-0.015763 - -0.0047511]



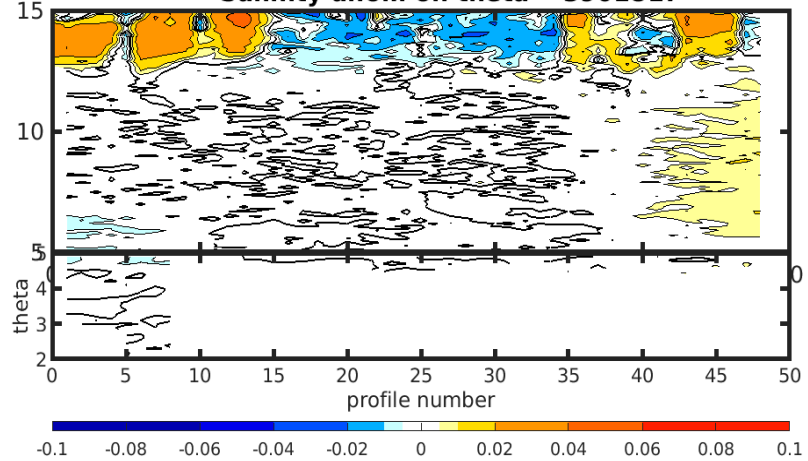
**3901817 uncalibrated float data (-)  
and mapped salinity (o) with objective errors**



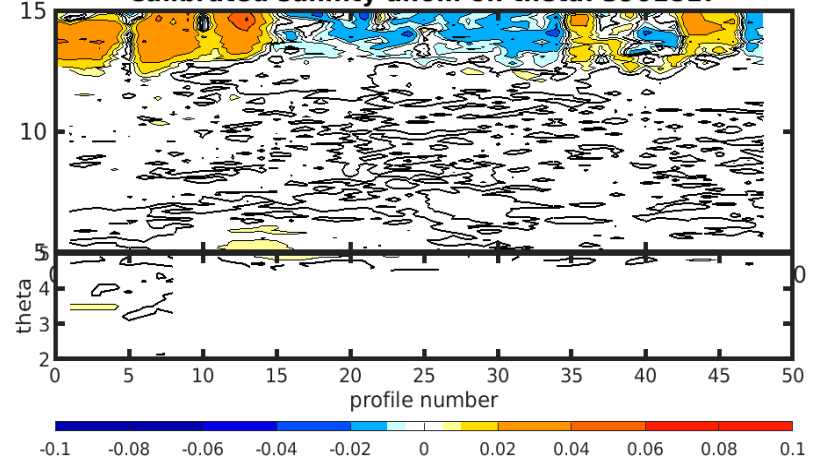
**3901817 calibrated float data (-)  
and mapped salinity (o) with objective errors**

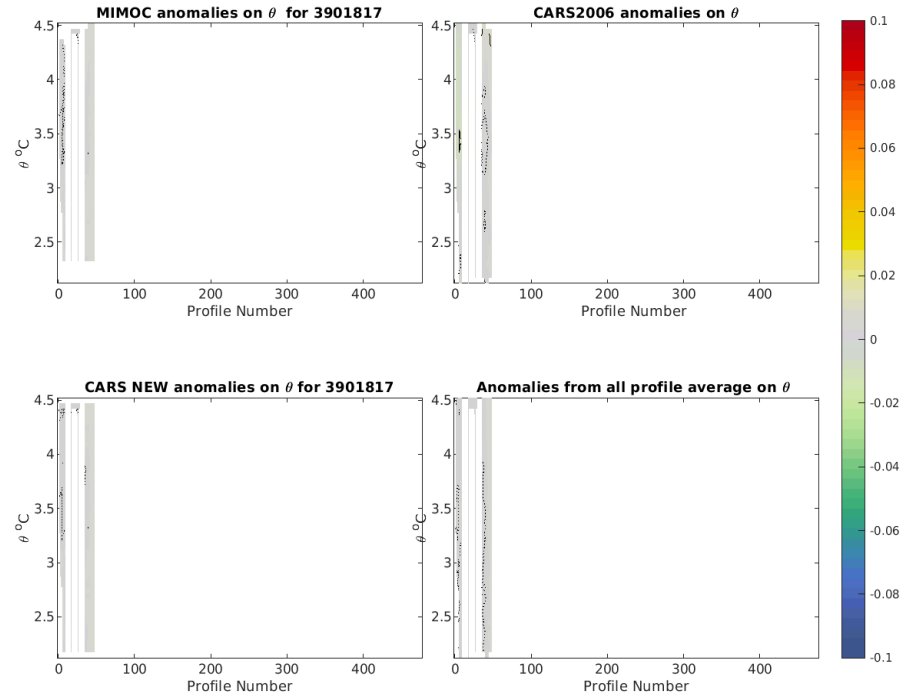
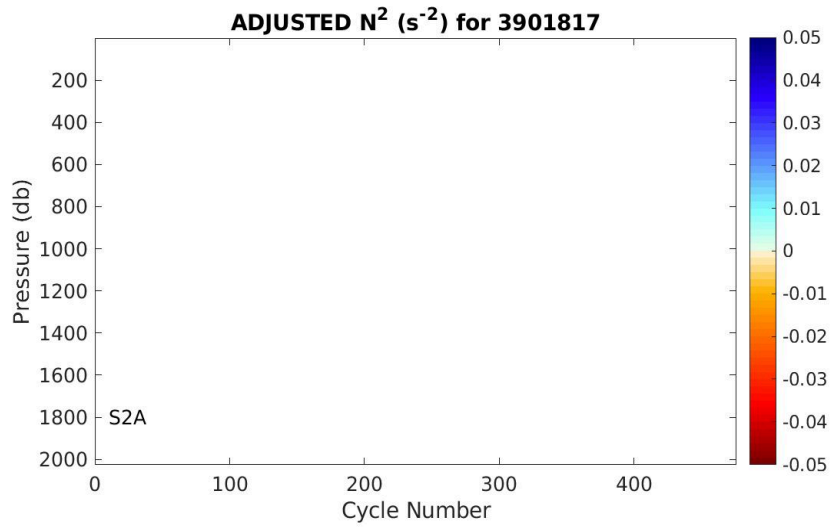
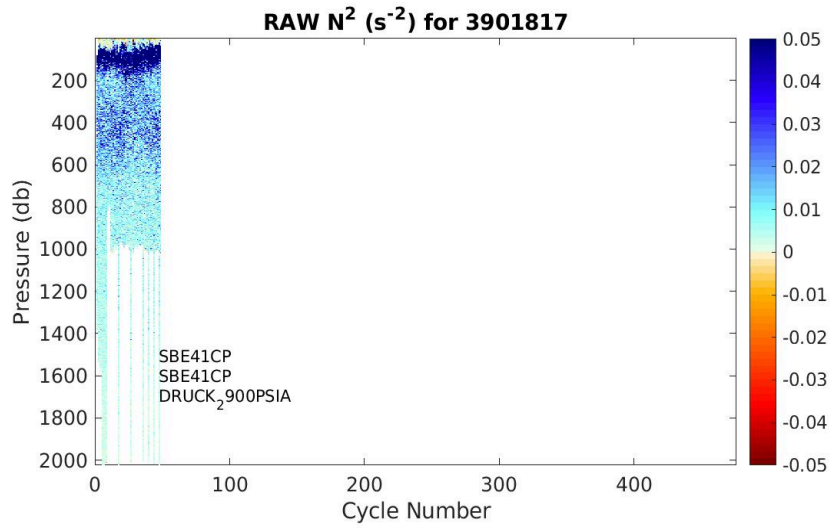


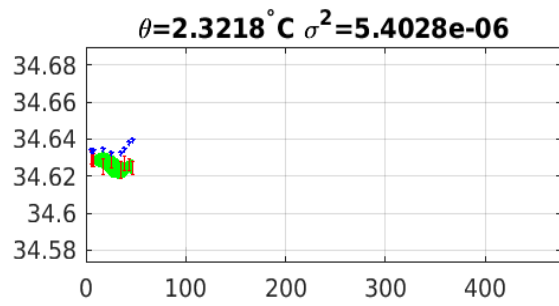
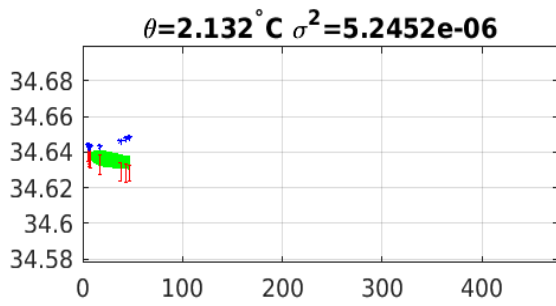
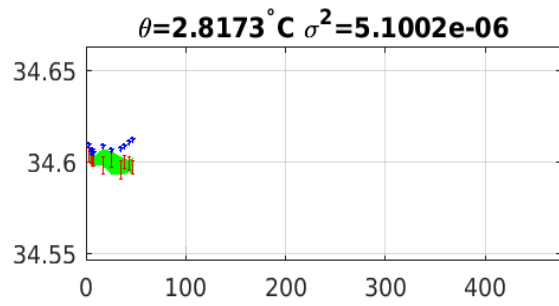
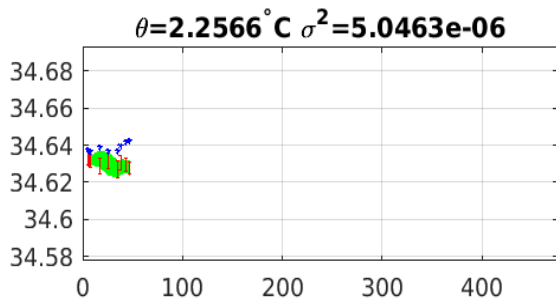
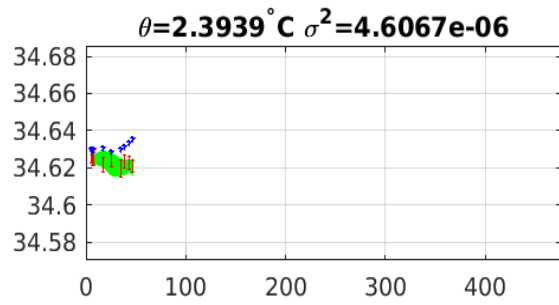
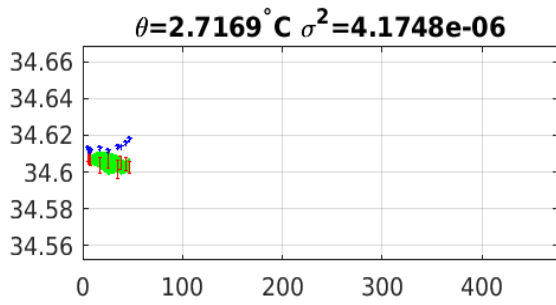
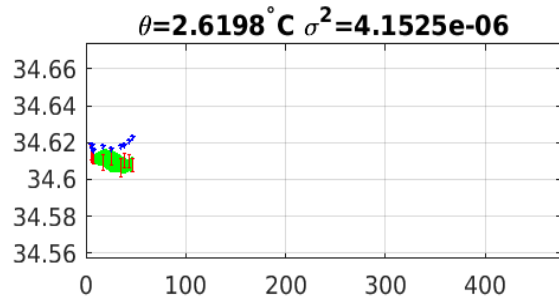
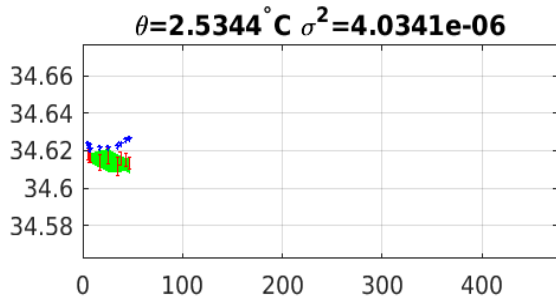
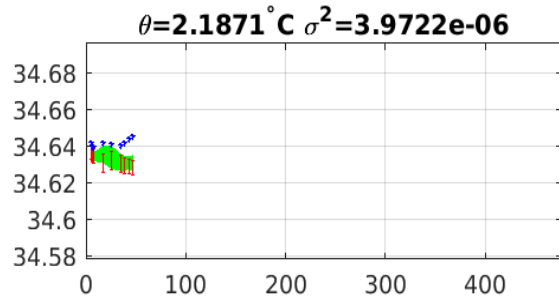
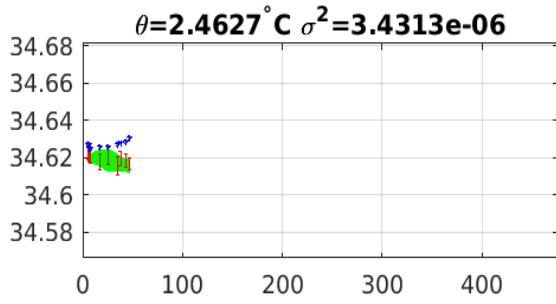
**Salinity anom on theta 3901817**



**Calibrated salinity anom on theta. 3901817**







Blue: uncal float; Red: mapped salinity; Green: cal float w/1xerr