

WMO 3901810 - OWC Summary Plots

DMQC Operator: Sachiko Yoshida
 Date: 05-Oct-2023 11:42:01
 Cycles: 0 - 255
 Dfiles: 0 - 186

Config File: cow_config_sm.txt
 WMO Boxes: wmo_boxes_ctd21argo22.mat
 Historical Argo: ARGO_for_DMQC_2022V03_1XXX.tar.gz
 Historical CTD: CTD_for_DMQC_2021V02_1.tgz

Map Scale

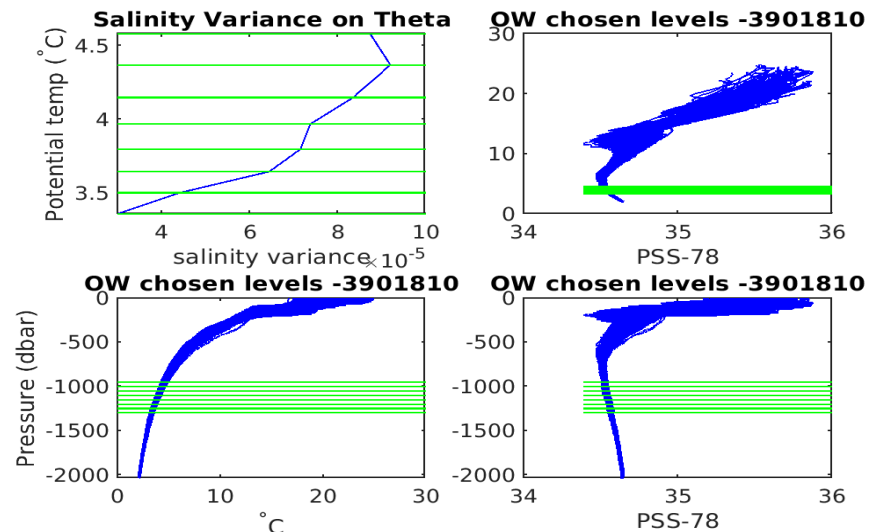
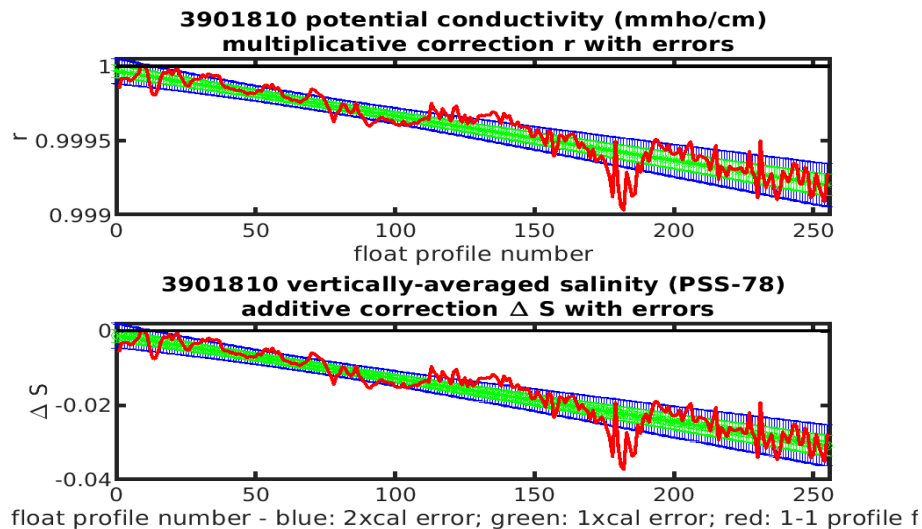
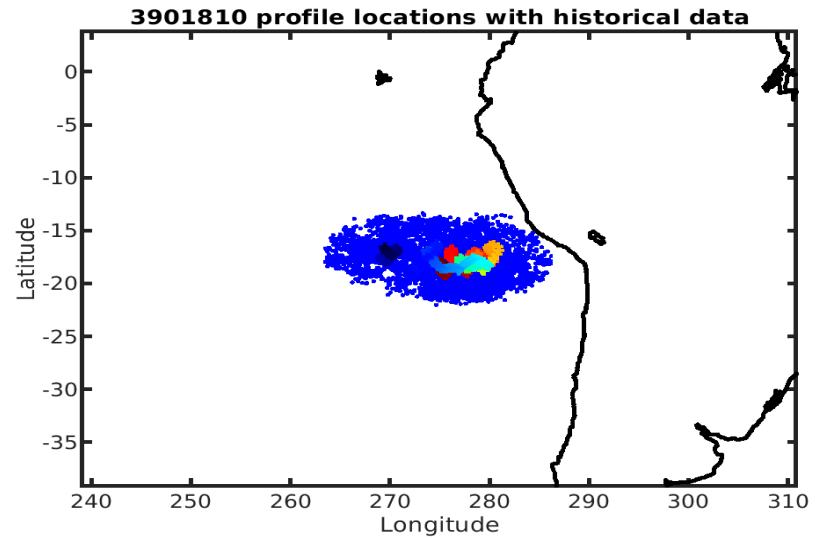
Longitude: 1° / 2°
 Latitude: 0.5° / 1°
 Age: 5yrs / 10yrs
 PV: 0
 SAF: 0

OWC Parameters

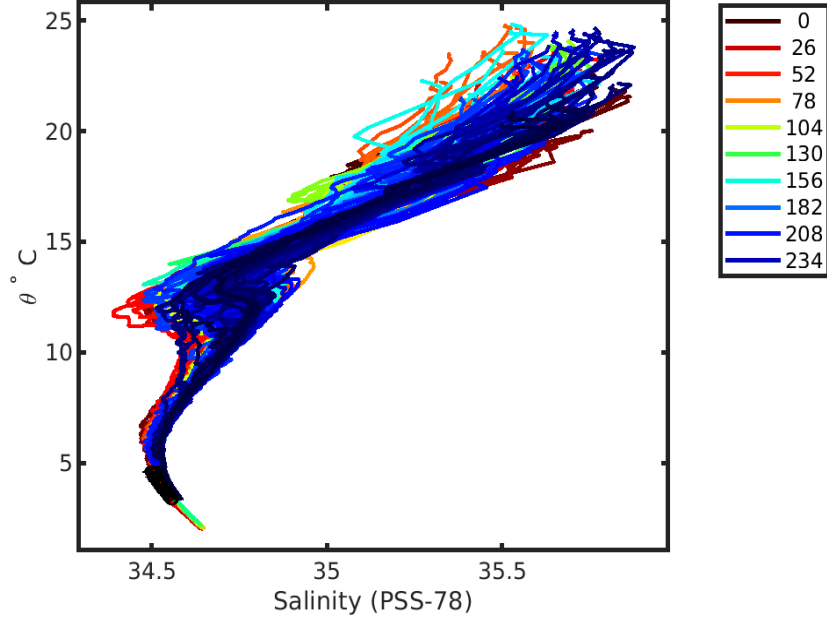
Pressure: : 900 < pres < --
 Theta: -- < theta < --
 Breaks: --

Output

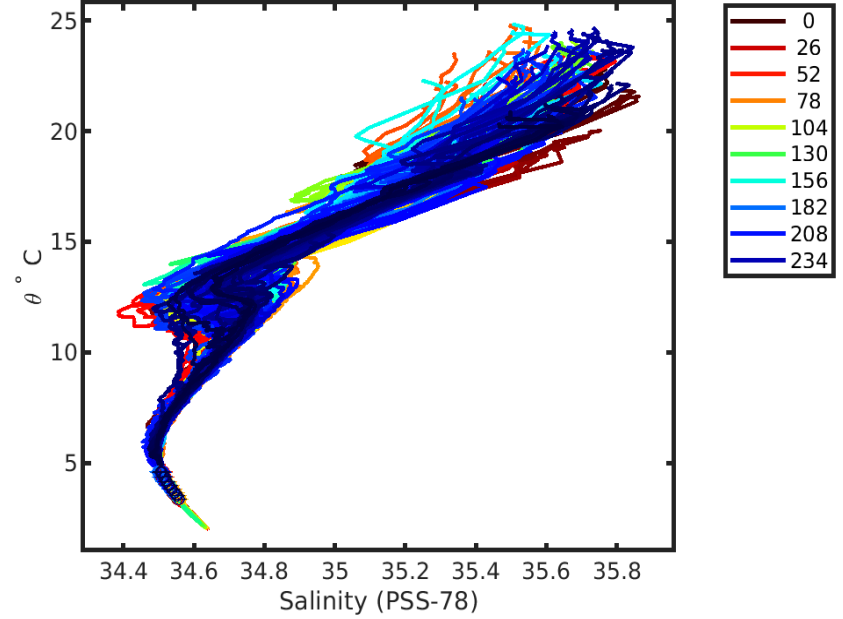
Pcond factor: [0.9992 - 0.99997]
 Salinity Offset: [-0.030806 - -0.0012719]



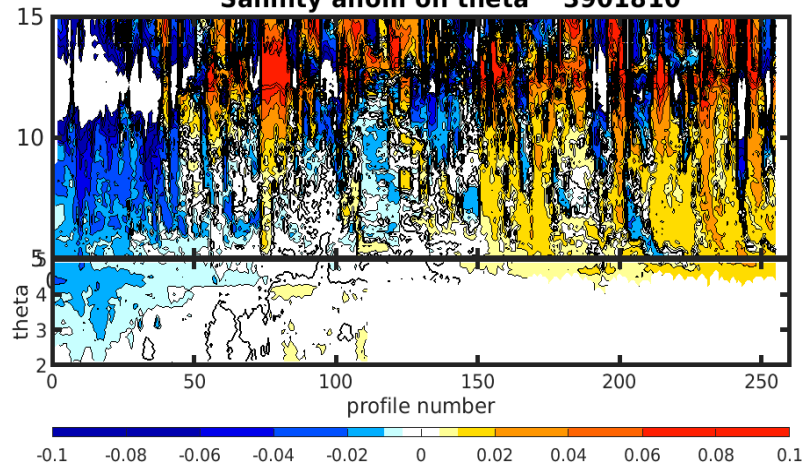
**3901810 uncalibrated float data (-)
and mapped salinity (o) with objective errors**



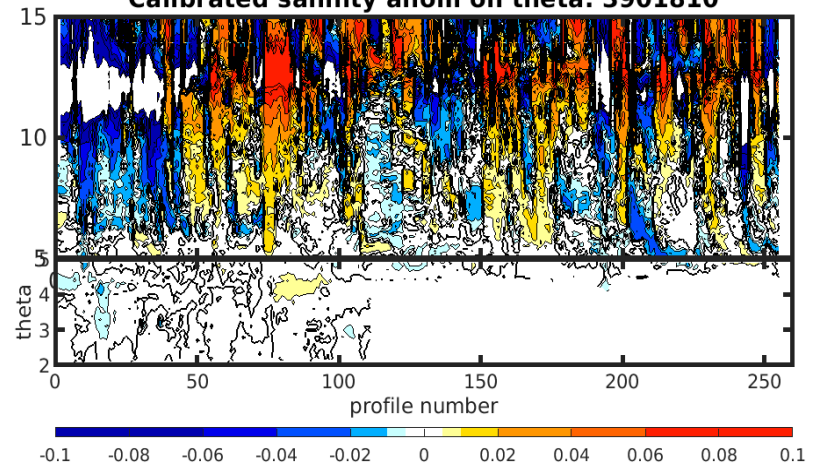
**3901810 calibrated float data (-)
and mapped salinity (o) with objective errors**

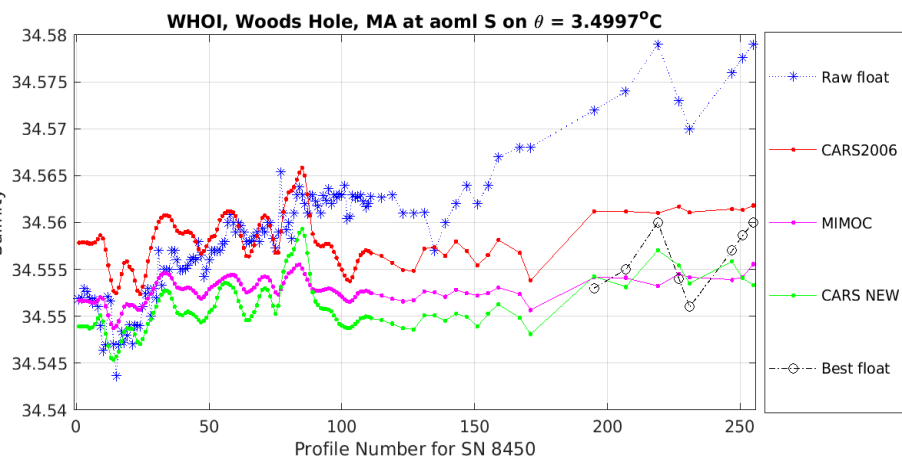
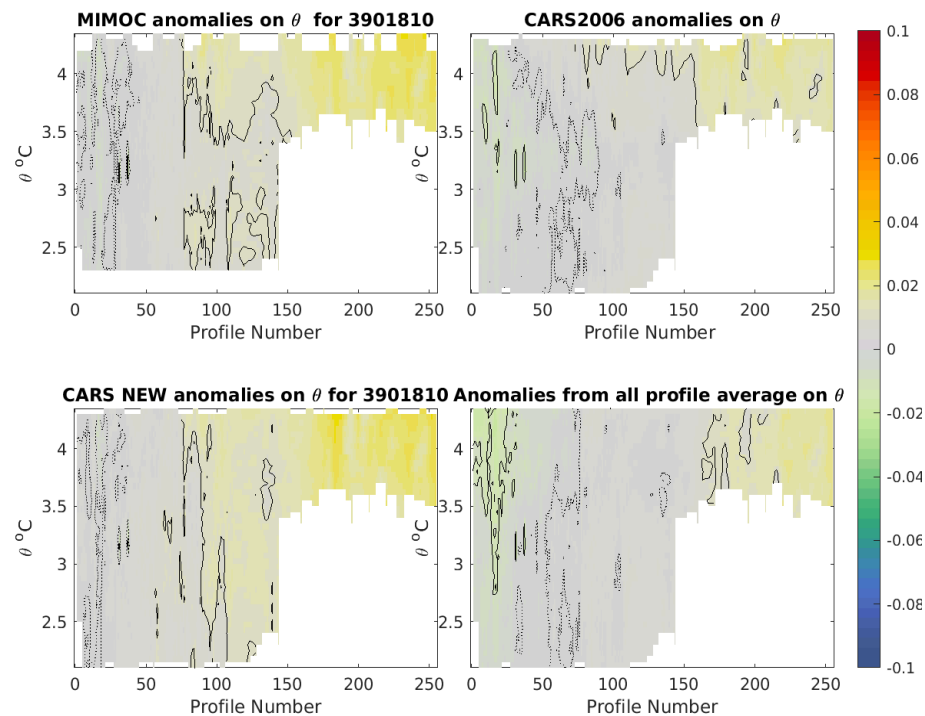
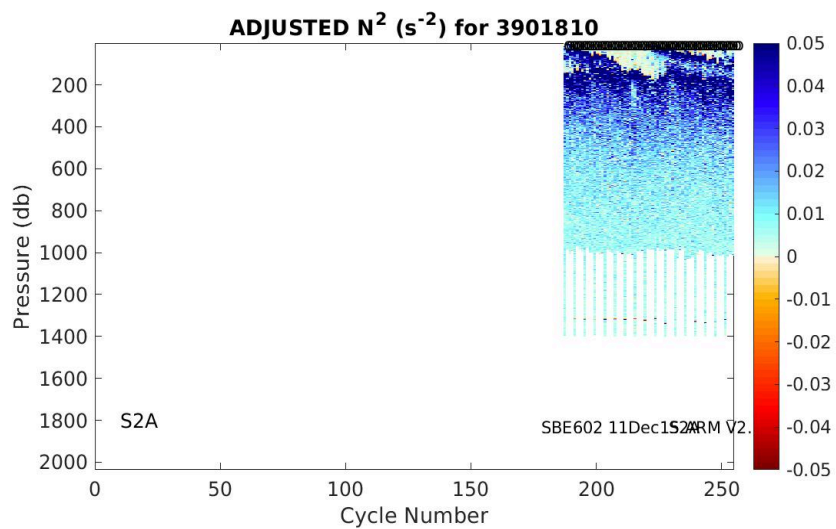
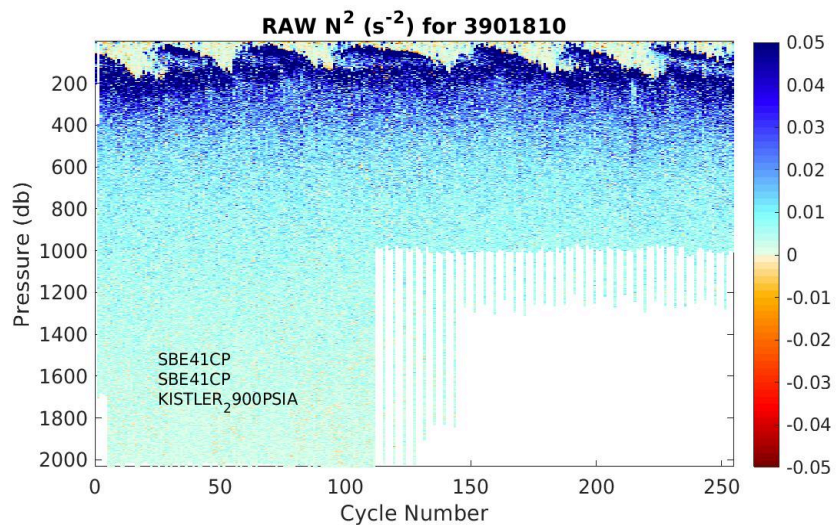


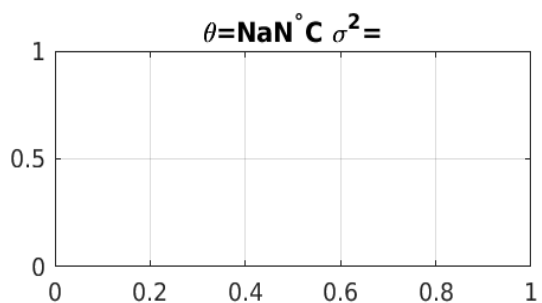
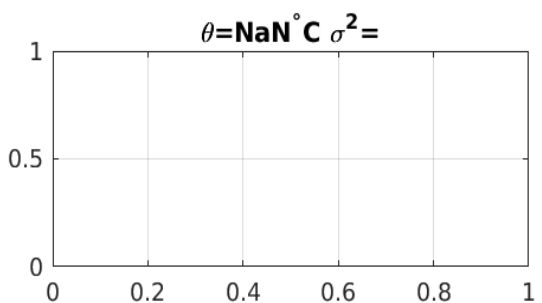
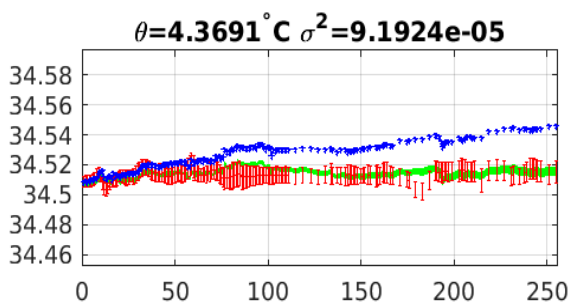
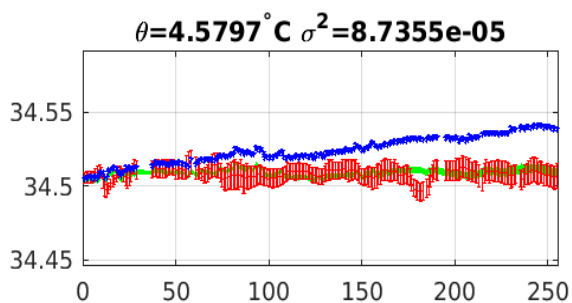
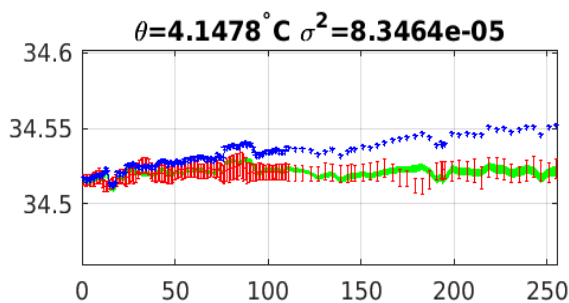
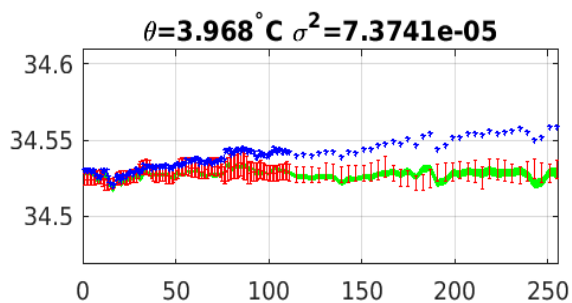
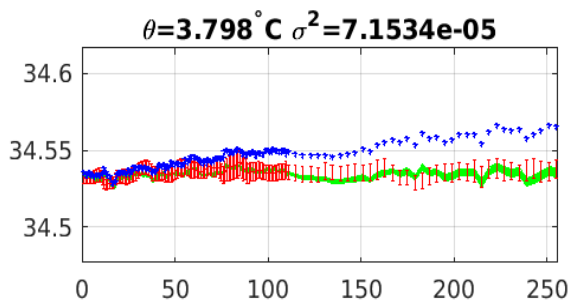
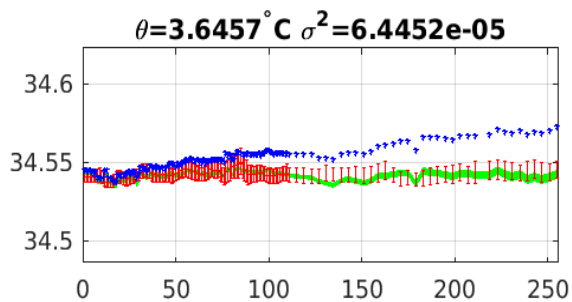
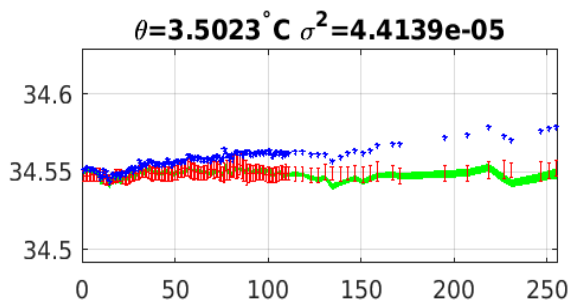
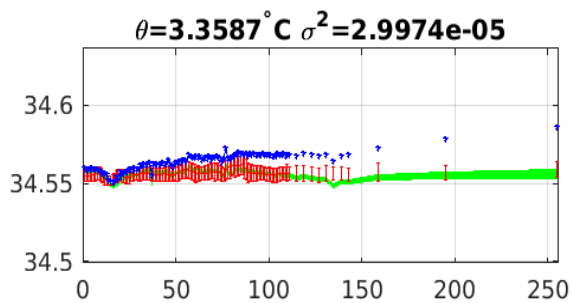
Salinity anom on theta 3901810



Calibrated salinity anom on theta. 3901810







Blue: uncal float; Red: mapped salinity; Green: cal float w/1xerr