

# WMO 3901809 - OWC Summary Plots

DMQC Operator: Deb West-Mack  
 Date: 22-Jun-2021 13:04:17  
 Config File: cow\_config\_sm.txt

WMO Boxes: wmo\_boxes\_ctd21argo20.mat  
 Historical Argo: ARGO\_for\_DMQC\_2020V03.tar.gz  
 Historical CTD: CTD\_for\_DMQC\_2021V01\_1.tar.gz

## Map Scale

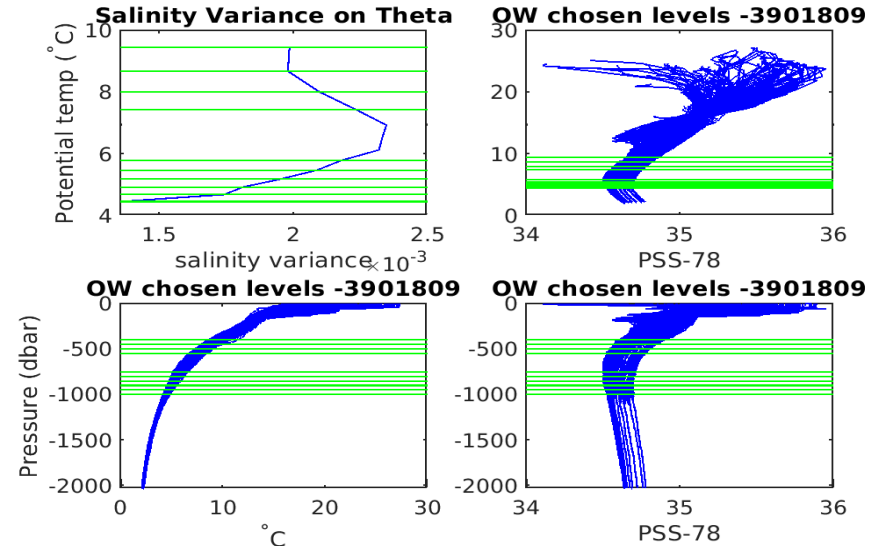
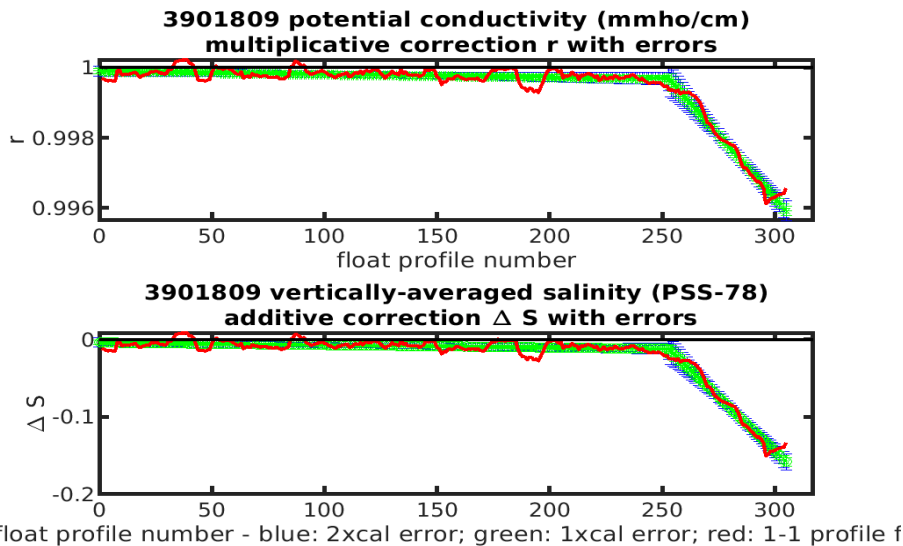
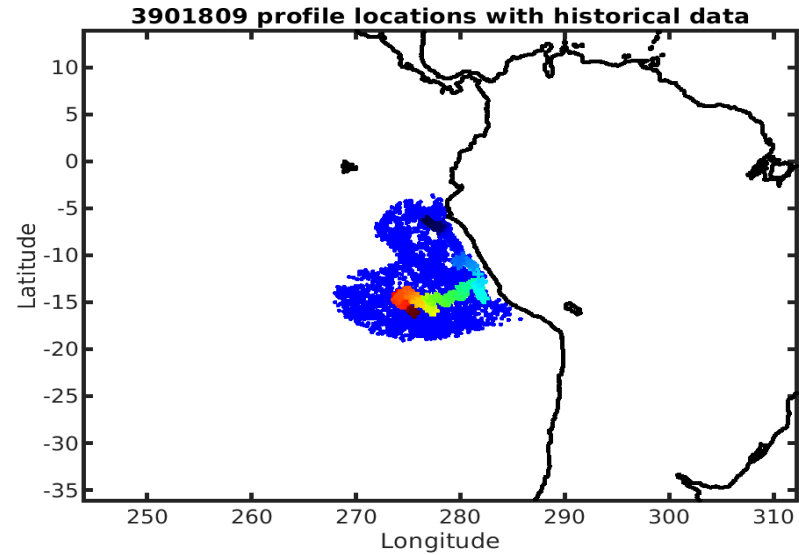
Longitude: 1° / 2°  
 Latitude: 0.5° / 1°  
 Age: 5yrs / 10yrs  
 PV: 0  
 SAF: 0

## OWC Parameters

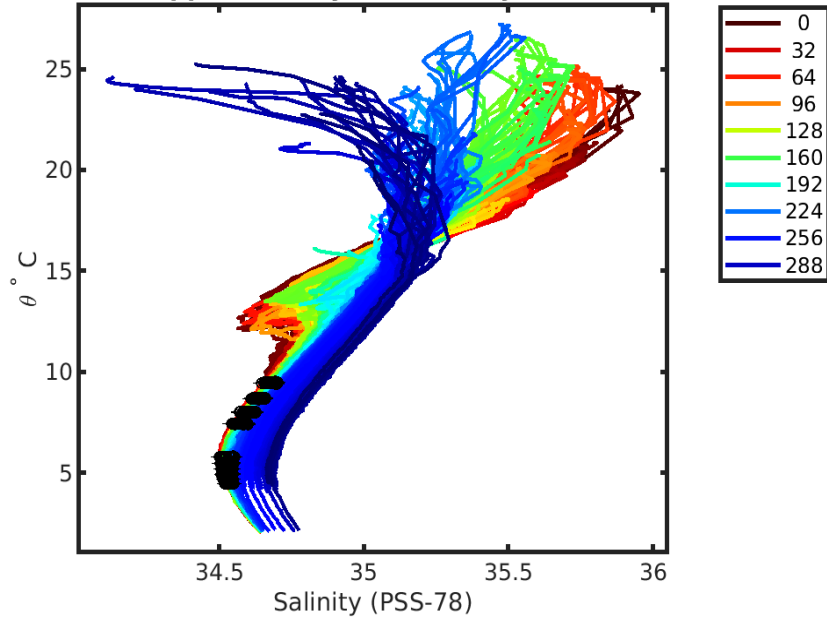
Pressure: : -- < pres < --  
 Theta: -- < theta < --  
 Breaks: 252.7326

## Output

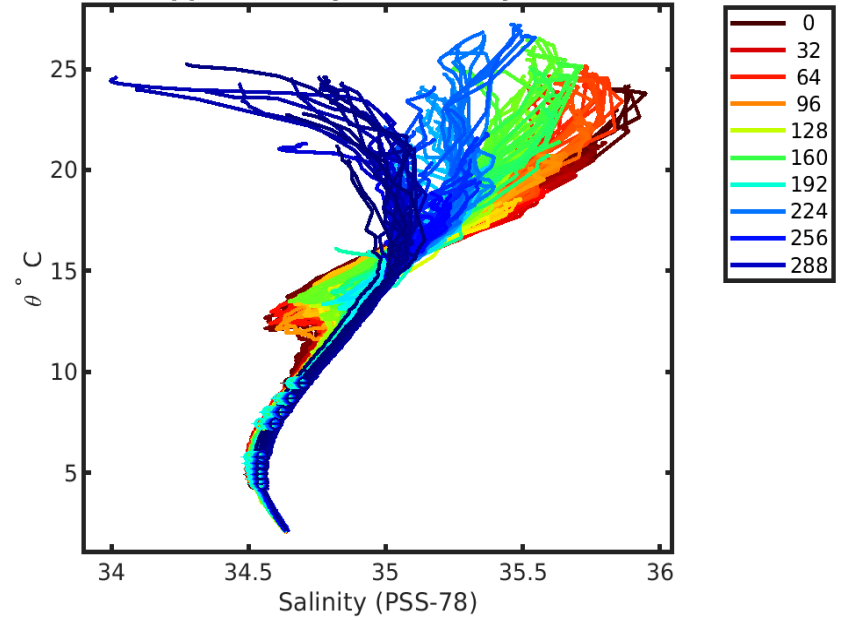
Pcond factor: [0.99592 - 0.9999]  
 Salinity Offset: [-0.15813 - -0.003968]



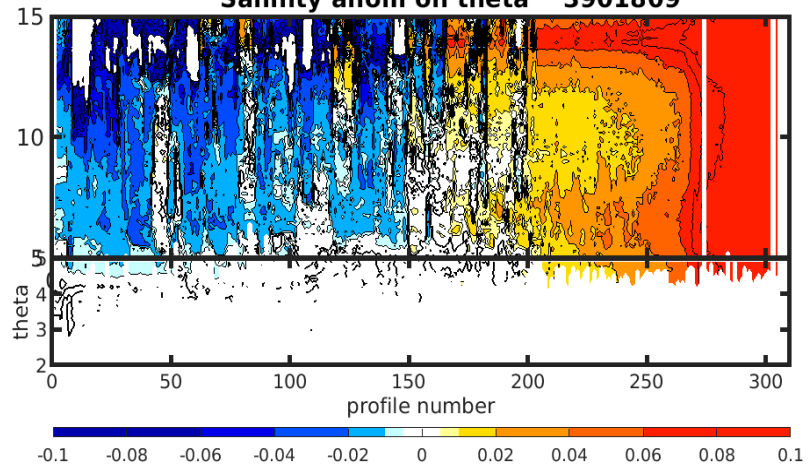
**3901809 uncalibrated float data (-)  
and mapped salinity (o) with objective errors**



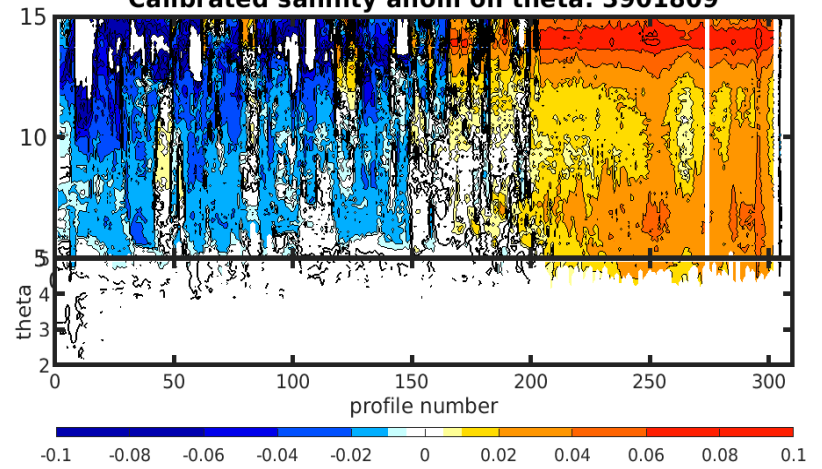
**3901809 calibrated float data (-)  
and mapped salinity (o) with objective errors**

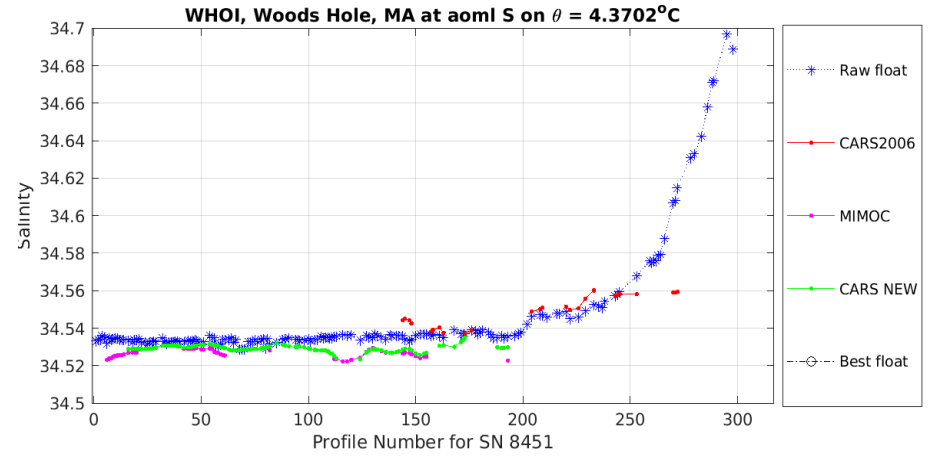
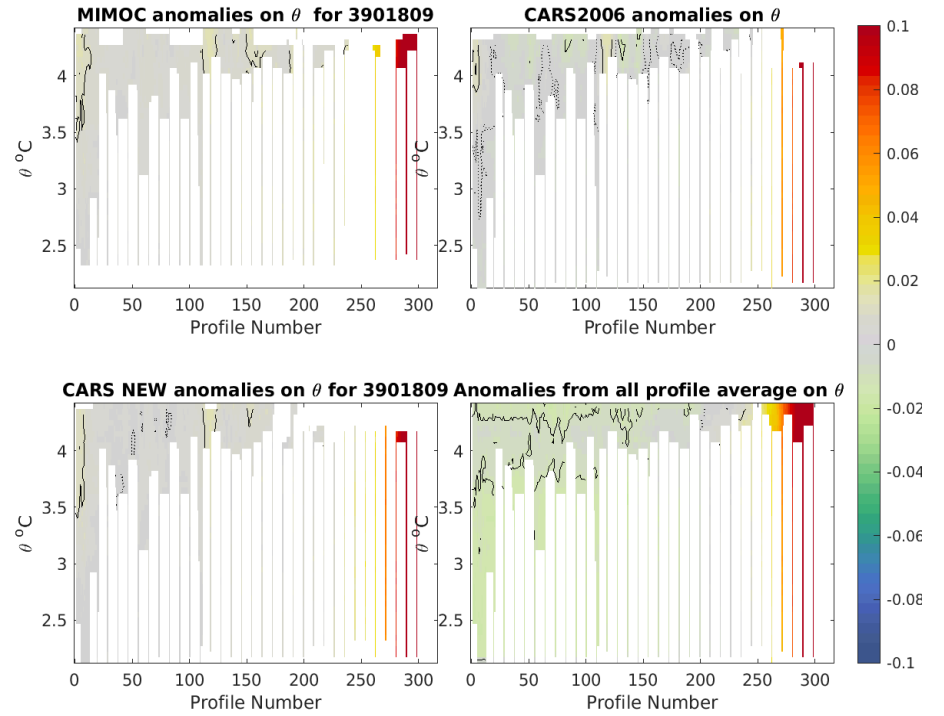
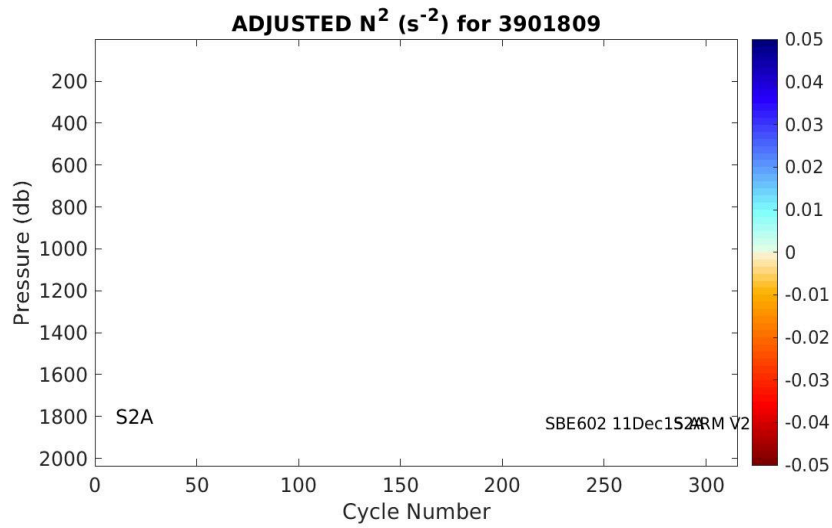
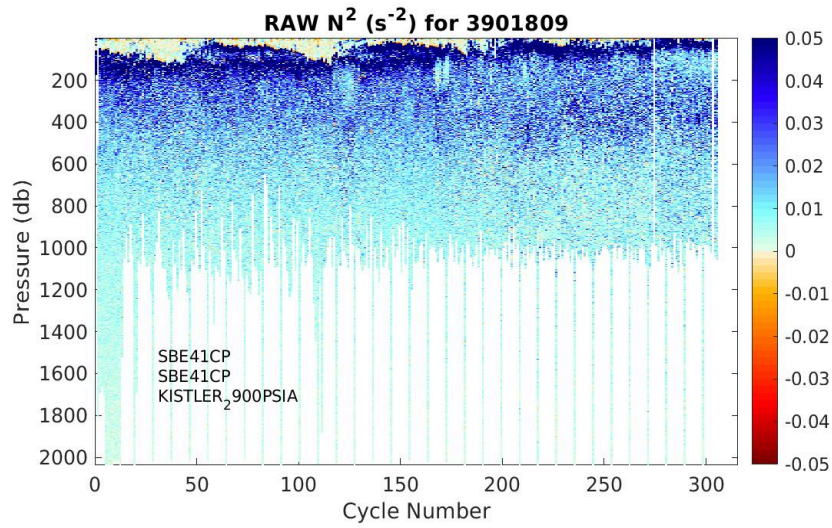


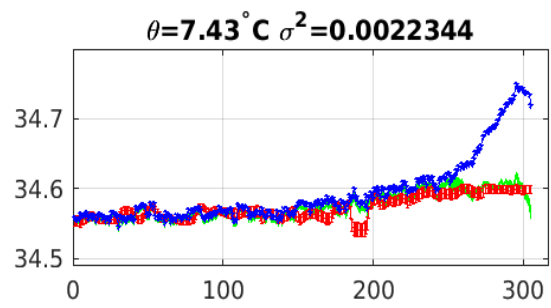
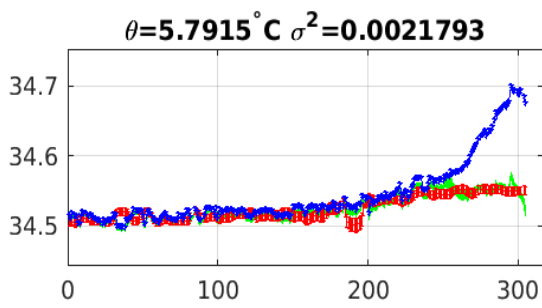
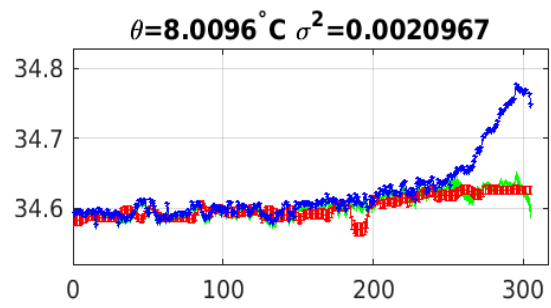
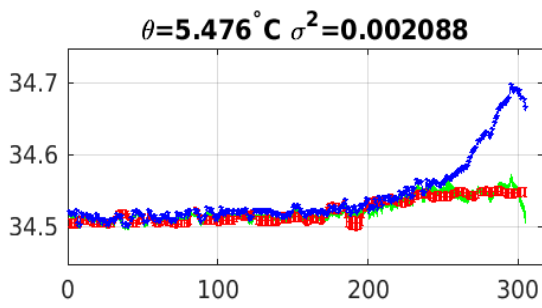
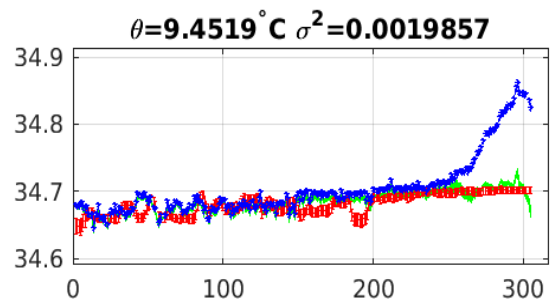
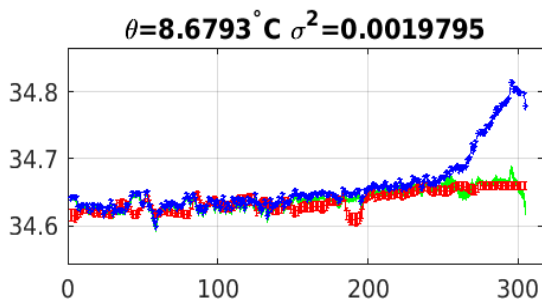
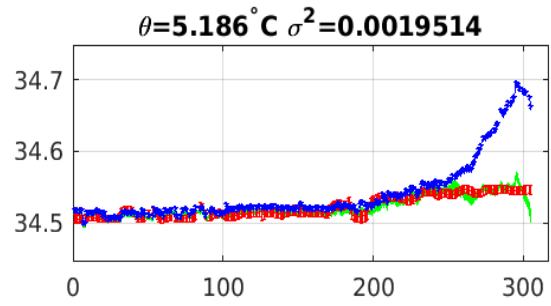
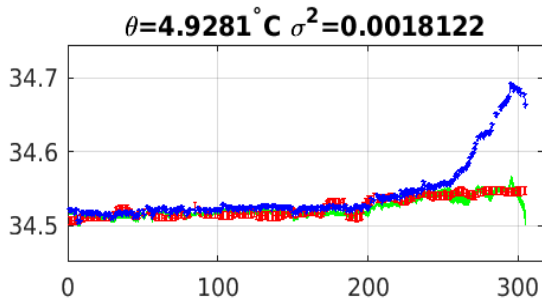
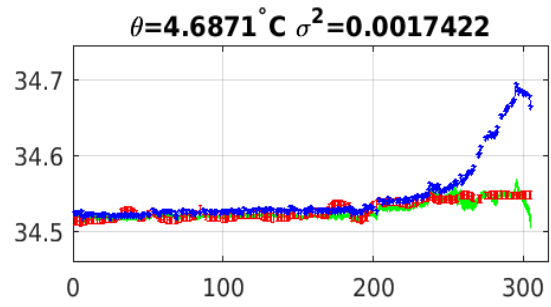
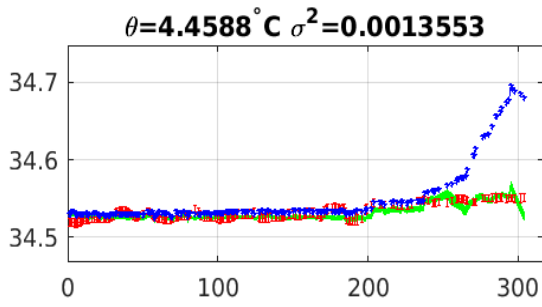
**Salinity anom on theta 3901809**



**Calibrated salinity anom on theta. 3901809**







Blue: uncal float; Red: mapped salinity; Green: cal float w/1xerr