

## WMO3900718 - OWC Summary Plots

DMQC Operator: Unknown  
 Date: 08-Jun-2020 11:36:20  
 Config File: cow\_config.txt

### Map Scale

Longitude: 2° / 4°  
 Latitude: 1° / 2°  
 Age: 5yrs / 10yrs  
 PV: 0

SAF: 0

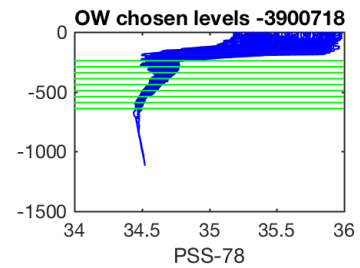
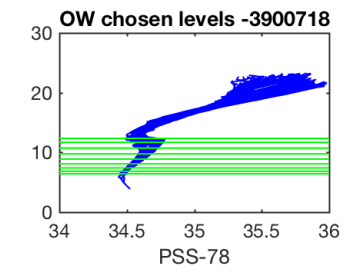
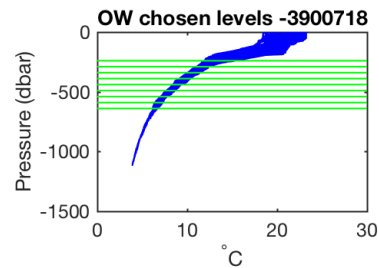
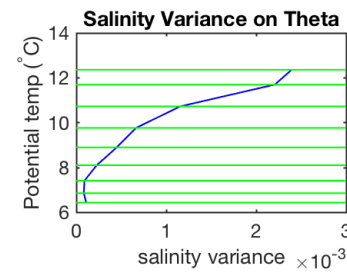
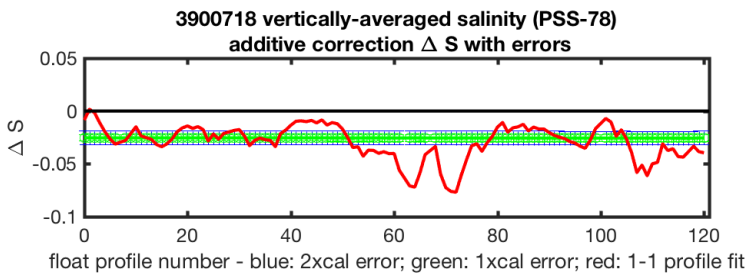
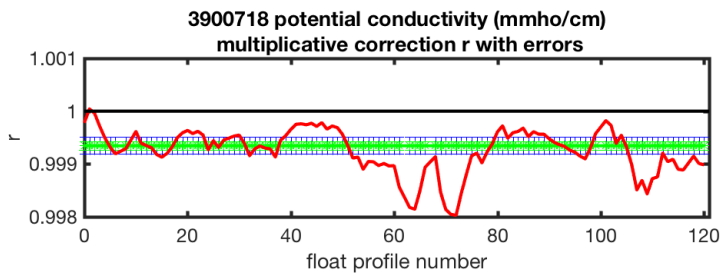
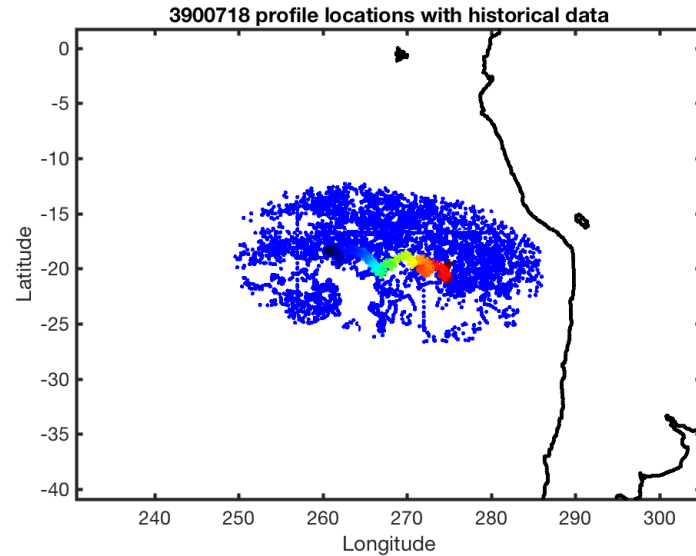
### Output

Pcond factor: 0.99934  
 Salinity Offset: [-0.025662 - -0.02  
 533]

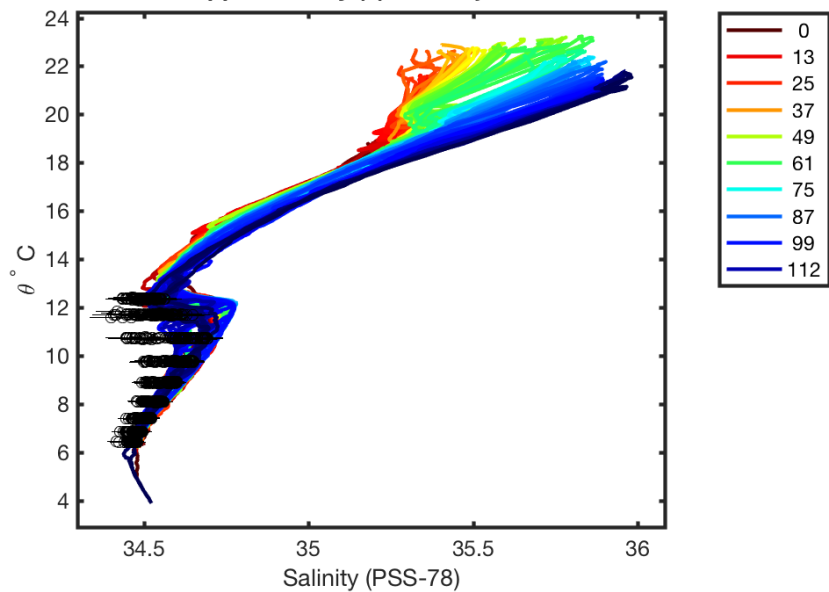
### OWC Parameters

Pressure: : -- < pres < --  
 Theta: -- < theta < 13  
 Breaks: --

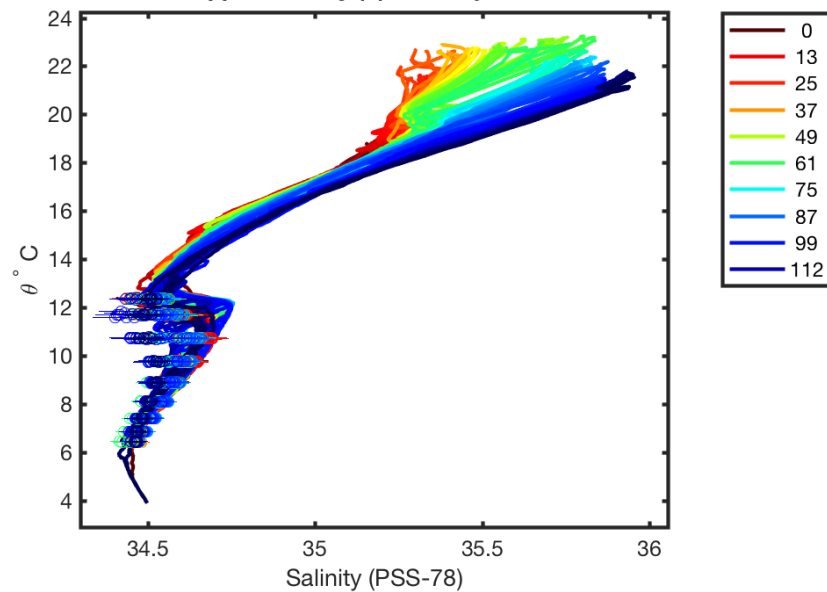
WMO Boxes: wmo\_boxes\_argo19ctd19.mat  
 Historical Argo: ARGO\_for\_DMQC\_2018V01.tar.gz  
 Historical CTD: CTD\_for\_DMQC\_2019V01\_1.tar.gz



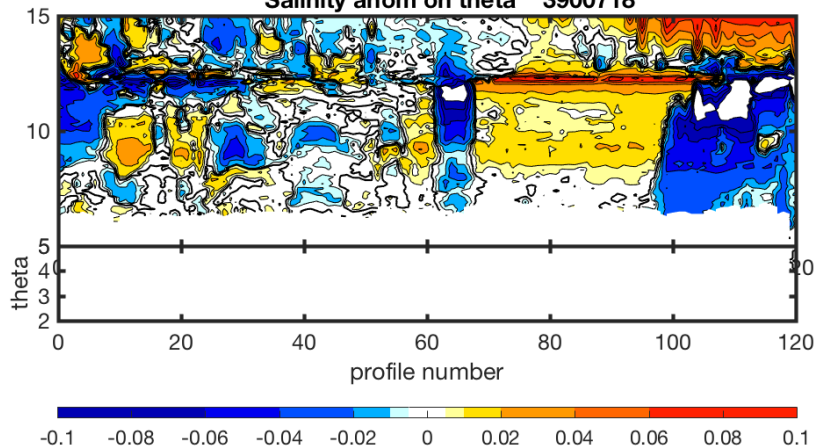
3900718 uncalibrated float data (-)  
and mapped salinity (o) with objective errors



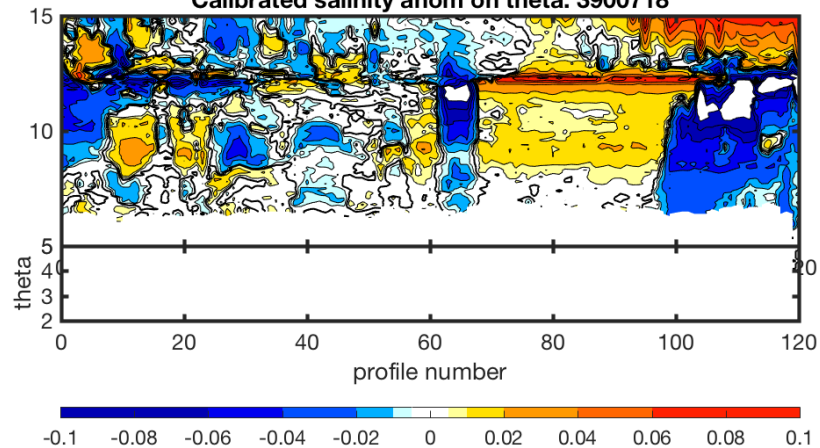
3900718 calibrated float data (-)  
and mapped salinity (o) with objective errors

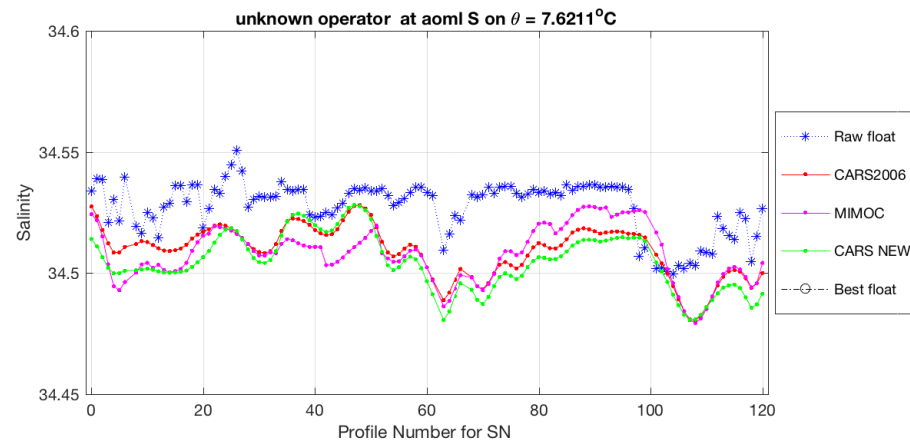
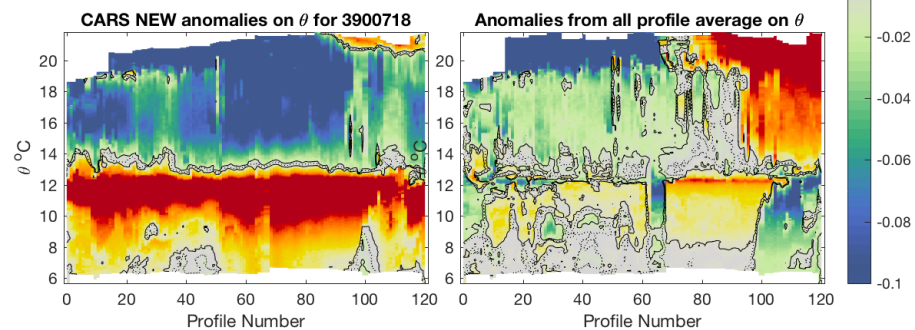
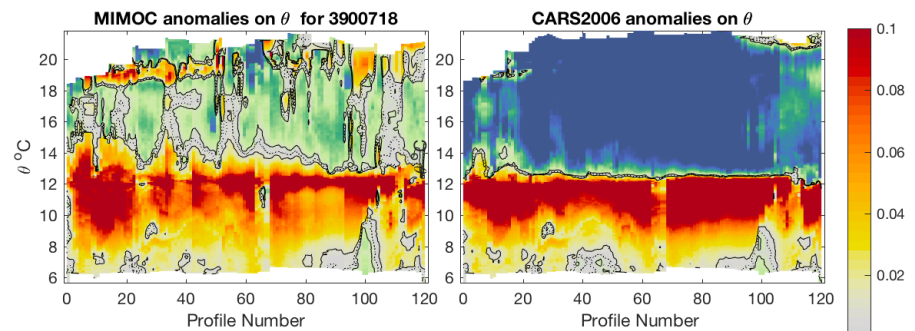
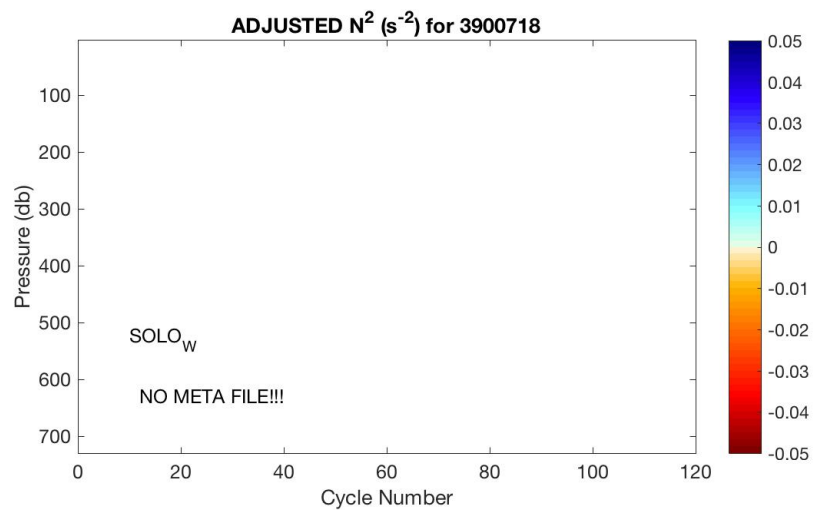
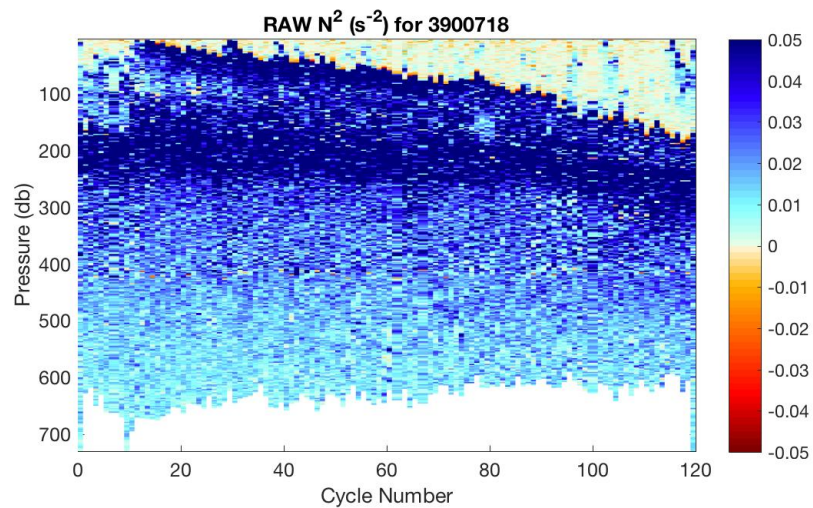


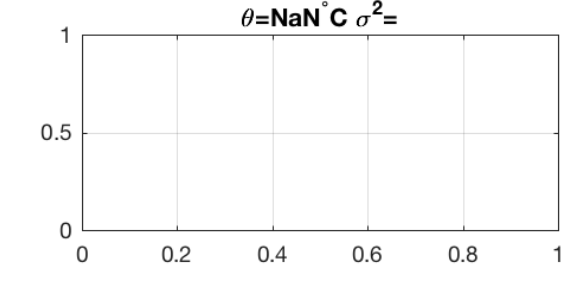
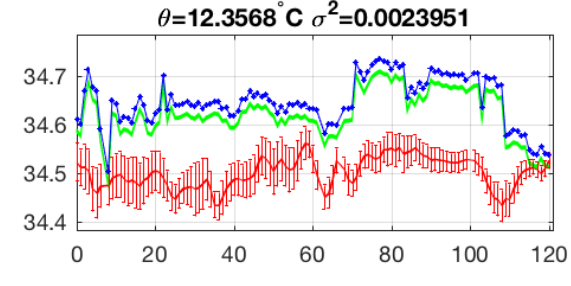
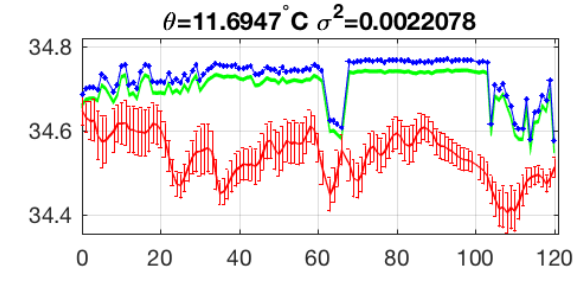
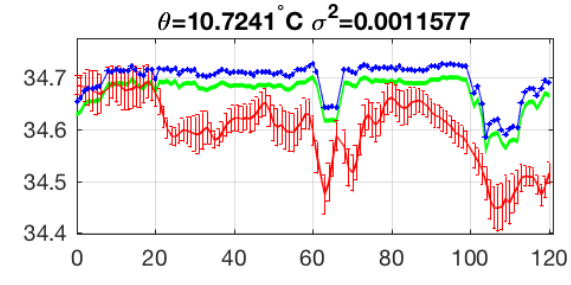
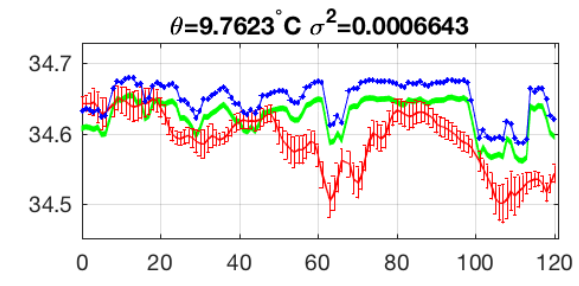
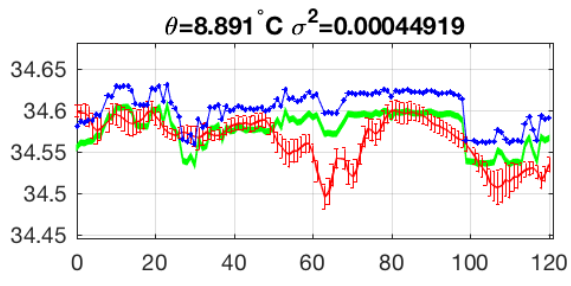
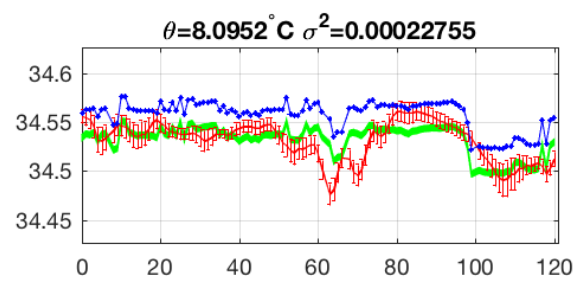
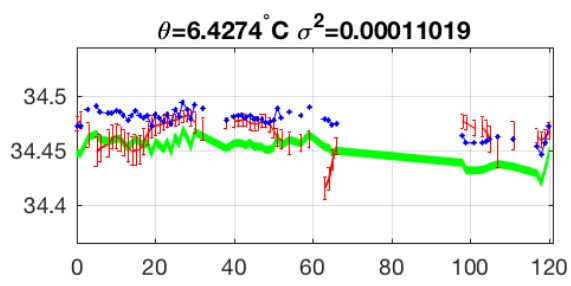
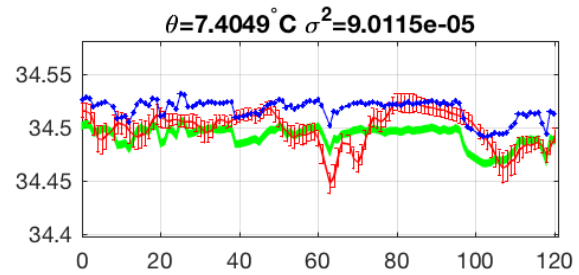
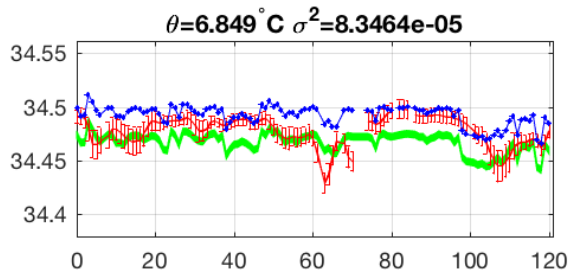
Salinity anom on theta 3900718



Calibrated salinity anom on theta. 3900718







Blue: uncal float; Red: mapped salinity; Green: cal float w/1xerr