

## WMO3900717 - OWC Summary Plots

DMQC Operator: Unknown  
 Date: 02-Jun-2020 10:39:15  
 Config File: cow\_config.txt

### Map Scale

Longitude: 2° / 4°  
 Latitude: 1° / 2°  
 Age: 5yrs / 10yrs  
 PV: 0

SAF: 0

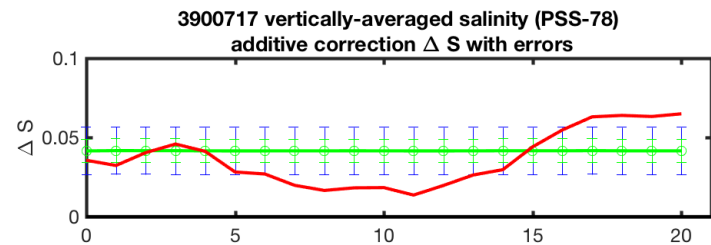
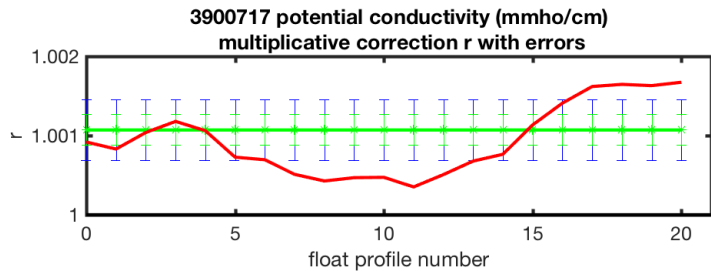
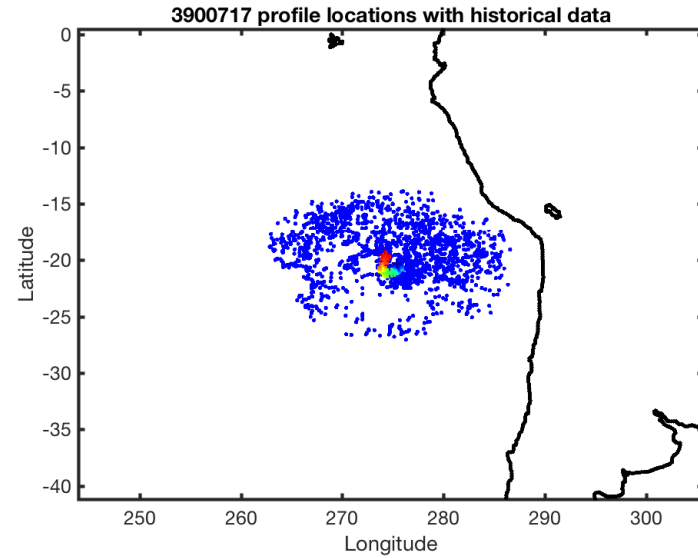
### Output

Pcond factor: 1.0011  
 Salinity Offset: [0.041484 - 0.041681]

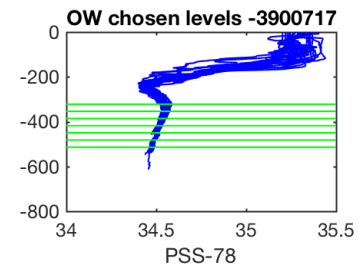
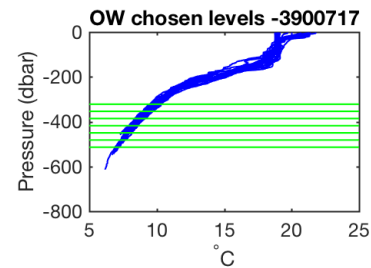
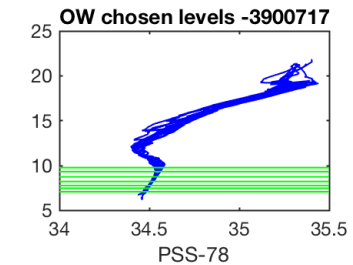
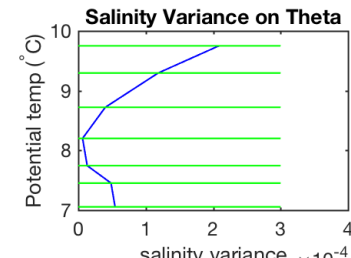
### OWC Parameters

Pressure: : -- < pres < --  
 Theta: -- < theta < 10  
 Breaks: --

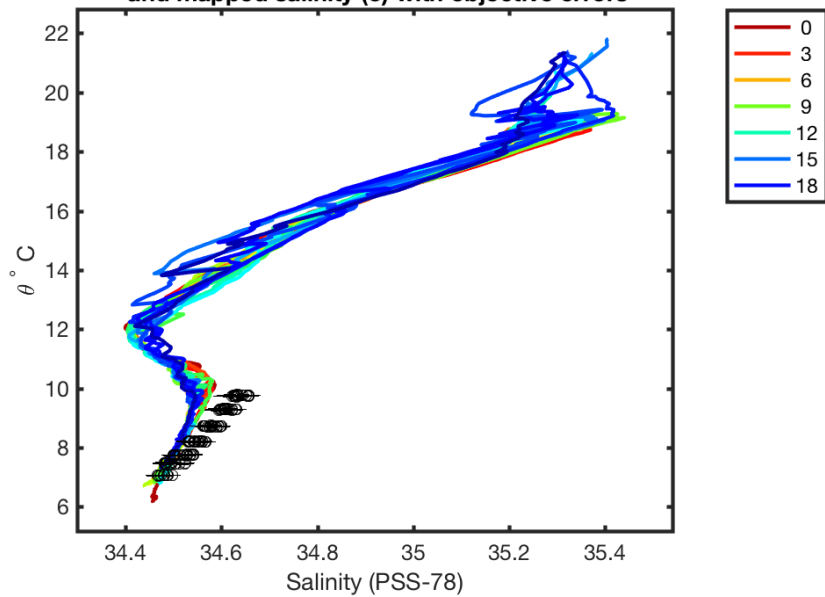
WMO Boxes: wmo\_boxes\_argo19ctd19.mat  
 Historical Argo: ARGO\_for\_DMQC\_2018V01.tar.gz  
 Historical CTD: CTD\_for\_DMQC\_2019V01\_1.tar.gz



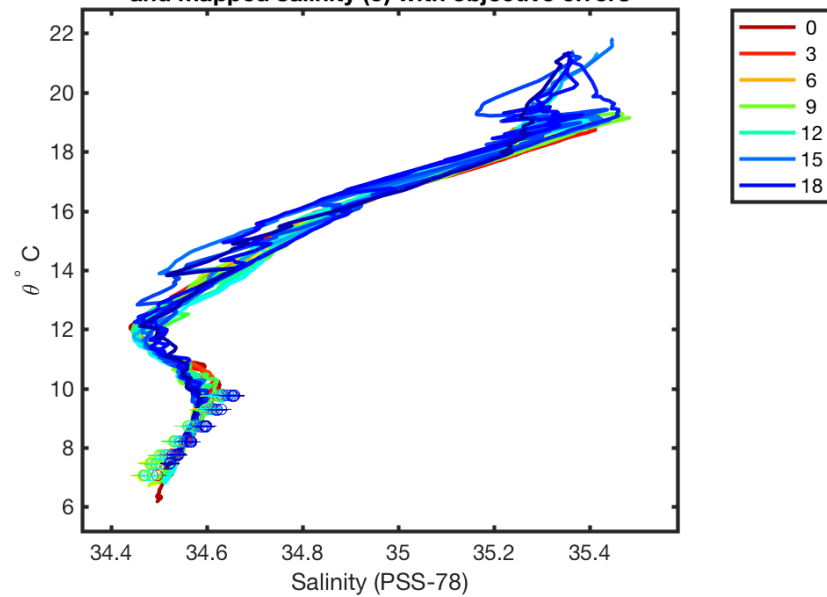
float profile number - blue: 2xcal error; green: 1xcal error; red: 1-1 profile fit



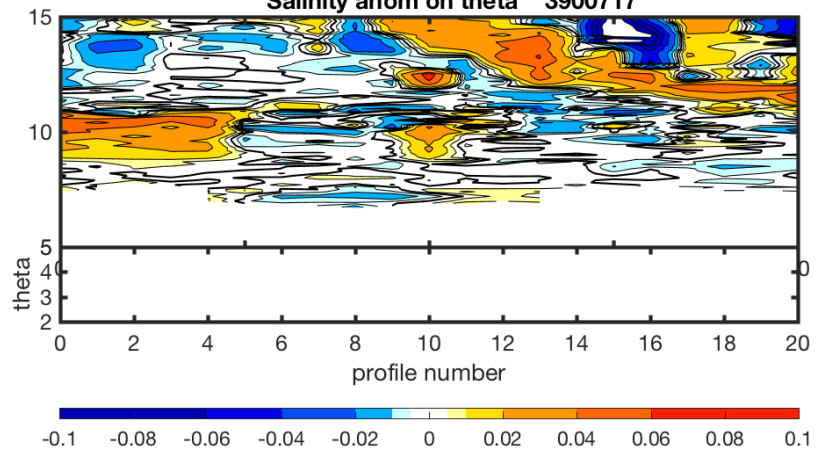
3900717 uncalibrated float data (-)  
and mapped salinity (o) with objective errors



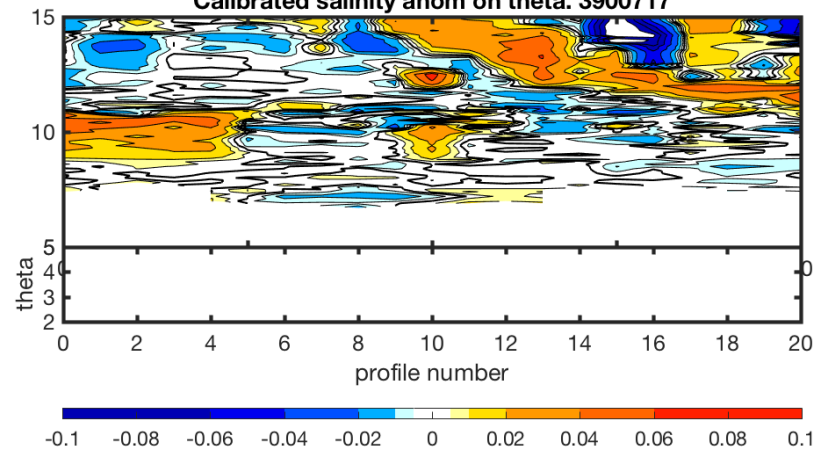
3900717 calibrated float data (-)  
and mapped salinity (o) with objective errors

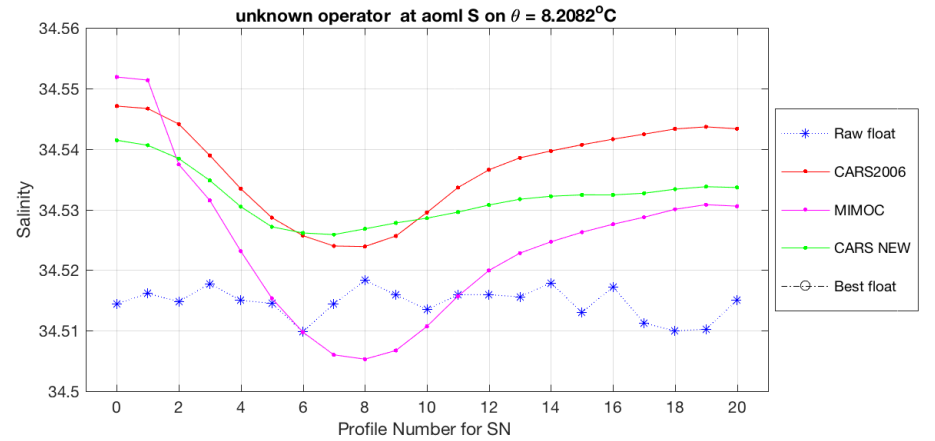
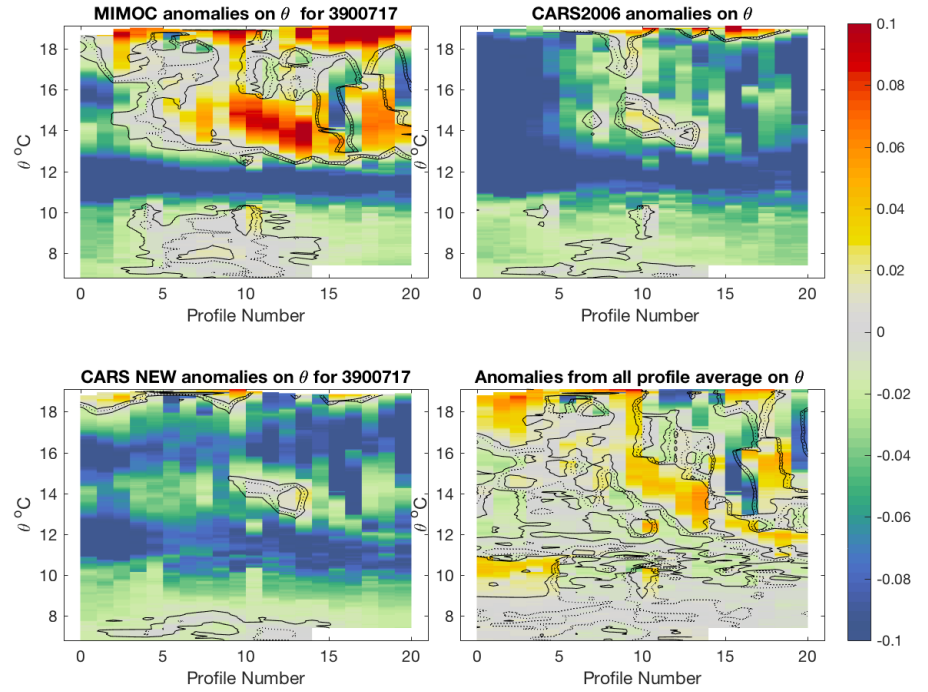
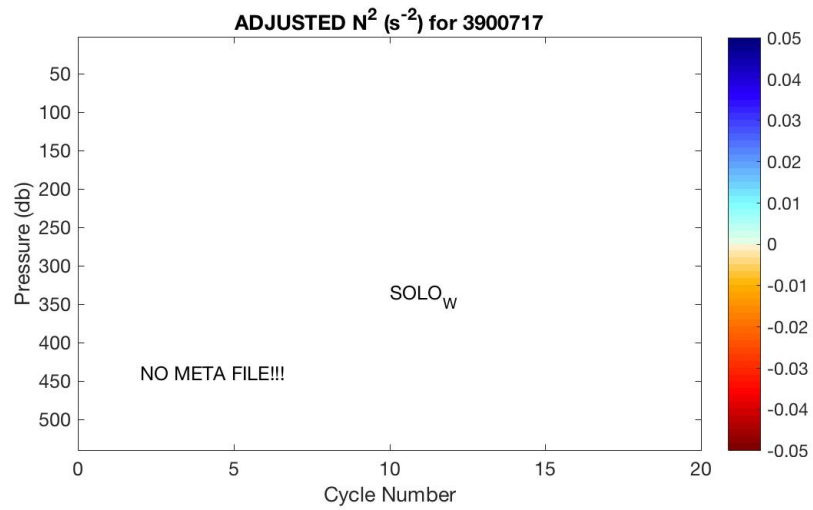
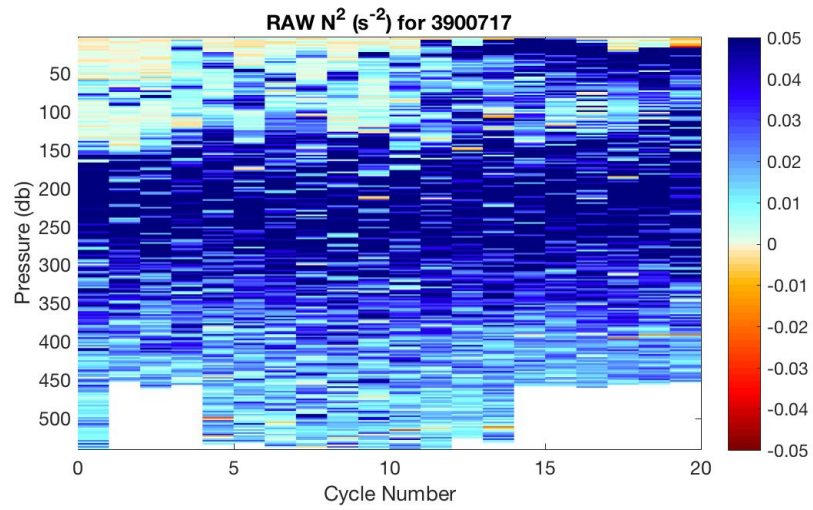


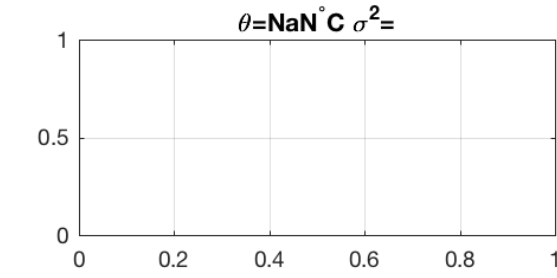
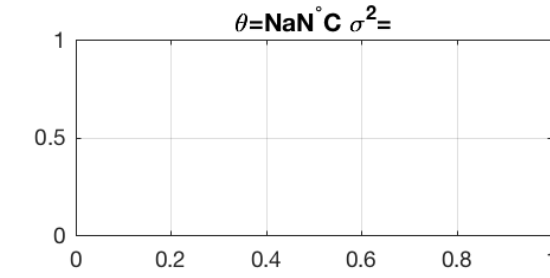
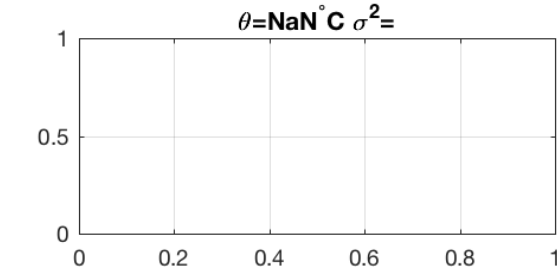
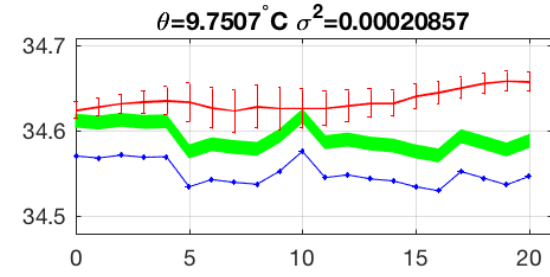
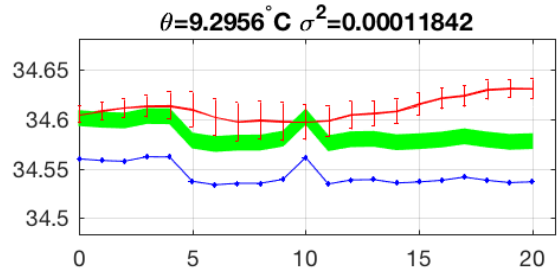
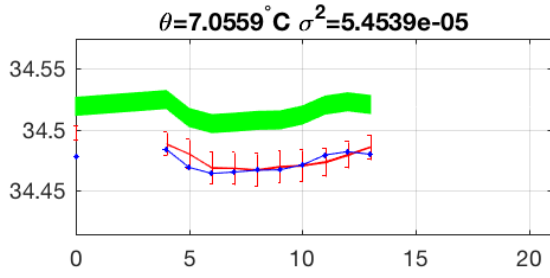
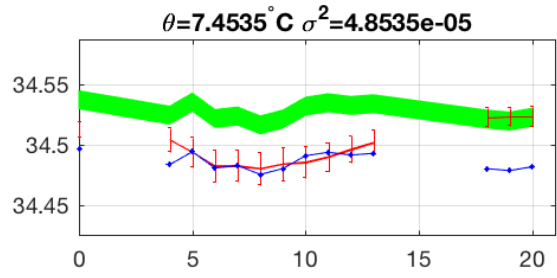
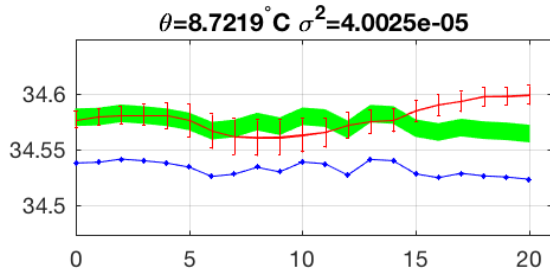
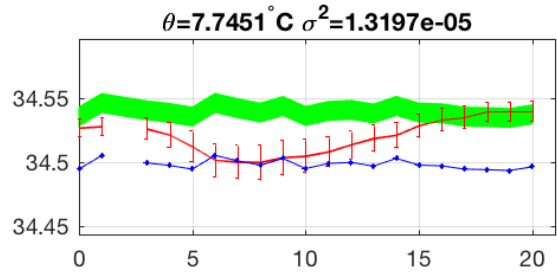
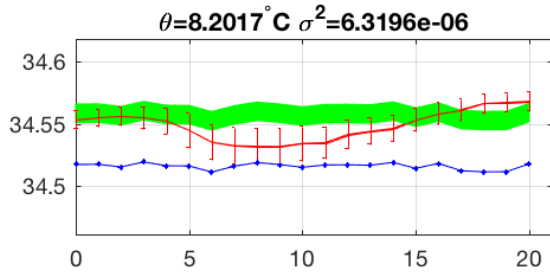
Salinity anom on theta 3900717



Calibrated salinity anom on theta. 3900717







Blue: uncal float; Red: mapped salinity; Green: cal float w/1xerr