

WMO 2903940 - OWC Summary Plots

DMQC Operator: Lola Pierson
 Date: 04-Apr-2026 16:41:15
 Cycles: 1 - 38
 Dfiles: -

Config File: cow_config_sm.txt
 WMO Boxes: wmo_boxes_ctdargo.mat
 Historical Argo: ARGO_for_DMQC_2025V03_1XXX.tar.gz
 Historical CTD: CTD_for_DMQC_2024V01_1.tar.gz

Map Scale

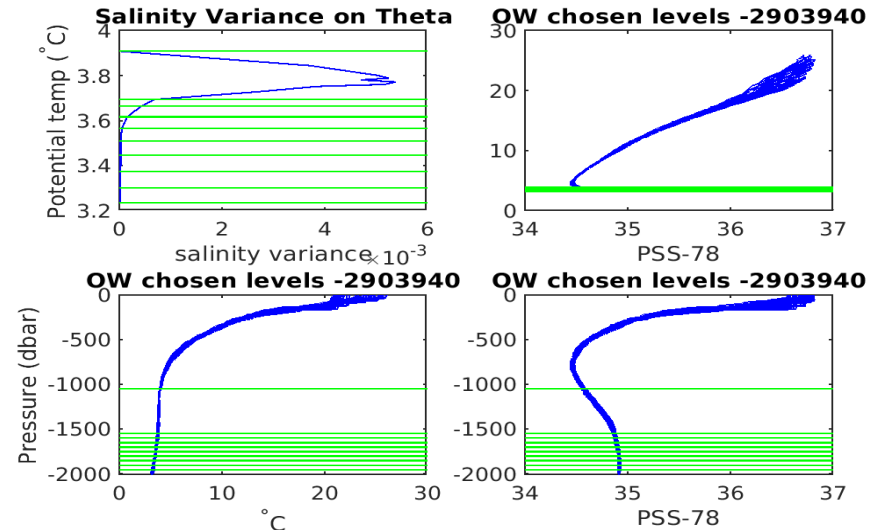
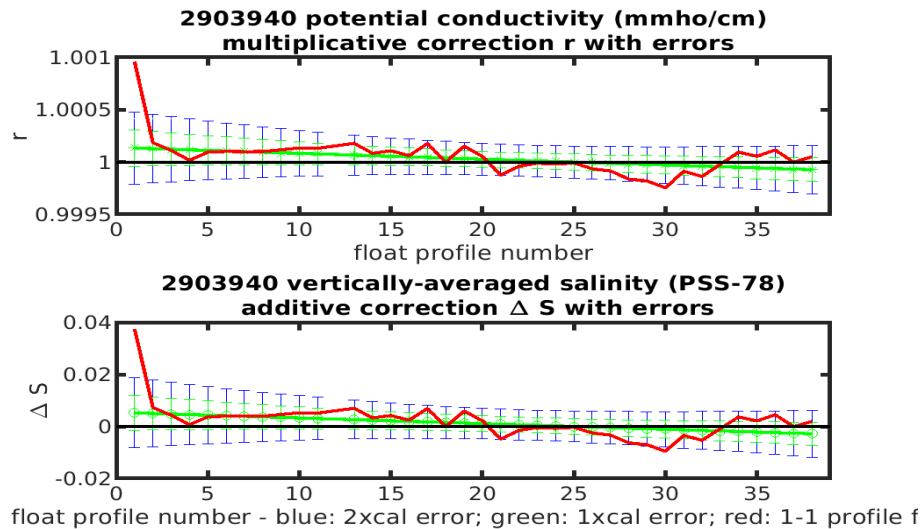
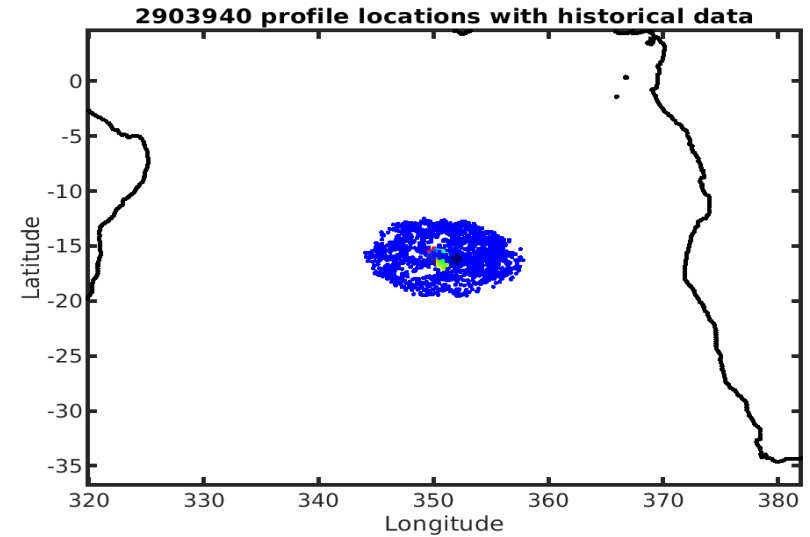
Longitude: 1° / 2°
 Latitude: 0.5° / 1°
 Age: 5yrs / 10yrs
 PV: 0
 SAF: 0

OWC Parameters

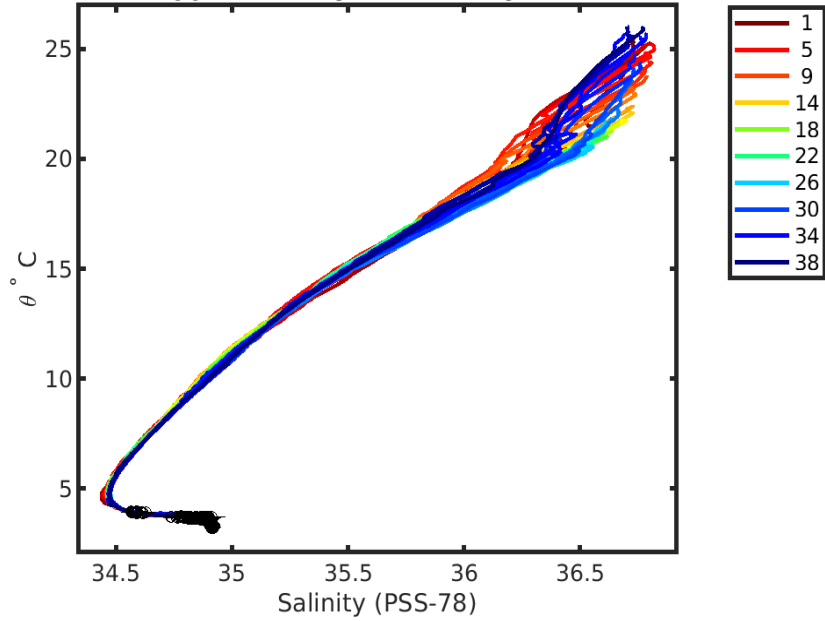
Pressure: : 1000 < pres < --
 Theta: -- < theta < --
 Breaks: --

Output

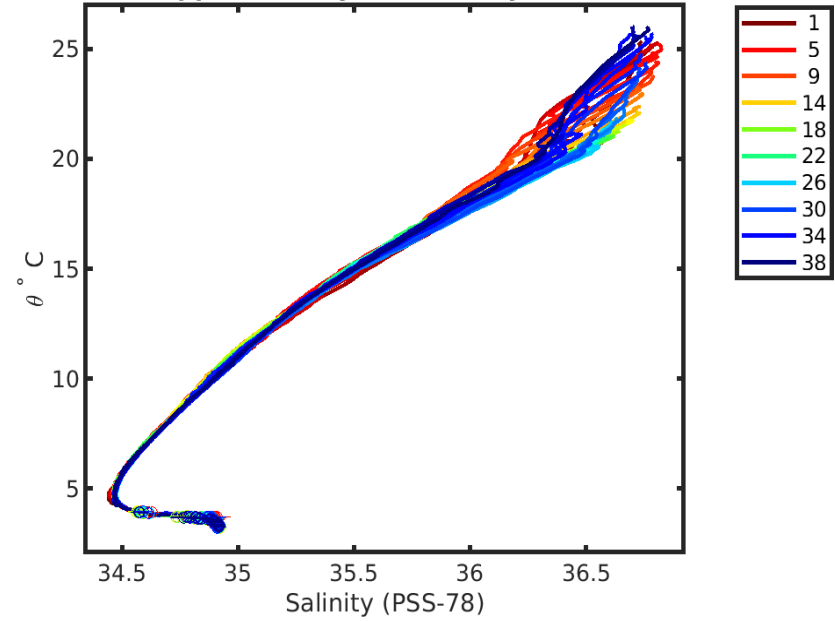
Pcond factor: [0.99993 - 1.0001]
 Salinity Offset: [-0.0028139 - 0.0051983]



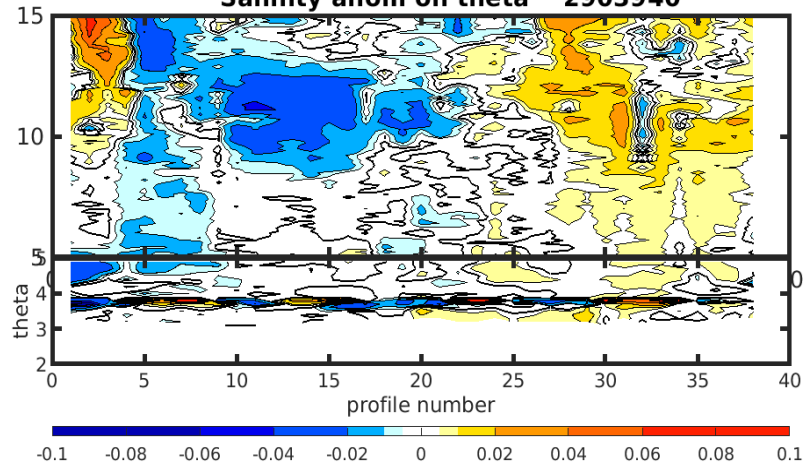
**2903940 uncalibrated float data (-)
and mapped salinity (o) with objective errors**



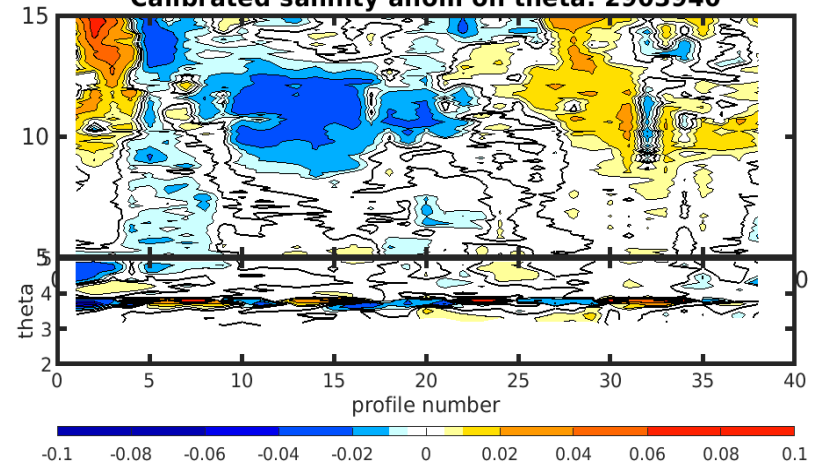
**2903940 calibrated float data (-)
and mapped salinity (o) with objective errors**

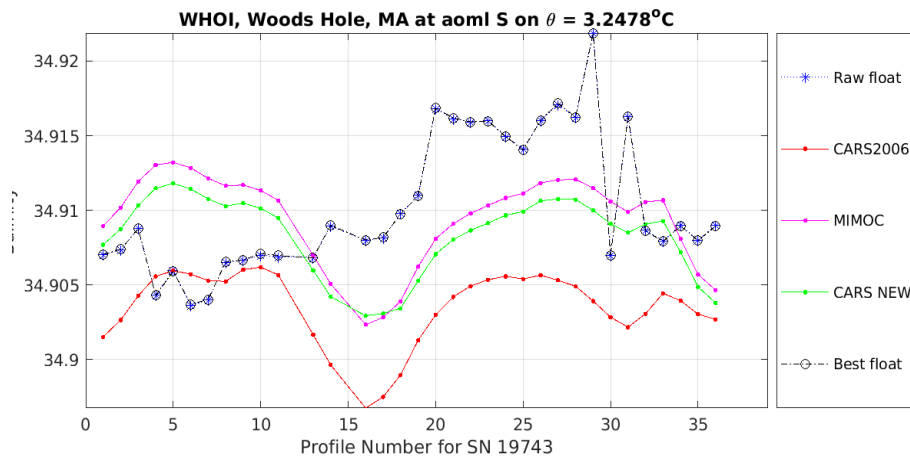
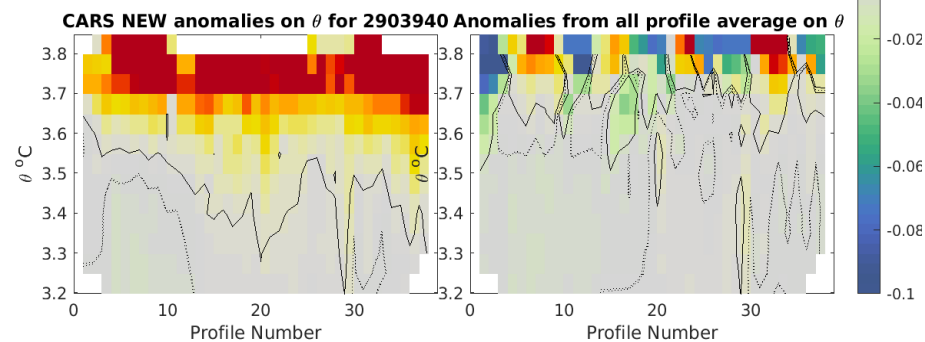
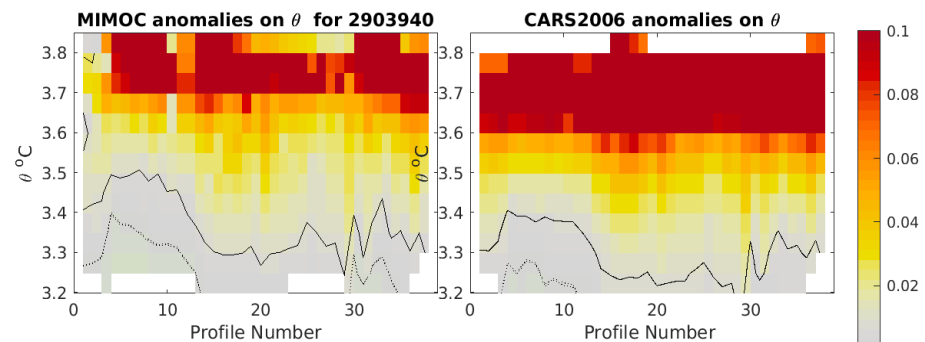
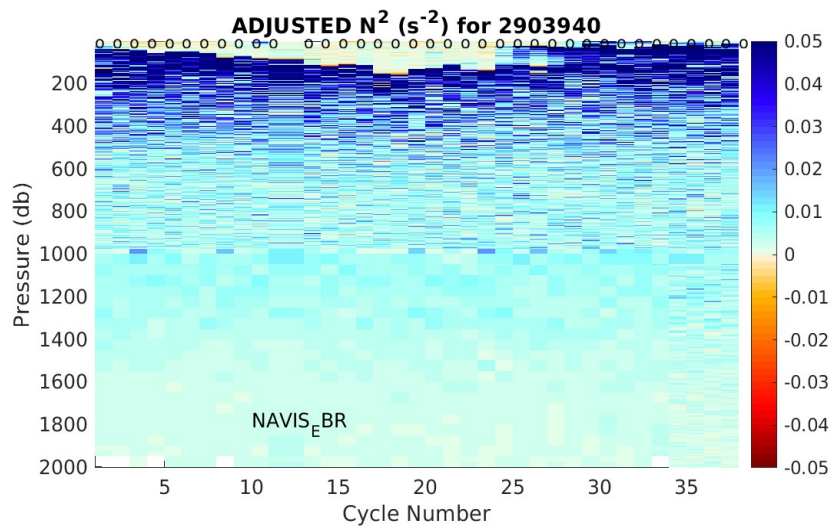
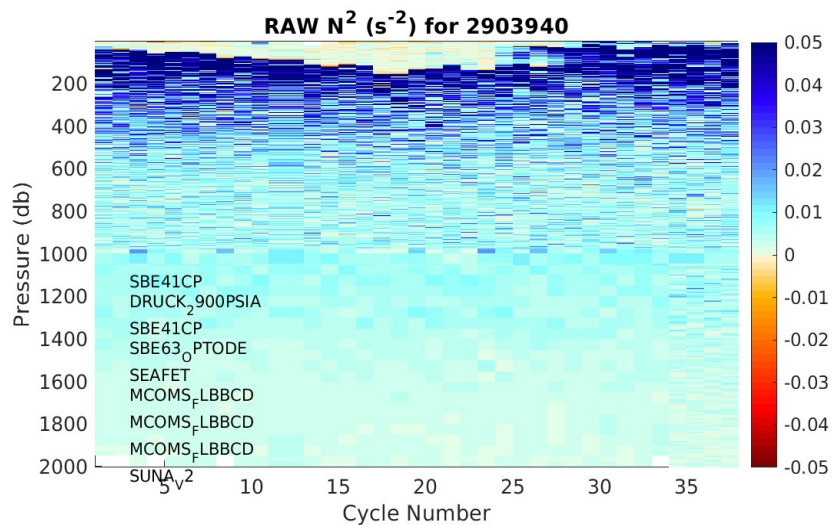


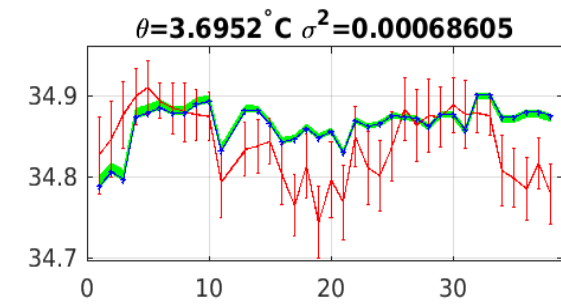
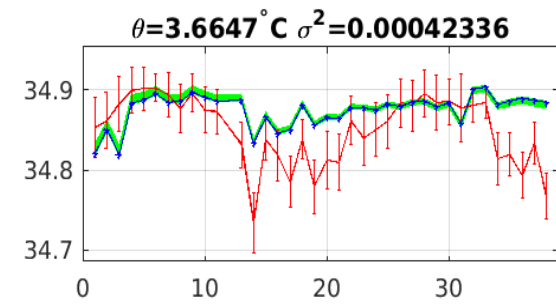
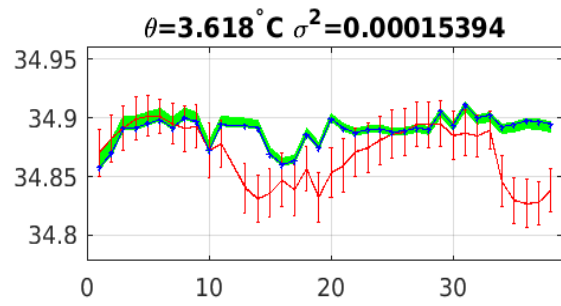
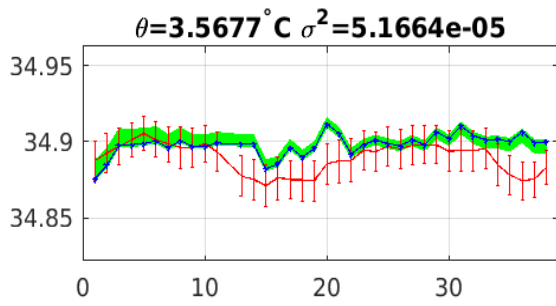
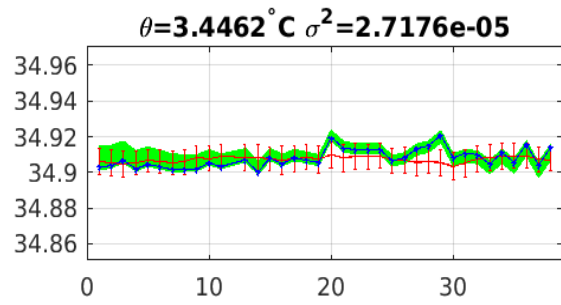
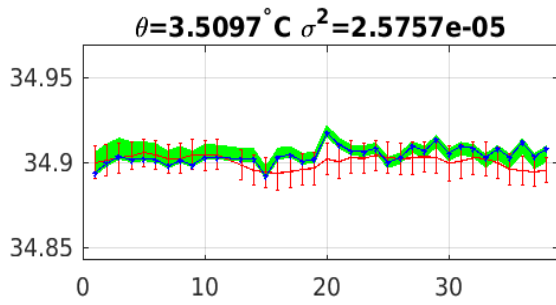
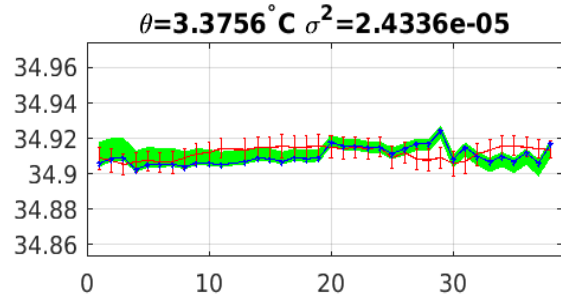
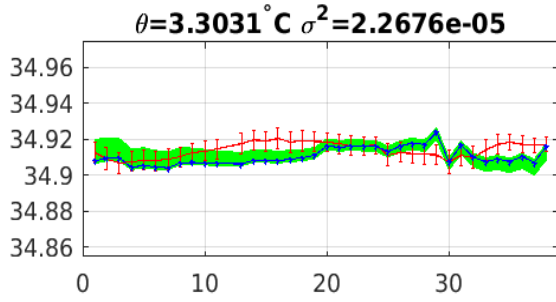
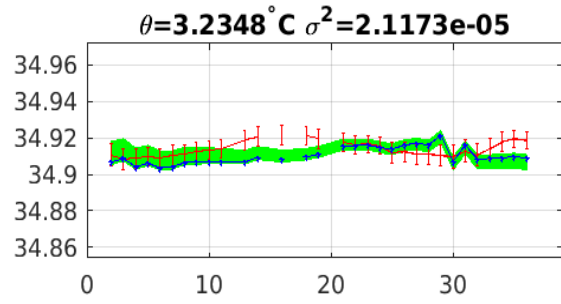
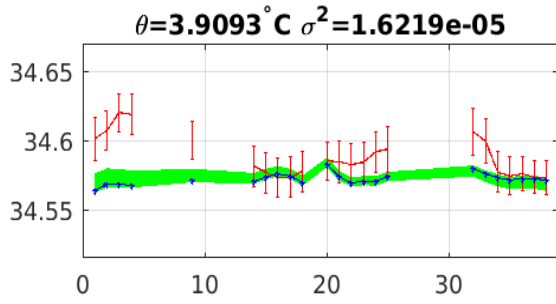
Salinity anom on theta 2903940



Calibrated salinity anom on theta. 2903940







Blue: uncal float; Red: mapped salinity; Green: cal float w/1xerr