

# WMO 1902476 - OWC Summary Plots

DMQC Operator: Deb West-Mack  
 Date: 30-Jan-2025 09:08:44  
 Cycles: 1 - 130  
 Dfiles: -

Config File: cow\_config\_deep\_sm.txt  
 WMO Boxes: wmo\_boxes\_ctd.mat  
 Historical Argo: ARGO\_for\_DMQC\_2023V03\_1XXX.tar.gz  
 Historical CTD: CTD\_for\_DMQC\_2024V01\_1.tar.gz

## Map Scale

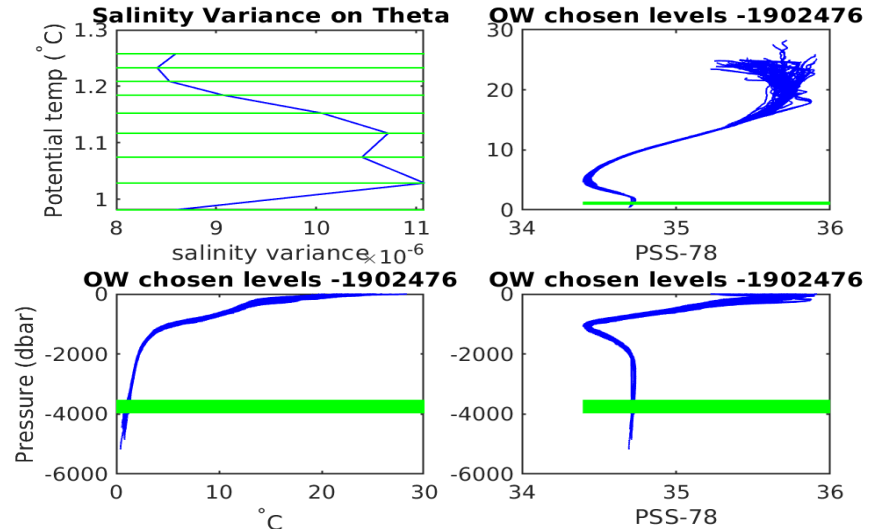
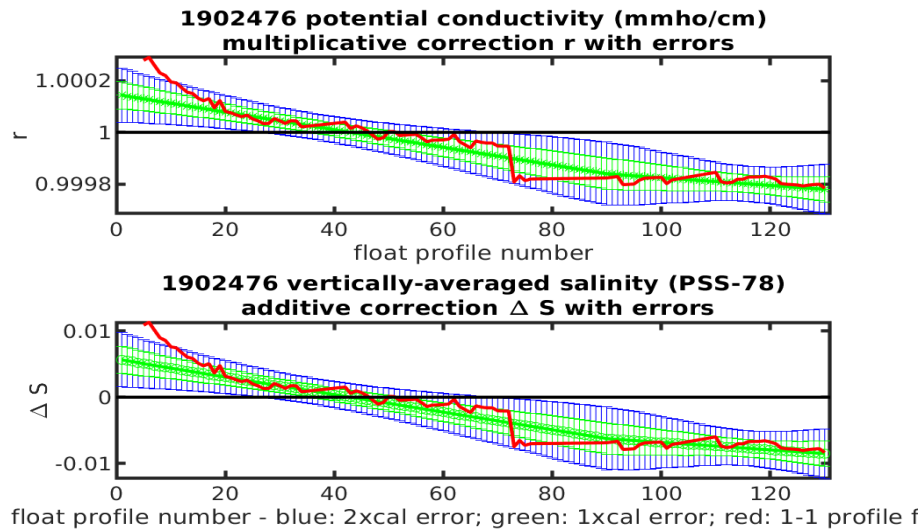
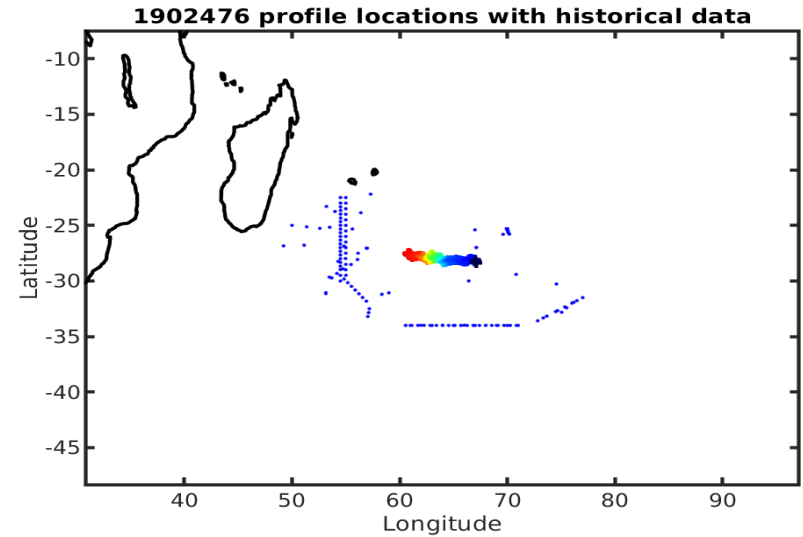
Longitude: 2° / 4°  
 Latitude: 1° / 2°  
 Age: 10yrs / 20yrs  
 PV: 0  
 SAF: 0

## OWC Parameters

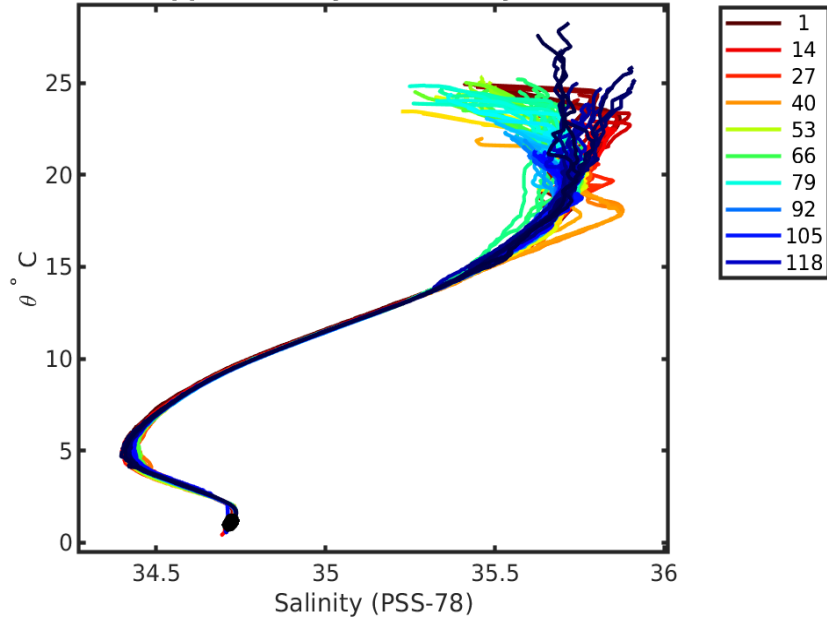
Pressure: : 3500 < pres < --  
 Theta: -- < theta < --  
 Breaks: 90.1553

## Output

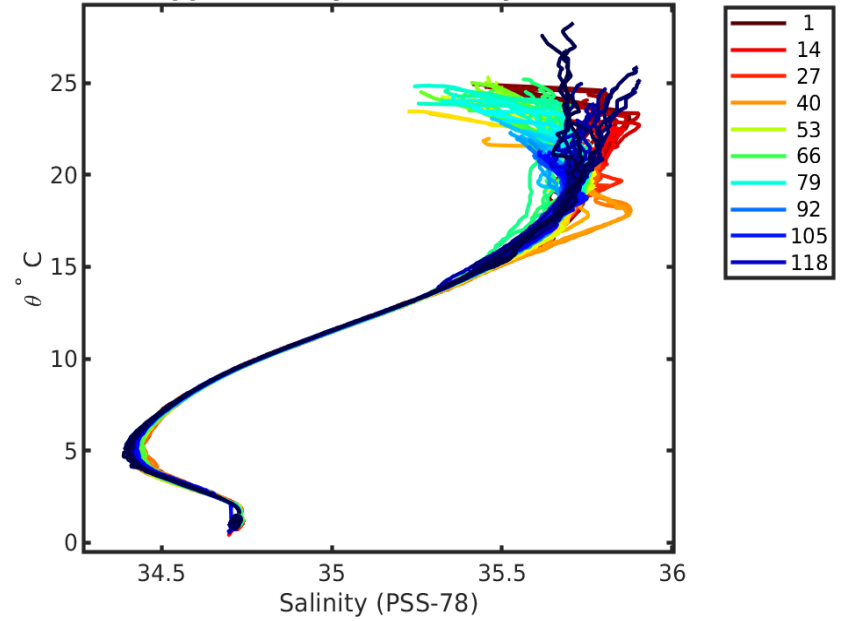
Pcond factor: [0.99978 - 1.0001]  
 Salinity Offset: [-0.0085072 - 0.0056387]



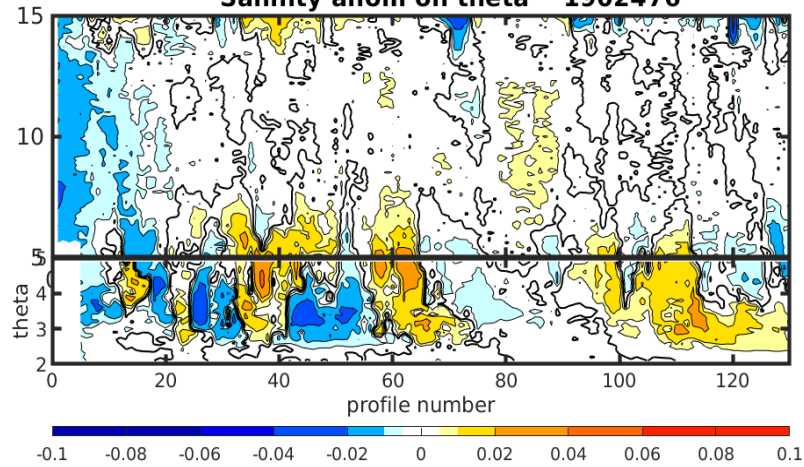
1902476 uncalibrated float data (-)  
and mapped salinity (o) with objective errors



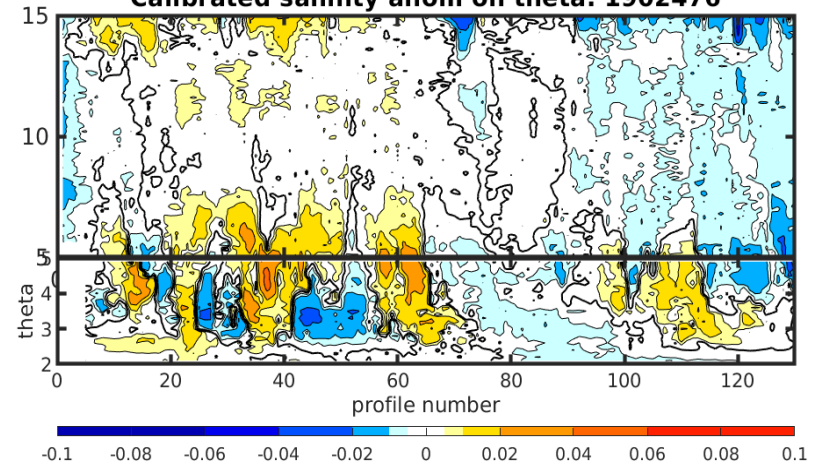
1902476 calibrated float data (-)  
and mapped salinity (o) with objective errors

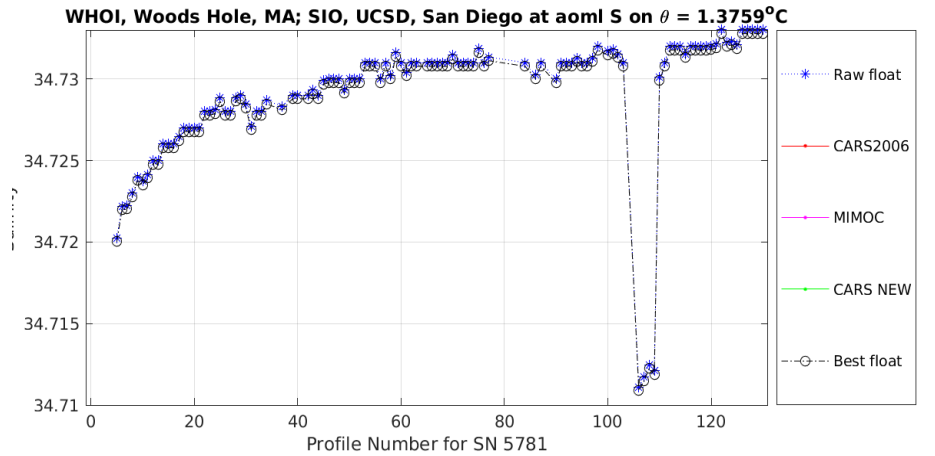
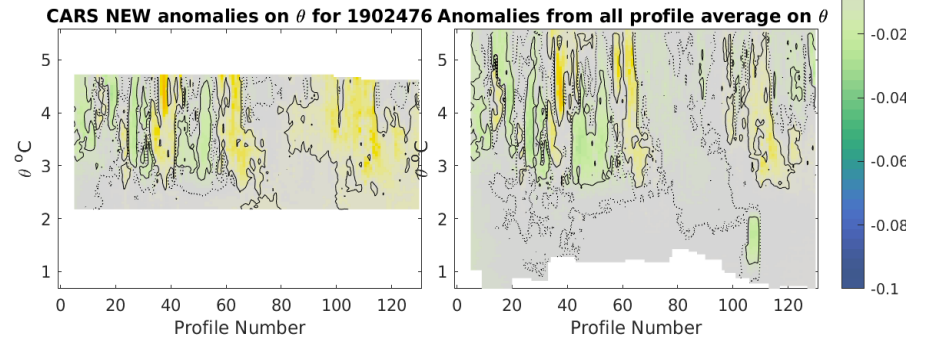
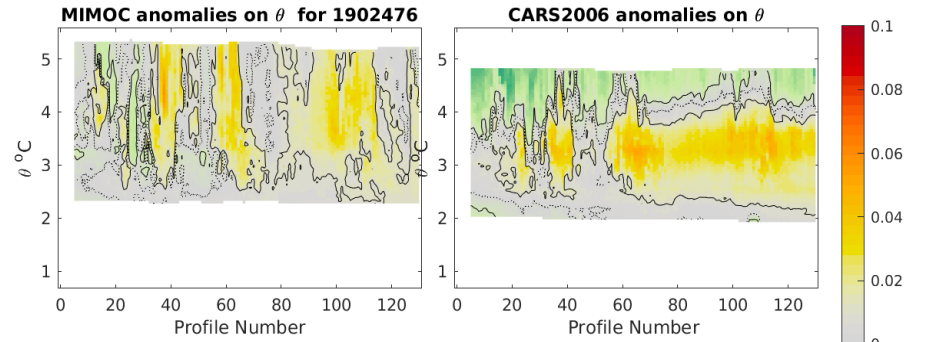
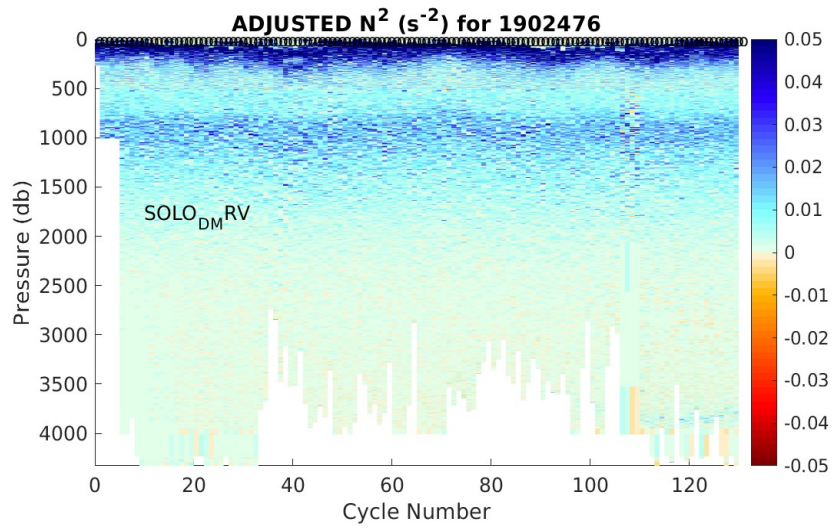
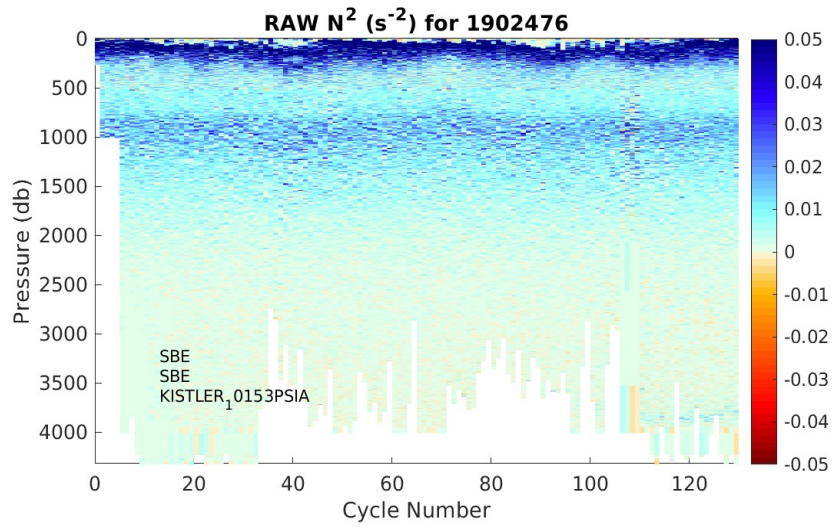


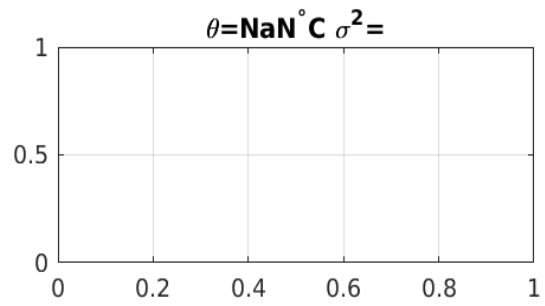
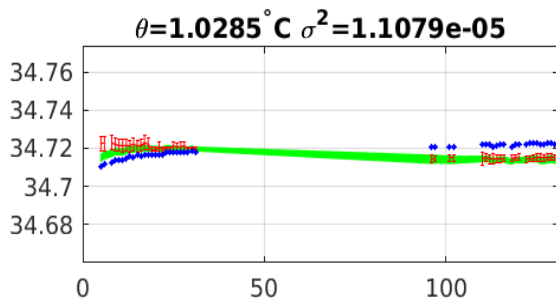
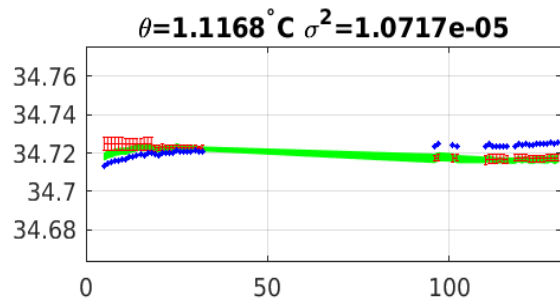
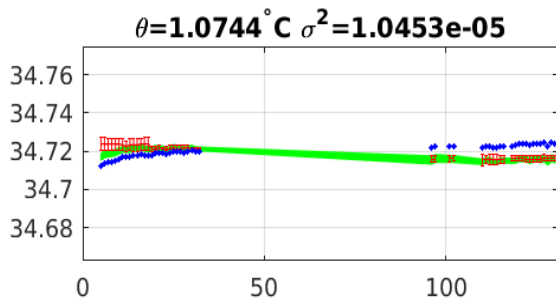
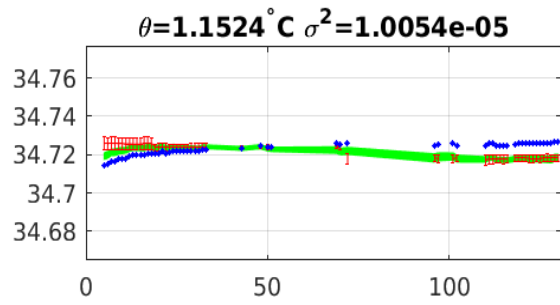
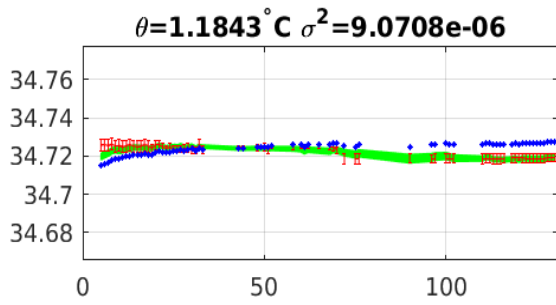
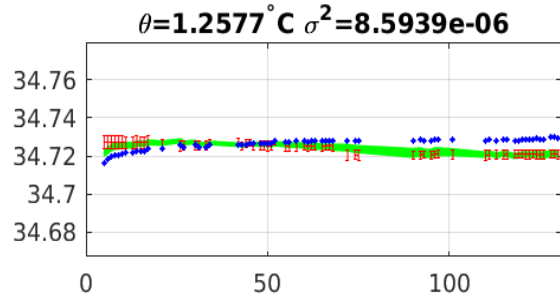
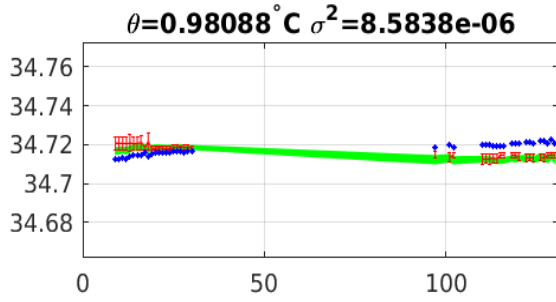
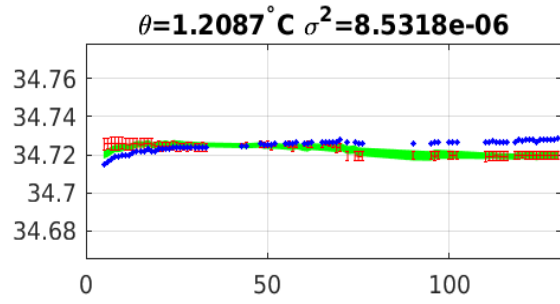
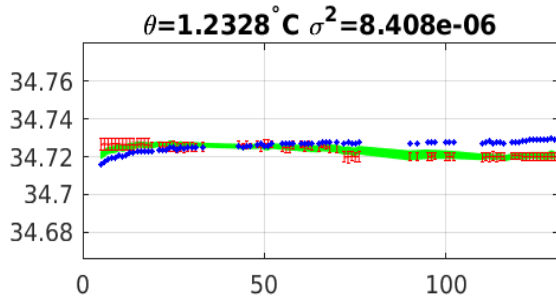
Salinity anom on theta 1902476



Calibrated salinity anom on theta. 1902476







Blue: uncal float; Red: mapped salinity; Green: cal float w/1xerr