

# WMO 1901621 - OWC Summary Plots

DMQC Operator: Deb West-Mack  
 Date: 12-Jan-2022 08:37:59  
 Config File: cow\_config\_sm.txt

WMO Boxes: wmo\_boxes\_ctd21argo21.mat  
 Historical Argo: ARGO\_for\_DMQC\_2021V03\_1XXXX.tar.gz  
 Historical CTD: CTD\_for\_DMQC\_2021V02\_1.tgz

## Map Scale

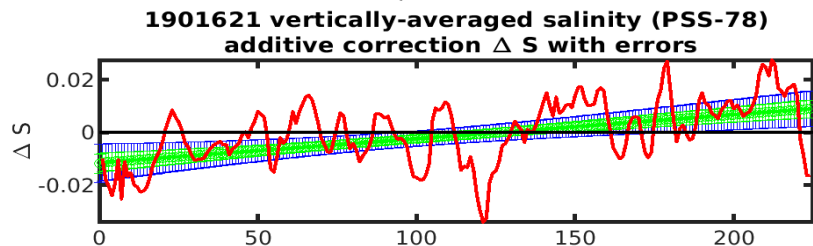
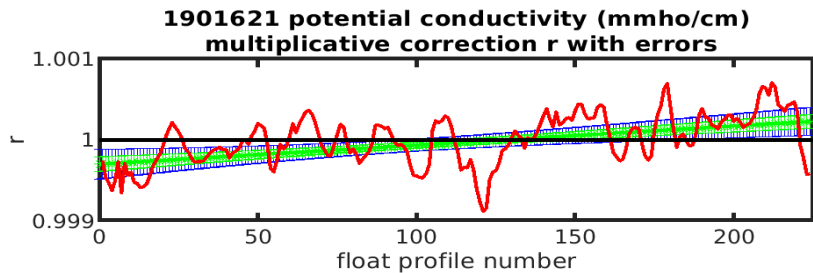
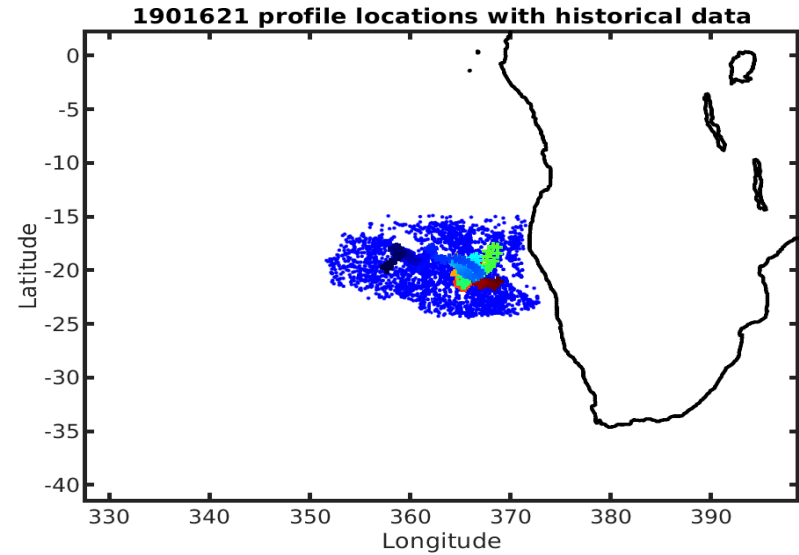
Longitude: 1° / 2°  
 Latitude: 0.5° / 1°  
 Age: 5yrs / 10yrs  
 PV: 0  
 SAF: 0

## OWC Parameters

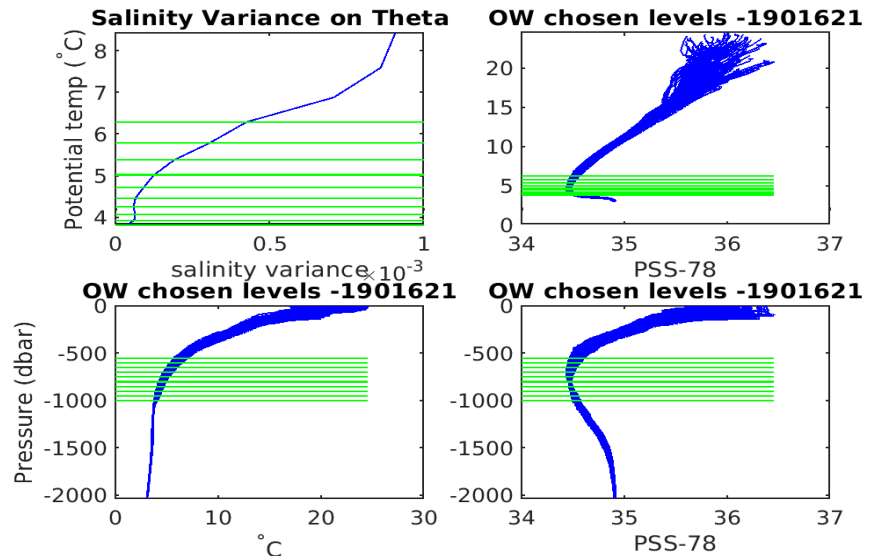
Pressure: : -- < pres < --  
 Theta: -- < theta < --  
 Breaks: --

## Output

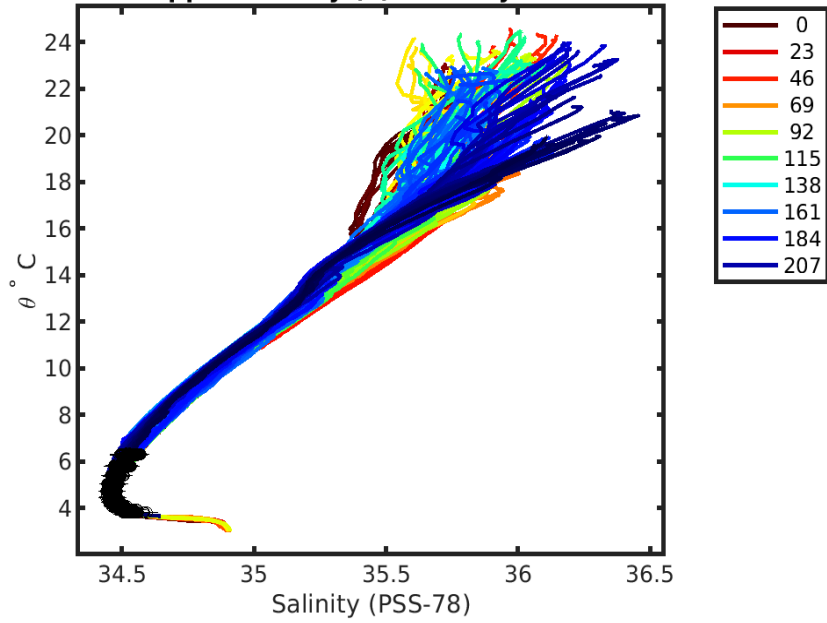
Pcond factor: [0.9997 - 1.0002]  
 Salinity Offset: [-0.011832 - 0.0089082]



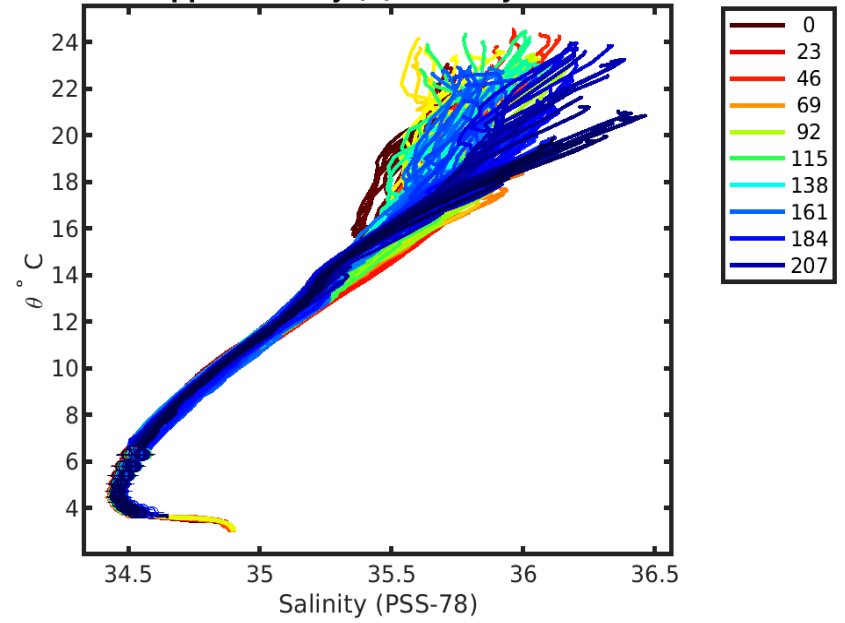
float profile number - blue: 2xcal error; green: 1xcal error; red: 1-1 profile f



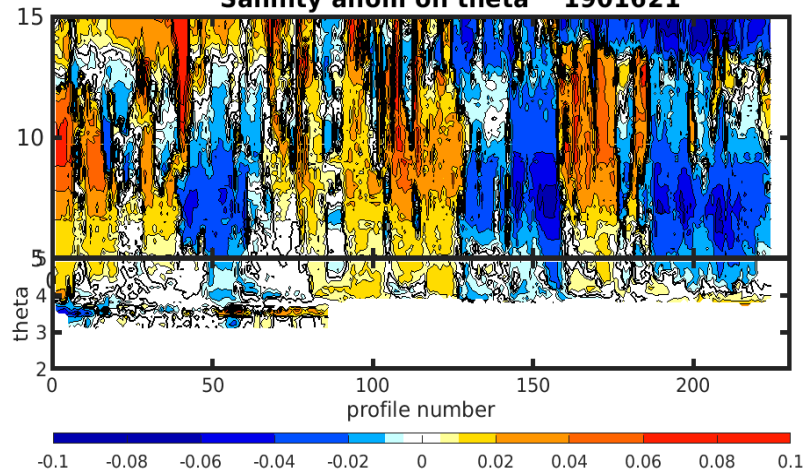
1901621 uncalibrated float data (-)  
and mapped salinity (o) with objective errors



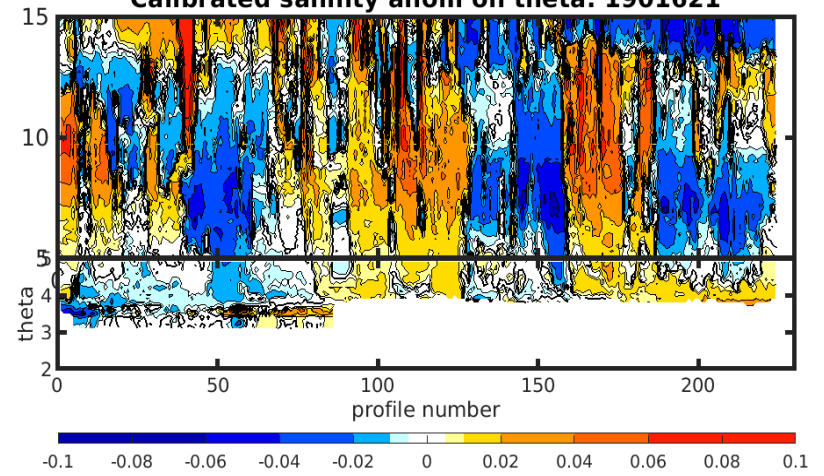
1901621 calibrated float data (-)  
and mapped salinity (o) with objective errors

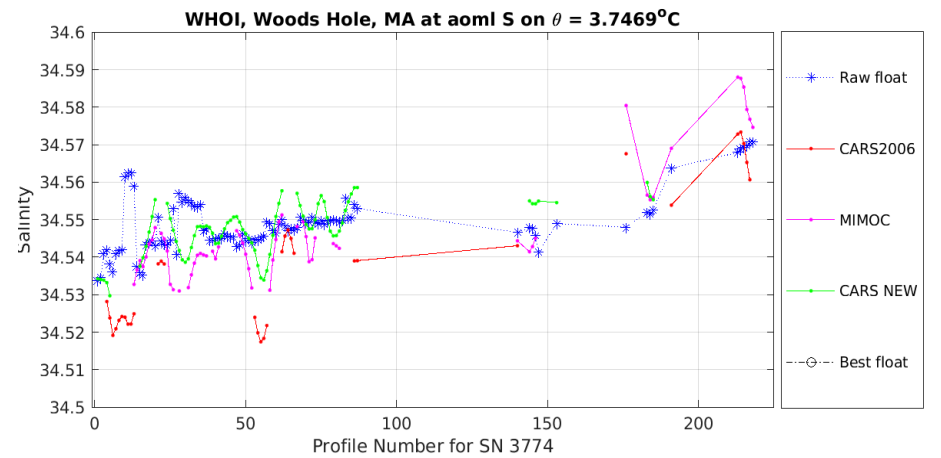
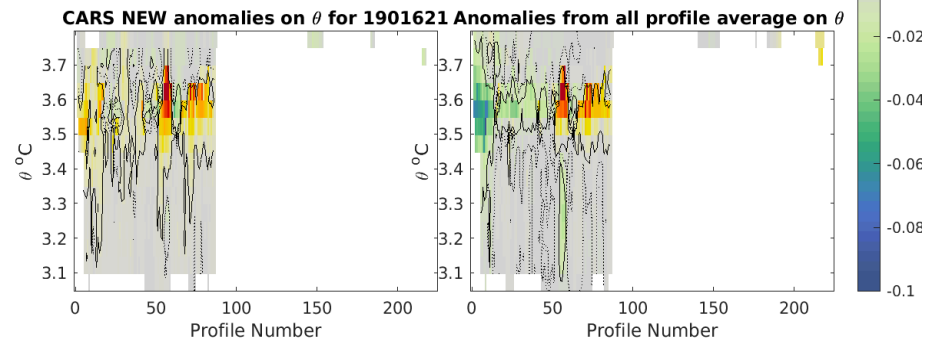
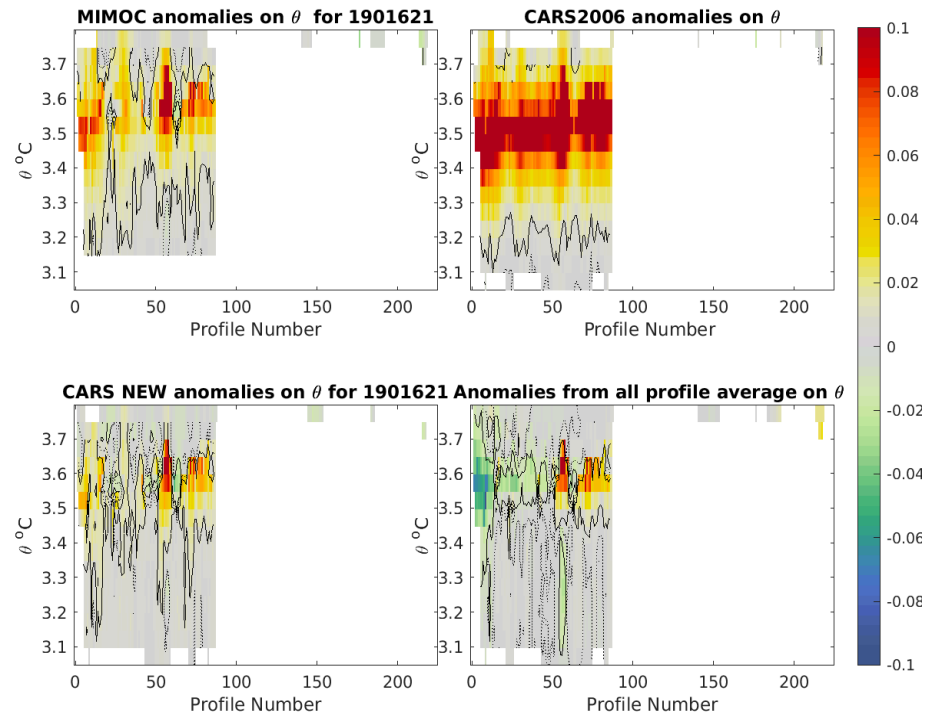
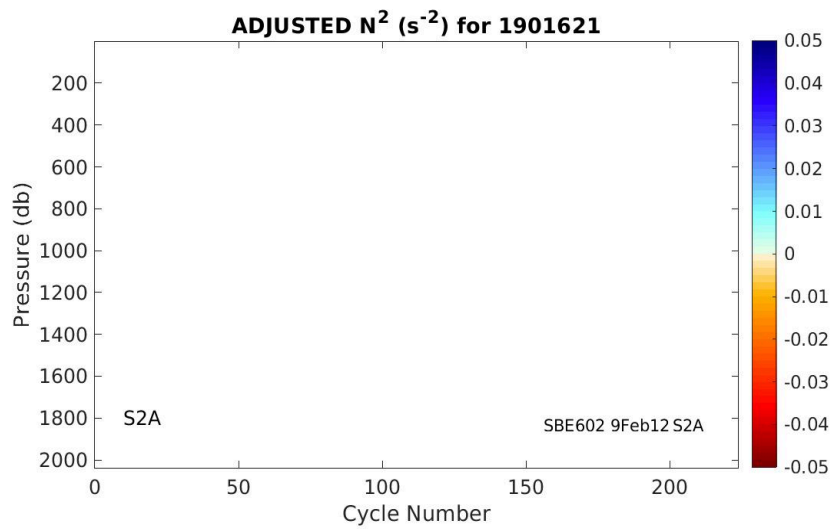
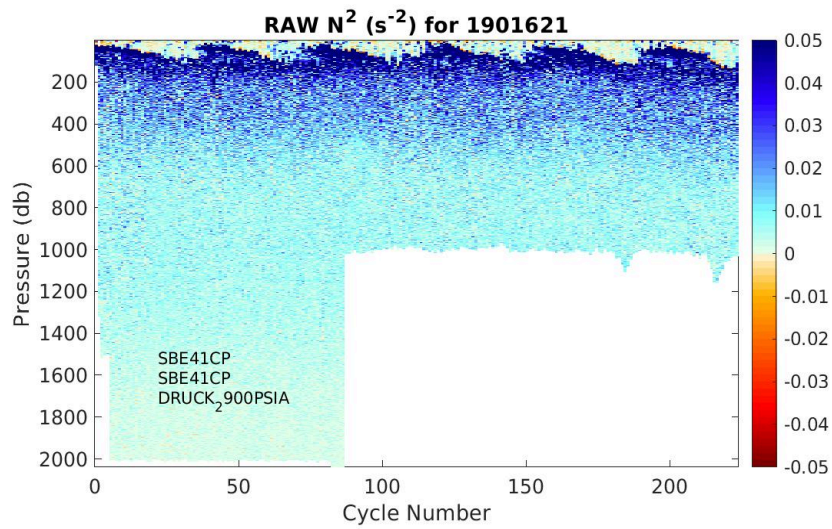


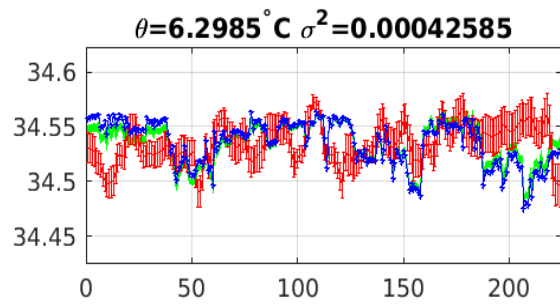
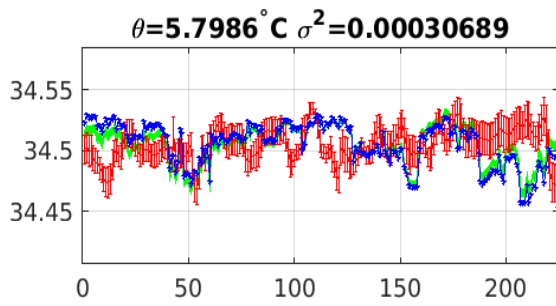
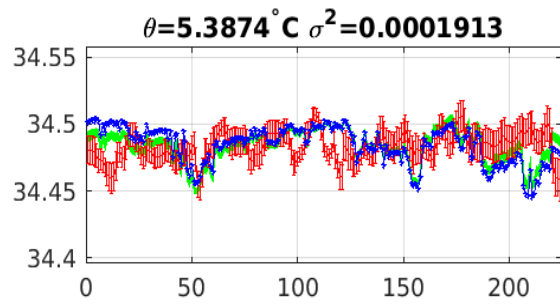
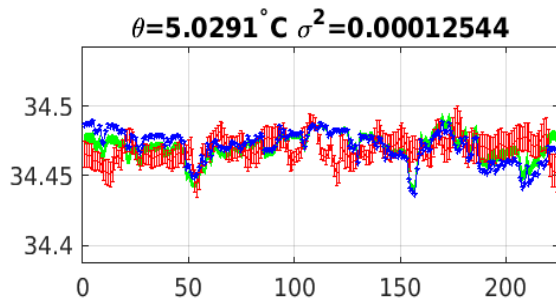
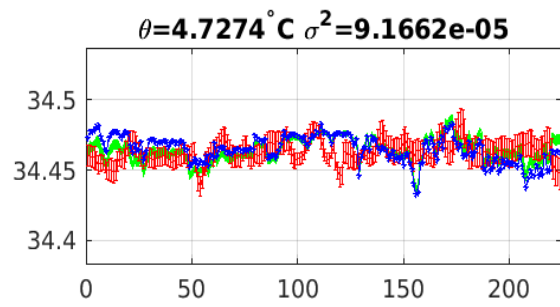
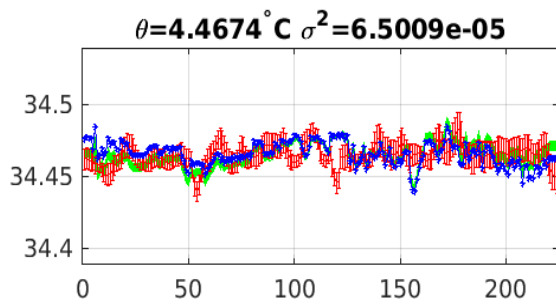
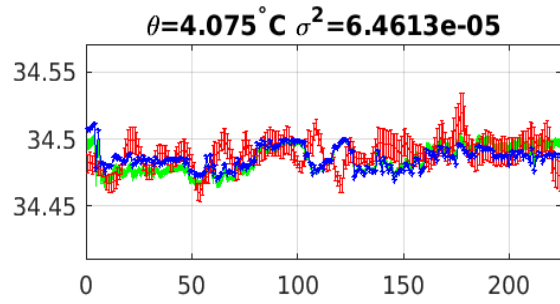
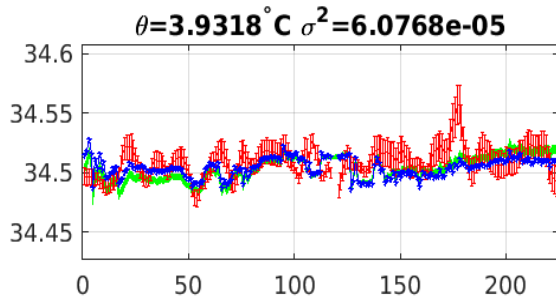
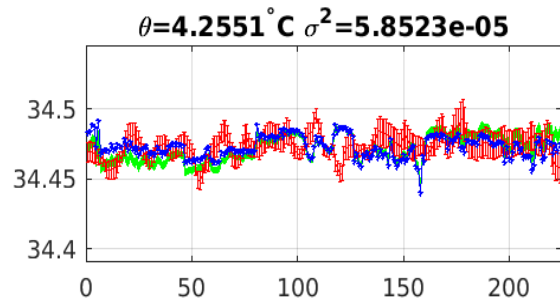
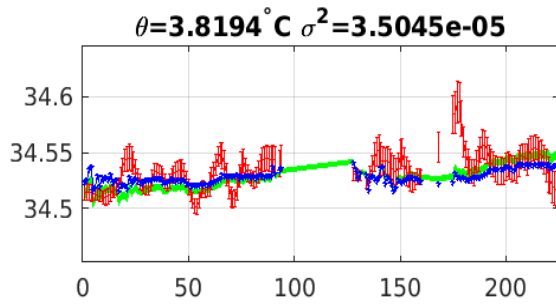
Salinity anom on theta 1901621



Calibrated salinity anom on theta. 1901621







Blue: uncal float; Red: mapped salinity; Green: cal float w/1xerr