

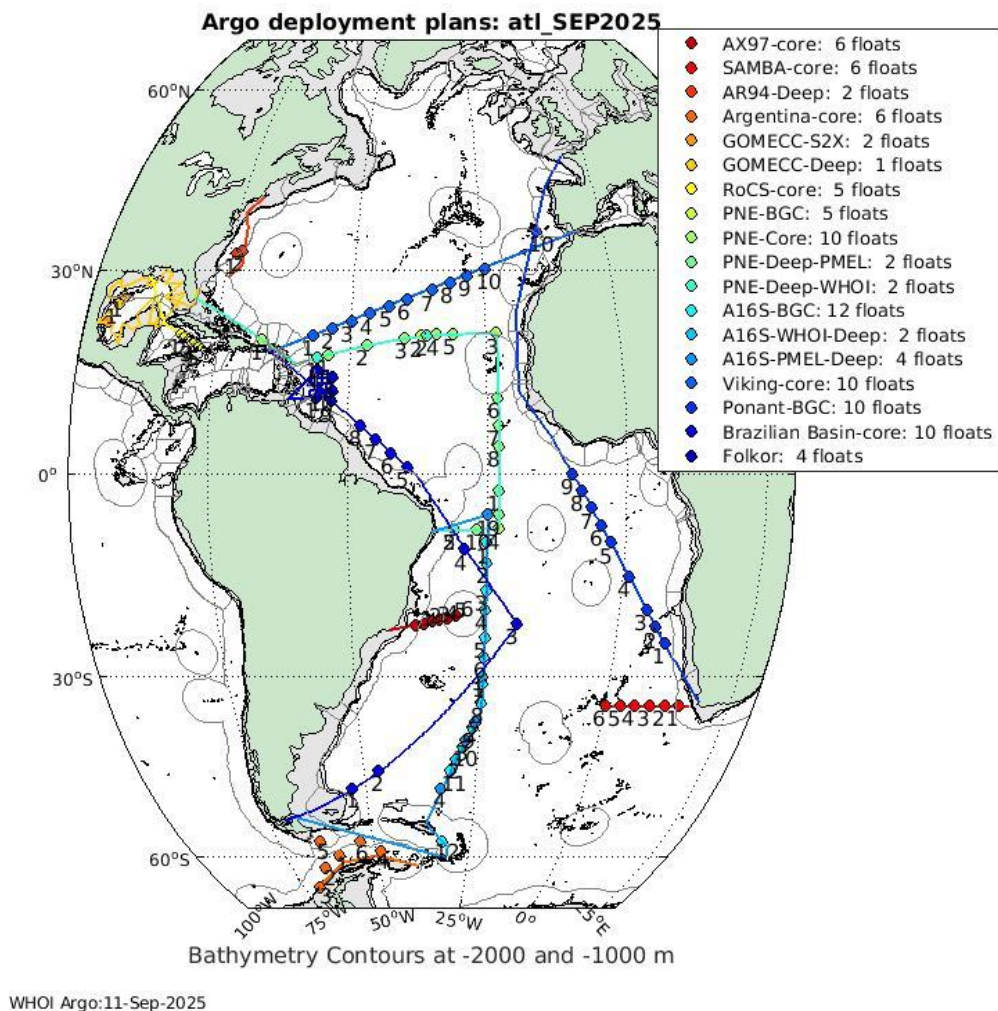
# WHOI OneArgo Deployment Plans

## September 2025

Updated plans and deployment manuals at <https://argo.whoi.edu/argo/deployment/>

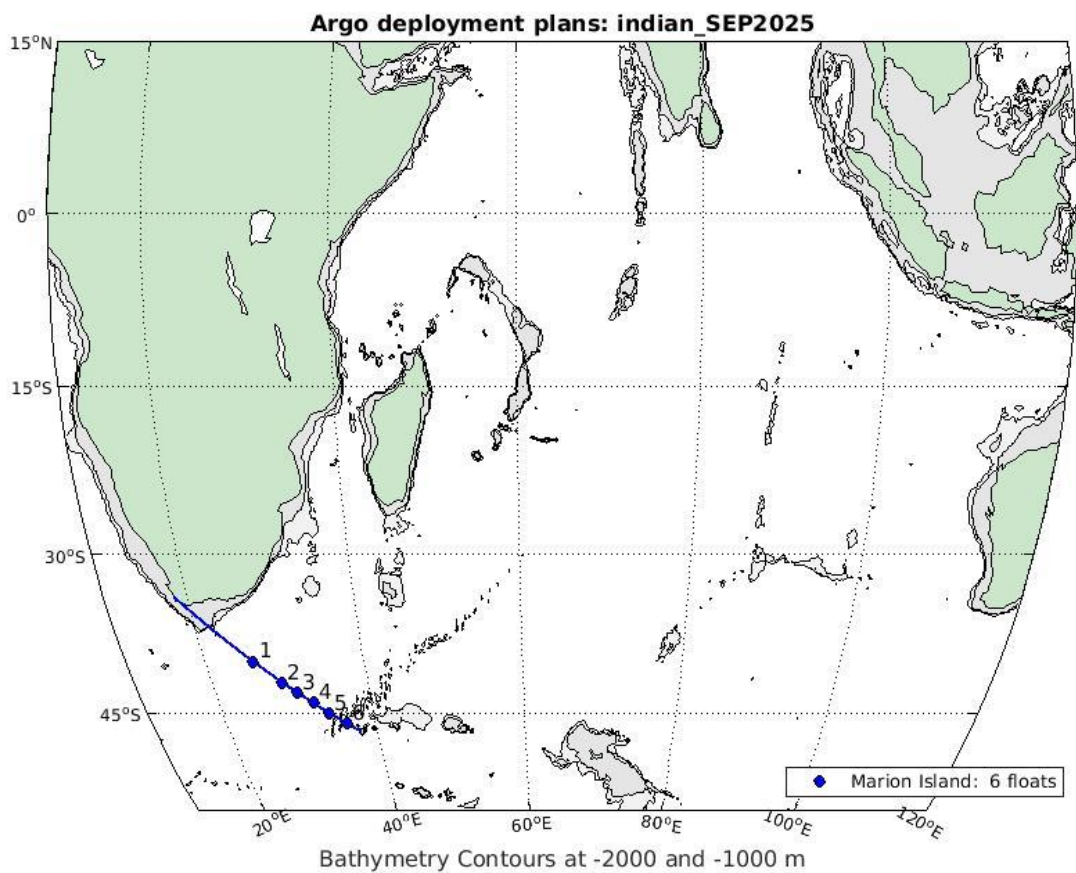
Contacts: Deb West-Mack ([dwest@whoi.edu](mailto:dwest@whoi.edu)), Pelle Robbins ([probbins@whoi.edu](mailto:probbins@whoi.edu)), Aidan Thayer ([aidan.thayer@whoi.edu](mailto:aidan.thayer@whoi.edu))

### Atlantic Ocean



Core : 59 (6 for MMA not shown)  
BGC : 27  
Deep : 7 (+6 PMEL)  
S2X : 6

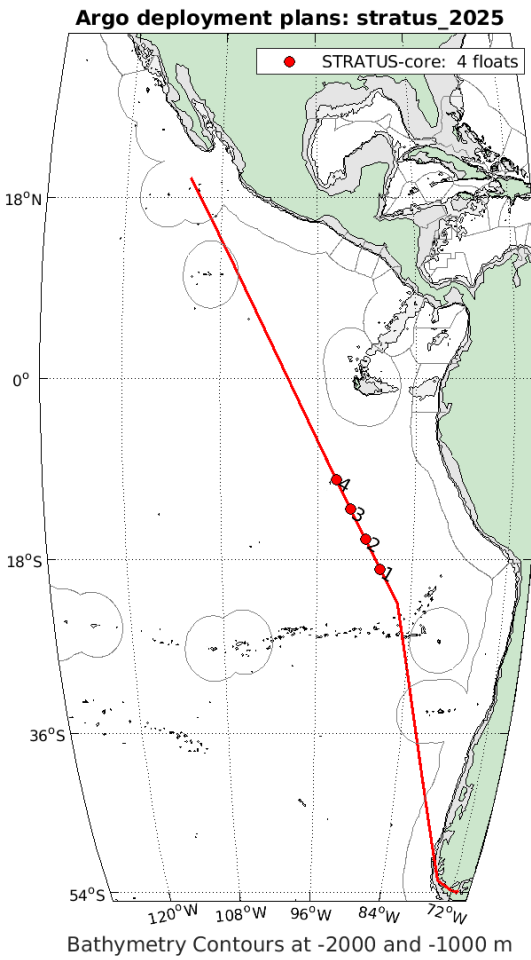
Indian/Southern Ocean



WHOI Argo:15-Sep-2025

Core : 6  
BGC : 0  
Deep: 0

Pacific Ocean



WHOI Argo:12-Sep-2025

Core : 4  
BGC : 0  
Deep: 0

## Arctic Ocean

No Cruise tracks are available yet.

Core : 4  
BGC : 0  
Deep : 0  
NAVO : 6

## In Motion

- *FRS Algoa – SAMBA*
- *AX97*

## Planned

- *RV Armstrong – AR94*
- *MV Bulk Xaymaca - RoCS*
- *Argentina*
- *R/V Brown – GOMECC*
- *R/V Brown – PNE*
- *R/V Brown – A16S*
- *Viking Sky*
- *RV Revelle – RR2602*
- *R/V Brown – STRATUS*
- *Le Commandant Charcut*
- *S.A. Agulhas II – Marion Island*
- *TSSOM – Summer Training Cruise 2026*
- *Arctic*
- *Folkor (too) – Travis Miles*

## Table of Contents

Atlantic Ocean.....	1
Indian/Southern Ocean.....	2
Pacific Ocean .....	3
Arctic Ocean .....	4
Table of Contents .....	5
Float Inventor .....	6
Deployment Reporting.....	8
SA Agulhas II – SAMBA – September 2025 .....	9
AX97 - 2025.....	10
RV Armstrong – AR94 – September 7, 2025 .....	11
MV Bulk Xaymaca - RoCS – November 9, 2025.....	12
Argentina Naval Hydrography Service - Austral Summer 2025/2026 .....	13
RV Brown - GOMECC : October/November 2025 .....	14
RV Brown - PNE2025 : October 2025.....	15
RV Brown - A16S : Nov 2025 .....	17
<i>Viking – Viking Sky</i> – December 19, 2025 (Proposed).....	19
<i>RV Revelle</i> – RR2602 - Brazilian Basin – March 7, 2025 .....	20
R/V Brown – STRATUS – March 13, 2026 .....	21
Ponant <i>Le Commandant Charcut</i> – March 17, 2025 (Proposed).....	22

R/V Agulhas II – Marion Island – April 2026 .....	23
TS State of Maine – Summer Training 2026 .....	24
R/V ??? – Arctic August 2026.....	25
R/V Folkor (too) – Travis Miles Cruise August 2026.....	26
.....	26
Atlantic Ocean Background/Supplemental Maps .....	27
Indian/Southern Ocean Background/Supplemental Maps .....	31
Pacific Ocean Background/Supplemental Maps.....	33
Arctic Ocean Background/Supplemental Maps .....	35
Listing of all planned deployment locations .....	36

## Float Inventor

WHOI Total: 119                      Core: 72            BGC: 27            Deep: 7            S2X: 6            NAVO: 6

*To be loaded in Cape Town, South Africa on the FRS Algoa for the SAMBA Cruise:*

6 WHOI Core floats:

Serial numbers: 2034,2035,2068,7482,7996,7998

*To be loaded in Brazil on the R/V xxxx for the AX97 cruise:*

4 WHOI Core floats:

Serial numbers: 2006,2032,2056,2060

*To be loaded in Woods Hole on the R/V Armstrong for the AR94 cruise:*

2 WHOI Deep floats:

Serial numbers: 12108, 12110

*To be loaded in New Orleans on the MV Bulk Xaymaca for the RoCS cruise to Jamaica:*

4 WHOI S2X floats:

Serial numbers: TBD

1 WHOI core float:

Serial number: TBD

*To be loaded in Argentina on the ARA Almirante Irizar for the LOAI-2026 cruise:*

10 WHOI core floats:

Serial numbers: TBD

*To be loaded in Port Everglades on the R/V Brown for the GOMECC cruise:*

2 WHOI S2X floats:

Serial numbers: TBD

1 WHOI Deep float:

Serial numbers: 12112

*To be loaded in Port Everglades on the R/V Brown for the PNE cruise:*

10 WHOI core floats:

Serial numbers: TBD

4 WHOI BGC floats:

Serial numbers: TBD

2 WHOI Deep floats:

Serial numbers: TBD

*To be loaded in Port Everglades on the R/V Brown for the A16S Cruise with PNE:*

12 WHOI BGC floats:

Serial numbers: TBD

2 WHOI Deep Solo floats:

Serial numbers: TBD

*To be loaded in Fort Lauderdale on the Viking Sky for the Atlantic Crossing from Aguilla:*

10 WHOI core floats:

Serial numbers: TBD

*To be loaded in Purta Arenas on the RV Revelle for the Brazilian Basin Cruise:*

10 WHOI core floats:

Serial numbers: TBD

*To be loaded in WHOI in a container for the R/V Brown for the STRATUS Cruise:*

4 WHOI core floats:

Serial numbers: TBD

*To be loaded in Cape Town, South Africa on the Ponant Le Commandant Charcut for the cruise from Cape Town to Brest:*

10 WHOI BGC floats:

Serial numbers: TBD

*To be loaded in Cape Town, South Africa on the R/V S.A. Agulhas II for the Marion Island Cruise:*

6 WHOI Core floats:

Serial numbers: TBD

*To be loaded in Castine, Maine on the TS State of Maine for the 2025 Training cruise:*

6 WHOI core floats:

Serial numbers: TBD

*To be loaded in XXX on the XXX for the cruise Arctic cruise:*

4 WHOI Alto floats:

Serial numbers: TBD

6 NAVO floats:

Serial numbers: TBD

*To be loaded in New Jersey in a container going to be loaded on the Folkor (too) for Travis Mile's cruise:*

4 WHOI Core floats:

Serial numbers: TBD

All floats are equivalent and interchangeable within Class. e.g. any WHOI S2a Core float is the same as other WHOI S2A Core floats, so it doesn't matter which specific float is deployed at each location – whichever is available (of appropriate type) at the top of the stack is fine.

### Deployment Reporting

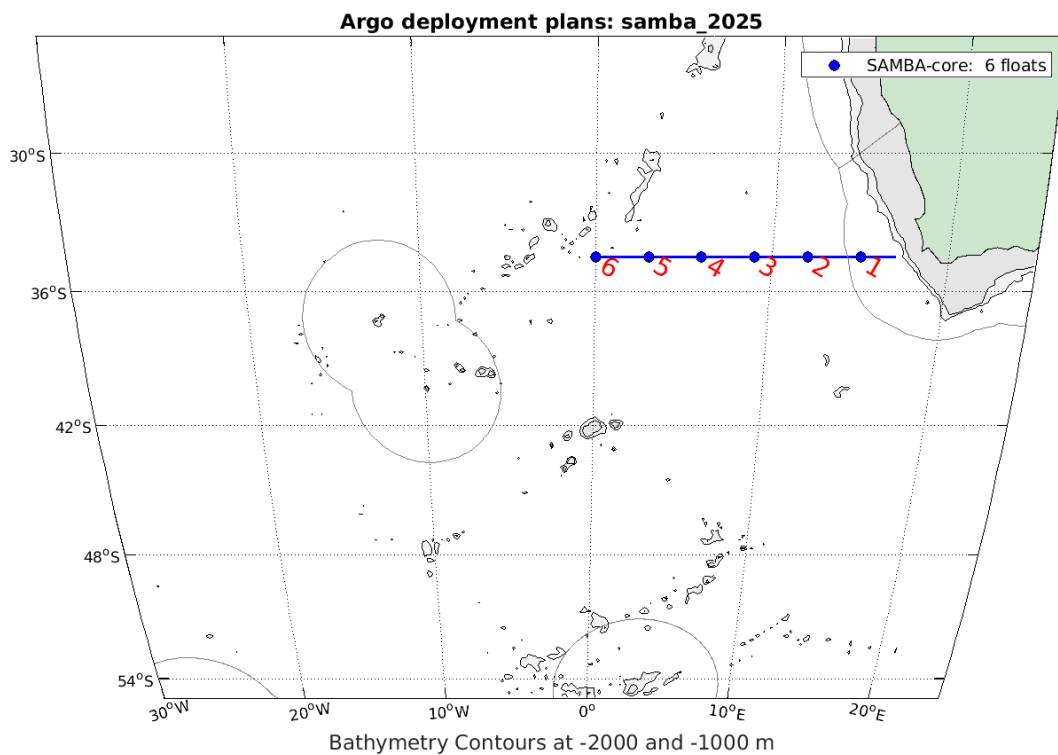
After Float deployment please report the following to [deploymentinfo@whoi.edu](mailto:deploymentinfo@whoi.edu)

1. Float #
2. Deployment Location (latitude and longitude)
3. Deployment Time (GMT)
4. Any issues or problems with the deployment water release, tangled lines, etc.

## SA Agulhas II – SAMBA – September 2025

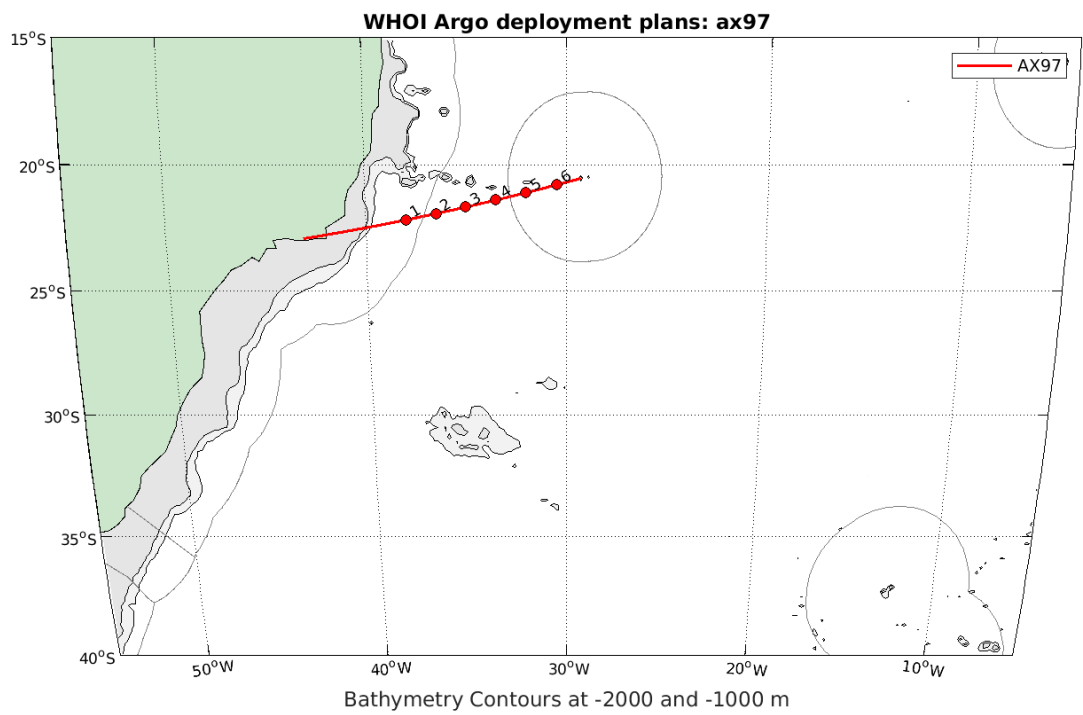
Index	Latitude	Longitude	Float Type	Comments
1	34.5° S	15.0° E	Core	Deploy by longitude
2	34.5° S	12.0° E	Core	
3	34.5° S	9.0° E	Core	
4	34.5° S	6.0° E	Core	
5	34.5° S	3.0° E	Core	
6	34.5° S	0.0° E	Core	

Note: Approximated cruise track.



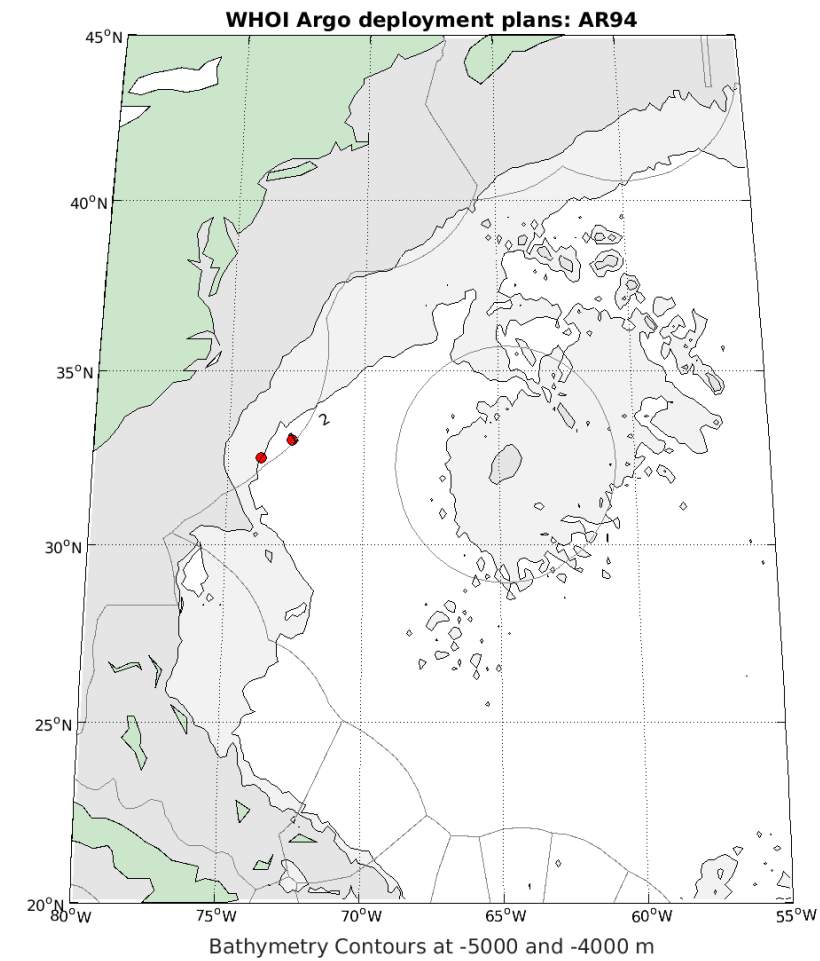
AX97 - 2025

Index	Latitude	Longitude	Float Type	Comments
1	22.19° S	38.00° W	Core	Deploy by longitude.
2	21.94° S	36.50° W	Core	
3	21.68° S	35.00° W	Core	
4	21.40° S	33.50° W	Core	
5	21.11° S	32.00° W	Core	
6	20.80° S	30.50° W	Core	



RV Armstrong – AR94 – September 7, 2025

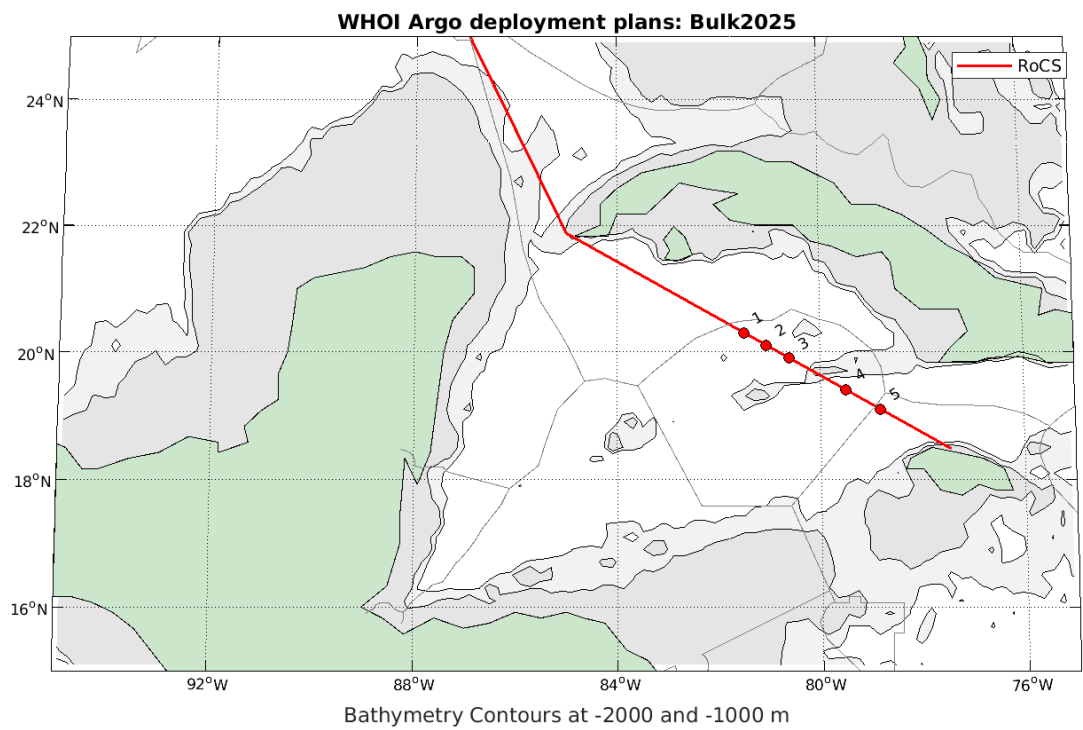
Index	Latitude	Longitude	Float Type	Comments
1	32.50° N	73.78° W	Deep	
2	33.01° N	72.65° W	Deep	



WHOI Argo:02-Sep-2025

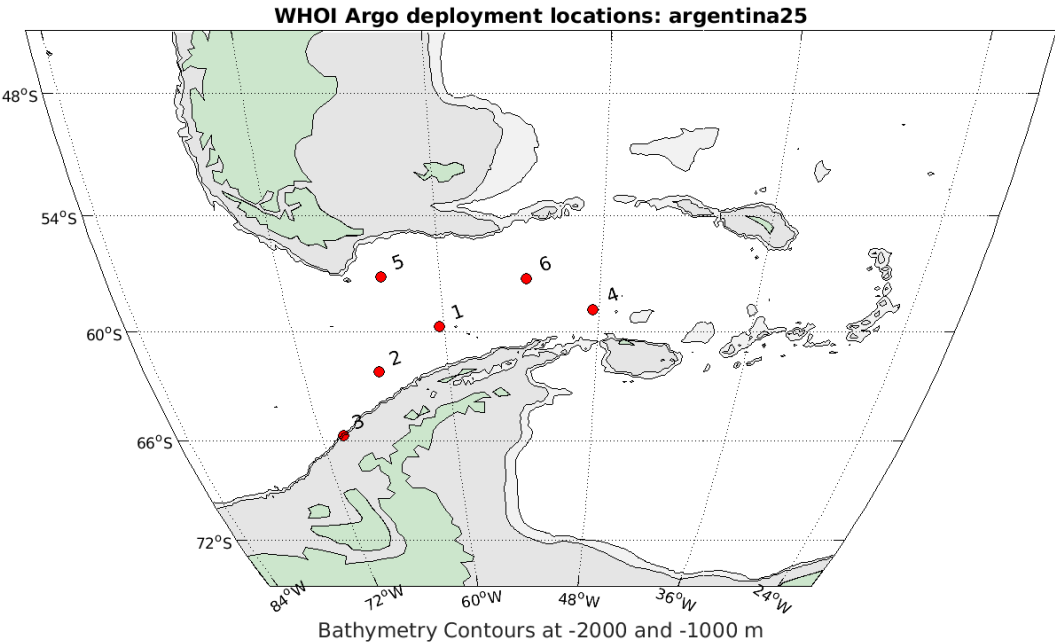
MV Bulk Xaymaca- RoCS – November 9, 2025

Index	Latitude	Longitude	Float Type	Comments
1	22.30° N	81.50° W	S2X	Deploy by latitude.
2	20.10° N	81.06° W	S2A core	
3	19.90° N	80.61° W	S2X	
4	19.40° N	79.50° W	S2X	
5	19.10° N	78.83° W	S2X	



Argentina Naval Hydrography Service- Austral Summer 2025/2026

Index	Latitude	Longitude	Float Type	Comments
1	59°41'20.33"S	60°22'56.25"W	Core	
2	62° 8'19.89"S	65°43'39.91"W	Core	
3	65°41'29.48"S	70° 7'44.48"W	Core	
4	58°49'11.36"S	48°30'36.90"W	Core	
5	57° 5'30.97"S	64°24'17.23"W	Core	
6	57°11'25.12"S	53°35'4.29"W	Core	



RV Brown - GOMECC : October/November 2025

Index	Latitude	Longitude	Float Type	Comments
1**	26.06° N	93.72° W	S2X	Station 72
2**	25.0° N	94.50° W	Deep	Between stations 73 and 75
3**	22.27° N	95.59° W	S2X	Station 82

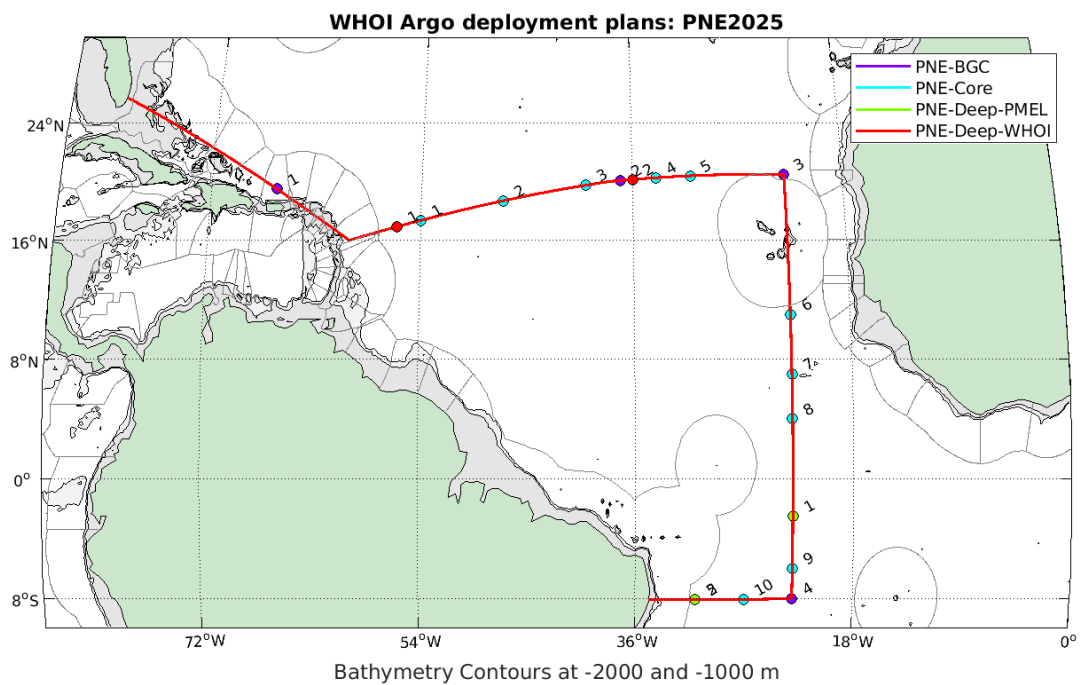
\*\*Needs Mexican clearance.



WHOI Argo:08-Sep-2025

## RV Brown - PNE2025 : October 2025

Index	Latitude	Longitude	Float Type	Comments
1	19.49° N	66.4° W	BGC	
2*	16.93° N	56.0° W	WHOI Deep	
3	17.36° N	54.0° W	Core	
4	18.69° N	47.0° W	Core	
5	19.75° N	40.0° W	Core	
6	20.07° N	37.0° W	BGC	
7*	20.14° N	36.0° W	WHOI Deep	
8	20.26° N	34.0° W	Core	
9	20.23° N	31.0° W	Core	
10	20.50° N	23.0° W	BGC	
11	11.0° N	23.0° W	Core	
12	7.0° N	23.0° W	Core	
13	4.0° N	23.0° W	Core	
14	2.50° S	23.0° W	PMEL Deep	
15	6.0° S	23.0° W	Core	
16	8.0° S	23.0° W	BGC	
17	8.06° S	27.0° W	Core	
18 / 19	8.09° S	31.0° W	PMEL Deep / BGC	

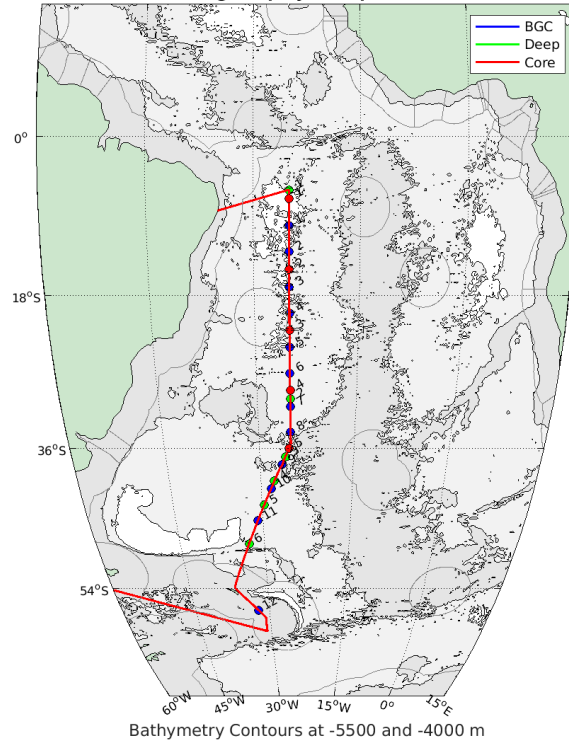


WHOI Argo:29-Aug-2025

## RV Brown - A16S : Nov 2025

Index	Latitude	Longitude	Float Type	Station
1	6.00° S	25.00° W	PMEL Deep	1
2	10.00° S	25.00° W	BGC	9
3	13.00° S	25.00° W	BGC	15
4	17.00° S	25.00° W	BGC	23
5	20.00° S	25.00° W	BGC	29
6	24.00° S	25.00° W	BGC	37
7	27.00° S	25.00° W	BGC	43
8	30.00° S	25.00° W	WHOI Deep	49
9	31.00° S	25.00° W	BGC	51
10	34.00° S	25.00° W	BGC	57
11	37.00° S	25.90° W	PMEL Deep	63
12	38.00° S	26.44° W	BGC	65
13	40.00° S	27.80° W	PMEL Deep	69
14	41.00° S	28.40° W	BGC	71
15	43.00° S	29.64° W	WHOI Deep	75
16	45.00° S	30.90° W	BGC	79
17	48.00° S	32.77° W	PMEL Deep	85
18	57.00° S	32.29° W	BGC	107

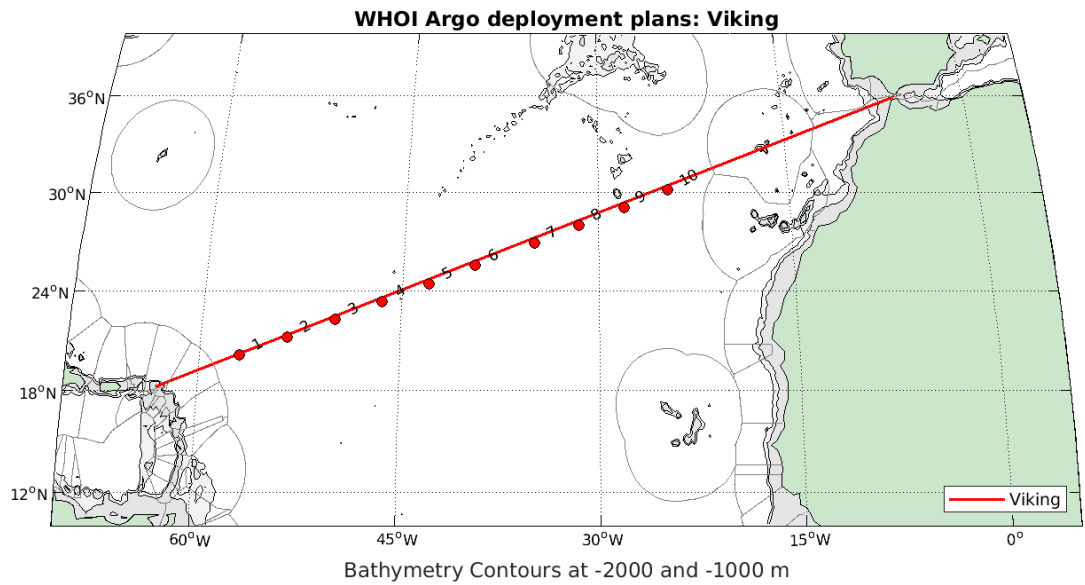
WHOI Argo deployment plans: a16sa



WHOI Argo:10-Sep-2024

Viking – Viking Sky – December 19, 2025 (Proposed)

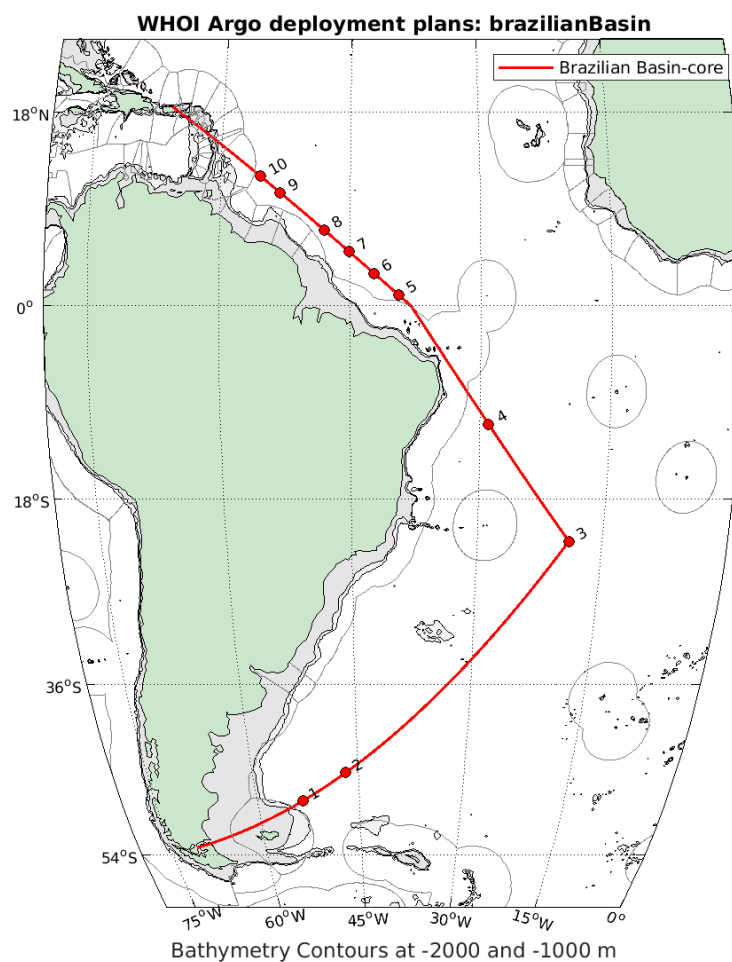
Index	Latitude	Longitude	Float Type	Comments
1	20.12° N	57.0° W	Core	Deploy by longitude.
2	21.20° N	53.5° W	Core	
3	22.28° N	50.0° W	Core	
4	23.36° N	46.5° W	Core	
5	24.43° N	43.0° W	Core	
6	25.51° N	39.5° W	Core	
7	26.90° N	35.0° W	Core	
8	27.98° N	31.5° W	Core	
9	29.06° N	28.0° W	Core	
10	30.13° N	24.5° W	Core	



## RV Revelle – RR2602- Brazilian Basin – March 7, 2025

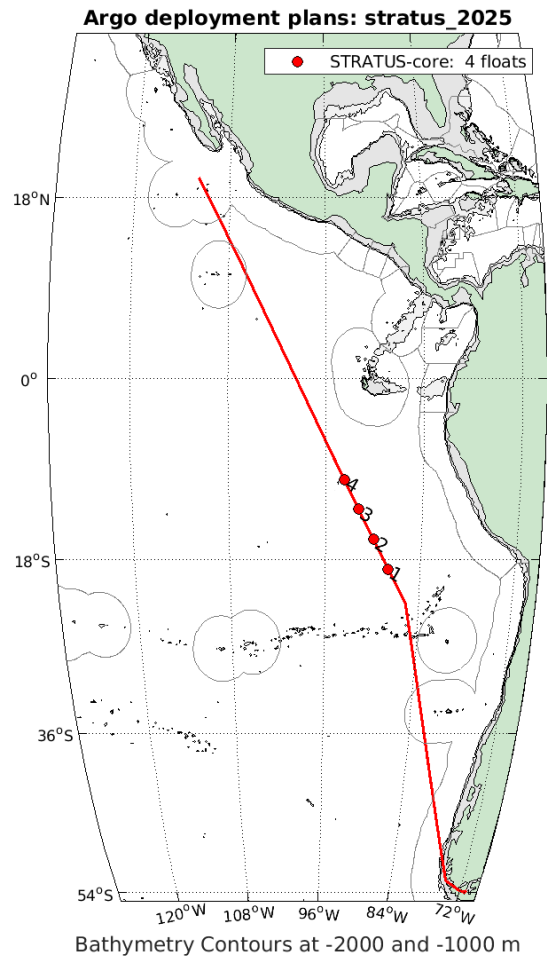
Index	Latitude	Longitude	Float Type	Comments
1	48.0° S	53.25° W	Core	Deploy by latitude.
2	45.0° S	46.74° W	Core	
3	22.0° S	19.0° W	Core	
4	11.0° S	28.99° W	Core	
5*	1.0° N	39.40° W	Core	
6*	3.0° N	42.22° W	Core	
7*	5.0° N	45.06° W	Core	
8*	7.0° N	47.93° W	Core	
9*	10.5° N	53.09° W	Core	
10*	12.0° N	55.37° W	Core	

\*Dependent upon ship sailing outside of Brazilian+ EEZs.



R/V Brown – STRATUS – March 13, 2026

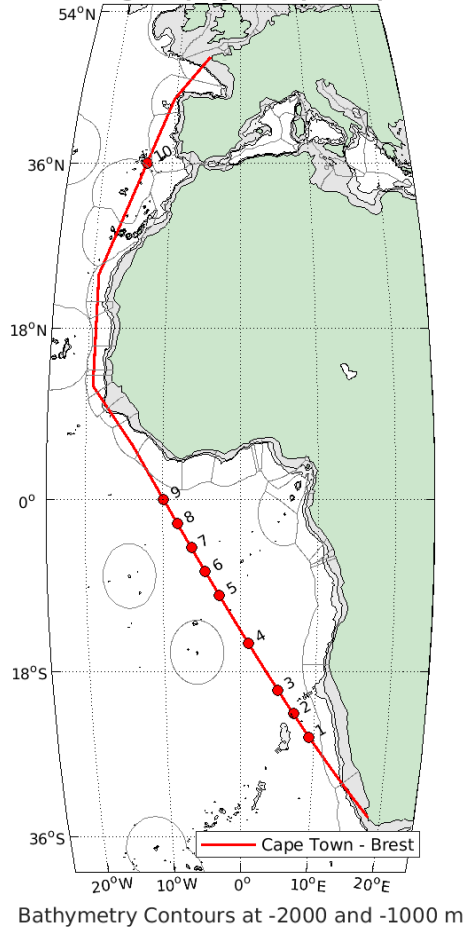
Index	Latitude	Longitude	Float Type	Comments
1	19.00° S	88.04° W	WHOI core	Deploy by latitude
2	16.00° S	90.01° W	WHOI core	
3	13.00° S	91.90° W	WHOI core	
4	10.00° N	93.75° W	WHOI core	



Ponant *Le Commandant Charcut* – March 17, 2025 (Proposed)

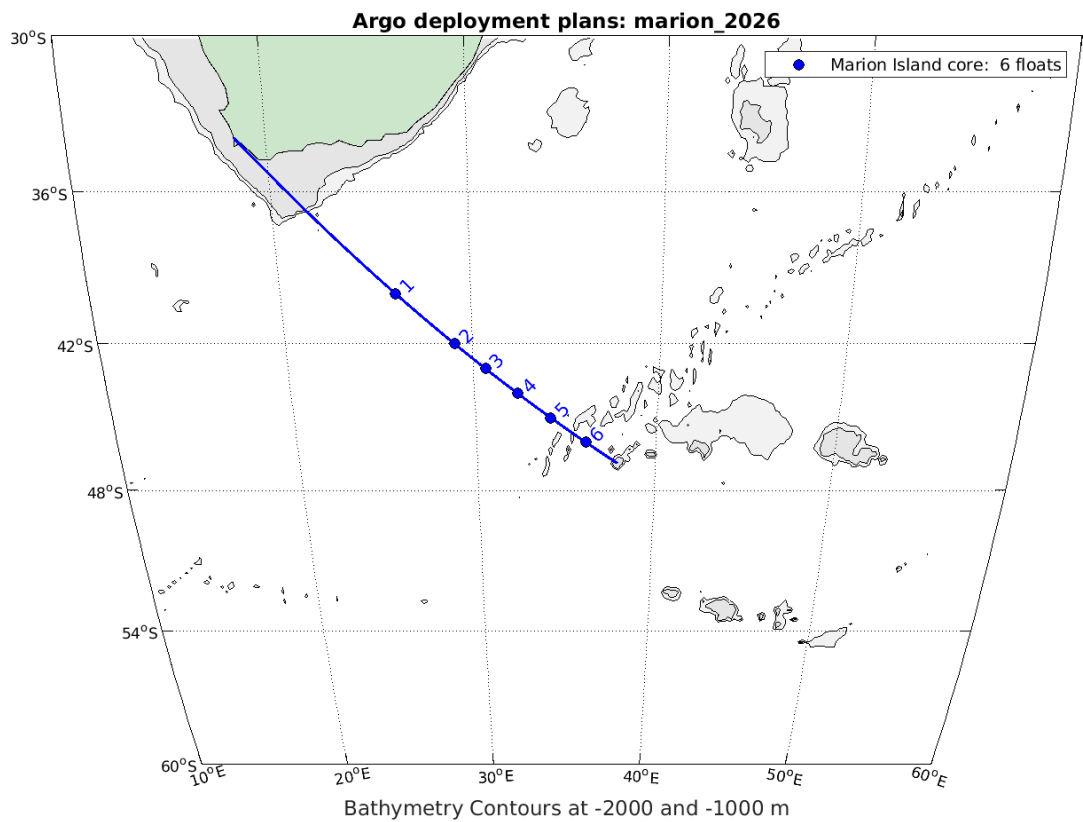
Index	Latitude	Longitude	Float Type	Comments
1	25.0° S	9.36° E	BGC	Deploy by latitude.
2	22.5° S	7.14° E	BGC	
3	20.0° S	5.03° E	BGC	
4	15.0° S	1.04° E	BGC	
5	10.0° S	2.72° W	BGC	
6	7.5° S	4.54° W	BGC	
7	5.0° S	6.33° W	BGC	
8	2.5° S	8.10° W	BGC	
9	0.0° S	9.87° W	BGC	
10	36.0° N	13.64° W	BGC	

WHOI Argo deployment plans: ponant



R/V Agulhas II – Marion Island – April 2026

Index	Latitude	Longitude	Float Type	Comments
1	40.0° S	26.06° E	Core	Deploy by latitude
2	42.0° S	29.03° E	Core	
3	43.0° S	30.64° E	Core	
4	44.0° S	32.34° E	Core	
5	45.0° S	34.14° E	Core	
6	46.0° S	36.07° E	Core	



## TS State of Maine – Summer Training 2026

Index	Latitude	Longitude	Float Type	Comments
1	° N	° W	Core	
2	° N	° W	Core	
3	° N	° W	Core	
4	° N	° W	Core	
5	° N	° W	Core	
6	° N	° W	Core	

\*Track not yet available.

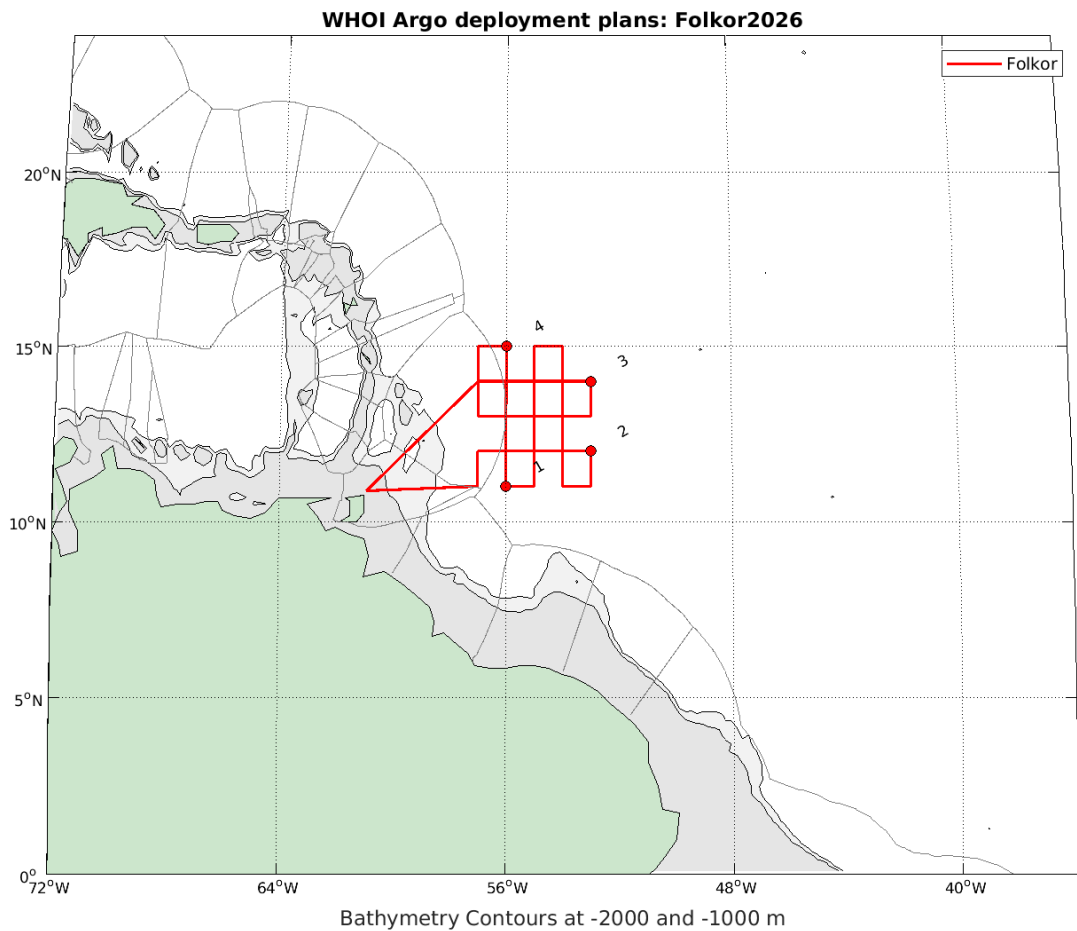
## R/V ??? – Arctic August 2026

Index	Latitude	Longitude	Float Type	Comments
1	° N	° W	Alto	
2	° N	° W	Alto	
3	° N	° W	Alto	
4	° N	° W	Alto	
5	° N	° W	NAVO	
6	° N	° W	NAVO	
7	° N	° W	NAVO	
8	° N	° W	NAVO	
9	° N	° W	NAVO	
10	° N	° W	NAVO	

\*Ship and track not yet available.

R/V Folkor (too) – Travis Miles Cruise August 2026

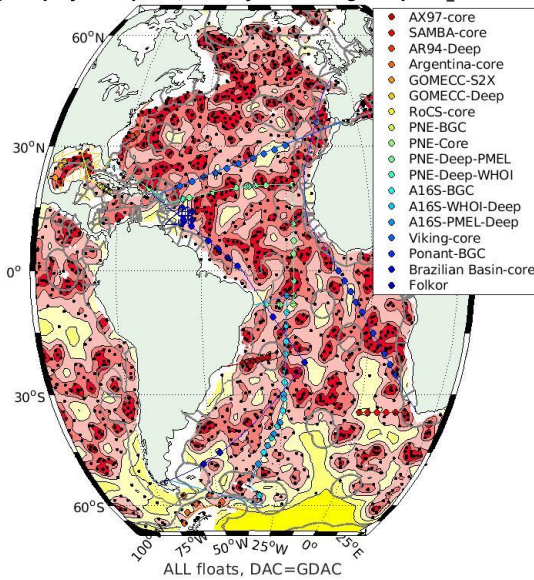
Index	Latitude	Longitude	Float Type	Comments
1	11.0° N	56.0° W	Core	
2	12.0° N	53.0° W	Core	
3	14.0° N	53.0° W	Core	
4	15.0° N	56.0° W	Core	



## Atlantic Ocean Background/Supplemental Maps

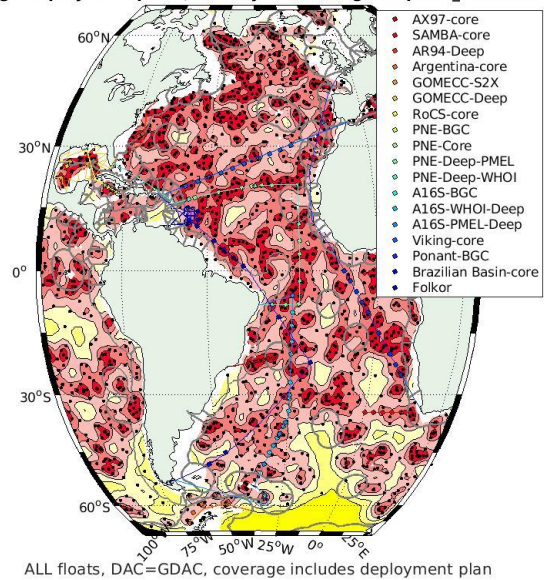
### All Floats (Coverage BEFORE/AFTER)

Argo deployment plans, overlay on coverage map: atl\_SEP2025



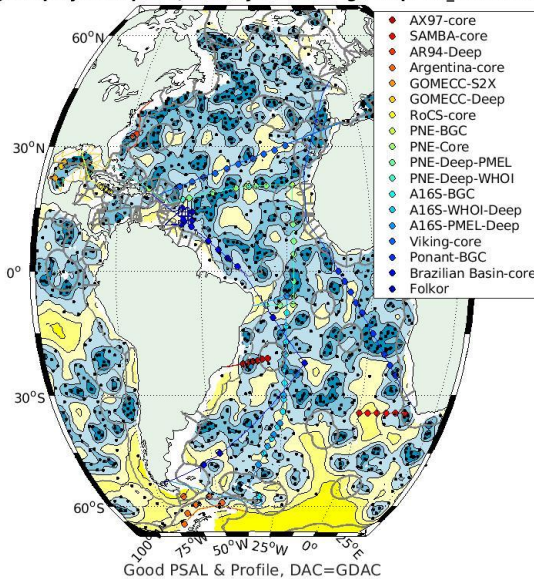
WHOI Argo:11-Sep-2025

Argo deployment plans, overlay on coverage map: atl\_SEP2025



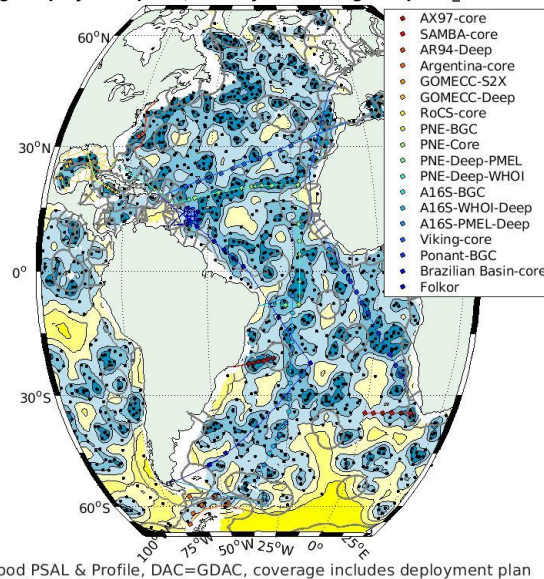
### Healthy (conductivity sensor) (Coverage BEFORE/AFTER)

Argo deployment plans, overlay on coverage map: atl\_SEP2025

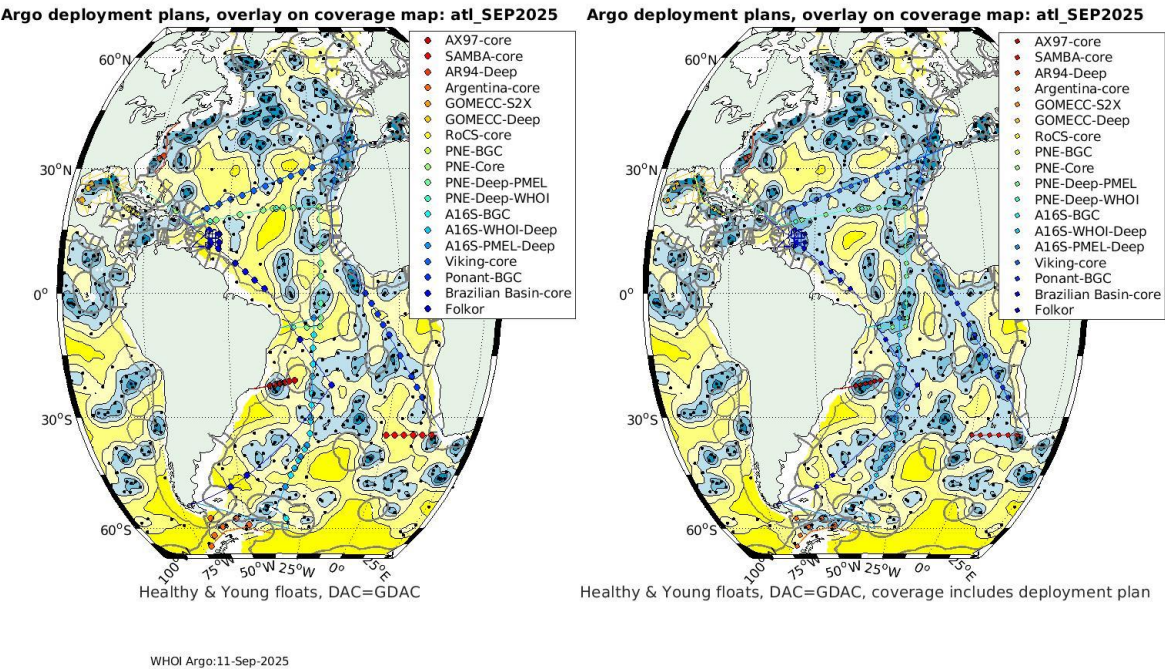


WHOI Argo:11-Sep-2025

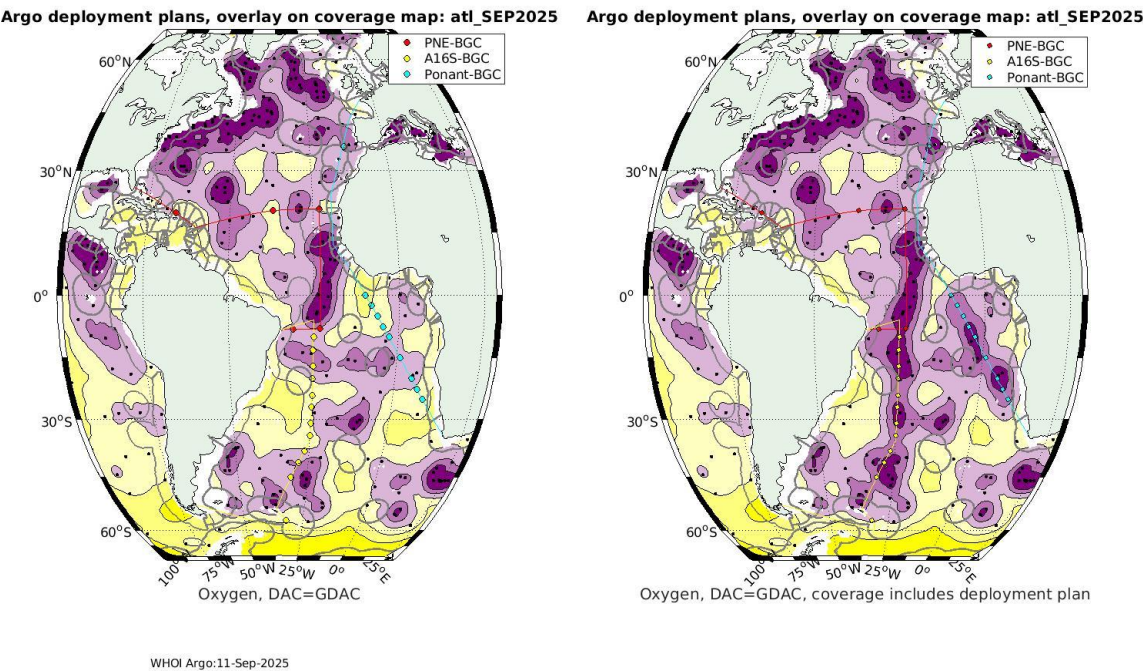
Argo deployment plans, overlay on coverage map: atl\_SEP2025



Healthy (conductivity sensor) & Young (Coverage BEFORE/AFTER)

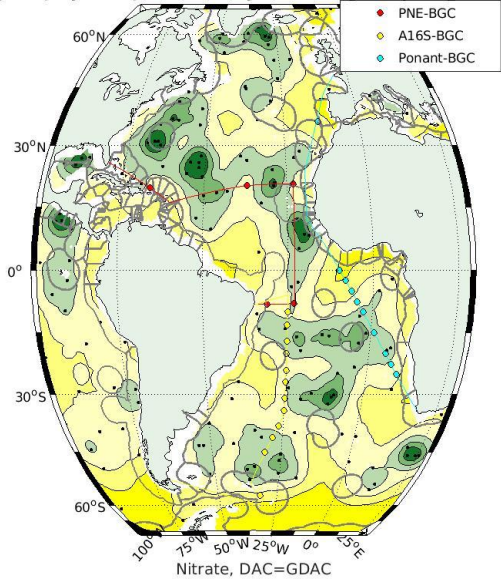


Oxygen (BEFORE/AFTER)



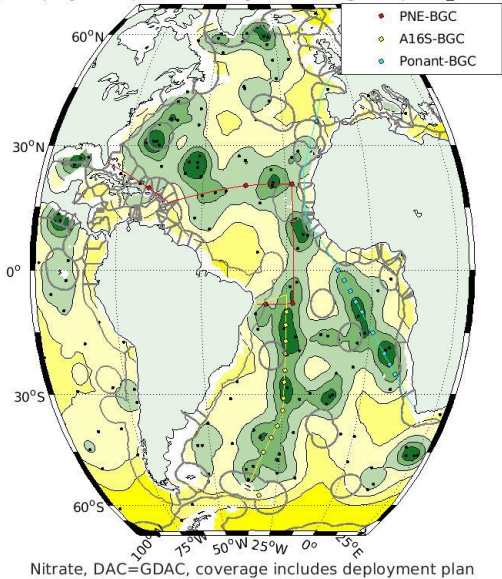
Nitrate (BEFORE/AFTER)

Argo deployment plans, overlay on coverage map: atl\_SEP2025



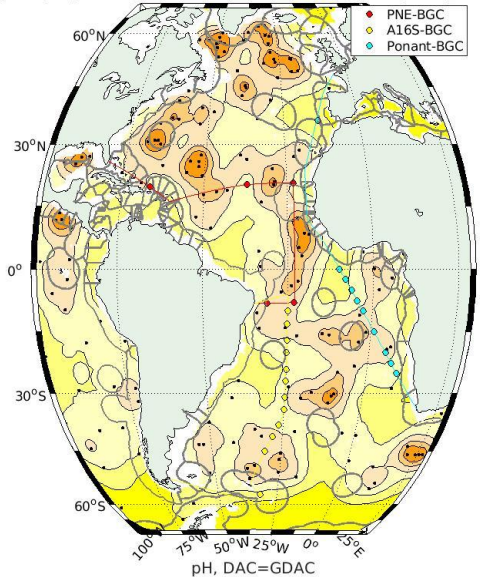
WHOI Argo:11-Sep-2025

Argo deployment plans, overlay on coverage map: atl\_SEP2025



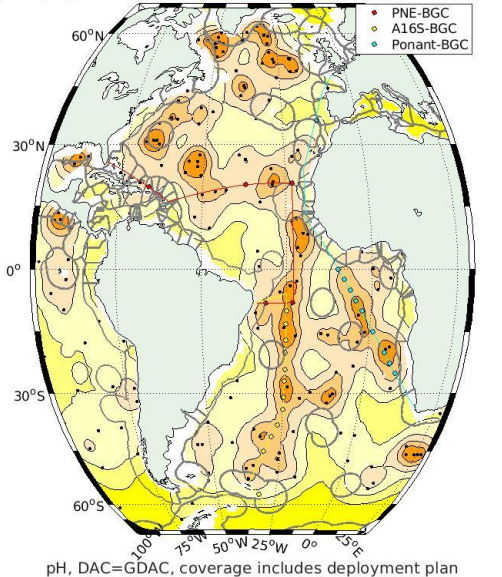
pH (BEFORE/AFTER)

Argo deployment plans, overlay on coverage map: atl\_SEP2025



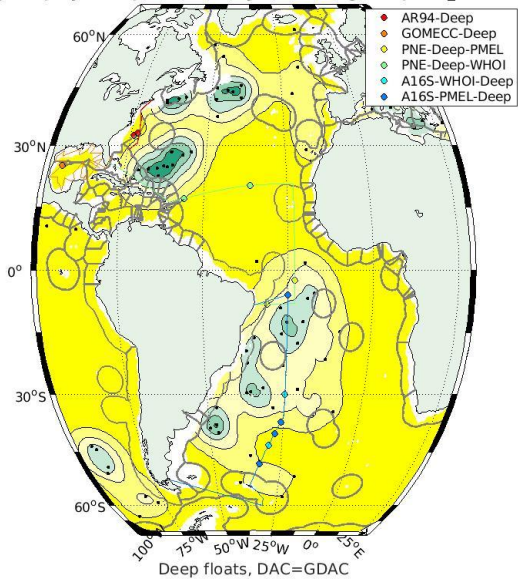
WHOI Argo:11-Sep-2025

Argo deployment plans, overlay on coverage map: atl\_SEP2025



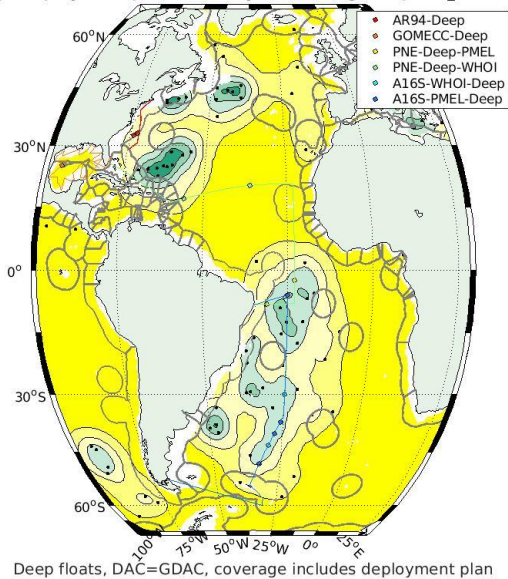
Deep (BEFORE/AFTER)

Argo deployment plans, overlay on coverage map: atl\_SEP2025



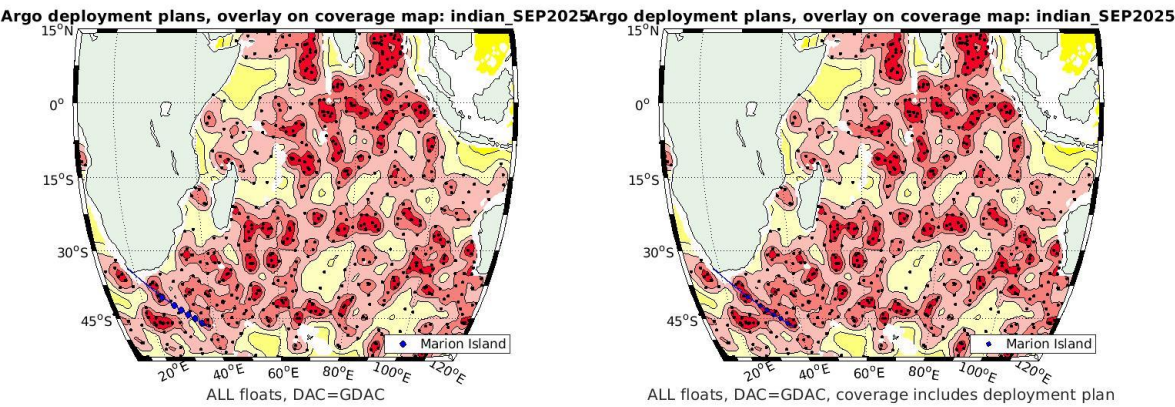
WHOI Argo:11-Sep-2025

Argo deployment plans, overlay on coverage map: atl\_SEP2025



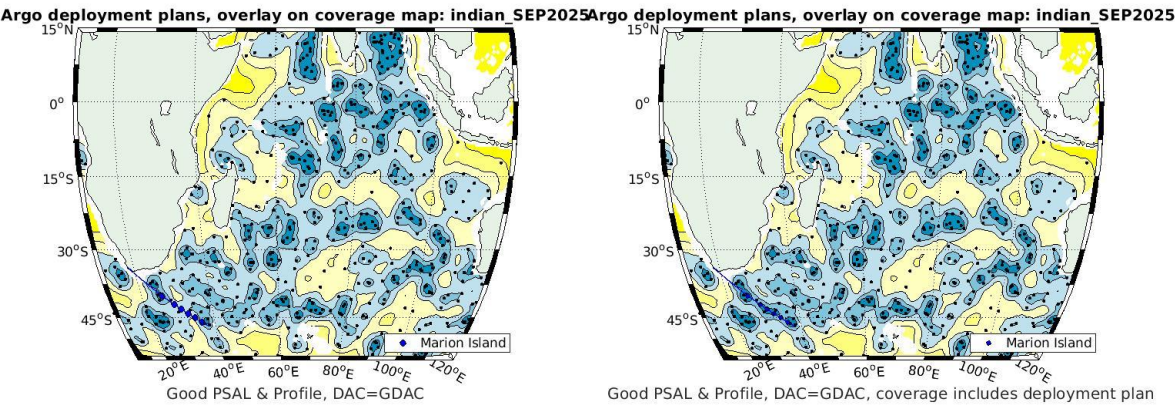
# Indian/Southern Ocean Background/Supplemental Maps

## All Floats (Coverage BEFORE/AFTER)



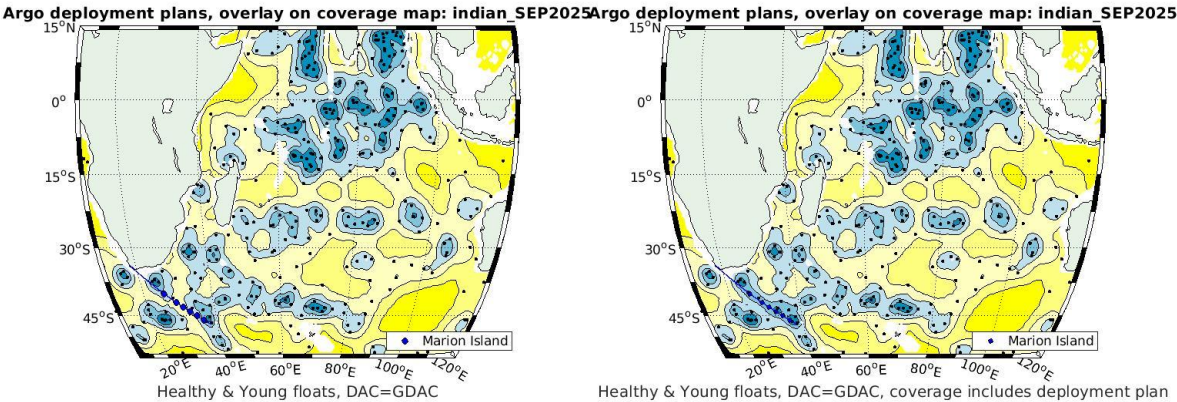
WHOI Argo:15-Sep-2025

## Healthy (conductivity sensor) (Coverage BEFORE/AFTER)



WHOI Argo:15-Sep-2025

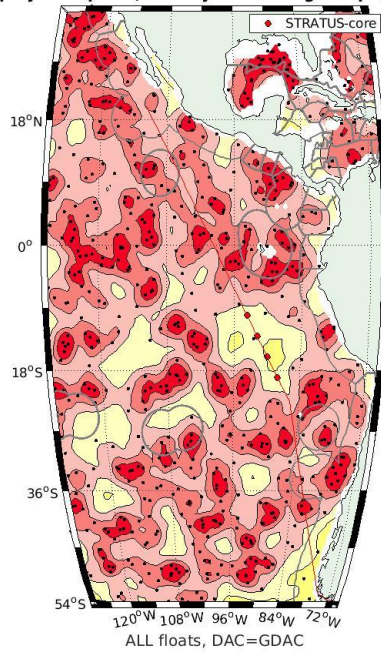
Healthy (conductivity sensor) & Young (Coverage BEFORE/AFTER)



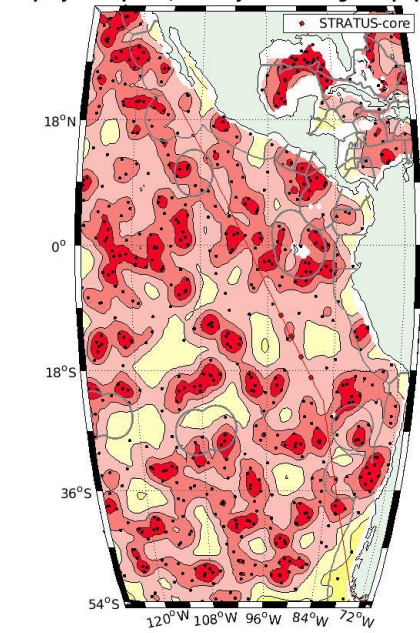
## Pacific Ocean Background/Supplemental Maps

### All Floats (Coverage BEFORE/AFTER)

Argo deployment plans, overlay on coverage map: pac\_fall\_2025

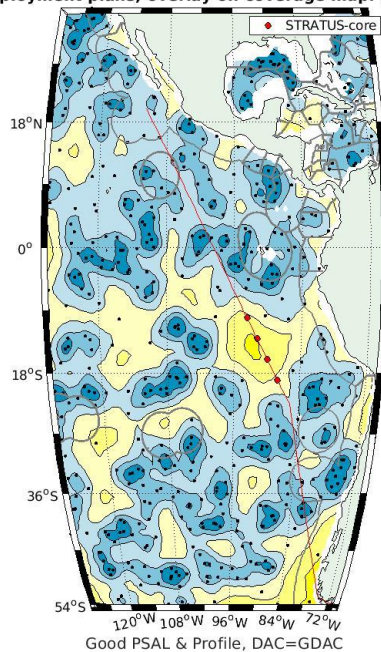


WHOI Argo:12-Sep-2025

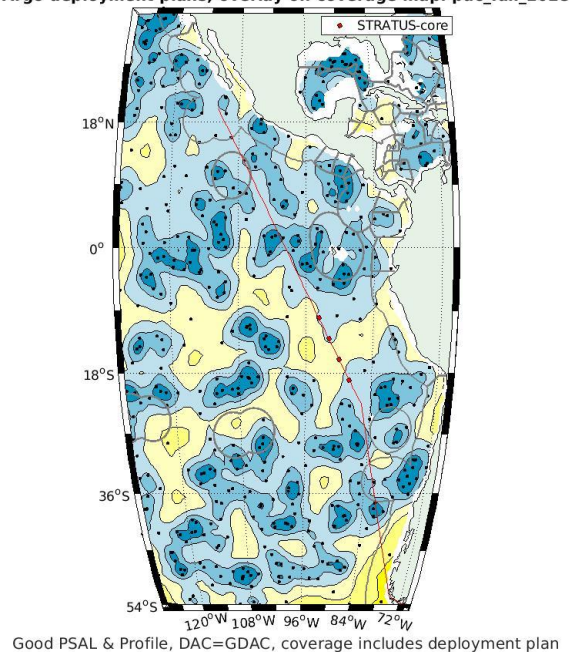


### Healthy (conductivity sensor) (Coverage BEFORE/AFTER)

Argo deployment plans, overlay on coverage map: pac\_fall\_2025

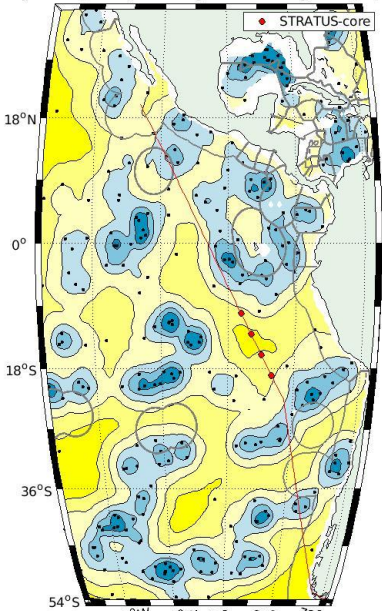


WHOI Argo:12-Sep-2025

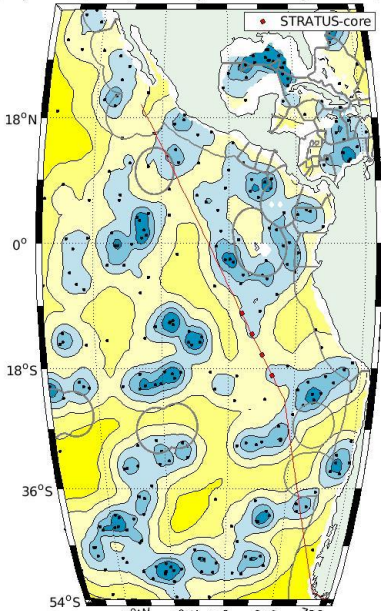


Healthy (conductivity sensor) & Young (Coverage BEFORE/AFTER)

Argo deployment plans, overlay on coverage map: pac\_fall\_2025



Healthy & Young floats, DAC=GDAC  
WHOI Argo:12-Sep-2025



Healthy & Young floats, DAC=GDAC, coverage includes deployment plan

## Arctic Ocean Background/Supplemental Maps

All Floats (Coverage BEFORE/AFTER)

Cruise track not yet available

Healthy (conductivity sensor) (Coverage BEFORE/AFTER)

Cruise track not yet available

Healthy (conductivity sensor) & Young (Coverage BEFORE/AFTER)

Cruise track not yet available

## Listing of all planned deployment locations

```
, "PROGRAM", "DEPLOYMENT_DATE", "DEPLOYMENT_LAT", "DEPLOYMENT_LON", "MODEL", "CRUISE", "SHIP"
1, "Argo WHOI", 04/15/26, -40, 26.058, "GENERIC CORE FLOAT", "Marion Island", "SA AGULHAS II"
2, "Argo WHOI", 04/15/26, -42, 29.033, "GENERIC CORE FLOAT", "Marion Island", "SA AGULHAS II"
3, "Argo WHOI", 04/15/26, -43, 30.639, "GENERIC CORE FLOAT", "Marion Island", "SA AGULHAS II"
4, "Argo WHOI", 04/15/26, -44, 32.339, "GENERIC CORE FLOAT", "Marion Island", "SA AGULHAS II"
5, "Argo WHOI", 04/15/26, -45, 34.145, "GENERIC CORE FLOAT", "Marion Island", "SA AGULHAS II"
6, "Argo WHOI", 04/15/26, -46, 36.072, "GENERIC CORE FLOAT", "Marion Island", "SA AGULHAS II"
7, "Argo WHOI", 10/01/25, -22.187, -38, "GENERIC CORE FLOAT", "AX97", "unknown"
8, "Argo WHOI", 10/01/25, -21.938, -36.5, "GENERIC CORE FLOAT", "AX97", "unknown"
9, "Argo WHOI", 10/01/25, -21.675, -35, "GENERIC CORE FLOAT", "AX97", "unknown"
10, "Argo WHOI", 10/01/25, -21.397, -33.5, "GENERIC CORE FLOAT", "AX97", "unknown"
11, "Argo WHOI", 10/01/25, -21.105, -32, "GENERIC CORE FLOAT", "AX97", "unknown"
12, "Argo WHOI", 10/01/25, -20.799, -30.5, "GENERIC CORE FLOAT", "AX97", "unknown"
13, "Argo WHOI", 10/01/25, -34.49, 15, "GENERIC CORE FLOAT", "SAMBA", "Algoa"
14, "Argo WHOI", 10/01/25, -34.49, 12, "GENERIC CORE FLOAT", "SAMBA", "Algoa"
15, "Argo WHOI", 10/01/25, -34.49, 9, "GENERIC CORE FLOAT", "SAMBA", "Algoa"
16, "Argo WHOI", 10/01/25, -34.49, 6, "GENERIC CORE FLOAT", "SAMBA", "Algoa"
17, "Argo WHOI", 10/01/25, -34.49, 3, "GENERIC CORE FLOAT", "SAMBA", "Algoa"
18, "Argo WHOI", 10/01/25, -34.49, 0, "GENERIC CORE FLOAT", "SAMBA", "Algoa"
19, "Argo WHOI", 09/15/25, 32.495, -73.78, "GENERIC DEEP FLOAT", "AR94", "Armstrong"
20, "Argo WHOI", 09/15/25, 33.011, -72.65, "GENERIC DEEP FLOAT", "AR94", "Armstrong"
21, "Argo WHOI", 12/15/25, -59.689, -60.382, "GENERIC CORE FLOAT", "Argentina", "NHS"
22, "Argo WHOI", 12/15/25, -62.139, -65.728, "GENERIC CORE FLOAT", "Argentina", "NHS"
23, "Argo WHOI", 12/15/25, -65.686, -70.002, "GENERIC CORE FLOAT", "Argentina", "NHS"
24, "Argo WHOI", 12/15/25, -58.82, -48.51, "GENERIC CORE FLOAT", "Argentina", "NHS"
25, "Argo WHOI", 12/15/25, -57.092, -64.405, "GENERIC CORE FLOAT", "Argentina", "NHS"
26, "Argo WHOI", 12/15/25, -57.19, -53.585, "GENERIC CORE FLOAT", "Argentina", "NHS"
27, "Argo WHOI", 10/19/25, 26.058, -93.723, "GENERIC CORE FLOAT", "GOMECC", "Brown"
28, "Argo WHOI", 10/19/25, 22.274, -95.59, "GENERIC CORE FLOAT", "GOMECC", "Brown"
29, "Argo WHOI", 10/19/25, 25, -94.5, "GENERIC DEEP FLOAT", "GOMECC", "Brown"
30, "Argo WHOI", 10/01/25, 20.3, -81.503, "GENERIC CORE FLOAT", "RoCS", "Bulk Xaymaca"
31, "Argo WHOI", 10/01/25, 19.9, -80.613, "GENERIC CORE FLOAT", "RoCS", "Bulk Xaymaca"
32, "Argo WHOI", 10/01/25, 19.4, -79.499, "GENERIC CORE FLOAT", "RoCS", "Bulk Xaymaca"
33, "Argo WHOI", 10/01/25, 19.1, -78.831, "GENERIC CORE FLOAT", "RoCS", "Bulk Xaymaca"
34, "Argo WHOI", 10/01/25, 18.8, -78.163, "GENERIC CORE FLOAT", "RoCS", "Bulk Xaymaca"
35, "Argo WHOI", 11/25/25, 19.492, -66.4, "GENERIC BGC FLOAT", "PNE", "Brown"
36, "Argo WHOI", 11/25/25, 20.073, -37, "GENERIC BGC FLOAT", "PNE", "Brown"
37, "Argo WHOI", 11/25/25, 20.5, -23.01, "GENERIC BGC FLOAT", "PNE", "Brown"
38, "Argo WHOI", 11/25/25, -8, -23.01, "GENERIC BGC FLOAT", "PNE", "Brown"
39, "Argo WHOI", 11/25/25, -8.09, -31, "GENERIC BGC FLOAT", "PNE", "Brown"
40, "Argo WHOI", 11/25/25, 17.357, -54, "GENERIC CORE FLOAT", "PNE", "Brown"
41, "Argo WHOI", 11/25/25, 18.691, -47, "GENERIC CORE FLOAT", "PNE", "Brown"
42, "Argo WHOI", 11/25/25, 19.749, -40, "GENERIC CORE FLOAT", "PNE", "Brown"
43, "Argo WHOI", 11/25/25, 20.259, -34, "GENERIC CORE FLOAT", "PNE", "Brown"
44, "Argo WHOI", 11/25/25, 20.393, -31, "GENERIC CORE FLOAT", "PNE", "Brown"
45, "Argo WHOI", 11/25/25, 11, -23, "GENERIC CORE FLOAT", "PNE", "Brown"
46, "Argo WHOI", 11/25/25, 7, -23, "GENERIC CORE FLOAT", "PNE", "Brown"
47, "Argo WHOI", 11/25/25, 4, -23, "GENERIC CORE FLOAT", "PNE", "Brown"
48, "Argo WHOI", 11/25/25, -6, -23, "GENERIC CORE FLOAT", "PNE", "Brown"
49, "Argo WHOI", 11/25/25, -8.064, -27, "GENERIC CORE FLOAT", "PNE", "Brown"
50, "Argo WHOI", 11/25/25, 16.926, -56, "GENERIC DEEP FLOAT", "PNE", "Brown"
51, "Argo WHOI", 11/25/25, 20.141, -36, "GENERIC DEEP FLOAT", "PNE", "Brown"
52, "Argo WHOI", 01/15/26, -10, -25, "GENERIC BGC FLOAT", "A16S", "Brown"
53, "Argo WHOI", 01/15/26, -13, -25, "GENERIC BGC FLOAT", "A16S", "Brown"
54, "Argo WHOI", 01/15/26, -17, -25, "GENERIC BGC FLOAT", "A16S", "Brown"
55, "Argo WHOI", 01/15/26, -20, -24.998, "GENERIC BGC FLOAT", "A16S", "Brown"
56, "Argo WHOI", 01/15/26, -24, -25, "GENERIC BGC FLOAT", "A16S", "Brown"
57, "Argo WHOI", 01/15/26, -27, -25, "GENERIC BGC FLOAT", "A16S", "Brown"
58, "Argo WHOI", 01/15/26, -31, -25, "GENERIC BGC FLOAT", "A16S", "Brown"
59, "Argo WHOI", 01/15/26, -34, -25, "GENERIC BGC FLOAT", "A16S", "Brown"
60, "Argo WHOI", 01/15/26, -38, -26.439, "GENERIC BGC FLOAT", "A16S", "Brown"
61, "Argo WHOI", 01/15/26, -41, -28.398, "GENERIC BGC FLOAT", "A16S", "Brown"
62, "Argo WHOI", 01/15/26, -45, -30.904, "GENERIC BGC FLOAT", "A16S", "Brown"
```

63,"Argo WHOI",01/15/26,-57,-32.286,"GENERIC BGC FLOAT","Al6S","Brown"  
64,"Argo WHOI",01/15/26,-30,-24.998,"GENERIC DEEP FLOAT","Al6S","Brown"  
65,"Argo WHOI",01/15/26,-43,-29.642,"GENERIC DEEP FLOAT","Al6S","Brown"  
66,"Argo WHOI",12/19/25,20.121,-57,"GENERIC CORE FLOAT","Viking","Viking Sky"  
67,"Argo WHOI",12/19/25,21.199,-53.5,"GENERIC CORE FLOAT","Viking","Viking Sky"  
68,"Argo WHOI",12/19/25,22.278,-50,"GENERIC CORE FLOAT","Viking","Viking Sky"  
69,"Argo WHOI",12/19/25,23.356,-46.5,"GENERIC CORE FLOAT","Viking","Viking Sky"  
70,"Argo WHOI",12/19/25,24.434,-43,"GENERIC CORE FLOAT","Viking","Viking Sky"  
71,"Argo WHOI",12/19/25,25.513,-39.5,"GENERIC CORE FLOAT","Viking","Viking Sky"  
72,"Argo WHOI",12/19/25,26.899,-35,"GENERIC CORE FLOAT","Viking","Viking Sky"  
73,"Argo WHOI",12/19/25,27.977,-31.5,"GENERIC CORE FLOAT","Viking","Viking Sky"  
74,"Argo WHOI",12/19/25,29.056,-28,"GENERIC CORE FLOAT","Viking","Viking Sky"  
75,"Argo WHOI",12/19/25,30.134,-24.5,"GENERIC CORE FLOAT","Viking","Viking Sky"  
76,"Argo WHOI",03/17/25,-25,9.36,"GENERIC BGC FLOAT","Ponant","Le Commandant Charcut"  
77,"Argo WHOI",03/17/25,-22.5,7.141,"GENERIC BGC FLOAT","Ponant","Le Commandant Charcut"  
78,"Argo WHOI",03/17/25,-20,5.026,"GENERIC BGC FLOAT","Ponant","Le Commandant Charcut"  
79,"Argo WHOI",03/17/25,-15,1.039,"GENERIC BGC FLOAT","Ponant","Le Commandant Charcut"  
80,"Argo WHOI",03/17/25,-10,-2.717,"GENERIC BGC FLOAT","Ponant","Le Commandant Charcut"  
81,"Argo WHOI",03/17/25,-7.5,-4.536,"GENERIC BGC FLOAT","Ponant","Le Commandant Charcut"  
82,"Argo WHOI",03/17/25,-5,-6.329,"GENERIC BGC FLOAT","Ponant","Le Commandant Charcut"  
83,"Argo WHOI",03/17/25,-2.5,-8.104,"GENERIC BGC FLOAT","Ponant","Le Commandant Charcut"  
84,"Argo WHOI",03/17/25,0,-9.872,"GENERIC BGC FLOAT","Ponant","Le Commandant Charcut"  
85,"Argo WHOI",03/17/25,36,-13.636,"GENERIC BGC FLOAT","Ponant","Le Commandant Charcut"  
86,"Argo WHOI",03/07/26,-48,-53.251,"GENERIC CORE FLOAT","Brazilian Basin","Revelle"  
87,"Argo WHOI",03/07/26,-45,-46.744,"GENERIC CORE FLOAT","Brazilian Basin","Revelle"  
88,"Argo WHOI",03/07/26,-22,-19,"GENERIC CORE FLOAT","Brazilian Basin","Revelle"  
89,"Argo WHOI",03/07/26,-11,-28.988,"GENERIC CORE FLOAT","Brazilian Basin","Revelle"  
90,"Argo WHOI",03/07/26,1,-39.405,"GENERIC CORE FLOAT","Brazilian Basin","Revelle"  
91,"Argo WHOI",03/07/26,3,-42.221,"GENERIC CORE FLOAT","Brazilian Basin","Revelle"  
92,"Argo WHOI",03/07/26,5,-45.059,"GENERIC CORE FLOAT","Brazilian Basin","Revelle"  
93,"Argo WHOI",03/07/26,7,-47.931,"GENERIC CORE FLOAT","Brazilian Basin","Revelle"  
94,"Argo WHOI",03/07/26,10.5,-53.089,"GENERIC CORE FLOAT","Brazilian Basin","Revelle"  
95,"Argo WHOI",03/07/26,12,-55.371,"GENERIC CORE FLOAT","Brazilian Basin","Revelle"  
96,"Argo WHOI",08/01/26,11,-56,"GENERIC CORE FLOAT","Folkor","Folkor"  
97,"Argo WHOI",08/01/26,12,-53,"GENERIC CORE FLOAT","Folkor","Folkor"  
98,"Argo WHOI",08/01/26,14,-53,"GENERIC CORE FLOAT","Folkor","Folkor"  
99,"Argo WHOI",08/01/26,15,-56,"GENERIC CORE FLOAT","Folkor","Folkor"  
100,"Argo WHOI",01/21/25,-19,-88.039,"GENERIC CORE FLOAT","STRATUS","Brown"  
101,"Argo WHOI",01/21/25,-16,-90.007,"GENERIC CORE FLOAT","STRATUS","Brown"  
102,"Argo WHOI",01/21/25,-13,-91.905,"GENERIC CORE FLOAT","STRATUS","Brown"  
103,"Argo WHOI",01/21/25,-10,-93.75,"GENERIC CORE FLOAT","STRATUS","Brown"