

R/V S.A. Agulhas II – Gough Island Cruise 2023
R/V Laura Bassi – Indian Ocean Transit 2023
R/V Cabo de Hornos – STRATUS Cruise December 2023
R/V Packard – Transit Cruise 2024
R/V Langseth – A13.5 Cruise 2024
OneArgo Deployment Plan
Version A, September 28, 2023

Table of Contents

| | |
|---|----|
| Table of Contents | 1 |
| Float Inventory | 1 |
| Deployment Reporting | 2 |
| Gough Island Cruise 2023..... | 3 |
| Indian Ocean Transit 2023 | 4 |
| STRATUS Cruise December 2023 | 5 |
| Packard Transit Cruise 2024 | 6 |
| A13.5 Cruise 2024 | 7 |
| Background/Supplemental Maps | 9 |
| Listing of all planned deployment locations | 12 |

Contacts: Deb West-Mack (dwest@whoi.edu), Pelle Robbins (probbins@whoi.edu), Aidan Thayer (aidan.thayer@whoi.edu), Rick Rupan (rupan@uw.edu)

Float Inventory

Loaded in Cape Town, South Africa on the R/V Agulhas II for the Gough Island Cruise:

6 WHOI MRV S2a Core floats:

Serial numbers: 7780, 7864, 7865, 7867, 7876, 7881
(7864 and 7881 deployed as of Sept. 18, 2023)

To be loaded in Trieste, Italy on the R/V Laura Bassi for the Transit Cruise:

7 WHOI MRV S2a Core floats:

Serial numbers: 7782, 7818, 7819, 7821, 7822, 7825, 7868

1 WHOI MRV Alto-RBR Core float:

Serial number: 11332

To be loaded in Valparaiso, Chile on the R/V Cabo de Hornos for the STRATUS Cruise:

3 WHOI MRV S2a Core floats:

Serial numbers: 7820, 7823, 7824

1 WHOI MRV Alto-RBR Core float:

Serial number: 11333

To be loaded in Vigo, Spain on the R/V Packard for the Transit Cruise:

2 WHOI MRV Alto-RBR Core floats:

Serial numbers: TBD

4 WHOI Navis BGC floats:

Serial numbers: TBD

To be loaded in Cape Canaveral, FL on the R/V Langseth for the GO-SHIP A13.5 Cruise:

3 WHOI MRV S2a Core floats:

Serial numbers: TBD

1 WHOI MRV Alto-RBR Core float:

Serial number: TBD

1 WHOI MRV Deep Solo float:

Serial number: 12070

10 WHOI Navis BGC floats:

Serial numbers: TBD

All floats are equivalent and interchangeable within Class. E.G. any WHOI S2a Core float is the same as other WHOI S2a Core floats so it doesn't matter which specific float is deployed at each location – whichever is available (of appropriate type) at the top of the stack is fine.

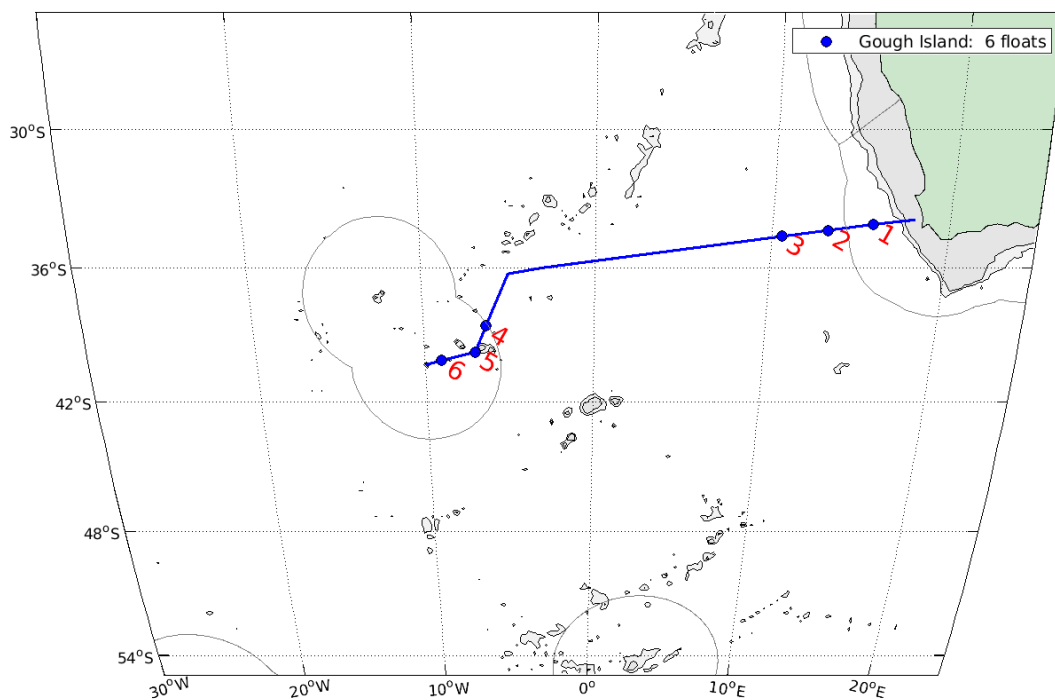
Deployment Reporting

After Float deployment please report the following to deploymentinfo@whoi.edu

1. Float #
2. Deployment Location (latitude and longitude)
3. Deployment Time (GMT)
4. Any issues or problems with the deployment water release, tangled lines, etc.

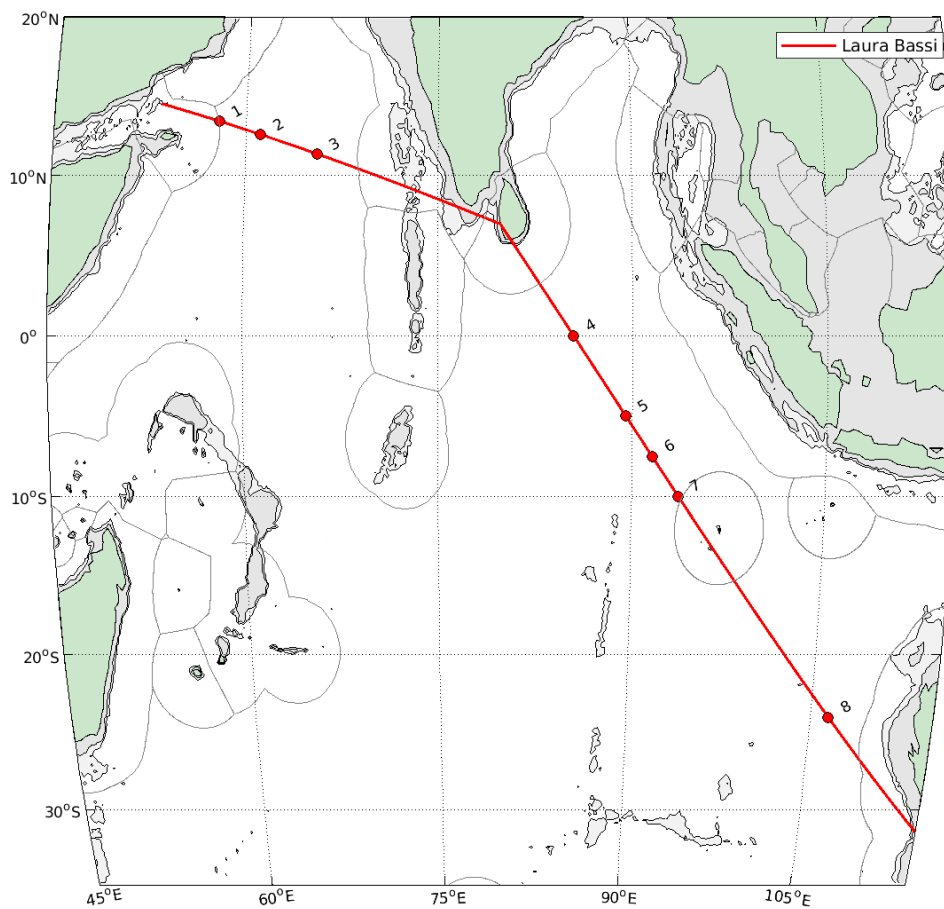
Gough Island Cruise 2023

| Index | Latitude | Longitude | Float Type | Float Number |
|-------|----------|-----------|---------------|----------------|
| 1 | -34.100 | 15.666 | WHOI S2a Core | 7881 |
| 2 | -34.359 | 13.121 | WHOI S2a Core | 7864 |
| 3 | -34.618 | 10.575 | WHOI S2a Core | 7865 (missing) |
| 4 | -38.583 | -6.333 | WHOI S2a Core | 7780 |
| 5 | -39.750 | -7.000 | WHOI S2a Core | 7867 |
| 6 | -40.120 | -9.000 | WHOI S2a Core | 7876 |



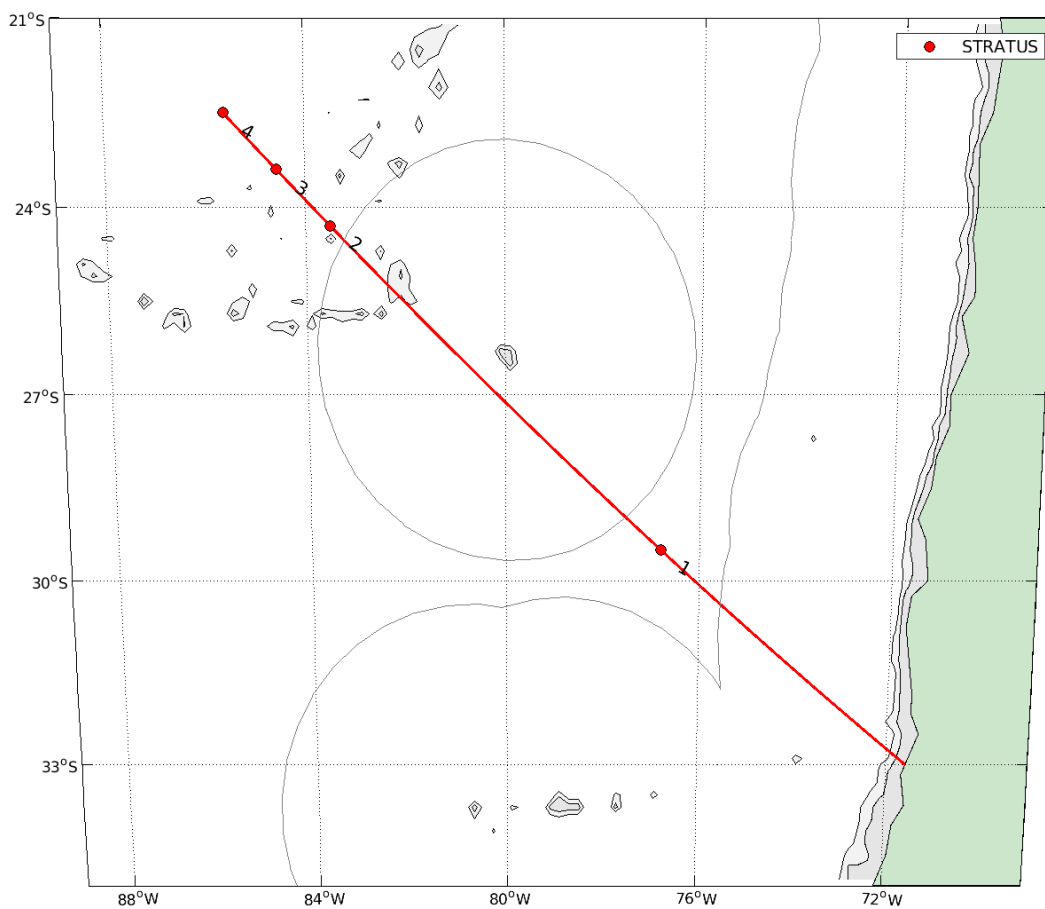
Indian Ocean Transit 2023

| Index | Latitude | Longitude | Float Type | Float Number |
|-------|----------|-----------|---------------|--------------|
| 1 | 13.400 | 57.886 | WHOI S2a Core | |
| 2 | 12.560 | 61.150 | WHOI S2a Core | |
| 2 | 11.340 | 65.607 | WHOI S2a Core | |
| 4 | Equator | 85.469 | WHOI RBR Core | 11332 |
| 5 | -5.000 | 89.506 | WHOI S2a Core | |
| 6 | -7.500 | 91.550 | WHOI S2a Core | |
| 7 | -10.000 | 93.626 | WHOI S2a Core | |
| 8 | -24.000 | 106.463 | WHOI S2a Core | |



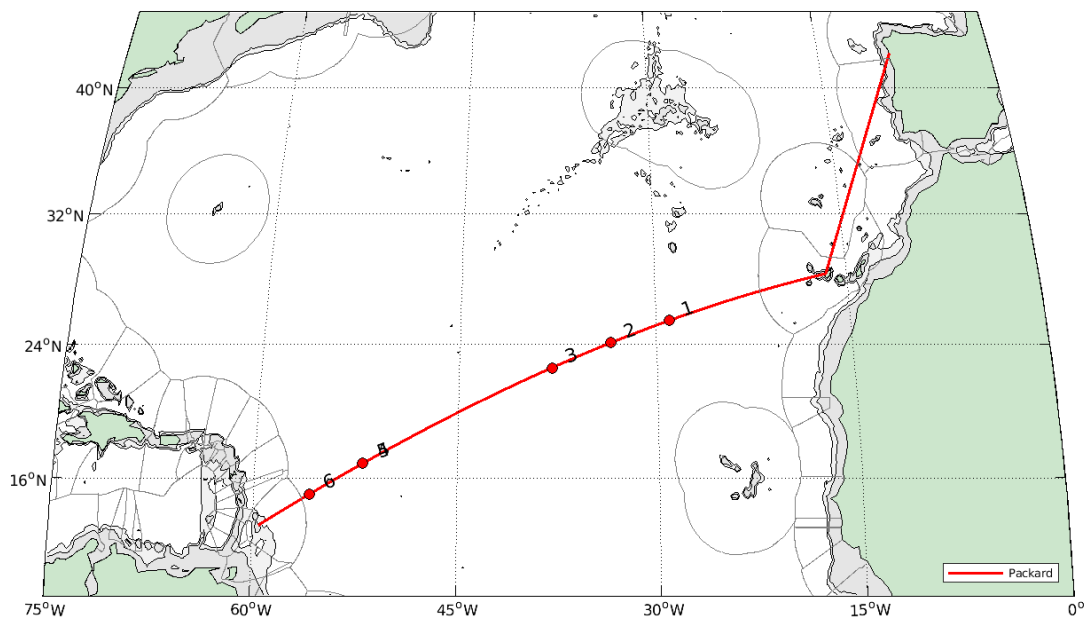
STRATUS Cruise December 2023

| Index | Latitude | Longitude | Float Type | Float Number |
|-------|----------|-----------|---------------|--------------|
| 1 | -29.5 | -76.799 | WHOI S2a Core | 7820 |
| 2 | -24.3 | -83.502 | WHOI S2a Core | 7823 |
| 3 | -23.4 | -84.568 | WHOI RBR Core | 11333 |
| 4 | -22.5 | -85.611 | WHOI S2a Core | 7824 |



Packard Transit Cruise 2024

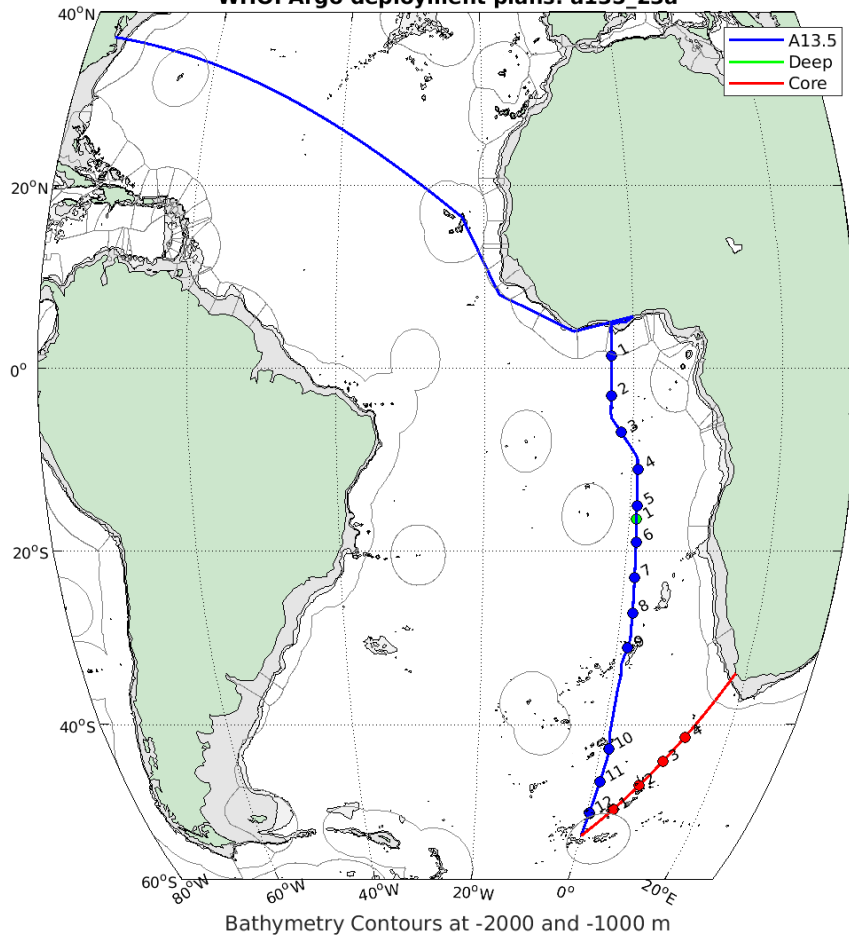
| Index | Latitude | Longitude | Float Type | Float Number |
|------------------------|----------|-----------|---------------|--------------|
| 1 | 25.430 | -29.000 | WHOI BGC | |
| 2 | 24.084 | -33.500 | WHOI BGC | |
| 3 | 22.574 | -38.000 | WHOI BGC | |
| 4 | 16.861 | -52.000 | WHOI BGC | |
| 5 (same location as 4) | 16.861 | -52.000 | WHOI RBR Core | |
| 6 | 15.012 | -55.900 | WHOI RBR Core | |



A13.5 Cruise 2024

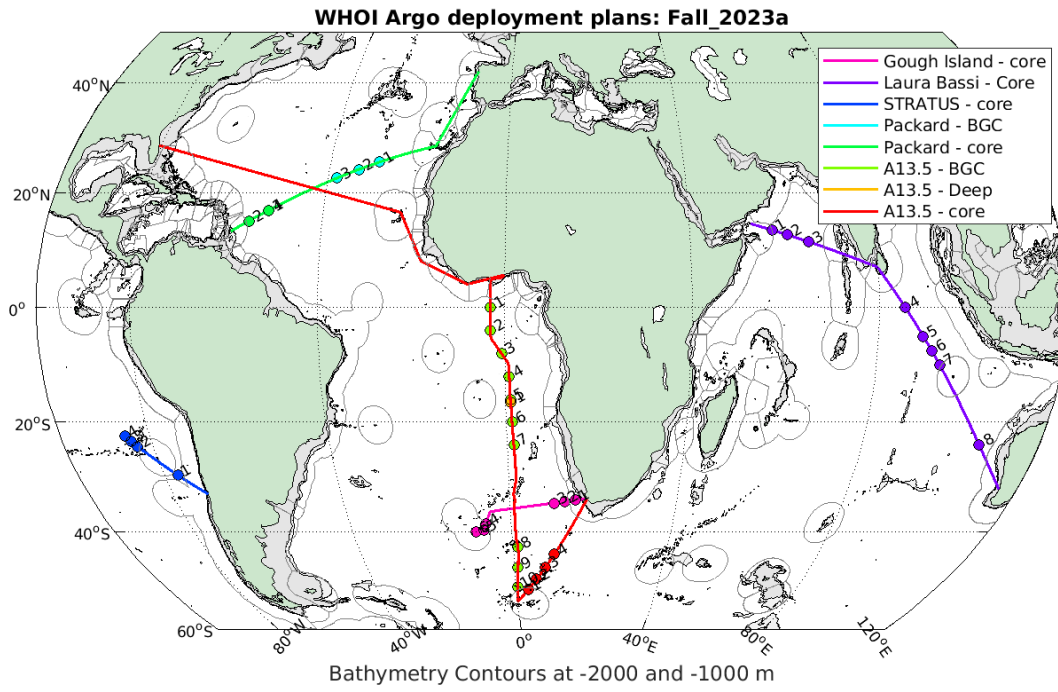
| Index | Latitude | Longitude | Float Type | CTD Station |
|-------|----------|-----------|-------------------|-------------|
| 1 | 1.33 | -3.00 | WHOI BGC | 14 |
| 2 | -3.00 | -3.00 | WHOI BGC | 27 |
| 3 | -7.00 | -1.56 | WHOI BGC | 35 |
| 4 | -11.00 | 0.83 | WHOI BGC | 43 |
| 5 | -15.00 | 1.00 | WHOI BGC | 51 |
| 6 | -16.50 | 1.06 | WHOI Deep (12070) | 54 |
| 7 | -19.00 | 1.23 | WHOI BGC | 59 |
| 8 | -23.00 | 1.44 | WHOI BGC | 67 |
| 9 | -27.00 | 1.66 | WHOI BGC | 75 |
| 10 | -31.00 | 1.56 | WHOI BGC | 83 |
| 11 | -43.00 | 1.33 | WHOI BGC | 107 |
| 12 | -47.00 | 0.97 | WHOI BGC | 115 |
| 13 | -51.00 | 0.42 | WHOI BGC | 123 |
| 14 | -50.50 | 4.56 | WHOI Core | n/a 50.5 S |
| 15 | -47.50 | 7.83 | WHOI Core | n/a 47.5 S |
| 16 | -44.50 | 10.66 | WHOI Core | n/a 44.5 S |
| 17 | -41.50 | 13.17 | WHOI Core | n/a 41.5 S |

WHOI Argo deployment plans: a135 23a

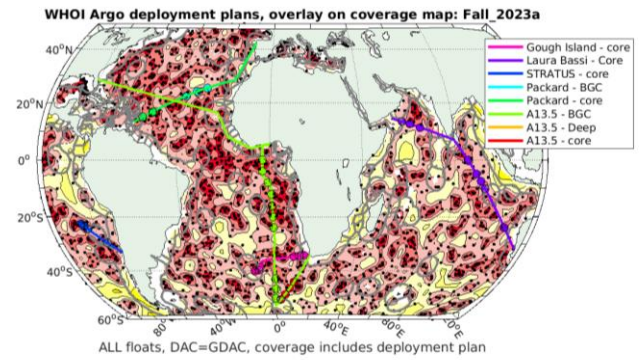
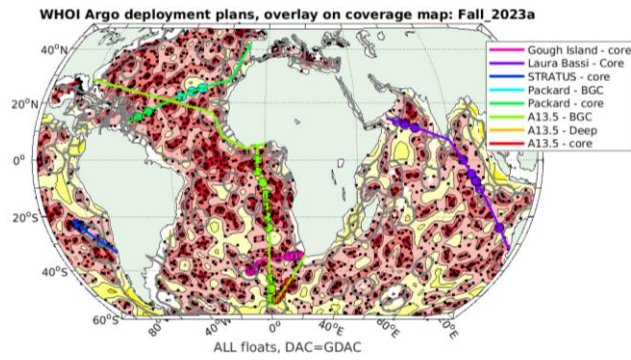


WHOI Argo:28-Nov-2023

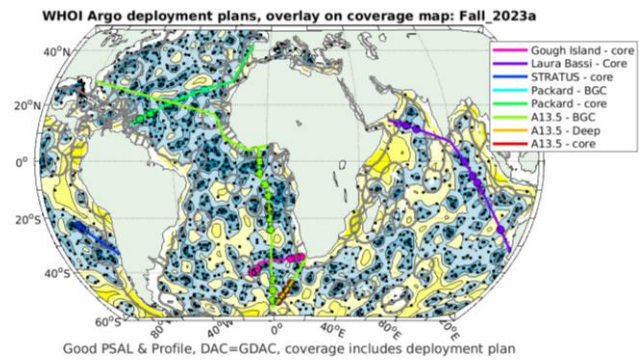
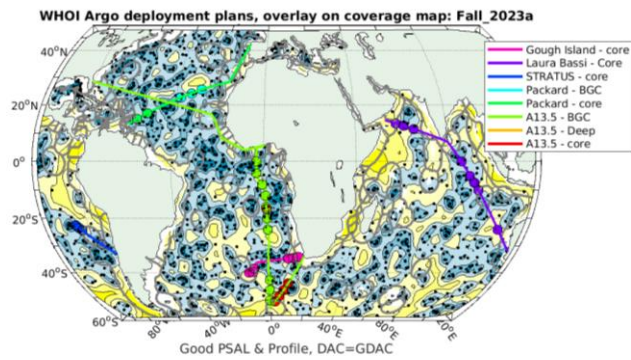
Background/Supplemental Maps



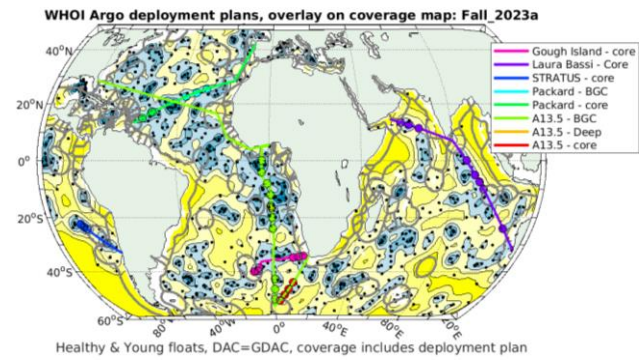
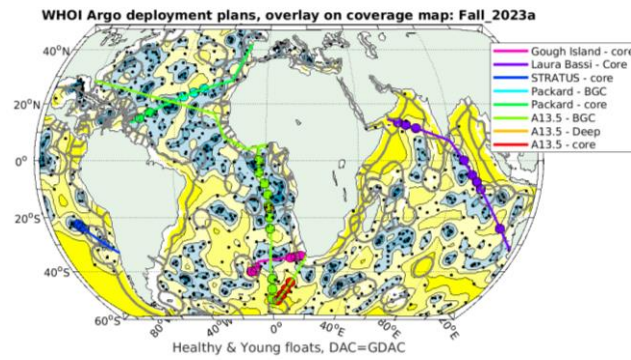
All Floats (Coverage BEFORE/AFTER)



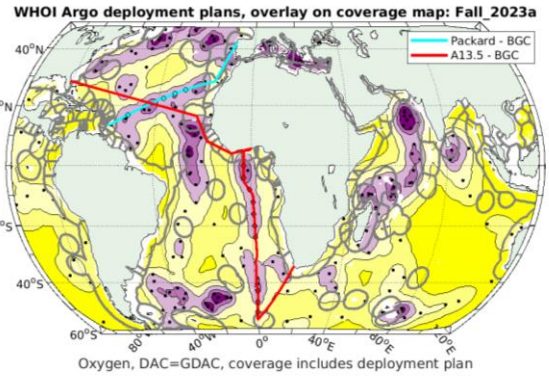
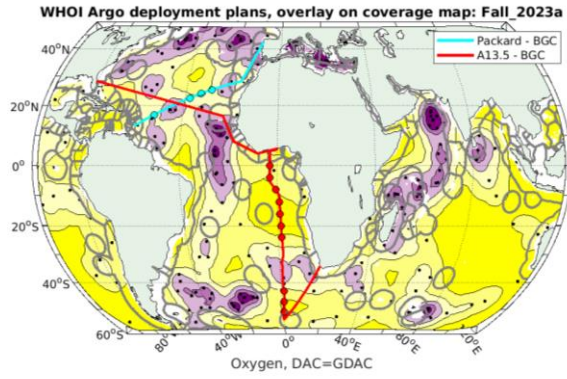
Healthy (conductivity sensor) (Coverage BEFORE/AFTER)



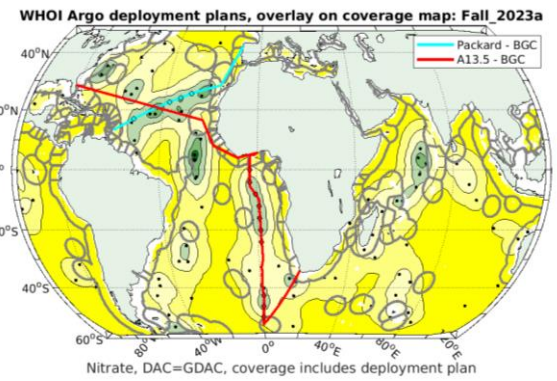
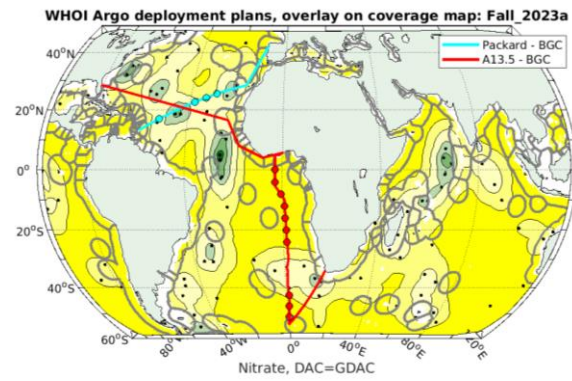
Healthy (conductivity sensor) & Young (Coverage BEFORE/AFTER)



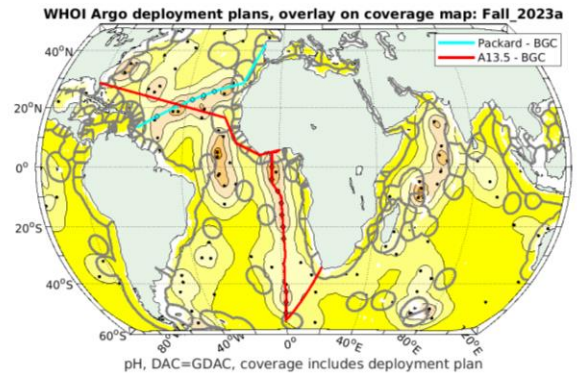
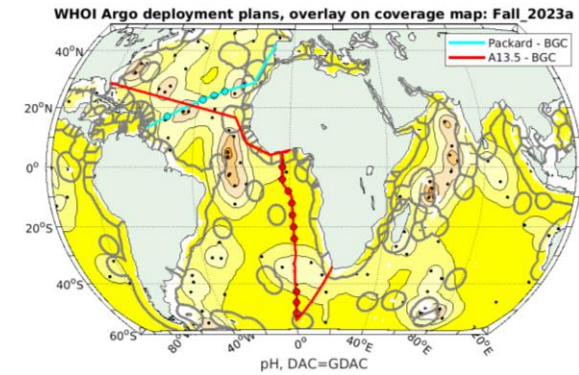
Oxygen (BEFORE/AFTER)



Nitrate (BEFORE/AFTER)



pH (BEFORE/AFTER)



Listing of all planned deployment locations

1,Gough Island-core,1,-34.1,15.67
2,Gough Island-core,2,-34.36,13.12
3,Gough Island-core,3,-34.62,10.58
4,Gough Island-core,4,-38.58,-6.33
5,Gough Island-core,5,-39.75,-7
6,Gough Island-core,6,-40.12,-9
7,Laura Bassi-core,1,13.4,57.89
8,Laura Bassi-core,2,12.56,61.15
9,Laura Bassi-core,3,11.34,65.61
10,Laura Bassi-core,4,0,85.47
11,Laura Bassi-core,5,-5,89.51
12,Laura Bassi-core,6,-7.5,91.55
13,Laura Bassi-core,7,-10,93.63
14,Laura Bassi-core,8,-24,106.46
15,STRATUS-core,1,-29.5,-76.8
16,STRATUS-core,2,-24.3,-83.5
17,STRATUS-core,3,-23.4,-84.57
18,STRATUS-core,4,-22.5,-85.61
19,Packard-BGC,1,25.43,-29
20,Packard-BGC,2,24.08,-33.5
21,Packard-BGC,3,22.57,-38
22,Packard-BGC,4,16.86,-52
23,Packard-core,1,16.86,-52
24,Packard-core,2,15.01,-55.9
25,A13.5-BGC,1,0,-3
26,A13.5-BGC,2,-4,-3
27,A13.5-BGC,3,-8,-0.72
28,A13.5-BGC,4,-12,0.87
29,A13.5-BGC,5,-16,1
30,A13.5-BGC,6,-20,1.26
31,A13.5-BGC,7,-24,1.5
32,A13.5-BGC,8,-43,1.33
33,A13.5-BGC,9,-47,0.97
34,A13.5-BGC,10,-51,0.42
35,A13.5-Deep,1,-16.5,1.06
36,A13.5-core,1,-51.46,3.4
37,A13.5-core,2,-49.32,5.9
38,A13.5-core,3,-46.92,8.4
39,A13.5-core,4,-44.34,10.8