

R/V Langseth – A13.5 Cruise 2024
R/V Gunter – PNE Cruise 2024
R/V Kaharoa – Delivery Cruise 2024
R/V Packard – Delivery Cruise 2024
R/V Thompson – I08S Cruise 2024
R/V Thompson – TN-431 Transit Cruise 2024
R/V Thompson – Astral Cruise 2024
R/V S.A. Agulhas II – Marian Island Cruise 2024

OneArgo Deployment Plan
Version A, January 16, 2024

Table of Contents

Table of Contents	1
Float Inventory	2
Deployment Reporting	3
PNE Cruise 2024.....	4
A13.5 Cruise 2024	5
Kaharoa Delivery Cruise 2024.....	7
Packard Transit Cruise 2024	8
I08S Cruise 2024.....	9
Thompson Transit TN-431 2024.....	10
ASTRAL 2024	11
Marion Island 2024	12
Atlantic Ocean Background/Supplemental Maps	13
Indian/Southern Ocean Background/Supplemental Maps	16
Listing of all planned deployment locations	18

Contacts: Deb West-Mack (dwest@whoi.edu), Pelle Robbins (probbins@whoi.edu), Aidan Thayer (aidan.thayer@whoi.edu)

Float Inventory

Total: 55 Core: 38 BGC: 16 Deep: 1

To be loaded in Pascagoula, MS on the R/V Gunter for the PNE Transit Leg:

1 WHOI MRV S2a Core floats:

Serial numbers: 7793

1 WHOI MRV Alto-SBE Core float:

Serial number: 11047

1 WHOI Navis BGC floats:

Serial numbers: wn1528

To be loaded in Norfolk, VA on the R/V Langseth for the GO-SHIP A13.5 Cruise:

4 WHOI MRV S2a Core floats:

Serial numbers: 7737, 7788, 7797, 7833

1 WHOI MRV Deep Solo float:

Serial number: 12070

11 WHOI Navis BGC floats:

Serial numbers: wn1358, wn1483, wn1489, wn1530, wn1542, wn1557, wn1558, wn1559, wn1560, wn1561, wn1562

To be loaded in Vigo, Spain on the R/V Kaharoa for the Delivery cruise:

15 WHOI MRV S2a Core float:

Serial number: 7480, 7490, 7522, 7597, 7699, 7713, 7732, 7734, 7746, 7747, 7774, 7826, 7827, 7828, 7875

To be loaded in Vigo, Spain on the R/V Packard for the Transit Cruise:

2 WHOI MRV Alto-RBR Core floats:

Serial numbers: 11336, 11337

4 WHOI Navis BGC floats:

Serial numbers: wn1539, wn1540, wn1541, wn1554

To be loaded in Freemantle, Australia on the R/V Thompson for the I08S cruise:

6-8 WHOI MRV S2a Core float:

Serial number: TBD

To be loaded in Freemantle, Australia on the R/V Thompson for the TN-431 Transit and Astral cruises:

4 WHOI MRV S2a Core float:
Serial number: TBD

To be loaded in Cape Town, South Africa on the R/V S.A. Agulhas II for the Marian Island cruise:

3 WHOI MRV S2a Core float:
Serial number: TBD

All floats are equivalent and interchangeable within Class. e.g. any WHOI S2a Core float is the same as other WHOI S2a Core floats so it doesn't matter which specific float is deployed at each location – whichever is available (of appropriate type) at the top of the stack is fine.

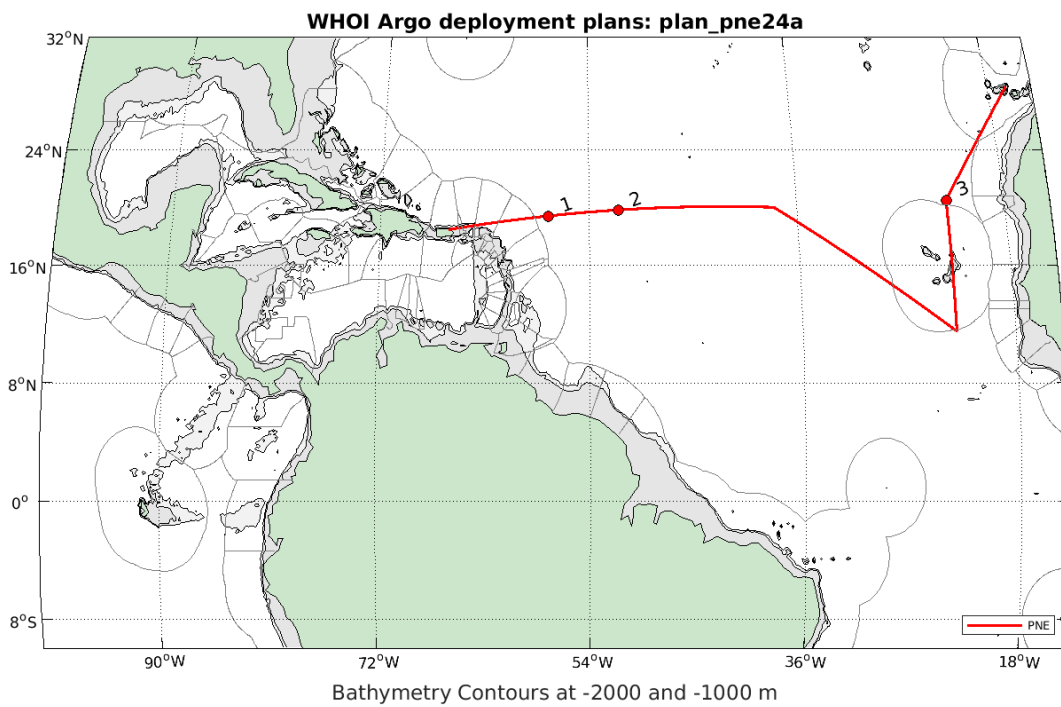
Deployment Reporting

After Float deployment please report the following to deploymentinfo@whoi.edu

1. Float #
2. Deployment Location (latitude and longitude)
3. Deployment Time (GMT)
4. Any issues or problems with the deployment water release, tangled lines, etc.

PNE Cruise 2024

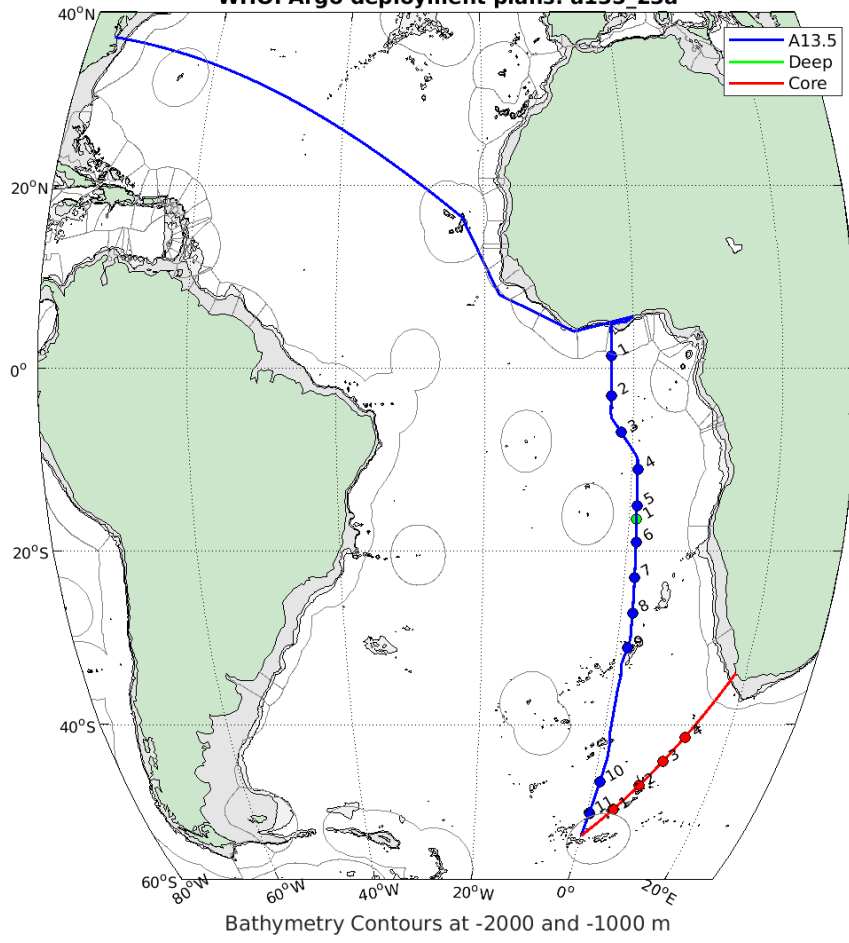
Index	Latitude	Longitude	Float Type	Float Number
1	19° 24' N	57° 30' W	WHOI S2a Core	7793
2	19° 48.7' N	51° 30' W	WHOI Alto Core	11047
3	20° 30' N	23° 00' W	WHOI BGC	wn1528, near the 3 rd mooring



A13.5 Cruise 2024

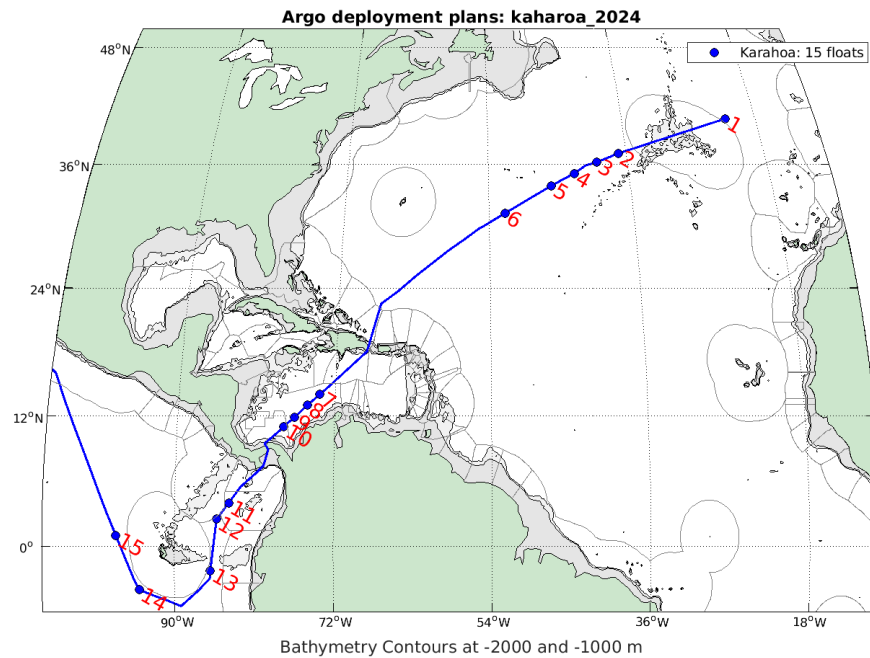
Index	Latitude	Longitude	Float Type	CTD Station
1	1.33° N	3.00° W	WHOI BGC	14
2	3.00° S	3.00° W	WHOI BGC	27
3	7.00° S	1.56° W	WHOI BGC	35
4	11.00° S	0.83° E	WHOI BGC	43
5	15.00° S	1.00° E	WHOI BGC	51
6	16.50° S	1.06° E	WHOI Deep (12070)	54
7	19.00° S	1.23° E	WHOI BGC	59
8	23.00° S	1.44° E	WHOI BGC	67
9	27.00° S	1.66° E	WHOI BGC	75
10	31.00° S	1.56° E	WHOI BGC	83
11	47.00° S	0.97° E	WHOI BGC	115
12	51.00° S	0.42° E	WHOI BGC	123
13	50.50° S	4.56° E	WHOI Core	n/a 50.5 S
14	47.50° S	7.83° E	WHOI Core	n/a 47.5 S
15	44.50° S	10.66° E	WHOI Core	n/a 44.5 S
16	41.50° S	13.17° E	WHOI Core	n/a 41.5 S

WHOI Argo deployment plans: a135 23a



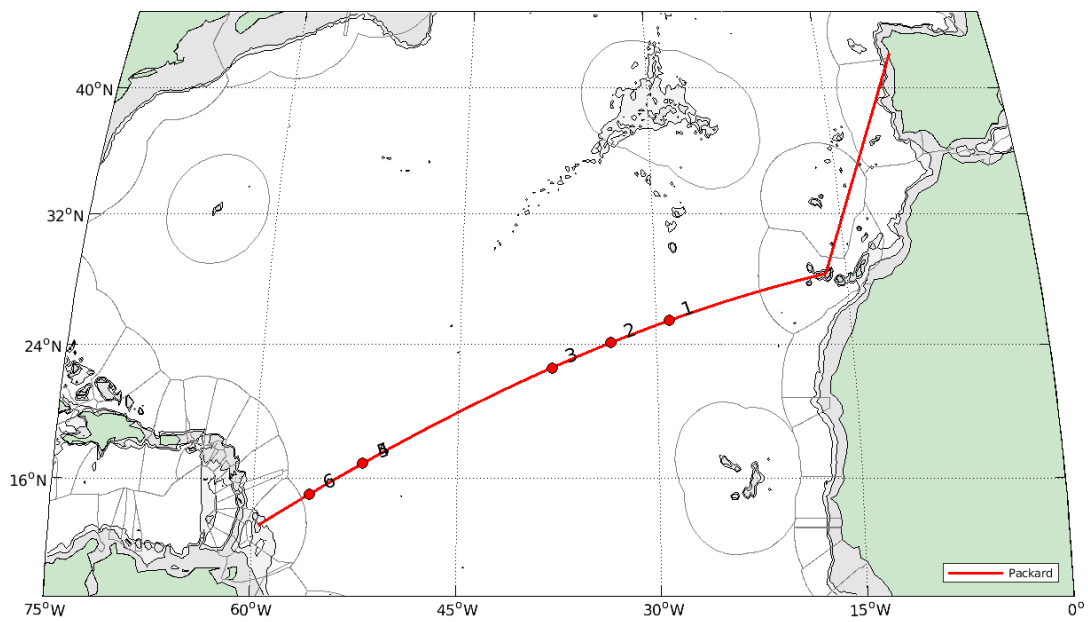
Kaharoa Delivery Cruise 2024

Index	Latitude	Longitude	Float Type	Float Number	Station Number
1	40° 36' N	22° 00' W	WHOI Core	7713	1
2	37° 06' N	37° 00' W	WHOI Core	7732	2
3	36° 12' N	40° 00' W	WHOI Core	7746	3
4	35° 06' N	43° 00' W	WHOI Core	7747	4
5	33° 54' N	46° 00' W	WHOI Core	7774	5
6	31° 12' N	52° 00' W	WHOI Core	7875	6
7	14° 00' N	73° 48' W	WHOI Core	7734	15
8	13° 00' N	75° 12' W	WHOI Core	7826	17
9	11° 54' N	76° 36' W	WHOI Core	7827	19
10	11° 00' N	77° 48' W	WHOI Core	7828	21
11	4° 00' N	83° 51' W	WHOI Core	7480	25
12	2° 30' N	85° 12' W	WHOI Core	7490	28
13	2° 15' S	85° 54' W	WHOI Core	7522	33
14	4° 00' S	94° 00' W	WHOI Core	7597	42
15	1° 00' N	96° 36' W	WHOI Core	7699	45



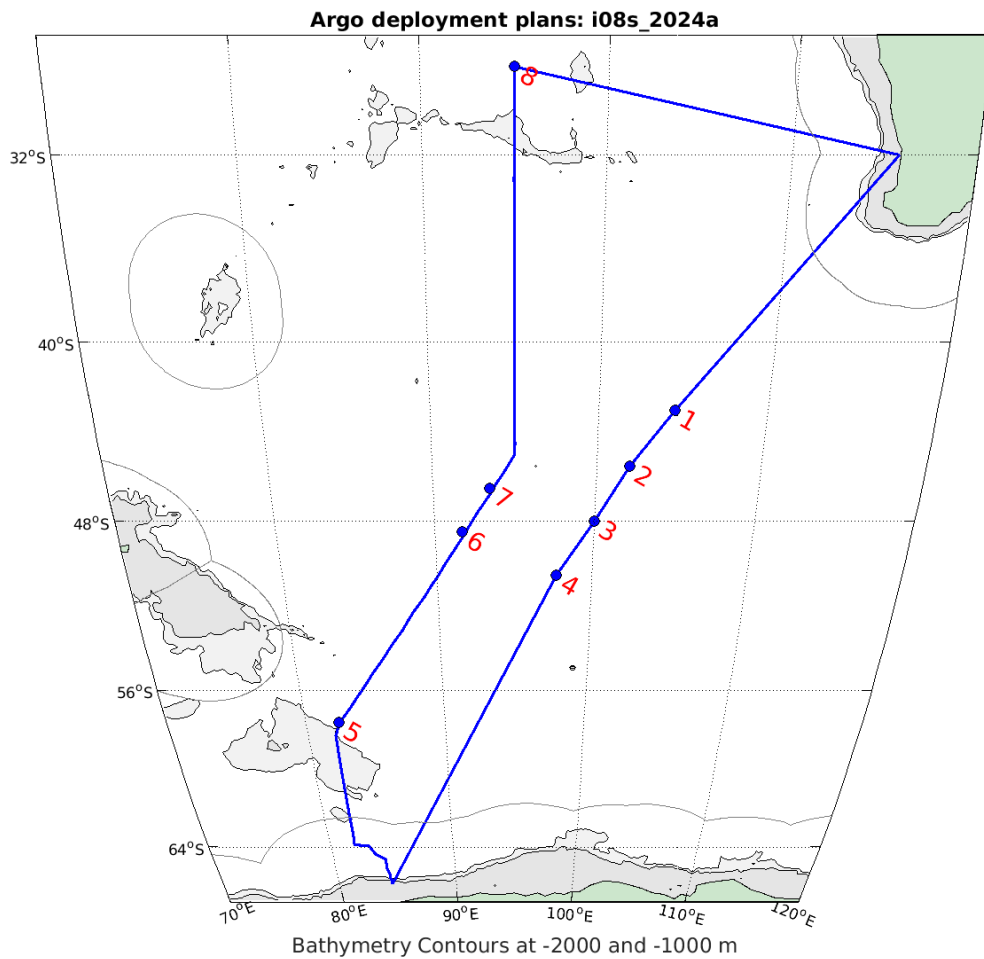
Packard Transit Cruise 2024

Index	Latitude	Longitude	Float Type	Float Number
1	25.430° N	29.0° W	WHOI BGC	
2	24.084° N	33.5° W	WHOI BGC	
3	22.574° N	38.0° W	WHOI BGC	
4	16.861° N	52.0° W	WHOI BGC	
5 (same location as 4)	16.861° N	52.0° W	WHOI RBR Core	
6	15.012° N	55.9° W	WHOI RBR Core	



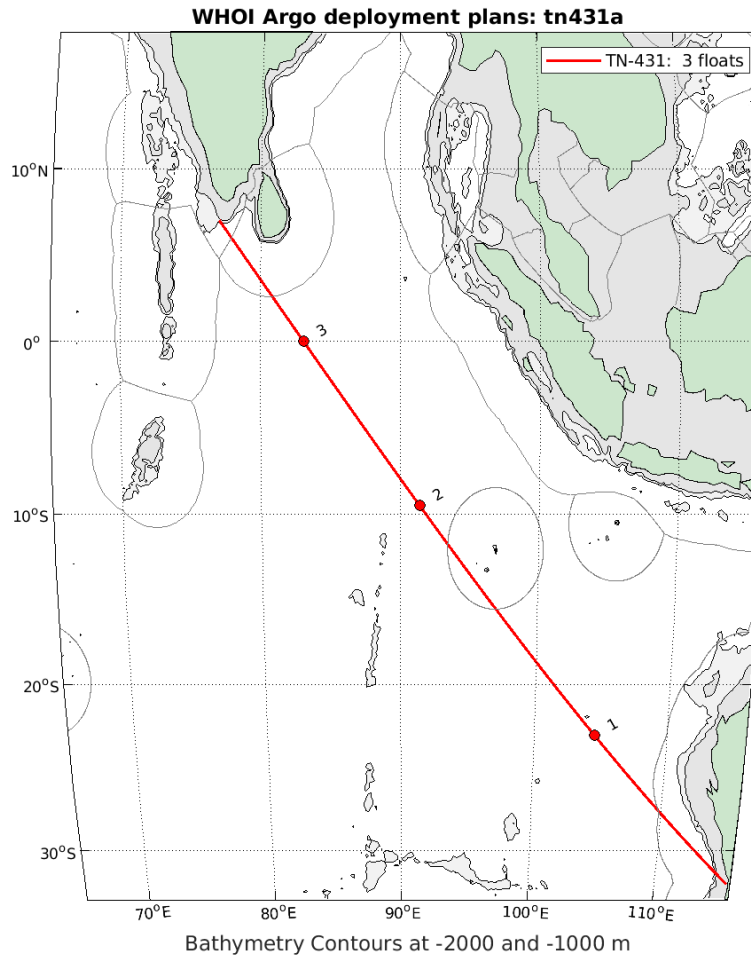
I08S Cruise 2024

Index	Latitude	Longitude	Float Type	Station Number
1	43.0° S	104.5° E	WHOI Core	Deploy on outbound by latitude
2	45.5° S	102.0° E	WHOI Core	
3	48.0° S	100.0° E	WHOI Core	
4	50.5° S	97.7° E	WHOI Core	
5	57.6° S	82.40° E	WHOI Core	25
6	48.5° S	91.93° E	WHOI Core	46
7	46.5° S	93.71° E	WHOI Core	50
8	28.3° S	95.00° E	WHOI Core	84



Thompson Transit TN-431 2024

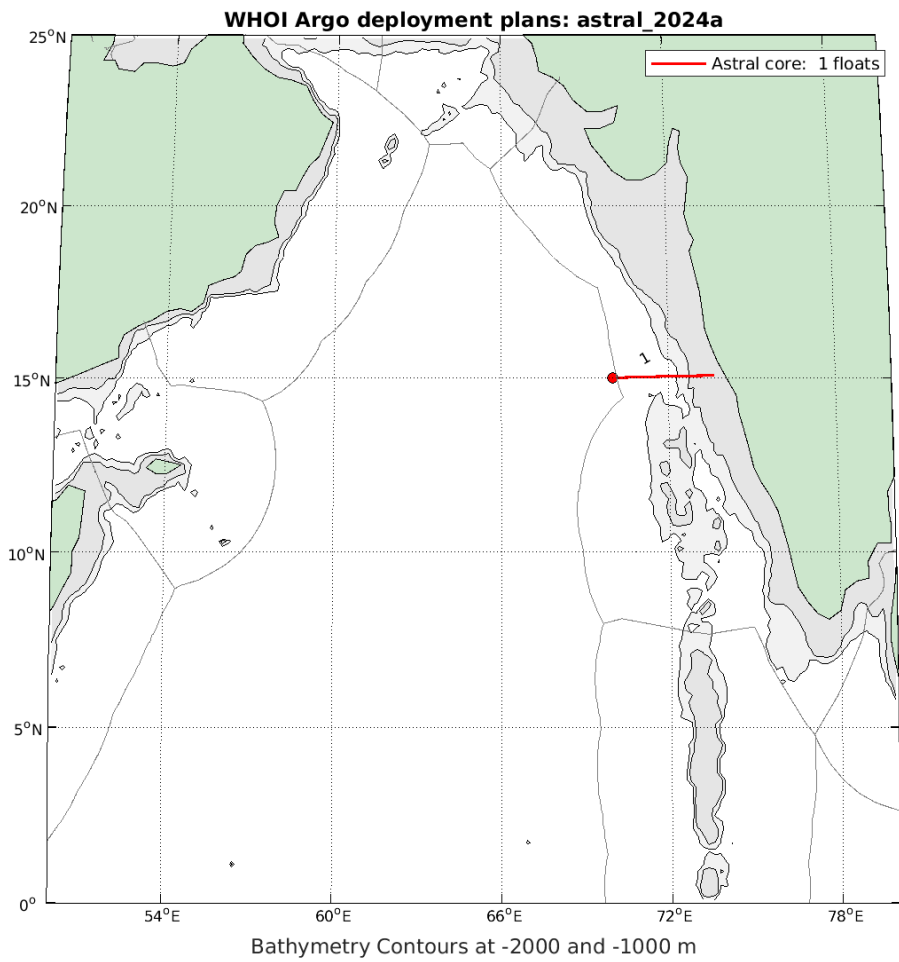
Index	Latitude	Longitude	Float Type	Comments
1	23.0° S	104.53° E	WHOI Core	Deploy by latitude
2	9.5° S	91.36° E	WHOI Core	
3	0° equator	83.07° E	WHOI Core	



WHOI Argo:26-Dec-2023

ASTRAL 2024

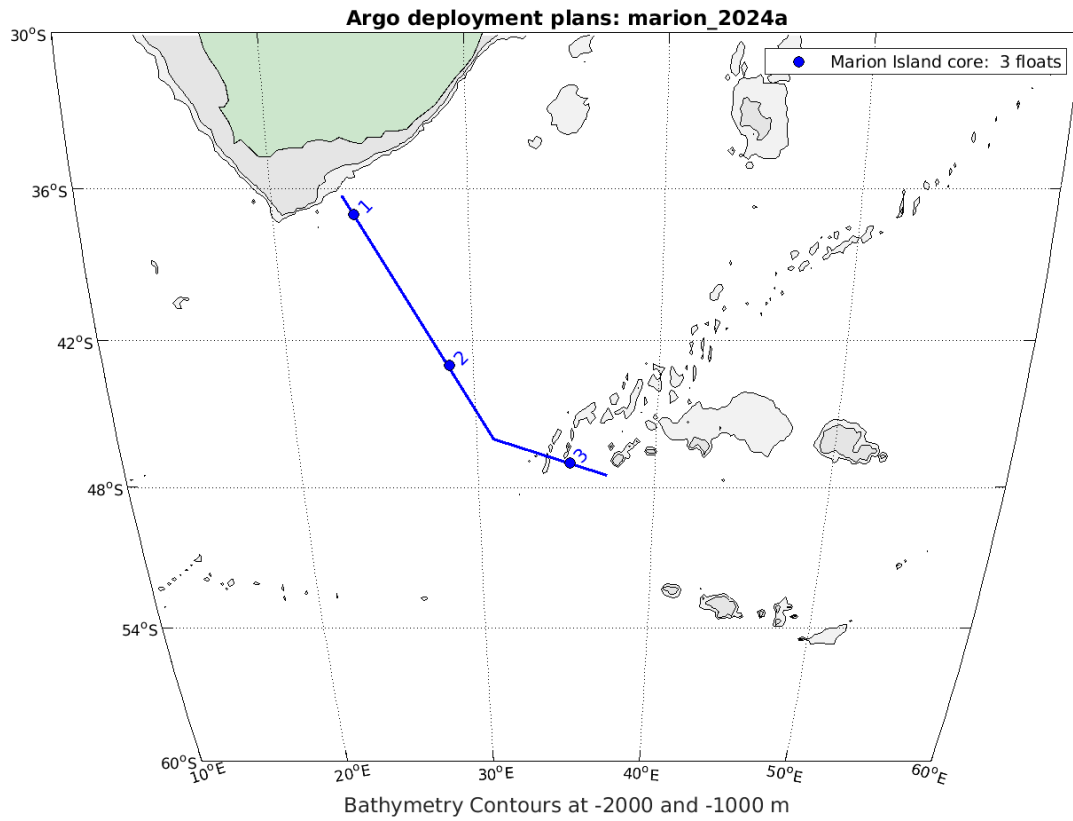
Index	Latitude	Longitude	Float Type	Comments
1	15° N	70° E	WHOI Core	Deployed in international waters at the Chief Scientist discretion



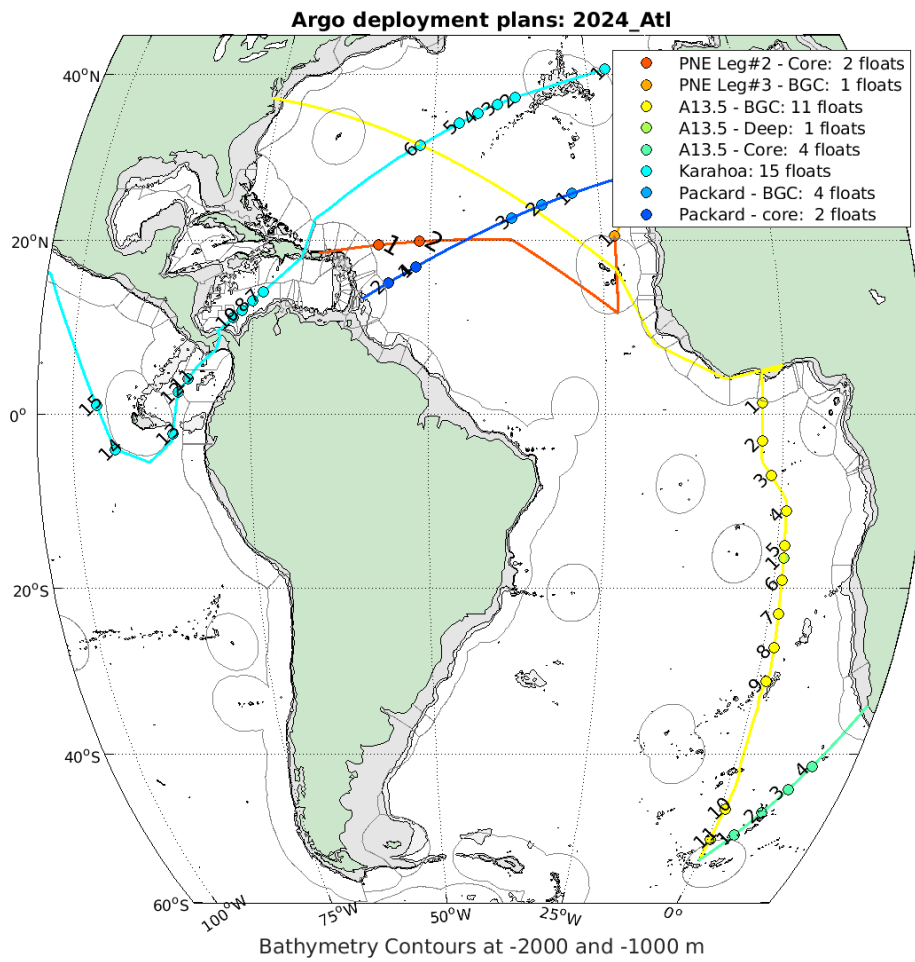
WHOI Argo:27-Dec-2023

Marion Island 2024

Index	Latitude	Longitude	Float Type	Comments
1	37.0° S	24.165° E	WHOI Core	Deploy by latitude
2	43.0° S	28.688° E	WHOI Core	
3	47.0° S	35.183° E	WHOI Core	



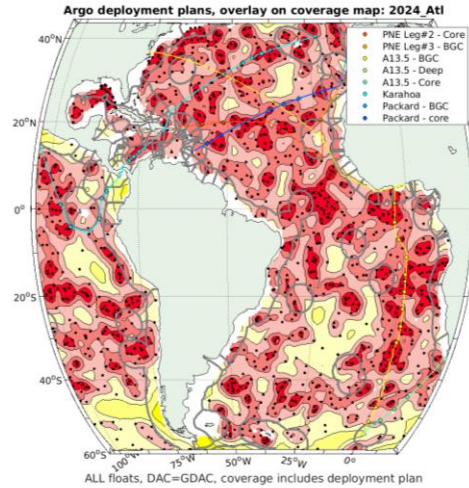
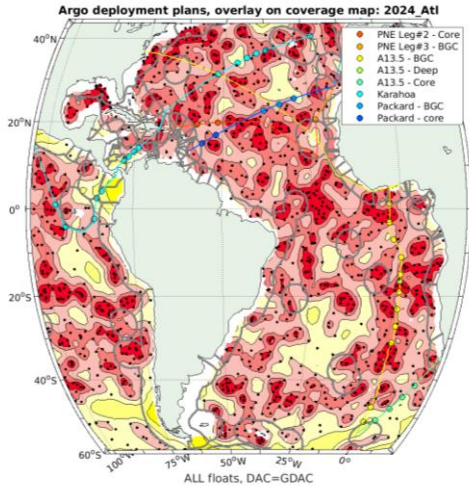
Atlantic Ocean Background/Supplemental Maps



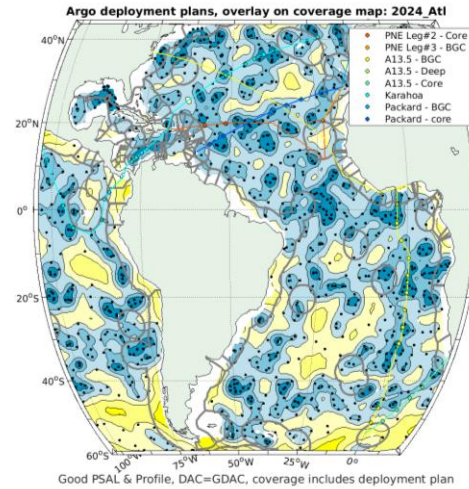
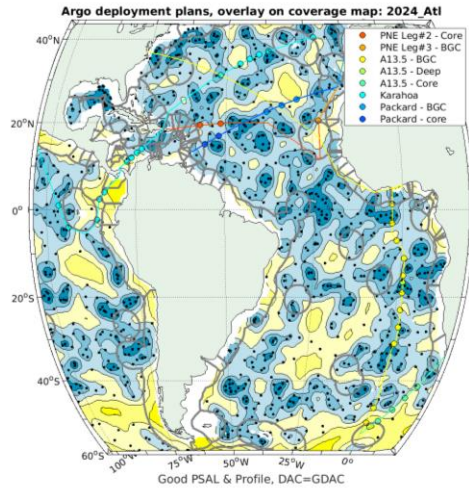
WHOI Argo:18-Jan-2024

Core : 23
BGC : 16
Deep : 1

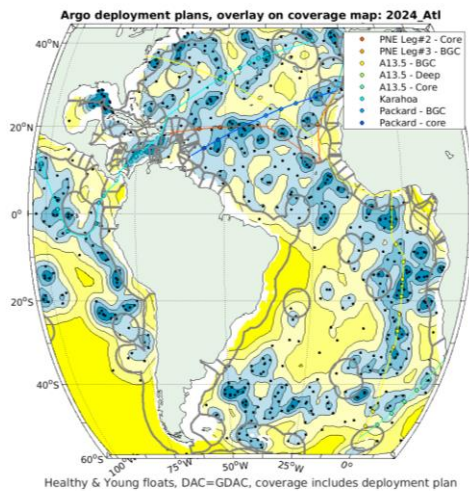
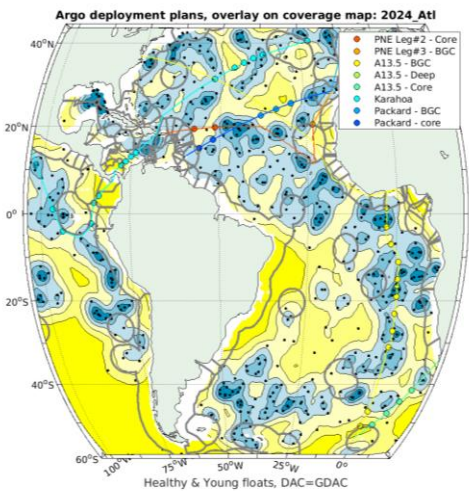
All Floats (Coverage BEFORE/AFTER)



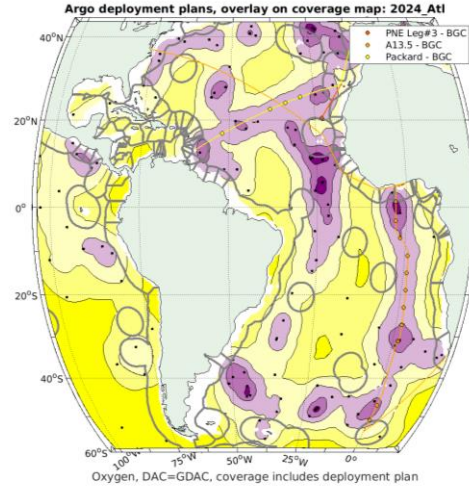
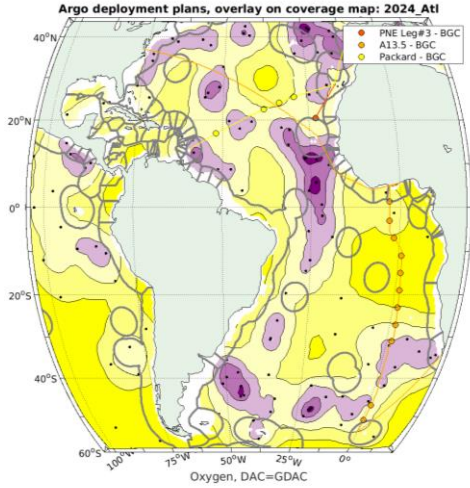
Healthy (conductivity sensor) (Coverage BEFORE/AFTER)



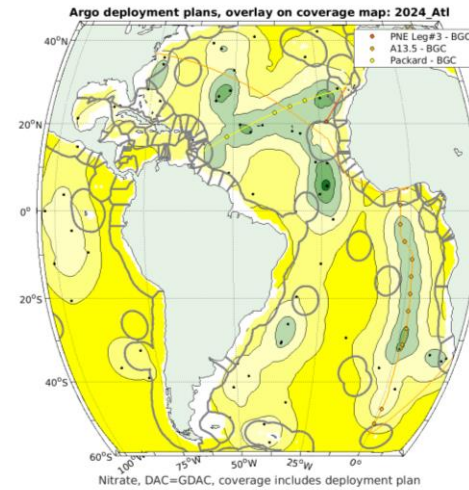
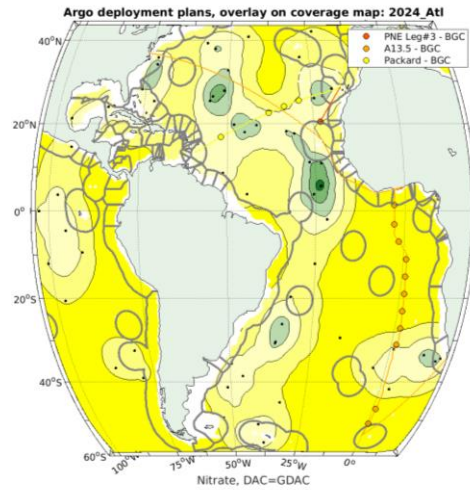
Healthy (conductivity sensor) & Young (Coverage BEFORE/AFTER)



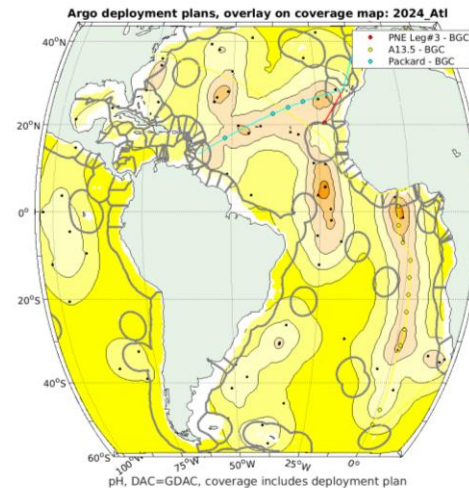
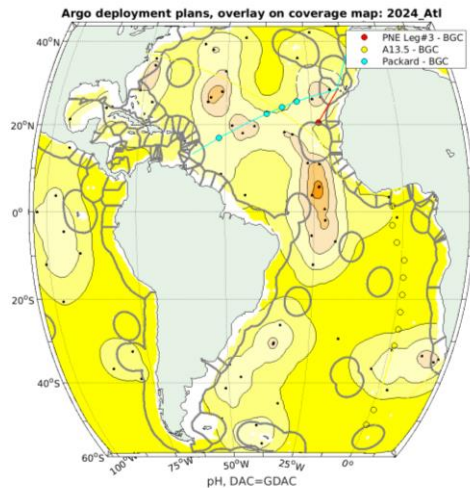
Oxygen (BEFORE/AFTER)



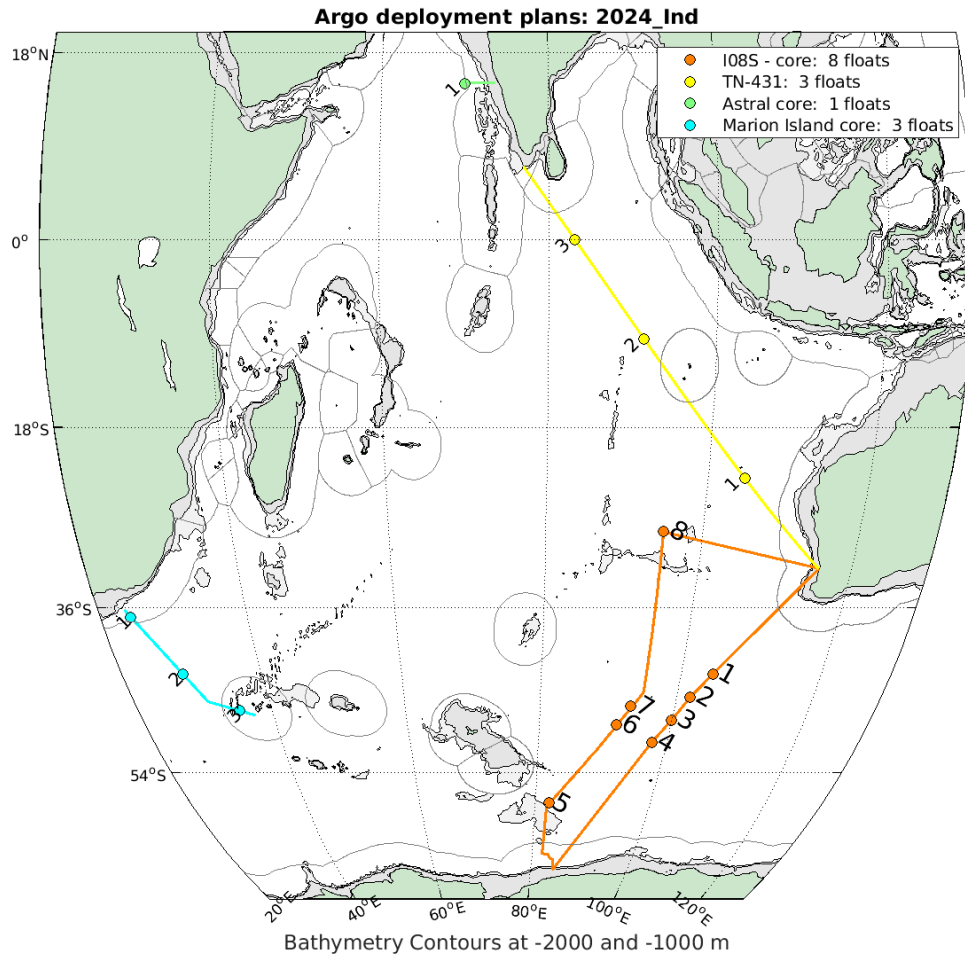
Nitrate (BEFORE/AFTER)



pH (BEFORE/AFTER)



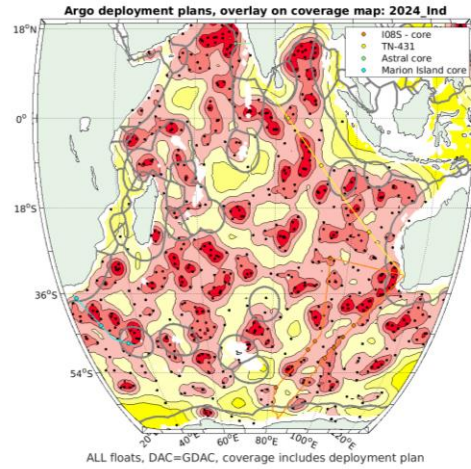
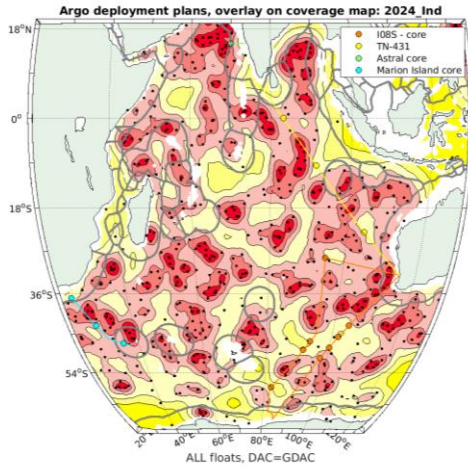
Indian/Southern Ocean Background/Supplemental Maps



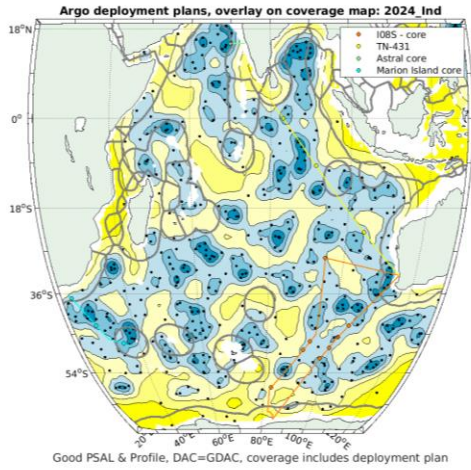
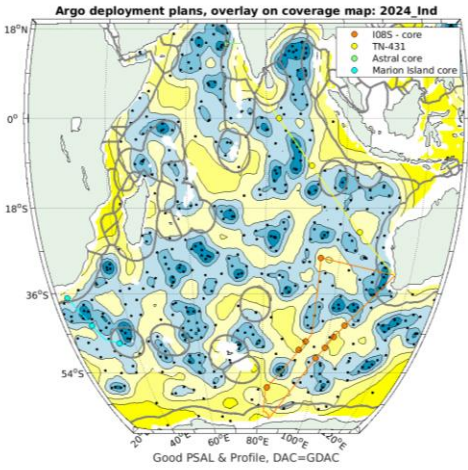
WHOI Argo:17-Jan-2024

Core : 15
BGC : 0
Deep: 0

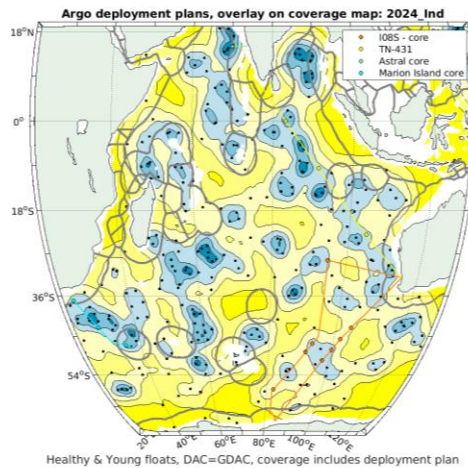
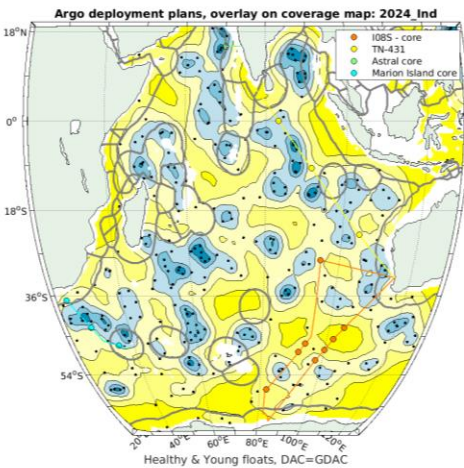
All Floats (Coverage BEFORE/AFTER)



Healthy (conductivity sensor) (Coverage BEFORE/AFTER)



Healthy (conductivity sensor) & Young (Coverage BEFORE/AFTER)



Listing of all planned deployment locations

1,PNE-core,19.4,-57.5,1
2,PNE-core,19.81,-51.5,2
3,PNE-BGC,20.5,-23,1
4,A13.5-BGC,1.33,-3,1
5,A13.5-BGC,-3,-3,2
6,A13.5-BGC,-7,-1.56,3
7,A13.5-BGC,-11,0.83,4
8,A13.5-BGC,-15,1,5
9,A13.5-BGC,-19,1.23,6
10,A13.5-BGC,-23,1.44,7
11,A13.5-BGC,-27,1.66,8
12,A13.5-BGC,-31,1.56,9
13,A13.5-BGC,-47,0.97,10
14,A13.5-BGC,-51,0.42,11
15,A13.5-Deep,-16.5,1.06,1
16,A13.5-Core,-50.5,4.56,1
17,A13.5-Core,-47.5,7.83,2
18,A13.5-Core,-44.5,10.66,3
19,A13.5-Core,-41.5,13.17,4
20,Karahoa-Core,40.6,-22,1
21,Karahoa-Core,37.1,-37,2
22,Karahoa-Core,36.2,-40,3
23,Karahoa-Core,35.1,-43,4
24,Karahoa-Core,33.9,-46,5
25,Karahoa-Core,31.2,-52,6
26,Karahoa-Core,14,-73.8,7
27,Karahoa-Core,13,-75.2,8
28,Karahoa-Core,11.9,-76.6,9
29,Karahoa-Core,11,-77.8,10
30,Karahoa-Core,4,-83.85,11
31,Karahoa-Core,2.5,-85.2,12
32,Karahoa-Core,-2.25,-85.9,13
33,Karahoa-Core,-4,-94,14
34,Karahoa-Core,1,-96.6,15
35,Packard-BGC,25.43,-29,1
36,Packard-BGC,24.08,-33.5,2
37,Packard-BGC,22.57,-38,3
38,Packard-BGC,16.86,-52,4
39,Packard-Core,16.86,-52,1
40,Packard-Core,15.01,-55.9,2
41,I08S-Core,-43,104.5,1
42,I08S-Core,-45.5,102,2
43,I08S-Core,-48,100,3
44,I08S-Core,-50.5,97.7,4
45,I08S-Core,-57.5,82.4,5
46,I08S-Core,-48.5,91.7,6

47,I08S-Core,-46.5,93.5,7
48,I08S-Core,-28.3,95,8
49,TN-431-Core,-23,104.53,1
50,TN-431-Core,-9.5,91.36,2
51,TN-431-Core,0,83.07,3
52,Astral-Core,15,70,1
53,Marion Island-Core,-37,24.17,1
54,Marion Island-Core,-43,28.69,2
55,Marion Island-Core,-47,35.18,3