

WHOI Argo

2022 Deployment Plans

Pelle Robbins

probbins@whoi.edu

Version: 2022.C, Apr 25, 2022

[Recent Deployments](#)

[Cruises Underway](#)

[S. A. Agulhas II, Marion Island resupply](#)

[Cruises in Preparation](#)

[Okeanos Explorer to Mid-Atlantic Ridge.](#)

[RV Neil Armstrong to Irminger Sea](#)

[RoCS Caribbean VOS](#)

[Lindblad Expeditions: Antarctica Itineraries](#)

[Summary: Map of Deployment Plans](#)

[Before/After Coverage \(Healthy Floats\)](#)

[Before/After Coverage \(Healthy & Young Floats\)](#)

[Additional maps at <http://argo.whoi.edu/argo/maps/sparse/>](http://argo.whoi.edu/argo/maps/sparse/)

[List of nominal locations of planned WHOI deployments](#)

Recent Deployments

WHOI Argo deployments completed Jan 1, 2021 - Apr 6, 2022

Cruise	Vessel	Platform Type, TOTAL = 156			
		S2A	ALTO	Deep SOLO	NAVIS BGC
SANAE Jan-Mar 2021	<i>SA Agulhas II</i>	8	-	-	-
PNE Jan-Feb 2021	<i>NOAAS R. Brown</i>	12	-	-	-
GO-SHIP A20 Apr 2021	<i>RV T. Thompson</i>	7	-	-	-
GO-SHIP A22 Apr-May 2021	<i>RV T. Thompson</i>	8	-	-	-
Exports May 2021	<i>RRS Discovery</i>	-	-	-	2
UGOS May 2021	<i>RV Pelican</i>	4	-	-	-
RoCS 2021A May 2021	<i>MV Tijuca</i>	2	-	-	-
Irminger Sea Aug 2021	<i>RV N. Armstrong</i>	-	6	-	1
PNE Nov-Dec 2021	<i>NOAAS R. Brown</i>	11	-		
Go-SHIP A13.5 Jan 2022	<i>NOAAS R. Brown</i>	15		1	6
Blue Observer Dec 21-Jan 22	<i>S/V Iris</i>	62	3	1	-
BATS 389 Jan 2022	<i>RV Atlantic Explorer</i>	-	-	-	2
Stratus Mar-Apr 2022	<i>RV Cabo de Hornos</i>	3	2		
TOTAL	<i>13 cruises, 10 vessels</i>	132	11	2	11

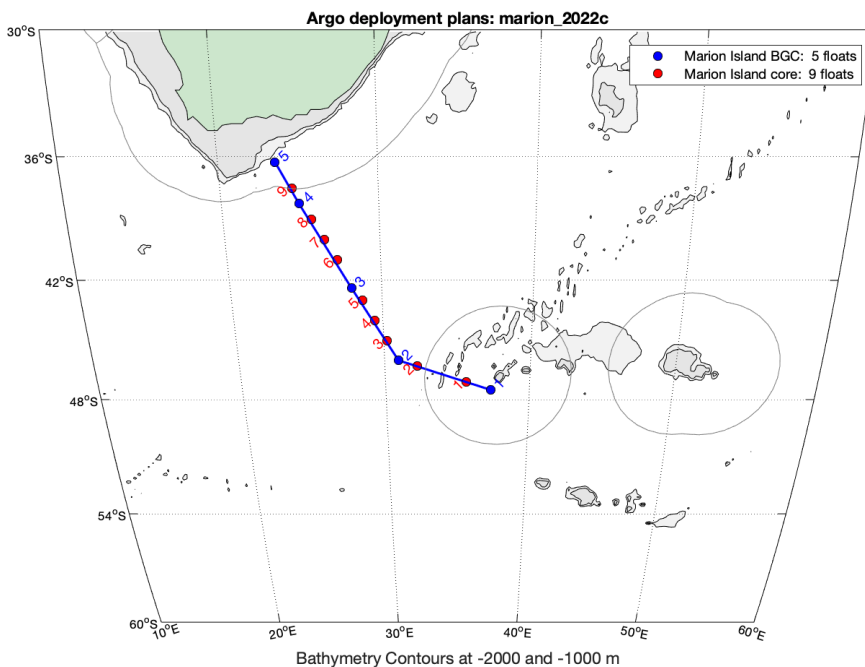
Cruises Underway

S. A. Agulhas II, Marion Island resupply

South Africa annual resupply cruises		Inventory
Marion Island, Ship: <i>S. A. Agulhas II</i>	Floats will be deployed on return leg	7 WHOI Core (MRV S2a) 2 UK Core 5 UW BGC

Nominal Deployment Locations:

Marion Island BGC	1	lat: -47.500	lon: 37.300	SN 20108
Marion Island BGC	2	lat: -46.000	lon: 30.950	SN 20002
Marion Island BGC	3	lat: -42.380	lon: 28.000	SN 20644
Marion Island BGC	4	lat: -38.250	lon: 24.930	SN 20662
Marion Island BGC	5	lat: -36.250	lon: 23.600	SN 20926
Marion Island core	1	lat: -47.100	lon: 35.607	
Marion Island core	2	lat: -46.300	lon: 32.220	
Marion Island core	3	lat: -45.000	lon: 30.196	
Marion Island core	4	lat: -44.000	lon: 29.442	
Marion Island core	5	lat: -43.000	lon: 28.688	
Marion Island core	6	lat: -41.000	lon: 27.181	
Marion Island core	7	lat: -40.000	lon: 26.427	
Marion Island core	8	lat: -39.000	lon: 25.673	
Marion Island core	9	lat: -37.500	lon: 24.542	



Cruises in Preparation

Cruise	Ship	Departs	Shipping	Inventory
Mid-Atlantic Ridge	<i>Okeanos Explorer</i>	Newport, RI May 10, 2022	Drive from WHOI	4-8 S2A
Irminger Sea	<i>RV Neil Armstrong</i>	Woods Hole Jun 21, 2022	Load at WHOI dock	4 Alto (Foukal) Core and BGC TBD
Gough Island	<i>SA Agulhas II</i>	Cape Town September	Air freight to J&D	6-8 core
Gulf of Mexico	<i>RV Pelican</i>	Cocodrie October	TBD	8 S2A (UGOS)
SANAE	<i>SA Agulhas II</i>	Cape Town December	Air freight to J&D	6-12 core
RoCS Caribbean	<i>M/V Bulk Xaymaca</i>	New Orleans, Date TBD	Ground freight	4 core
RoCS Indian	TBD	Newark	TBD	8 core

Other cruises in exploratory planning:

Atlantic Meridional Transect (AMT), southbound departs UK Feb? (Andy Rees)
 TFO-NESMA, Western Atlantic departing WHOI, 2022-2024 (YT Lin and John Colosi)
 Deep Madagascar Basin Experiment, date TBD. (Viviane Menezes, Heather Furey)
 GO-SHIP A16N, TBD
 NOAA VOS Atlantic, TBD
 Lindblad Expeditions, Antarctic destinations, departs Ushuaia (Ashley Knight)

Okeanos Explorer to Mid-Atlantic Ridge.

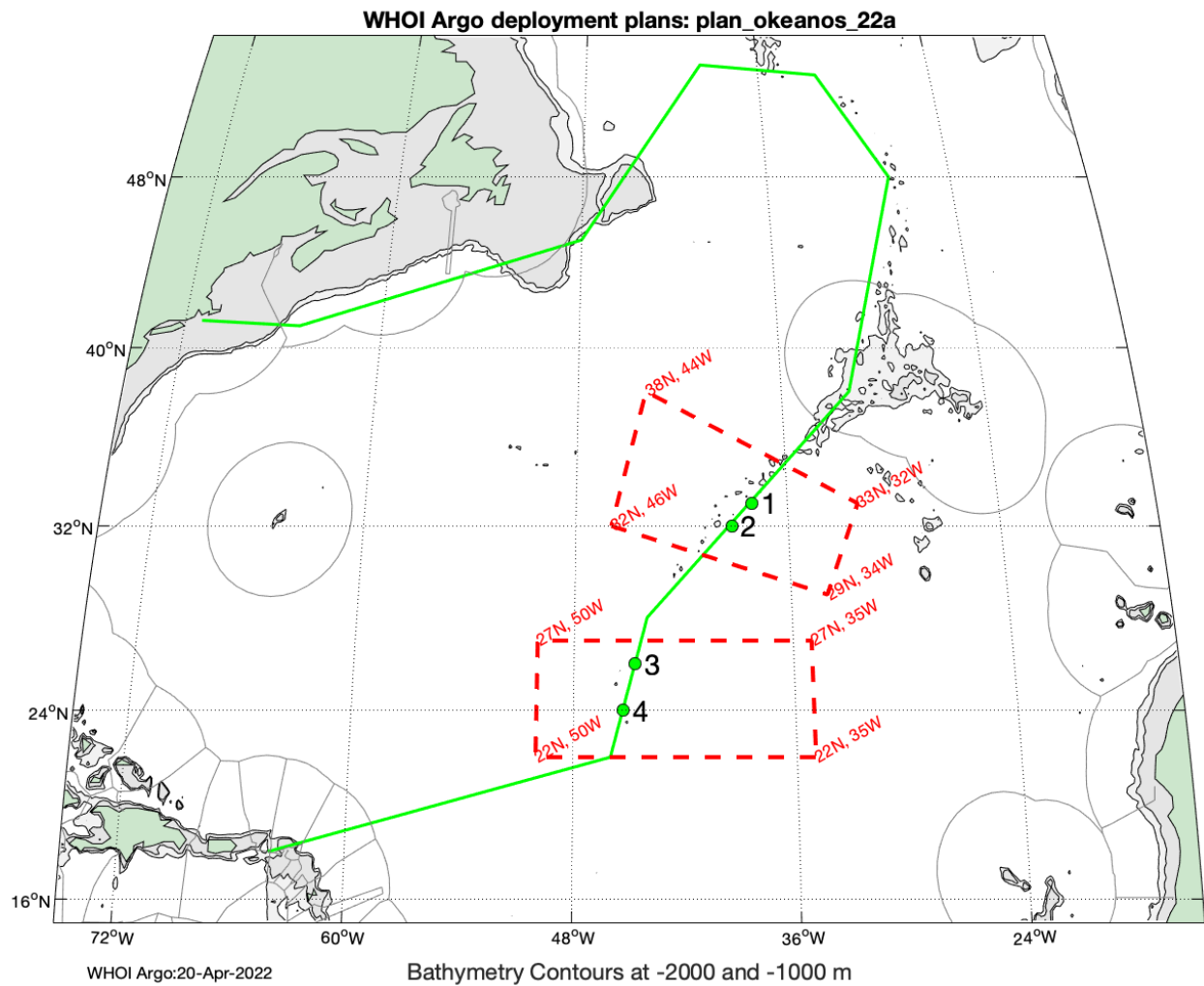
Planned Inventory: 4-8 Core

Load Date: May 6th or 9th at Newport.

Shipping: Deb West-Mack & Pelle Robbins will drive floats from Woods Hole in WHOI vehicle.

Locations of 4 nominal deployment sites, red boxes indicate range of possible sites

- 01 Okeanos MAR22 33° 0'N 38° 0'W
- 02 Okeanos MAR22 32° 0'N 39° 12'W
- 03 Okeanos MAR22 26° 0'N 44° 40'W
- 04 Okeanos MAR22 24° 0'N 45° 20'W



RV Neil Armstrong to Irminger Sea

RV Neil Armstrong Schedule

Woods Hole-Reykjavik	Jun 21 - July 18	OOI	Plueddemann
Reykjavik-Reykjavik	July 22 - Aug 12	OSNAP	Johns
Reykjavik-Nuuk	Aug 18 - Sep 24	Labrador Sea	Pickart

4 Alto for N. Foukal

will go in OSNAP shipment, need to be ready by July 1
will be deployed on Aug/Sep leg

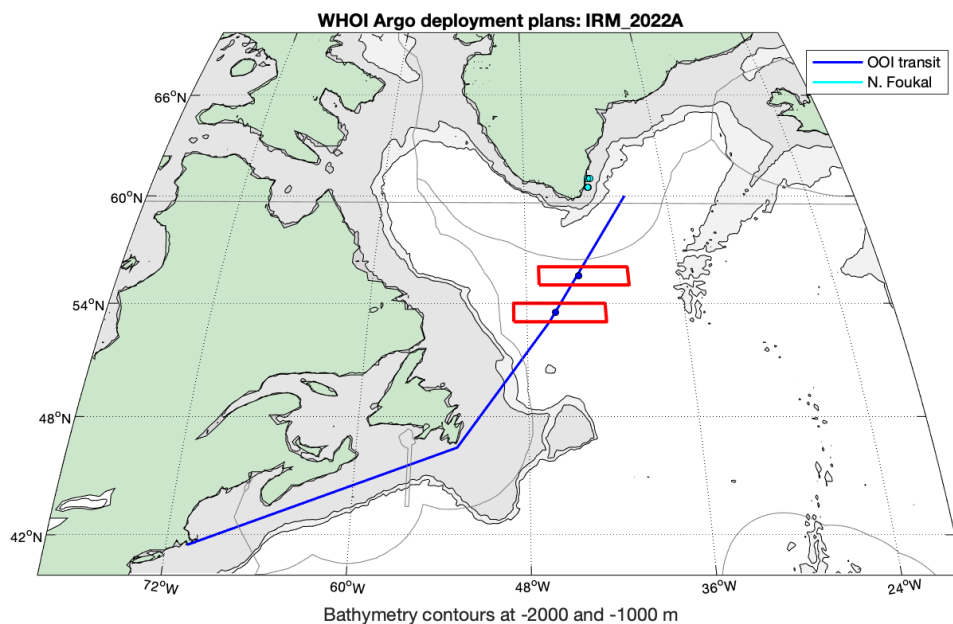
Floats to be loaded at Woods Hole prior to June Departure?

Other core and BGC floats TBD?

Transit northward from Woods Hole offers deployment opportunities. Specifics TBD.

Nominal deployment site:

- OOI transit 1 lat: 53.500 lon: -45.814
- OOI transit 2 lat: 55.500 lon: -43.871
- N. Foukal 1 lat: 60.500 lon: -42.550
- N. Foukal 2 lat: 60.500 lon: -42.500
- N. Foukal 3 lat: 61.000 lon: -42.500
- N. Foukal 4 lat: 61.000 lon: -42.300



RoCS Caribbean VOS

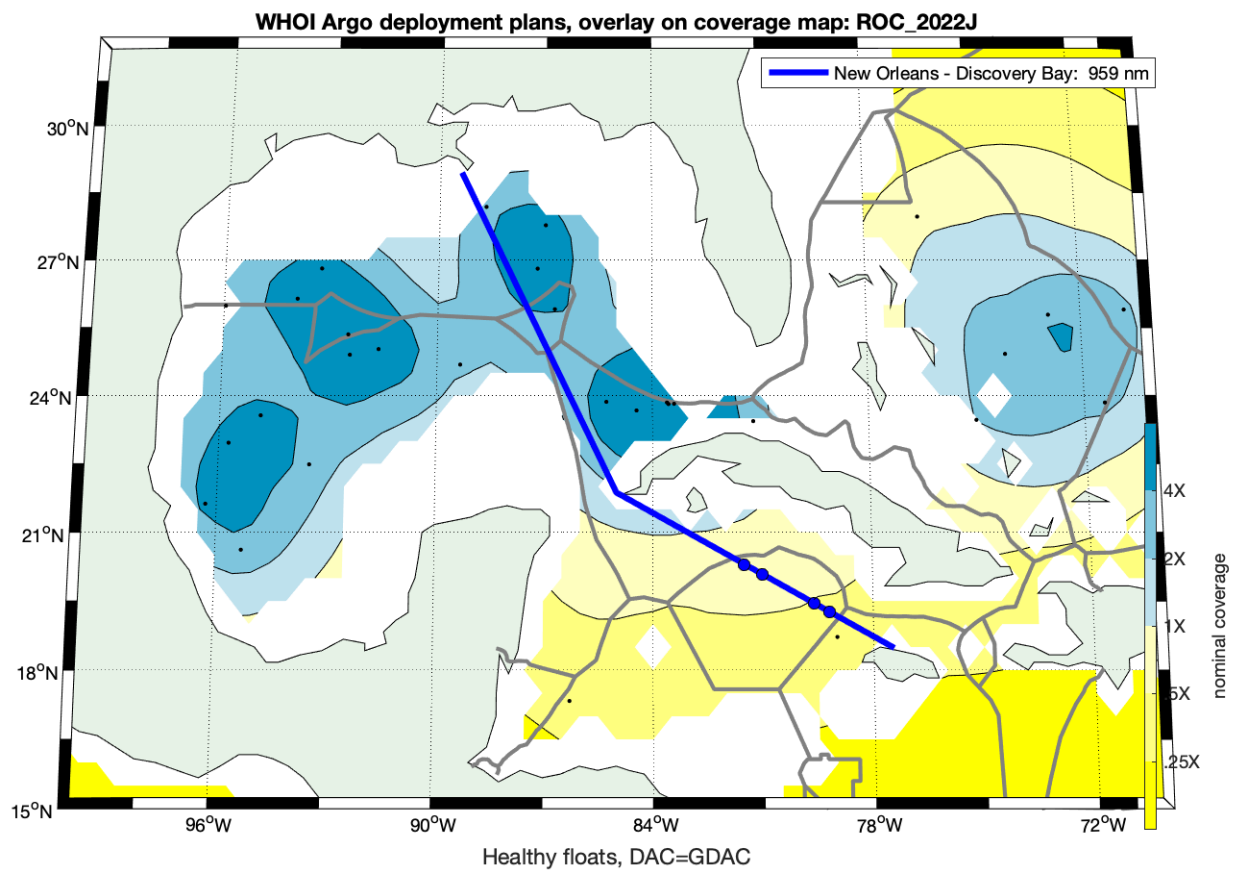
Ship: *M/V Bulk Xaymaca*

<https://www.whoi.edu/press-room/news-release/whoi-pangaea-logistics-solutions-to-advance-ocean-science-data-acquisition-through-science-rocs-program/>

New program spinning up with vessel on repeat track between New Orleans-Jamaica. This transit offers great opportunity for potential deployments in the Caribbean basin, especially within EEZ of Cayman Islands since status as British Overseas Territory grants pre-clearance for Argo deployments.

Nominal Deployment locations along this track

New Orleans - Discovery Bay	1	lat: 20.298	lon: -81.500
New Orleans - Discovery Bay	2	lat: 20.074	lon: -81.000
New Orleans - Discovery Bay	3	lat: 19.445	lon: -79.600
New Orleans - Discovery Bay	4	lat: 19.266	lon: -79.200

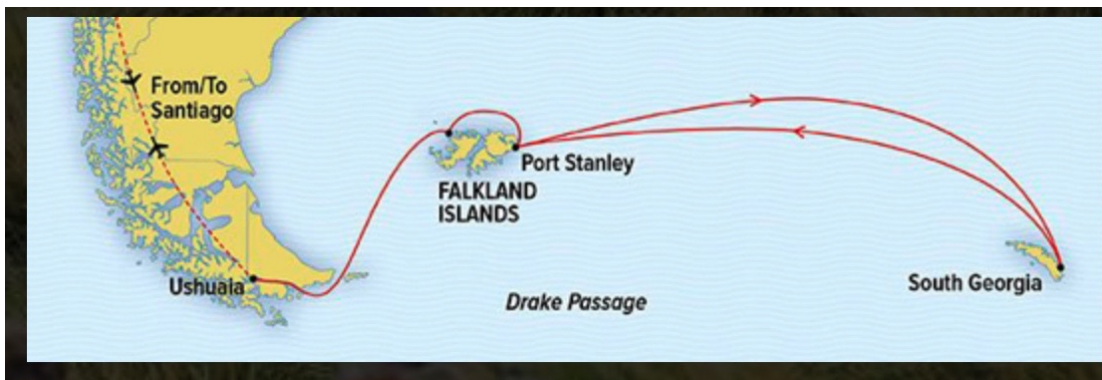


Lindblad Expeditions: Antarctica Itineraries

I. Journey to Antarctica: The White Continent, 14 days



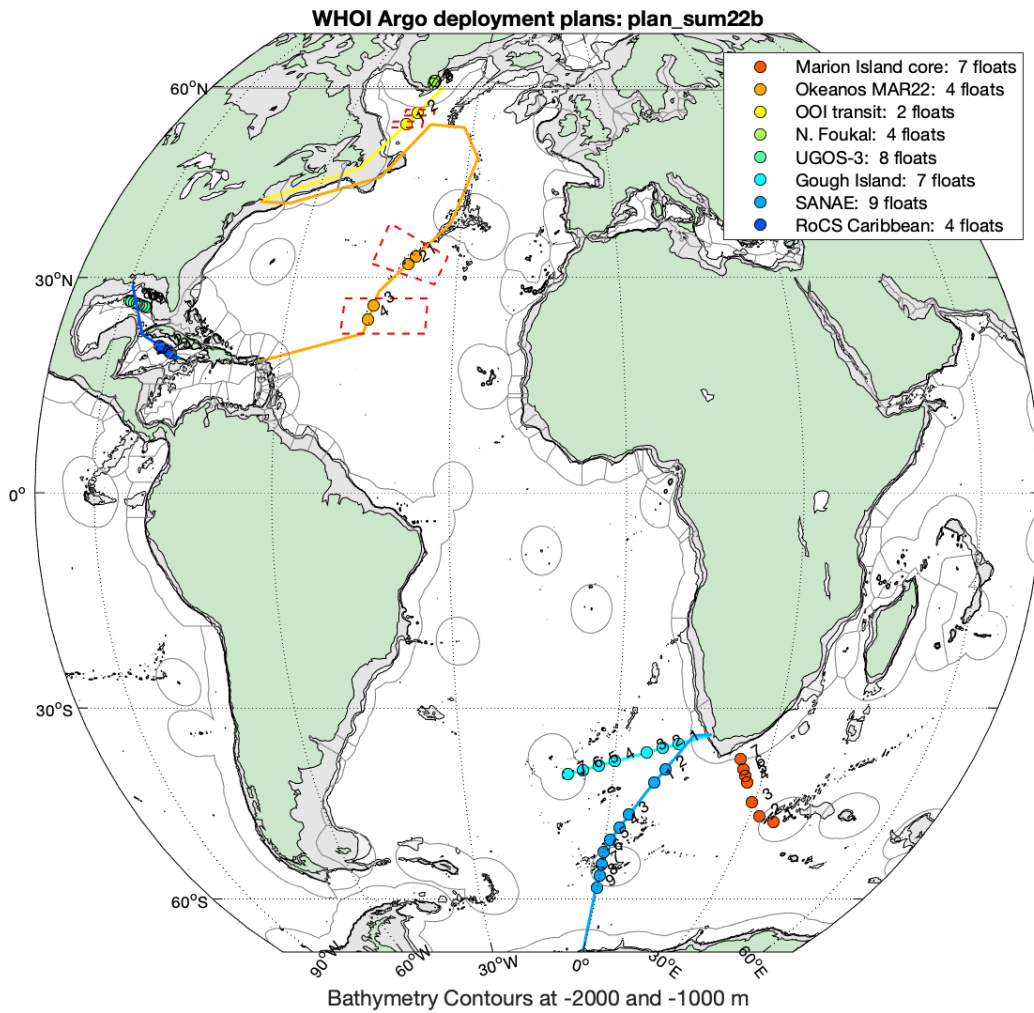
II. South Georgia and the Falklands, 19 days



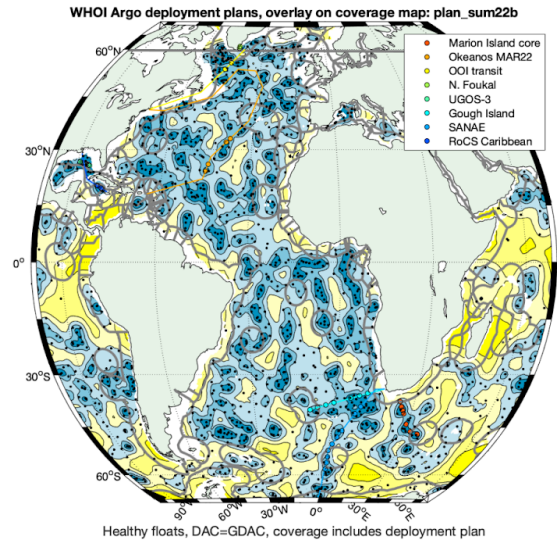
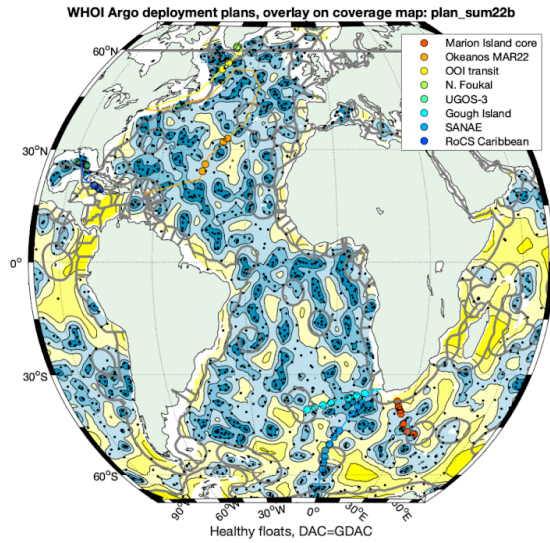
III. Antarctica, South Georgia, and the Falklands, 24 days



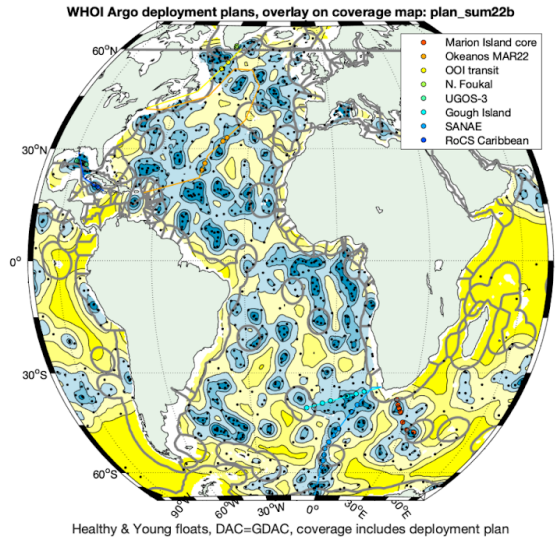
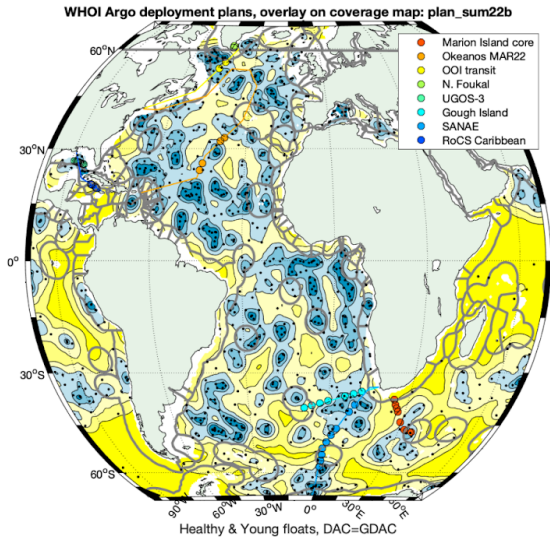
Summary: Map of Deployment Plans



Before/After Coverage (Healthy Floats)



Before/After Coverage (Healthy & Young Floats)



Additional maps at <http://argo.who.edu/argo/maps/sparse/>

List of nominal locations of planned WHOI deployments

1	1	Marion Island core	-47.100	35.607
1	2	Marion Island core	-46.300	32.220
1	3	Marion Island core	-44.000	29.442
1	4	Marion Island core	-41.000	27.181
1	5	Marion Island core	-40.000	26.427
1	6	Marion Island core	-39.000	25.673
1	7	Marion Island core	-37.500	24.542
2	1	Okeanos MAR22	33.000	-38.000
2	2	Okeanos MAR22	32.000	-39.200
2	3	Okeanos MAR22	26.000	-44.667
2	4	Okeanos MAR22	24.000	-45.333
3	1	OOI transit	53.500	-45.814
3	2	OOI transit	55.500	-43.871
4	1	N. Foukal	60.500	-42.550
4	2	N. Foukal	60.500	-42.500
4	3	N. Foukal	61.000	-42.500
4	4	N. Foukal	61.000	-42.300
5	1	UGOS-3	25.700	-85.500
5	2	UGOS-3	25.829	-86.000
5	3	UGOS-3	25.957	-86.500
5	4	UGOS-3	26.086	-87.000
5	5	UGOS-3	26.214	-87.500
5	6	UGOS-3	26.343	-88.000
5	7	UGOS-3	26.471	-88.500
5	8	UGOS-3	26.600	-89.000
6	1	Gough Island	-35.207	12.000
6	2	Gough Island	-35.861	9.000
6	3	Gough Island	-36.514	6.000
6	4	Gough Island	-37.821	0.000
6	5	Gough Island	-38.475	-3.000
6	6	Gough Island	-39.129	-6.000
6	7	Gough Island	-39.782	-9.000
7	1	SANAE	-41.000	8.493
7	2	SANAE	-39.000	10.249
7	3	SANAE	-46.000	4.354
7	4	SANAE	-48.000	2.750
7	5	SANAE	-50.000	1.147
7	6	SANAE	-52.000	0.000
7	7	SANAE	-54.000	0.000
7	8	SANAE	-56.000	0.000
7	9	SANAE	-58.000	0.000
8	1	RoCS Caribbean	20.298	-81.500
8	2	RoCS Caribbean	20.074	-81.000
8	3	RoCS Caribbean	19.445	-79.600
8	4	RoCS Caribbean	19.266	-79.200